



Ashhurst Village Voice

*Informing the communities of
Ashhurst & Pohangina*

ISSN 2324-5468 (Print)
ISSN 2324-5476 (Online)

October 2023

https://recap.org.nz/village_voice
Established 1997

Community Comment

The growing stockpile of road metal stored at the Gravel Pit is a sign that street maintenance is underway. Some residents have already been notified that pre-seal repairs may restrict access and limit on-street parking in advance of the actual reseal of the street.

A serious upgrade of Custom Street is well advanced with much of the underground work completed. Consolidation of the road's foundation is in progress, as is preparation for a footpath and stormwater control.

Informed sources suggest that the swale drains in Wyndham Street are to be given a drastic overhaul. Future residential development needs are driving an upgrade of the stormwater and water infrastructure in the area between Oxford Street and Cambridge Avenue. Affected residents will receive a newsletter advising of the proposed works and their timeframe, with more updates on Facebook channels. Work is expected to begin over the next month with traffic management plans required to maintain safety of workers, residents and motorists on this detour route between the Saddle Road and Colyton Road. Please be patient and understanding while this work is

underway.

The City Council will soon be releasing consultation documents on the replacement and relocation of the public dump station for mobile home waste systems. The current dump station, located next to the camping ground ablution block is no longer sufficient to meet demand, and has access problems for larger vehicles. A new proposed site to the right of the Ashhurst Domain sport ground entrance off Cambridge Avenue meets various design requirements. The site must be easily accessible and close to suitable sized sewerage pipes, while being suitably isolated from residential properties. More information will be available from the Palmerston North City Council web pages under 'Participate Palmy'.

National election day is Saturday, 14th October. Early voting options will be provided in the preceding week at River Church, Cambridge Avenue. Election day venues in our catchment areas include Village Valley Centre, River Church, Awahou School and Pohangina Hall. Do get out and vote and make your mark to select New Zealand's future government.

Harvey Jones

Contents

Totara Reserve Open Day	2
Ashhurst Volunteer Fire Brigade	2
Ashhurst Book Club	2
Craft on Cambridge	2
Ashhurst Drama Club	2
Ashhurst Senior Citizen Association	3
RECAP Update	3
Ladybugs Part Three	4
Book Review: The Axeman's Carnival	5
Te Ahu A Turanga Update	6
Ashhurst School	6
Ashhurst Library	8
Ashhurst Athletics Club	9
Ashhurst Bowling Club	9
Ashhurst Rainfall	10
Palmerston North City Council	11
Ashhurst Indoor Bowls	12
Ashhurst Clay Target Club	12
Village Voice Contacts	12



Image: Design view of proposed dump station—Palmerston North City Council

**Deadline for November
Issue—Friday, 20th
October**

Totara Reserve Open Day

The inaugural Tōtara Reserve Open Day is on Saturday, 28th October 2023 between 10.30 am—1.30 pm.

*Tuia te taiao, Tuia te tangata—
Connecting the taiao to people,
the people to the taiao.*

Come along and celebrate the reopening of the campground at our beautiful Tōtara Reserve Regional Park after the effects of Cyclone Gabrielle earlier this year.

This is a fun interactive day for the whole whānau, with a sausage sizzle lunch and free return bus travel from Palmerston North, Ashhurst and Feilding.

It is also an opportunity to engage with our staff to find out more about what Horizons does in the reserve, with interactive stalls focused on biodiversity, biosecurity, water quality and more for you to explore.

Some of the fun activities available on the day include:

- Pest plant display with interactive game
- Pest animal display with rat trap building
- Bat display
- Birds of Tōtara Reserve display and bird count activity
- Weta motel building station
- Iwi will have a Rongoā display
- Check/clean/dry messaging and Freshwater display
- Information on the Reserve—walking tracks, campground facilities etc.
- Scavenger hunt run by Awahou School
- Pohangina Catchment Care Group stall

The event is listed on the Eventfinda website where we are taking free registrations of interest. For more information, contact Horizons Regional Council

Ashhurst Volunteer Fire Brigade

Kia ora Ashhurst. A few weeks ago, Fire and Emergency did a live house burn down in Levin which was broadcast on Seven Sharp. One thing this burn reinforced for me was the devastating speed with which fire spreads.

Two to three minutes is all it can take to make a house fire unsurvivable. Modern homes and furnishings are made from products that are more flammable and give off more poisonous smoke. This gives you and your family precious little time to escape.

The solution? An escape plan.

In a fire, you need to get out and stay out. A planned and practiced escape plan means that, when the smoke alarm goes off, you are much more likely to make it out alive, especially if you have young children or other dependents that

need help to get out too.

Need a hand with coming up with an escape plan? Help is at hand! Visit <https://www.escapemyhouse.co.nz/> which will guide you through making your own escape plan with smoke alarm placement, escape routes and safe meeting points. Still stuck? Visit <https://www.fireandemergency.nz/hfsv/> or ring 0800 693 473 and I'll come help you.

In a fire, you'll be scared and disorientated. Toxic smoke will make it hard to breathe and see clearly. That is why it's essential to have an escape plan, practice it regularly and know how to get to safety quickly.

Cheers,

Matt Clark—Community Liaison Officer, Ashhurst Volunteer Fire Brigade

Ashhurst Book Club

A new book club will be starting up in Ashhurst next month. Booklovers are very welcome. There will be a monthly meeting held in the Library building.

For further details, phone Robyn at 027 404 6597.

Robyn Dare

Craft on Cambridge

Craft on Cambridge is now meeting in the Chapman Hall at the Anglican Church on Monday afternoons from 1.00 pm and Wednesday mornings from 9.30 am. We are grateful for the support of River Church, where we have met since forming in 2020, and expanding numbers led to the move to the new venue.

If you would like to find out what we're about, please come along at whichever time suits you. We are a friendly, relaxed group of people who enjoy taking time out to practise our craft in an informal setting.

To find out more, contact Marianne on 027 627 2054.

Ashhurst Drama Club

The Ashhurst Drama Group get such a buzz from giving our audiences a great night out of community theatre. The Ashhurst Drama Group have been performing for over 50 years, entertaining our community with our warm café style local amateur productions. This year, due to demand and the enthusiasm of the team, we are doing a second production for the year!

Kindly Keep It Covered, by Dave Freeman, is an hilarious comedy set at a health farm.

Roland Dickerby runs a health farm with his wife Julia, bought with the

proceeds of a hefty insurance payout on the demise of Julia's first husband, Sidney. Life isn't easy for Roland and today fate has something extra special in store for him.

Tickets are selling fast for our six performances—bring a group and book a table for a great night out with giggles.

Performances on Friday, 27th and 28th October, Friday, 3rd and Saturday, 4th November, Friday, 10th and Saturday, 11th November. Book tickets at www.eventbrite.co.nz or 027 654 9801.

The Ashhurst Drama Group

VILLA
JOINERY
Quality Kitchens
Designed & Manufactured
135 Mulgrave Street, Ashhurst, Palmerston North
P: 06 326 8849 F: 06 326 9745
E: sales@villajoinery.co.nz



Practical, friendly and affordable animal care

Phone: 06 326 9257

Mobile: 027 572 9353

Clinic Hours

Monday 8.30am - 5.00pm

Tuesday 8.30am - 5.00pm

Thursday 8.30am - 5.00pm

Saturday 9.00am - 12 noon

Wednesday & Friday evenings by appointment

141 Cambridge Avenue

Ashhurst Senior Citizens Association

"Age cannot wither her, nor custom stale her infinite variety" is a quote from Shakespeare's play 'Antony and Cleopatra'. Mark Antony's friend Enobarbus suggests in these words that as Cleopatra aged she would always remain beautiful. Thankfully, as we get older we always remain beautiful, too, don't we? Not maybe physically but our personalities stay with us. Many have taken their lovely natures to their final homes in retirement villages. Most villages have wonderful social environments and many become friends for the rest of their lives. We enjoyed a

very delightful talk from Chrissy Thompson of Ryman Health, giving us information pertaining to retiring in a retirement village. Maybe those of us still in our own homes and being 'Gold Card' holders may end up in a retirement village some day, too.

October's meeting is on the 5th at 2.00 pm in the Methodist Hall, Bamfield Street. Come along and enjoy another informing and entertaining afternoon with afternoon tea, too. You are more than welcome!

Terry Carr—Secretary

RECAP Update

Christmas Hampers

RECAP are working with representatives from the Ashhurst Memorial R.S.A. and the Ashhurst Food Bank again this year to provide hampers of Christmas food for some of our community.

We have a box in the window of the Ashhurst Community Library (look for the tinsel!) for donations of various shelf-stable items for these hampers.

Items we would like are: Christmas puddings, Christmas mince tarts, chocolate biscuits, fizzy drink, juice, passionfruit syrup, tinned fruit and chocolates. Contributions can be placed in the box during library opening hours.

If you have any questions about the Christmas Hampers, you can contact Marianne on 027 627 2054 or chris@recap.org.nz

Emergency Preparedness

Some info from the Emergency Preparedness Seminar we held on 6th September. We have left some resources at the library including a new guide for lifestyle block owners in our area. The library has a reference copy and also info on how to download it. Our local fire department does home visits where they assess fire risk and advise on what you can do to minimise these risks. You can contact them directly to enquire about this free service. RECAP will be following up with the Palmerston North City Council to create a list of community

groups and volunteers and to gather resources to aid in our community response to any future emergency situation. If you'd like to be involved please contact us. For those in Pohangina, please contact: pohanginaemergencyresponse@gmail.com.

Ruahine Whio Protection Trust Fundraising Calendars for 2024

These are \$20 and have beautiful photography from a number of local photographers. To purchase a calendar and support the trust with the vital work they do, please contact: A.vanbrunt@xtra.co.nz

A message from chairperson Janet Wilson: "The Ruahine Whio Protection Trust raises funds to support the volunteer-led trapping work helping to protect the endangered Whio (Blue Duck) population in the Ruahine Range, particularly on the western side. Your support is now even more appreciated as we no longer have Department of Conservation funding via their Community Conservation Fund. Volunteers work hard locally in the Oroua and Pohangina Rivers which hold the southernmost Whio population in the North Island".

Ngā mihi nui to Noel Birchall for building and donating the beautiful Tui feeder in the community garden next to

Continued on next page

Proofreader Wanted

The Village Voice is looking for a proofreader from February 2024. The role is voluntary. If you have attention to detail, recognise the need for an Oxford comma, this role might be for you. Ring 022 051 6315 for more info.

JustOne Please

Super Kia ora Ashhurst people and beyond. Thank you very much for the donations for September.

The item for the Safe House for October 2023 is Milo.

You can drop these off at the Ashhurst Library. Contact Louise Bowe on 020 410 86128 for more information.

Craft on Cambridge

At the Chapman Hall, Anglican Church, Cambridge Avenue, on Monday afternoons 1.00—3.00 pm and Wednesday mornings 9.30—11.30 am. B.Y.O. craft and the cost is \$2 each time.

A friendly, relaxed group who can help with your UFOs!

Contact: Marianne Crawford 027 627 2054

WE NEED YOUR HELP!



Calling all residents...

We're on a mission to make our area one of the safest, best prepared and friendliest in New Zealand! Whether you're a new or long-time resident, Palmerston North Neighbourhood Support is here to help you:

- Get to know your neighbours
- Receive emails + alerts that will keep you up-to-date
- Gain tips and resources, including from NZ Police
- Be able to give back or receive support
- And much much more, all for FREE!

To learn more or get involved, visit us online or contact:

Palmerston North Neighbourhood Support
 Alison Jarden JP, Manager
 06 355 4468 | 021 0248 4139
info@pncitysupport.com
www.pncitysupport.com




Creating safe, resilient and connected communities.

THE herb farm | CAFE

Dine with us!

TRY OUR DELICIOUS NEW MENU:
 Which includes a Creamy Smoked Chicken and Truffle Pasta, our new Veg Breakfast Bowl, mouthwatering Keto Chaffle and more...



CAFE - GARDENS - SHOP - WORKSHOPS & EVENTS - FUNCTIONS

herbfarm.co.nz • 86 GROVE ROAD, ASHHURST • PH 06-326 7479

the Bottle-O

The Bottle-O Ashhurst

Real Locals, Real Value

Open 7 Days

62 Cambridge Avenue, Ashhurst
 06 777 5119
tboashhurst@gmail.com

Like us on Facebook 

Awahou Pohangina Playgroup

'A lovely country playgroup' est. 1967.
Meet every Wednesday during term
time 9.30 am—12.00 pm.

Location: Awahou School Hall, 518
Pohangina East Valley Road.

Drop in for a visit, enjoy a cuppa,
morning tea and chat. Contact: Arna
Taylor—samnarna@outlook.com

Ashhurst Memorial R.S.A. Inc

74 Cambridge Avenue, Ashhurst.
Phone: 326 8296

Sunday: 2.00 pm—6.00 pm

Monday 3.00 pm—6.00 pm

Tuesday: 3.00 pm—7.00 pm

Wednesday 3.00 pm—9.00 pm

Thursday: 2.00 pm—9.00 pm

Friday: 2.00 pm—Midnight

Saturday: 1.00 pm—9.00 pm

Manawatu Rangitikei Methodist Parish—Ashhurst, Bunnythorpe and Pohangina Congregation

Ashhurst Devonport Worship and
Community Centre

10.30 am 2nd Sunday

Pohangina Community Church

10.30 am 3rd Sunday

Contacts: Parish Office—323 4127
Heather Fairless—326 8355

Ashhurst Bowling Club

67 Stanford Street.

Season starts end of September
through to mid April.

If you would like more information on
lawn bowling, please call or email:
Adrienne Harding 326 8972/027 283
6317 ashhurstbowlingclub@gmail.com

Pohangina Rubbish Collection

Rubbish is collected every Monday.
Bags out by 7.30am.

RECAP Update

the library. It's been super popular with
our feathered friends. And another ngā
mihi nui to Ross and Jill at the library for
keeping the feeder full!

The last RECAP Crop Swap for the
year is Saturday, 28th October from
11.00 am—1.00 pm at the Ashhurst
library. This is a free sharing event,
where you don't need to give in order to
take or vice versa. It's a great spot to
bring the fruit from the trees you can't

keep up with or to offload some of your
glut or excess seedlings. Or just show up
to collect the bounty from other
gardens. There is often a lot of great
kōrero on various gardening topics, so
bring your questions, too.

To be on our newsletter database,
please email info@recap.org.nz with
your email address.

Noho ora mai

Ladybugs Part Three

In the previous two articles I
described many of the larger
and medium-sized ladybirds
found in New Zealand, and
now, in this article, I will
describe some of the small
ones. All of these small
ladybirds can be found in and
around Ashhurst. One of
these is the Minute Two-
spotted Ladybird, a native of
eastern and southern
Australia. About 2.5 mm long,
this ladybird is black with two
large reddish-brown patches
on its back. It feeds on aphids,
mites and scale insects.

Another small ladybird is
Photos Top to Bottom:

Minute Two-spotted Ladybird—
Diomus notescens;

Loew's Ladybird—*Scymnus loewii;*

Citrus Whitefly Ladybird—
Serangium maculigerum;

Mite-eating Ladybird—*Stethorus*
species



Loew's Ladybird, one of the
so-called Dusky Ladybirds.
This species comes from
North and Central America
and was first recorded in
Auckland in 1941. At little more
than 2 mm in length, the
adults are mostly black with
brown around the head and
rear end. This species feeds
on mealybugs, aphids and
other small insects. A couple
of other closely related
species of Dusky Ladybird
are common in the Auckland
area.

Slightly smaller again at
1.5—2.0 mm is the Citrus
Whitefly Ladybird. This is
another Australian species,
first found in Auckland in
2005. It is shiny black with
two large, dull orange spots
on its back. As the name

Continued on next page

**Talk to the specialist!**

Ashhurst's only real estate office,
Next to the lotto 4 square, Cambridge Avenue

Emma Tankersley Residential Sales Consultant
M 027 566 3778 E emma.t@pb.co.nz f PBAshhurst

Property Brokers Ltd Licensed REAA 2008

Property Brokers^B

pb.co.nz

your local ashurst electrician

Knowles Electrical

Electrical •
Home Ventilation •
Security •
Heat Pumps •

Michael Knowles
registered electrician

M 022 024 8156

E michael@knowleselectrical.co.nz

W www.knowleselectrical.co.nz

no travel or service charges within the village mon-fri

For all your automotive needs

**VILLAGE VALLEY
AUTOMOTIVE Ltd**



- WOF
- TYRES
- REPAIRS
- BATTERIES
- SERVICING
- TRAILER HIRE
- SPIT ROAST HIRE
- AIR CON SERVICING
- WHEEL ALIGNMENTS

Ph 06 326 8239
www.vva.co.nz

@ office@vva.co.nz

📍 54 Cambridge Ave, Ashhurst

Ladybugs Part Three

implies, it feeds on citrus whitefly, but also on other insects such as psyllids and mites. I have found it many times on a range of plant species, including citrus.

Last, but not least, are the smallest ladybirds I know of, the Mite-eating Ladybirds in the genus Stethorus. These ladybirds are only about 1 mm in length and black in colour. I have found them on

trees infested with spider mites, including a lemon tree and a Mahoe tree. There is probably more than one species of these ladybirds, depending on what species of mite they are preying upon. The adults and their larvae feed on the mites and also their eggs.

Grey Smith

Book Review: *The Axeman's Carnival*

The Axeman's Carnival by Catherine Chidgey.

Magpies are a common sight around here, but this particular magpie has written his own special story for us.

His name is Tama and he was rescued by Marney, wife of High Country farmer, Rob. Tama was found as a young, featherless chick and brought home by Marney to love and care for until he is big and strong enough to fend for himself. Rob is less enthused and cannot understand his wife's obsession with young bird. Empathy is not Rob's strongpoint.

As Tama grows, he learns to talk incessantly and to imitate the voices he hears on a daily basis. Marney starts to upload cute pictures of him on social media and Tama becomes a world-wide internet sensation. He talks and talks, she dresses him in fancy costumes, hats and accessories—people adore him!

Tama is also aware of where he came from, up in the nearby pines on the farm, and knows he can never return to his former home. He would be rejected by

his family for living and consorting with untrustworthy humans.

The magpie's voice imitations are hilarious—swear words are a favourite and people hear their innermost secrets repeated back to them and others. But Tama is also aware of blackness and cruelty in his small family - there is a secret and he has no intention of keeping it to himself. All is certainly not well on the farm and with the annual Carnival approaching, Rob is becoming very serious about his wood-chopping championship. He desperately wants to win again and so, for their own reasons, do Tama and Marney.

This story is so original—almost Aesop-fable in its style. It shows the author's deep understanding of both animal and human behaviour. We can certainly wonder at how bizarre we must appear to any bird or animal living alongside of us.

A wonderful story told by a wise and gifted author (and an equally wise human).

Robyn Dare

Steady As You Go

Steady As You Go—A falls prevention programme. One hour of slow purposeful exercises for Seniors. Aimed at strengthening weakened leg muscles and helping to improve balance. \$2 per session. Otangaki Lodge, 69 Oxford Street, Ashhurst

Contact Age Concern phone 355 2832 for more details.

A.P.V. PLUMBING LTD

Kenny Allison

Registered Craftsman

Plumber/Gasfitter

- ✓ Free Quotes & Consultation
- ✓ Solar Installations
- ✓ Roofing
- ✓ Central Heating Installations
- ✓ All Work Guaranteed
- ✓ Competitive Rates

22 Mulgrave Street
Ashhurst

M: 027 241 3457

A/H: 326 9346

E: apvplumbing@xtra.co.nz

!!! NO JOB TOO BIG OR
TOO SMALL !!!



**PUT YOUR
PROPERTY
IN THE
SPOTLIGHT**



List your home with me for 90 days, and receive a free realestate.co.nz Silver Marketing Package and on settlement day, a \$800 Prezzy® Card.*

My quality service is backed by over 28 years of national experience — giving you everything you need to make informed property decisions.

It costs no more to list with experience — call me on 0800 GET SOLD today!

Susan Woolnough AREINZ Sales Consultant
M 021 481 855 | @getsoldwithsusan
E susan.woolnough@harcourts.co.nz



Harcourts Team Manawatu

*Special conditions apply | Team Manawatu Realty Ltd Licensed REAA 2008



Nigel Scrimshaw 027 486 8464

topnotchchimney@xtra.co.nz

Quality Chimney Sweeping
Repairs and Maintenance Available
Rental Property Assessment

Don't deny your biggest investment the specialist sweep it deserves

topnotchheatpumpcleaning@xtra.co.nz

A filter and coil clean equals
quicker startup,
better working times to maintain desired
temperature
A healthier home

www.topnotchchimneysweeps.co.nz



THE LASH STUDIO **NEW HOURS** Victoria
027 270 4818
thelashstudio@xtra.co.nz
Monday - Thursday 10am - 8pm
Saturday 9am - 2pm

For All Things Lashes
and Brows

Lash Extensions
- Classic Extensions
- Hybrid Extensions
- Volume Extensions
Lash Lift
Lash Tint

Brow Lamination
Hybrid Brow
Brow Tint
Brow Shape



@thelashstudio.ashhurst

*Bookings can be done via my Facebook Page

Ashhurst Plunket

Every Monday and Tuesday.

Providing family health and wellbeing; child growth and development checks.

For more information call Plunket Area Office—0800 692 445 or 06 357 4844

B4 School Check

The B4 School Check is the final Well Child check.

Free for all four year old children. It includes a distance vision screening test, audiometry hearing test, height, weight, dental health and child development.

Contact 0800 692 445

Strength and Balance Ashhurst

Move it—or Lose it! Join our friendly group for a gentle, low impact exercise class, (no floor exercises) with an emphasis on fun. Optional—go for coffee afterwards.

Village Valley Centre, Monday mornings, 9.45 am—10.45 am.

Cost: \$8 per class.

Enquiries: Maria—phone 329 4166

Ashhurst Budgeting Service

Thursday 9.30 am—1.00 pm.

Operating from St Mary Magdalene Anglican Church, 67 Cambridge Street, Ashhurst.

For Appointments contact: Manawatu Home Budgeting Service. Phone: 358 2279; Cell: 0800-228 343.

River Church

We meet at 131 Cambridge Avenue each Sunday at 10.00 am. All welcome.

Pastors Dave and Kellie Ross. Phone 027 247 2179 or 328 4864 (evening)

www.riverchurch.nz

Ashhurst Foodbank

Open 2.30 pm—3.30 pm every Thursday. Methodist Church, Bamfield Street, Ashhurst.

Contact: Marianne 027 627 2054

Ashhurst Red Cross

Secondhand Shop, Cambridge Avenue.

Lots of clothing and shoes, books, toys kitchen and household goods in store.

Donations accepted when shop is open.

Monday—Thursday 12.30 am—2.30 pm
Friday 10.00am—1.00pm or when the flags are out.

Te Ahu a Turanga Highway Update

Significant milestones have been achieved on Te Ahu a Turanga: Manawatū Tararua Highway, as the project's third construction season draws to a close at the end of September.

On the earthworks front, the project moved its six millionth cubic metre of earth in September, which means the bulk earthworks target has been reached. For some context, six million cubic metres of earth would fill Auckland's Eden Park five times.

The remaining 300,000 m3 of earth is planned to be finished by the end of the year.

Achieving this mammoth total is due to the incredibly hard work of all the contributing Alliance partners, subcontractors and suppliers.

Another big milestone has been reached on Parahaki Bridge—the 300-metre-long structure crossing the Manawatū River—with the much-anticipated installation of the form traveller.

Visitors to Te Āpiti—Manawatū Gorge can see this blue and orange frame assembled on Pier 1, from which the first sections of the superstructure (the part of the bridge the road goes on) will be built.

Over the river at Eco-Viaduct Bridge, the 12th and final column is in the ground,

and 30 steel beams are now in place on the piers.

The remaining 12 beams will be installed by November 2023 to complete the seven spans on this bridge. Pre-cast concrete panels for the bridge deck are being installed from the northern end of the bridge.

Another exciting aspect of construction of the highway is the project's impressive landscaping programme, which has seen more than one million plants put in the ground since the start of construction.

The millionth plant, a manoao (silver pine), was planted by the project's longest-serving landscaper, Louie Trasporto in September. Louie was selected because he is one of the longest serving members of the team, and is estimated to have planted more than 250,000 plants.

The landscaping programme is now more than halfway complete, with a total of 1.8 million plants to be put in the ground by the end of 2024.

For more information about the project, head to www.nzta.govt.nz/projects/te-ahu-a-turanga/ or visit the Ashhurst Library or the Visitor's Centre at our Project Office for the latest flyover, project updates and the Drive the Highway simulator.

Grant Kauri—Waka Kotahi New

Ashhurst School

Congratulations to our Year 5/6 basketball team who took out first place in their division recently. Thank you to Pā Heath for coaching and Nikki for managing, and Albie for your help running the team in the finals.

A massive congratulations also to Whāea Bev. Another silver at the New Zealand Archery Indoor Championship.

A big congratulations to our Year 5, 6, 7, and 8 teams who competed at the annual Manawatu Mathex competition recently. This competition brings together primary and Intermediate schools from across the Manawatu who complete a series of quick-fire questions and practical challenges in teams of four.

Our Year 5 team finished in the Gold section and our Year 6 team finished in the Silver section of their challenge events. The Year 7 team finished 13th and the Year 8 team, 14th equal in the competitive sections.

What a fantastic week we had at the end of August in Rotorua. The children enjoyed the best weather along with a huge variety of different activities. A massive thanks to all of the parents who gave up time away from work and family to help supervise. Also, to Whaea Katelyn, Whaea Jess, and Pā Reece as well as Pip for coming on the camp, and all the preparation.

Continued on next page

Riverside Orchards

**For Your Fresh Fruit and Vegetables,
Fresh Baked Bread,
Cheese, Milk, Family Pies**

Daily delivery into Ashhurst and Palmerston North
Order online now at www.riversideshop.co.nz

1346 Napier Road (opp Petrol Station) Ashhurst
P: 06 326 8800 F: 06 326 8750. E: sales@riversideshop.co.nz

O'LEARY TREE SERVICES LTD

Craig O'Leary

Dip. Hort/Arb. Certs, Trade Cert. Hort.
30 Years Experience

**Tree Removal & Trimming
Pruning, Hedge Trimming**

P. 06 326 9688 M. 027 672 7747

Ashhurst School

While camp was happening, we also had our activities week for students in Years 5—8. A massive thanks to Whaea Ashleigh, Pā Kyle and Pā Andre for supervising the week. We had a number of volunteers help out during the week, as well as the Ashhurst Squash Club, Craig who helped with the darts and Matt from table-tennis who also made our week a success. Thank you to all and my apologies if I forgot anyone!

I have been very privileged to be appointed as the Kahui Ako co-lead principal for the Palmerston North East Cluster. This will not take me away from school very much but will mean that I am assisting in the development of school professional development and delivery plans across nine other schools. The schools in our Kahui Ako or COL are Freyberg High School, Hokowhitu, Russell St, Milson, Roslyn, Terrace End, Whakarongo, Ross Intermediate and Parkland. I feel very privileged to assist in leading.

We had a huge success on Daffodil Day raising about \$800. A massive thanks to our prefects, heads, Albie, Mrs Pearce, and the Lawrences who donated the daffodils.

A big congratulations to all the children involved in Dance NZ Made. They spent a day attending different workshops and working with other dance teachers and meeting and working with children from other schools. On the Friday night they performed the dance routines they had been practicing in preparation for this

competition. The group finished first runners-up on the night. This was a fantastic result for the children and their teachers. We would like to thank Miss Weel, Miss Lampp, and Mrs Pearce for all of the amazing work they put into getting the children prepared for this event. Thank you to all the parents and caregivers who supported this group on the night and were kind enough to provide transport.

We had a very busy week at AIMS games. Our students performed extremely well across the week.

There were over 12,000 students competing from almost 350 Intermediates across the country. Netball had over 145 teams and Ripper had 48 teams competing. Our netball team performed really well throughout the tournament against some very big schools. Our Ripper team had a successful tournament and finished 13th overall. Considering schools like PNINS were placed 10th and Monrad 15th this was a great effort. A big thanks has to go to our team managers and coaches who took the teams. Thanks to Pā Reece and Miss Herbert for all the coaching they have done throughout the year and to Whaea Kaz who was the manager of the netball team.

At the end of the year, Miss Herbert will be leaving our school to take on a position at Dannevirke South School. Katelyn has been making the drive over

Continued on next page

261 Fearless Club NZ—Ashhurst
Women's only running group. Non-competitive, non-judgemental, no woman is left behind!

Every Monday during term time, 6.00 pm—7.00 pm

Meet at the Ashhurst Squash Club

Email: 261clubnzashhurst@gmail.com or phone Sarah on 027 460 6729

Ashhurst Yoga Classes

Gentle beginner to intermediate yoga classes are on every Wednesday during school term time, 9.15 am—10.00 am at the Village Valley Centre.

Cost is \$8.50 and bring your yoga mat.

Working to your own level we focus on mindfulness, building and maintaining strength and flexibility—you don't need to have either to start yoga!

Introducing a new class on the first Wednesday of every month—Chair Yoga, suitable for all levels, especially those with limited lower body mobility or balance, a perfect opportunity to start yoga!

Phone or Text Vanessa: 027 243 0187 or email vibphotography@inspire.net.nz, or visit www.vibphotography.co.nz.

Matwork Pilates Sessions

Tuesdays at 6.00pm—55 minutes. Centennial Room at the Village Valley Centre.

Free first session. Bring a mat or \$12 mats available.

"In 10 sessions you will feel the difference, in 20 you will see the difference, and in 30 you will have a new body." Joseph Pilates

To register contact Narrelle 021 2673676



Ashhurst's LANDSCAPE SUPPLY YARD

- ✓ Compost
- ✓ Bark Nuggets
- ✓ Basecourse
- ✓ Builders Mix
- ✓ Nova Coil
- ✓ Weedmat
- ✓ Concrete/Mortar/Cement Bags 20kg
- ✓ Mulch
- ✓ Top Soil
- ✓ Washed Stone
- ✓ Sand 3 & 4mm
- ✓ Pea Straw
- ✓ Slimline Water Tanks

Contact: Greg
027 557 8809

greg@manawatucontracting.com

145 Mulgrave Street, Ashhurst
just along from the PNCC Recycling Centre

HOME DELIVERIES AND BULK DELIVERIES AVAILABLE

LJ Hooker

Your Ashhurst Property Specialist

*If you are thinking about
selling call me first.*



Peter Colville

021 474 557

peter.colville@ljhookerpn.co.nz

Peter Colville -
LJHooker Palmerston North

Manawatu (1994) Ltd - Licensed REA 2008

Ashhurst Clay Target Club (claybird shooting)

Meets the last Sunday of every month from 9.30 am at 651 Valley Road. Anyone welcome to join us
Queries: Ken Simonsen,
Phone: 329-4800

Ashhurst and District Senior Citizens Association Inc

Meet on the first Thursday of each month in the Methodist Church Hall, Bamfield Street, at 2.00pm. We invite you to come along and enjoy an afternoon of friendship and entertainment.

Contact: Terry Carr, 326 8074

Local Justices of the Peace

Mrs AK Rutherford—Available by appointment—027 404 8551

Mr F Saua
Pohangina Road RD 14—029 254 3206

Mr JC Culling
Pohangina Road—329 4825

J Wakeford
Hiwinui—022 319 0434

Ashhurst School

the Saddle Road for the past three years and with a school only down the road, it is totally understandable that she is wanting to be closer to home. We thank Katelyn for all she has contributed to our school and wish her all the best in 2024.

A huge congratulations to all our teams who participated in the Ricoh sports tournament. Our teams represented the school with amazing attitude and effort. We finished 4th overall with the highlight

of our basketball team narrowly losing the final and gaining second place. Congratulations also to our Year 7/8 basketball team who finished 3rd overall at the Elite sports basketball. We now head into the last event of Athletics tied at the top of the table with Lakeview. A big thanks to all our teachers for coaching these teams.

Heath Chittenden—Principal

Ashhurst Library

Hi everyone, we just want to start with a big thank you to all our garden volunteers and to our garden coordinator Suzanne for their wonderful work. With the warmer weather, they can finally venture back into our gardens after an incredibly wet winter. With the addition of our new and very popular birdfeeder courtesy of Noel Birchall, our outside area is looking amazing.

Summer Reading 2023-24

Our Summer Reading programme which promotes reading enjoyment will be back in the summer months of December and January. This involves talking with kids on the programme about what they have been reading and other reading interests. It is a great programme that is combined with activities and incentives along the way finishing with a big celebration party. Keep an eye on our Facebook page in November for registration details.

Ashhurst Elevenses

Every Friday at 11.00am during term time.

We are thrilled with the response to our new morning tea sessions, thank you to everyone who has attended. Come along every Friday during term time for a cuppa and a friendly chat. Everybody is welcome! There will even be tea, coffee and the odd biscuit provided, but if you want to bring along some home baking, we can easily have our arms twisted. This is a great chance to chat with old friends and make new ones.

Ashhurst Mighty Kids

Ashhurst Mighty Kids is our preschool programme of stories, songs, games and crafts. As ever, we hope to be able to have special guests throughout the term

Wednesday, 11th October, 10.30am

Wednesday, 25th October, 10.30am

Wednesday, 8th November, 10.30am

Manawatu Home Budgeting Service

We are thrilled to be in partnership with Manawatu Home Budgeting Service who are conducting budget sessions in our library on Thursdays or you can make an appointment in their Palmerston North office. If you would like to talk to their wonderful staff or need some excellent budgetary advice and guidance, please let us know.

Karu Kanakana

We are very happy to have Karu Kanakana sessions taken by our great friend, Billie Jean, who will bring storytelling, games, waiata and fun for all the whānau. This is a bilingual session for preschoolers and their kaitiaki (caregivers).

Nau mai, haere mai, whakatau mai rā!

Proudly supported by Pascal Street Community Trust.

Tuesday, 17th October 10.30am

Tuesday, 31st October 10.30am

Ashhurst Library Facebook

Just a reminder that if you want to keep up to date with all our latest news, events or announcements, just visit us at <https://www.facebook.com/AshhurstLibrary> and click "Like".

Ross Meads—Ashhurst Library



**Pohangina Valley
Meats**

*Specializing in Home Kill
with quality aged cuts
and small goods*

Frazer O'Riley

027 213 0140

valleymeats@outlook.co.nz

Cattle Sheep Deer Pig
*Grown by your family,
For your family*



Always Looking After the Locals
Village Four Square and Lotto



All You Need!

- ◆ Groceries
- ◆ Fresh Produce /Meat
- ◆ Magazines,
- ◆ DVDs,
- ◆ Beer/Wine,
- ◆ LPG Gas Swap/New Bottles
- ◆ Lotto

Ashhurst Medicine Depot

Hours

Monday—Friday: 7.00am—8.00pm

Saturday: 7.30am—8.00pm

Sunday: 8.00am—8.00pm

Public Holidays: 8.00am—8.00pm

Pravin & Padmini Patel welcome you at

141 Cambridge Avenue, Ashhurst

Phone: 326 8014



...your local fencing contractors...

Contact us now to talk about your
rural & lifestyle fencing requirements

hello.hansenfencing@gmail.com 027 357 3960

Ashhurst Athletics Club

In March, our club completed another successful summer season, having almost fully recovered from the covid disruption of previous years. In addition to Tuesday club evenings, when a number of club records were broken, our children performed well in regional and national competitions

At the April prize-giving, the achievements of our young athletes were recognized. Emma Long and Emmett Hanley broke sprint records, while Parker Dyason (discus), Emma Bennett (race walk), Lexi Hills-Brown (hurdles, race walk and long jump) and Shaye Ormsby (hurdles and long jump) all broke club records. Sam Dunn and Adalyn Cooksley equalled high jump records, as did Amelia Korte (hurdles) and Oakley Dyason (sprint).

On Prize Day, cup and trophy winners in the three—five year age groups included Emma Long, Isabella and James Moratti, Tyler Davis, James Brown, Oakley Dyason, Emmett Hanley and Katelyn Luttrell.

Cups and trophies for the most outstanding in the six—nine year age groups were awarded to Poppy Alabaster, Jake Thirkell, Adalyn Cooksley and Parker Dyason. Charlotte Brownlie and Oliver Long were the most improved and Peyton Child was awarded a trophy for endeavour. Jack MacFarlane won a committee's choice award.

Cups and trophies in the ten—fourteen year age groups were awarded to Tiana Mildon, Sophie and Katelyn Thirkell, Lexi Hills-Brown, Shaye Ormsby, Quinlan Walker and Emma Bennett.

Twenty-one club members competed in the Manawatu Wanganui Children's

Champs, where our club gained second place. Nineteen competed in the North Island Colgate Games with nine winning gold, silver and bronze medals and pennants. Adalyn Cooksley won four gold pennants and our relay teams also performed well. Seven children competed in the South Island Colgate Games and returned with nine medals and pennants, including three golds.

The club particularly thanks the Ashhurst-Pohangina Lions for installing our new long-jump run-up. Parent helpers were appreciated on club nights and Ari and Finn Bennett are acknowledged for running the warm-up. President Bevin Thirkell, secretary Laura Bennett and other committee members put in many hours to keep the club operating smoothly.

We are looking forward to the first weekly club night of our new season, commencing at Lincoln Park at 5.30 pm on Tuesday, 10th October. Any new children who wish to see what we do are invited to attend, after which they can decide whether or not to join the club and compete during subsequent weeks. Check us out on Facebook: <https://www.facebook.com/ashhurst.athletics>

Mike Shepherd



Photo: Ashhurst at the Manawatu Children's Team Champs (Photo: Bevin Thirkell).

Ashhurst Bowling Club

Every year we notice that the bowling season starts and the weather, which has often been reasonably fine, becomes cold and wet. And so it has happened

again this season!!

Firstly, a huge welcome to all our new members and may you have a wonderful

Continued on next page

Anglican Parish of Pohangina

St Mary Magdalene's Church, Ashhurst
8.00 am First Sunday of the Month
10.00 am every Sunday

St Bartholomew's Church, Komako

10.00 am 2nd, 4th and 5th Sundays.
Priests—Rev Pam Barnett. Contact the Parish office for further information:

Phone 326 8543 or

Email: info@parishofpohangina.net

www.parishofpohangina.net

St Mary Magdalene Church—Office Hours (subject to change at short notice): Monday: closed, Tuesday: closed, Wednesday: 9.30 am—3.30 pm, Thursday: closed, Friday: 1.00 pm—3.00 pm

Ashhurst Pohangina Squash Club

Club night is Monday, from 6.00 pm. Come along and give squash a go! All members and newcomers welcome.

Courts are located at the rear of the Village Valley Centre on Guildford Street

Contact Braydon on 027 390 5611, ashpohsquashclub@inspire.net.nz, or find us on Facebook.

Ashhurst Pohangina Lions

The Ashhurst Pohangina Lions meet every second Thursday of the month at the R.S.A. Clubrooms at 6.30pm. This established and friendly Lions Club is community oriented.

Contacts:

Jack Zwart (President) 326 8958

standishzwart@gmail.com

Brent Besley (Secretary) 329 4891

brent.liz@inspire.net.nz

Mike Forlong (Memberships) 329 4741

forlong@inspire.net.nz

Ashhurst Music Club

Live original music in your back yard

Our club is open to all ages and skill levels. Monthly meetings are about to start so keep watch on the Facebook page and in the Village Voice.

Contact kiwifieldcrew@inspire.net.nz or phone Grant 027 432 7648



Come and see the team at Kauri Physio for all your ACC and non ACC injuries

If you are unsure please email and we will advise whether physio is the right choice for you.

619 Featherstone Street,
Palmerston North
Phone: 06 357 4424
Tamsin.mafi@kaurihealthcare.nz

KAURI
PHYSIO

GRAEME BILSLAND PAINTERS

M: 027 581 2510 P: 06 357 3009 E: bilsland@inspire.net.nz

PO Box 20017, Palmerston North 4448



Kids 'n Motion

Now in its 21st year of providing music and movement for 0—5year olds within Ashhurst and the surrounding community.

Every Friday 9.45 am—11.15 am during school terms at the Village and Valley Centre, Guildford Street, Ashhurst.
Cost: Gold coin donation.

Contact: Cherie O'Leary, Ph: 326 9688
Check out our Facebook page and like us! Kids 'n Motion is such a great group to come along too—see you there!

Pohangina Yoga Classes

Mondays 6.00 pm—7.00 pm
\$10 per class or \$50 for six classes.
Suitable for beginners and those with more experience of yoga.

Contact Catherine: hauorayoga@gmail.com, 021 0270 4400, www.hauorayoga.co.nz, Facebook: Hauora Yoga

Ashhurst Playcentre

Licensed Early Childhood Education Provider. Over 50 years in your community. Spaces now available for children 0—6 years.

Call 326 9270 or email ashhurst@playcentre.org.nz or Drop in for a free visit and a cuppa.

Tuesday and Thursday 9.00 am—1.00 pm. 118 Stanford Street, Ashhurst

Pohangina Local Christian Radio

3ABN Radio is now broadcasting in Pohangina Township on 107.7FM. Offering lifestyle radio with a difference! Broadcast 24 Hours, 7 Days a week for the 'Best News Ever!' www.3abn.org

Contact Rex 06 356 1141 for Free Bible Studies, Books and DVD's.



**HOMESTEAD
CATTERY**

*Skilled and caring local staff
with over 14 years experience*

31 Pohangina Road, Ashhurst
Viewing by appointment welcome

Ph: (06) 326 8064

www.homesteadcats.co.nz

Find us on [fb.com/homesteadcats](https://www.facebook.com/homesteadcats)



544127AA

Ashhurst Bowling Club

time at our club. Welcome back to everyone and looking forward, again, to the great times we always have.

Opening Day was fine and we had a wonderful turn out for the start of another season. We played a couple of games and, as always, great competitiveness from everyone. Then afternoon tea and a social get together at the R.S.A. A day of relaxed fun with everyone having the opportunity to catch up with news and just enjoy each others' company.

The first competition, The Drawn Pairs, was on Saturday the 23rd and what an awful day weather-wise. We started in cold but only drizzly conditions and there were even some fine patches. But huge deterioration of weather and heavy rain forced the day to a close. Scores were totalled and winners were Margie and Tony. Congratulations must go to everyone who soldiered on as long as possible.

Coming up is The Drawn Triples on 7th October followed by the Grinlington/Byrne Cup on the 8th. Skogs and Elizabeth Walker competitions start on the 10th. The Drawn Fours is on the 14th and, for ladies, the Wimsett Cup is on the 16th. The month is a very busy one with the Club Championship Pairs on the 28th and 29th. Fitted in among all this is the

Tararua Quad which is an interclub challenge played at each of the four clubs—always a great catch-up day. So, plenty of bowls to be played.

At our A.G.M. most of the Executive Committee stayed in office but our wonderful Treasurer, Ety, handed the job over to our equally wonderful Margaret. Ety, we thank you for all your hard work and know what a huge job this is. Reports were always clear, correct and concise and nothing was too much trouble for you.

This season we have reintroduced our Mid-Week Non-Championship membership and this is a really great way for those wanting to play bowls at our club but not be involved in championship events to pay a lower fee and get involved. We are a very friendly and welcoming group so if you think this may be for you, please talk with a club member or Adrienne 027 283 6317 or Margaret 027 239 7096. We have sets of bowls you can use and you only need flat-soled shoes. You will be very welcome.

Hoping everyone has got through the Winter ills and chills and looking forward to the sun and less wind. Stay smiling and look after yourself and yours.

Adrienne Harding

Ashhurst Rainfall

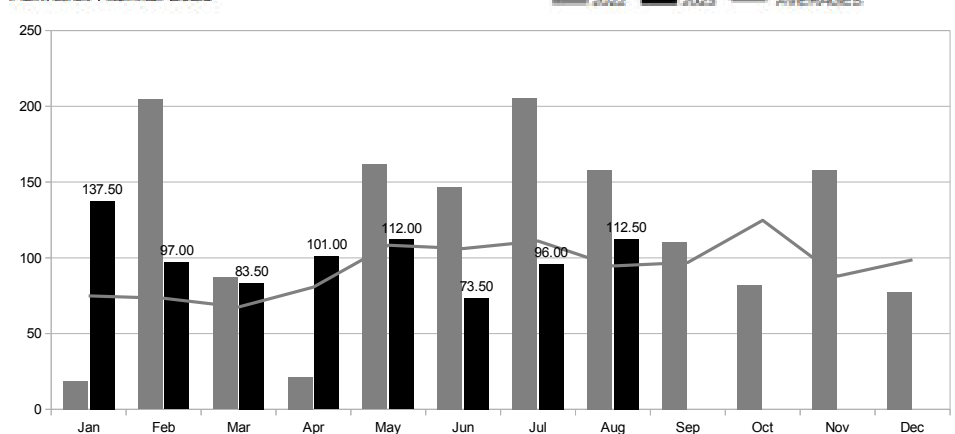
112.5 mm of rain fell in August 2023, above the monthly average of 96.3 mm.

Rain was recorded on 16 days with the highest one-day rainfall of 33 mm on the 9th of August 2023.

The total annual rainfall is 813 mm. This is above the annual average of 719.5 mm.

Mai Quang

Ashhurst Rainfall 2023



Samaritans

We are here

24 hours a day

Whether you are lonely, unhappy,
ready to end it all

WE ARE HERE TO LISTEN TO YOU

358 2442 or 0800 72 66 66 | www.samaritans.org.nz

GLIMPSE

Mayor Grant Smith

Kia ora tātou

Here's hoping you've adjusted to daylight saving, survived the spring school holidays, and have not been too battered about by the equinoctial gales sweeping the country, and indeed Manawatū.

According to long-range forecasts, these wind-bursts are apparently set to be a continuing part of spring, and council crews will do their best to clean up any wind-caused damage to trees, public property, and infrastructure in a timely fashion.

To report any such incidents, council's multi-platform media contact details can be found on this page.

General Election

The focus of this month is of course the Central Government's General Election that will decide the country's direction for the next three years.

Election Day is Saturday October 14, and the Ashhurst Village Valley Centre will be open between 9am and 7pm for polling.

Please take time to consider the issues, the candidates, the policies and options, so you can have an informed say for the local Rangitīkei or Te Tai Hauāuru electorates. Special votes for those outside their home electorates on the day can also be cast.

As our contribution to the General Election campaign, Palmerston North City in collaboration with the Manawatū District Council prepared a short City and Regional Manifesto entitled Our Asks.

This outlines the targeted investments we are seeking from an incoming Government to make in partnership with us.

Copies of Our Asks, which contains an economic profile, and provides a picture of where we are pitching our nationally underappreciated region, are available online through the pncc.govt.nz website.

Christmas is A-comin'

Details of the Ashhurst Christmas Parade and Market on **Saturday December 2** have been finalised.

The market will be on from 9am - noon, with the parade underway from 10am.

Assembling in Winchester St, parade floats will go via Pete's Way to Cambridge Ave, turning left at Bamfield St by the Community Library, along Stortford St and back to Winchester.

These streets will be closed on parade day.

Now, all we need is community input to ensure everyone has a full-on festive time.

We're sharing updates about this community event on the Ashhurst Library Facebook page.

Christmas Hampers

The Ashhurst Community Library is acting as a drop-off point for donations to the annual Christmas hamper campaign for less advantaged families.

With so many cost-of-living increases lately, these hampers could make the difference for some between having a fun Christmas or a not so happy day.

Organisers Recap, the Ashhurst Memorial RSA and Food Bank are hoping for contributions of festive fare such as Christmas puddings, mince tarts, chocolate biscuits, soft drink, juice, passionfruit syrup, tinned fruit and chocolates.

For more details contact **Marianne** on **027 627 2054** or **Chris** on **021 755 314**.

Hazard App

As a follow-up to Recap's Emergency Preparedness Seminar last month, council will be helping create a local community resource and civic emergency guide containing safety information along with a list of relevant community and volunteer groups.

Information will be coordinated through the Ashhurst Community Library where you can get help to download the free Hazard App available on the Red.Cross.org.nz website.

This multi-device app is linked to the National Emergency Management Agency as well as local Civil Defence Emergency Management groups and is preloaded with vital information accessible even if cellular networks or internet connections are disrupted.

Cyclone Gabrielle is proof that we always need to be prepared to face these kinds of random and potentially devastating events.

Meet the Mayor

Trick or treat! This month's Meet the Mayor session will be from **5 - 6pm at the Ashhurst Community Library on Tuesday October 31** - Happy Halloween.

Check the Council website and Facebook page for any changes.

Ngā mihi nui

Mayor Grant Smith JP



ASHHURST COMMUNITY LIBRARY

06 326 8646

Open days

Monday	2pm - 5pm
Tuesday - Friday	10am - 5pm
Saturday	10am - 1pm
Sunday	closed

Access the full range of library digital resources at: citylibrary.pncc.govt.nz

SPLASHHURST COMMUNITY POOL

06 350 0849

Normal hours

Tuesday - Friday	6am - 9.30am + 1pm - 7pm during school term 6am - 7pm during school holidays
Saturday	8am - 6pm
Sunday - Monday	closed

Splashhurst! online:
clmnz.co.nz/splashhurst

ASHHURST RUBBISH + RECYCLING

Rubbish bag collection Tuesday morning. Bags out by 7.30am.

Recycling Bin	Glass Crate
10 October	17 October
24 October	31 October
7 November	14 November

MULGRAVE ST TRANSFER STATION

Recycling, green waste and general rubbish disposal.

Open Days

Tuesday	1pm - 3pm
Saturday	10am - 4pm

Council's 24/7 contacts are **06 356 8199**, the **Council Facebook** page, and the **Snap Send Solve** app to quickly report anything that needs attention or fixing.

PALMY
PAPAIOEA
PALMERSTON
NORTH
CITY

info@pncc.govt.nz / 06 356 8199 / pncc.govt.nz

Published by The Ashhurst Village Voice Society Inc.

Contacts

Editor: Llyvonne Barber

Phone: 022 051 6315

ashhurst.voice@gmail.com

PO Box 38, Ashhurst

Advertising: Grey Smith

Phone: 326 8075; 021 175 1726

rgcasmith@inspire.net.nz

Proof-reader: Kaye Farrugia

Letters to the Editor

Letters under 200 words are preferred.

The writer's contact details are required on all letters (not for publication), including address, email and phone number. We may need to contact you to clarify minor details.

The editor reserves the right to edit, abridge or decline letters or articles without explanation. Pen names or letters submitted elsewhere are not acceptable.

If supplying images, high resolution images are required. Please feel free to contact the editor if you are unable to email images.

Advertising Rates & Information

Articles and community notices are free.

Adverts can vary from a few lines in the side column to a double business card size. Conditions apply. A 15% discount is offered if you pay in advance for a full year (11 issues). A business card size advert is to be 60mm by 100mm at 300dpi and costs \$50.

The cost varies proportionally for smaller and larger sized adverts.

For further information on advertising costs and payments please contact Grey Smith.

For technical details please contact the Editor. Contact details above.

Advertisers, we prefer that you supply files in pdf format. Please note that files supplied in .pdf format are unable to be adjusted from our end. Adverts can be created by the Editor for a small additional cost. These can be adjusted as required.

Village Voice Deadline

Deadline for articles and advertising submissions for the next edition is:

5.00 pm Friday, 20th October.

We cannot guarantee your submission will be included after this date.

Ashhurst Indoor Bowls

The Club has had a huge representation for the Manawatu Centre over the month of September. The Mixed Pairs team of Bruce and Sarah Meyer competed at the Super Finals Weekend in Wellington, attempting to defend the National title that they had won last year. This was not to be this year against the best of the other seven Zone finalists. The defending Champions of the Mixed Fours, Tim Veale, Bruce and Sarah and Anne-Marie Redmond showed their class by sweeping through to take out the title for the second year.

Tim, Bruce, Phil Clinch and Cameron McKay were then selected in the Manawatu team of eight players to compete at the Inter-provincial Championships, with the team coming through in the final round to take out first place. All players played extremely well, with Bruce leading the charge and winning 12 out of 15 games, just ahead of Tim on 11 wins.

Our club is just so fortunate to have these players sharing their knowledge and expertise at our club nights.

On the local scene we have played for our final trophies at club, with Kelvin Hills

and Jeanette Cotton winning the Club Mixed Pairs and Alan and Sue Cowley the Married Pairs. Alan and Sue defeated Kelvin and Jeanette to win the Championship Bar.

We just have our final prize-giving night to go and then it will be a wrap for the season.

We must thank our Club Captain, Alan Cowley, for the great job he has done this year. We are never quite sure what format we will be playing on Club night but it has been a lot of fun.

We are holding our A.G.M. in November and will be looking forward to our new season in March next year.

Margaret Grant—Publicity



Ashhurst Clay Target Club

Our August shoot was a great end to winter with seven squads shooting. It was nice to see so many faces we hadn't seen for ages, like Ira and Gina. Also Barry, one of our club stalwarts who we hadn't seen for some time due to illness.

But apparently Barry was feeling pretty good, turned up at gun club and... won the club handicap with a 'possible'. So did Ira. So the youngest and oldest, both got 25 out of 25.

Our August shoot is the annual Gary Wright Memorial Shoot where everyone uses only shot per bird (single barrel on handicap). Plus there was our Club

Shoot.

We also had time for a Fun Shoot which was a 20 point score and a shoot off with these three:

First: Ira Martinac,

Second: Joby Stella and

Third: Craig Hocken

Club 25 DTL:

Top Gun: Ira Martinac

Handicap: Barry Florence

Gary Wright Memorial Shoot:

Jordon Finlayson

Karen Pawson—Secretary



Photos: Top—National Mixed Fours Champion team—A. Redmond, T. Veale, S. & B. Meyer; Bottom Left—Jordan Finlayson; Bottom Right—Ira Martinac (L) and Barry Florence (R)