



Ashhurst Village Voice

*Informing the communities of
Ashhurst & Pohangina*

ISSN 2324-5468 (Print)
ISSN 2324-5476 (Online)

November 2024

https://recap.org.nz/village_voice
Established 1997

Community Comment

Local Ashhurst activism and a public meeting on the proposed tolling of the new highway provided some welcome media attention on this topic. Arthur Teo and Phil Stevens managed to organise this meeting at short notice with a range of speakers. More than 300 people filled the hall and heard from key representatives of local Councils, Government and New Zealand Transport Agency, with notable absences explained as diary clashes. The consultation documentation was limited and required various Official Information Act requests to extract key information about the assessment processes of a toll road, to compose a considered submission on this proposal. Well done to all who made the effort to attend or lodge a submission.

The City Council is looking for public feedback on two topics of interest to the Ashhurst community. One is entitled "How should Council support food security and resilience in Palmy?" and is asking residents for comments on its draft policy on 'food resilience and security'. The ever-increasing need for food banks to support families in poverty has created a need for Council to consider options of support. Submissions due on 8th November.

The other topic is actually a pre-consultation option to gather ideas from city residents on how parks and reserves should be managed. This could include the rules required to manage community gardens, hosting events in reserves, food truck operation and how restricted

activities such as drones or motorbikes can be controlled in Council reserves. Submissions due 24th November. Both can be accessed from the "Participate Palmy" menu of the Palmerston North City Council web pages.

The return of the road cones have come back to haunt Custom Street again. The intention to close off Custom Street from the rail crossing and Napier Road will require a new turning bay at the end of the street. This area is complicated by the Ashhurst Stream, which heads south at this point and into box drains under the railway and Napier Road. Ten large pipes are awaiting installation to underground the stream, but this work has been postponed until the drier weather patterns arrive. Current work has managed to divert the stream so that the installation of the large pipes can proceed.

Midway on Custom Street, another break in the footpath and kerb is developing. This appears to be the revised location for the campervan dump station. Public opposition to the previous suggestion on the corner of the Domain convinced the Council to alter its plans. This industrial/commercial nature of this little used street is a better location and still close to major highways for motor home access.

To finish on a positive note, it was reported in a real estate publication that Ashhurst was identified as the second-best family friendly suburb in New Zealand. The data was crunched by a Ray White analyst who focused on areas with a high population of children under 14. Family friendly factors include access to parks and schools, community events, healthcare access, low crime and suitable housing. Milldale in Auckland was number one, and Tirau was number three.

Harvey Jones



Photo: Pipes and stream diversion on Custom Street

Contents

Letter From the Editor	2
Reminder Not to Flush Wipes or Paper Towels	2
Ashhurst Food Bank	2
Ashhurst Christmas Parade and Market	2
Cans for Wool	2
Ashhurst Drama Group	3
Ashhurst Volunteer Fire Brigade	4
County Fayre Update	3
Ashhurst Senior Citizen Association	4
RECAP Update	4
Book Review: Murder on Milverton Square	5
Introduced Slugs	6
Ashhurst School	7
Te Ahu A Turanga Update	8
Ashhurst Library	9
Ashhurst Clay Target Club	9
Ashhurst Bowling Club	10
Ashhurst Rainfall	10
Palmerston North City Council	11
Member of Parliament—Suze Redmayne	12
Village Voice Contacts	12

Deadline for November Issue—Wednesday, 20th November 2024

Letter from the Editor

Hello all, welcome to the November issue of the Village Voice. One more issue to go before a new year.

A reminder that any events occurring in December, January or early February should be submitted for the December issue, the deadline for which is Wednesday, 20th November, 2024.

Llyvonne Barber—Editor

Reminder Not to Flush Wipes or Paper Towels

Over the past few weeks, wet wipes and other non-flushable materials have caused significant disruptions, leading to blockages to pump stations and pipes in Highbury and Awapuni.

Council Three Waters group manager Mike Monaghan says only the three P's should ever be flushed down the toilet: pee, poo, and toilet paper.

"Paper towels and tissues are highly absorbent and ninety per cent of wet wipes on the market are also produced from nonwoven fabrics made of polyester or polypropylene. These products don't break down well in pipes. They cause blockages when they mix with fats, oils, and grease that go down household sinks. Blockages not only disrupt the public wastewater system but if you flush them down your home or business toilets, they could also impact your own property's internal plumbing leading to costly repairs."

Village Voice Funding

The Village Voice has a circulation of 1880 and is delivered free to households in Ashhurst and the Pohangina Valley. The newsletter is run by a small volunteer incorporated society and funded solely by our loyal advertisers. Please support these community-minded businesses. If you wish to support this publication in any way, please refer to the back page and contact Grey Smith.

Ashhurst Food Bank

Christmas Hamper Fundraising

Thank you for supporting the RECAP stall at the Spring Fling at the end of September, where the Plant and Cleaning Raffle raised funds for this community project. After this, the Cleaning Raffle was at the library for further opportunities to purchase tickets and the draw was done on 12th October. Congratulations to Noel Birchall who was the winner and happy recipient of the cleaning and pamper products, worth around \$150.

Ashhurst Food Drive

Saturday, 30th November, is fast approaching and once again, we are looking at the basic necessities for our customers. Popular requests are for baking items (particularly flour and sugar), breakfast cereals of all kinds, tinned veges (creamed corn, beetroot, mushrooms, peas, beans), desserts (such as jellies, custard powder, creamed rice, mousse

sachets), drinks (especially coffee and chocolate drinks), snacks (muesli bars, biscuits, crackers and toppings), spreads of all kinds, and, of course, toilet paper. Tins of fish and spaghetti are also very popular.

Our customers appreciate whatever you can offer and understand that our Food Bank is as unique as our community, with individuals donating fresh, home grown produce during the year and others giving monetary donations to enable the purchase of perishable necessities. Please contact me (Marianne) if you would like to donate money.

For any questions about the Food Drive, how the Food Bank operates, to donate or volunteer, please contact me on 027 627 2054.

Thank you in anticipation of your kind generosity.

Marianne Crawford

Ashhurst Christmas Parade and Market

In last months' Ashhurst Village Voice we were able to confirm that the Ashhurst Memorial R.S.A. Christmas Parade and Market Committee were well underway with the planning for this year's event. This month we can confirm that the date to put in your diaries for our treasured community event is Saturday, 7th December. The market will open at 10.00 am and the parade itself will start at 11.00 am. The Feilding Pipe band are already confirmed and we are excited to see many of our local organisation's registering floats for the parade. The market has food trucks booked for the 'eat street' as well as stalls booked for inside and outside the Village Valley Centre. Whilst we do have a few spaces available for last minute market registrations, we are really excited to have so many stall holders registered already.

If you would like to register your entry to

the parade or wish to take one of those last stalls in the market, then please contact the committee on their Facebook page [Ashhurst Christmas Parade and Market](#), or by email at ashhurstchristmas2023@gmail.com.

The promotion boards will soon be going up around Ashhurst, so save the date—and keep an eye on our Facebook posts.

And to everyone reading this edition of the Ashhurst Village Voice—we look forward to seeing you on 7th December at the Ashhurst Memorial R.S.A. Christmas Parade and Market.

Ashhurst Christmas Parade and Market Committee 2024

(a dedicated group of volunteers working to bring the Ashhurst Memorial R.S.A. Inc Christmas Parade and Market to life for 2024)

Cans for Wool

You may have seen the Good Sorts segment on TV on Sunday evening where a group in Putāruru were collecting cans to buy wool to make blankets to go to Eastern Europe. Well we are doing the same thing right here in Ashhurst. As the coordinator for Manawatu Operation Cover Up, I am responsible for ensuring that my ladies

have wool to knit with. There are about ten ladies here in Ashhurst that knit regularly for Operation Cover Up, We meet at the Anglican Church Hall Mondays 1.00 pm - 3.00 pm and Wednesdays 9.30 am - 11.30 am. For more information about this craft group please contact Marianne on 027 627

Continued on next page

VILLA
JOINERY
Quality Kitchens
Designed & Manufactured
135 Mulgrave Street, Ashhurst, Palmerston North
P: 06 326 8849 F: 06 326 9745
E: sales@villajoinery.co.nz



Practical, friendly and affordable animal care

Phone: 06 326 9257

Mobile: 027 572 9353

Clinic Hours

Monday 8.30am - 5.00pm

Tuesday 8.30am - 5.00pm

Thursday 8.30am - 5.00pm

Saturday 9.00am - 12 noon

Wednesday & Friday evenings by appointment

141 Cambridge Avenue

Cans for Wool

2054.
So the aluminum drink cans can be dropped off at 6 Guildford Street. Please rinse them out so that we don't get an ant infestation. If you want to be very kind to my husband, then please take the tabs off the cans and put them into a snaplock bag. The tabs go to Kantabs Project which

helps Kiwi Kidney Kids support children with kidney disease and their families. So any donations of aluminium drink cans or wool would be gratefully accepted. Many thanks.

Ruth Beale—Operation Cover Up Coordinator Manawatu

Ashhurst Drama Group

We have two great play options lined up to commence rehearsals in February 2025. Production is scheduled for early May 2025.

We are seeking keen actors to have a go at auditions for roles in the upcoming comedy plays. The roles are for both mature and younger persons.

entertaining our community with amateur theatre for over 50 years.

Come along and join the fun.

Auditions are on the 10th November. Starting at 4.00 pm through to 5.30 pm at the Ashhurst School hall Cambridge Ave.

Any queries or interest you can reach us through Facebook or 0276549801.

The ADG team

Ashhurst Volunteer Fire Brigade

Kia Ora Ashhurst,

A few weeks ago, we celebrated our annual Honours and Awards evening. This is an opportunity for us to let our hair down and celebrate the year with our peers and partners whilst awarding due honours and awards.

This year's list was quite long and as Secretary (whose job it is to order them all) I was quite excited!

We had four certificates to present for recruits, drivers and pre-officers courses completed.

Service-related honours awarded were: two five-year medals, nine two-year silver bars, one two-year gold bar and two 14-year Long Service Good Conduct medals presented by the Mayor. These awards

recognised a staggering 125 years of combined service!

Our Brigade also has two in-house awards: the Combined Attendance Award (for most trainings and callouts attended) and the Brigade Member of the Year. Both of which were received by yours truly. I was very proud and humbled to receive both these awards.

After a hearty feed we had some drinks and a few dances too.

I want to thank my fellow Firefighters for all their dedication to the community which was recognised on the night. It is an honour and a privilege to serve Ashhurst and the valley alongside you all.

Matt Clark—QFF, Secretary Fire Risk Management Officer

County Fayre Update

It has been a busy time at County Fayre over the past months, here's what's been happening:

Thank you to the Manawatū Rural Support Services in conjunction with MediTain for providing a "Emergency First Aid" course at County Fayre during August. This was well attended and was a great training event.

We celebrated Fathers in September with every father coming into County Fayre on Father's Day being provided with

homemade treats.

At the end of September, we had a full house at a very successful Readers and Writers Festival where an excellent line-up of eight published writers from the Pohangina Valley and surrounding areas, providing an impressive range of experiences across a wide range of topics. This was very well received by our enthusiastic audience. Thank you to the writers who presented, to those who

Continued on next page

JustOnePlease

Super kia ora. The item for September for the Safe House is **Pegs..**

A massive 'thank you' to everyone who has donated this year. I will start this charity up in February. Kind regards, Louise Bowe. Donations can be dropped off at the Ashhurst Library. Contact Louise Bowe on 020 410 86128 for more information.

Meditation Class

Overcoming Stress and Anxiety will be held every Thursday from 10.00 am - 11.00 am, followed by morning tea. Suggested donation: \$7.

Join us in the lounge of the Village Valley Centre. No special clothing is required. Everyone is welcome. For more information, go to www.meditateinpalmerstonnorth.org.

Ashhurst Ladies Coffee Group

10.00 am—11.30 am at The Village Coffee & Co, 62 Cambridge Avenue, Ashhurst. A regular Thursday weekly coffee group, for ladies of all ages in Ashhurst for some social time, a few laughs and new friendships.

WE NEED YOUR HELP!



Calling all residents...

We're on a mission to make our area one of the safest, best prepared and friendliest in New Zealand! Whether you're a new or long-time resident, Palmerston North Neighbourhood Support is here to help you:

- Get to know your neighbours
- Receive emails + alerts that will keep you up-to-date
- Gain tips and resources, including from NZ Police
- Be able to give back or receive support
- And much much more, all for FREE!

To learn more or get involved, visit us online or contact:

Palmerston North Neighbourhood Support

Alison Jarden JP, Manager
06 355 4468 | 021 0248 4139
info@pncitysupport.com
www.pncitysupport.com



Creating safe, resilient and connected communities.

herb farm | CAFE

Spring has Sprung at The Herb Farm!

The perfect place to meet for coffee and lunch. Nestled amidst lush greenery and aromatic herbs, our warm and welcoming cafe offers delicious fresh meals and barista made coffee. This spring, let us be your go-to spot for unforgettable gatherings and heartwarming moments.

86 GROVE ROAD, ASHHURST
PH 06-326 7479 | herbfarm.co.nz | @herbfarmcafe



CAFE - GARDENS - SHOP - WORKSHOPS & EVENTS - FUNCTIONS

Colyton Road Homekill

Mike

Phone/Text 027 978 1269

- ★ Primary Industries Approved
- ★ Trade Certified Butcher
- ★ All Aspects of Homekill

20 Colyton Road, Feilding



Awahou Pohangina Playgroup

'A lovely country playgroup' est. 1967.
Meet every Wednesday during term
time 9.30am-12.00pm.

Location: Awahou School Hall, 518
Pohangina East Valley Road.

Drop in for a visit, enjoy a cuppa,
morning tea and chat. Contact: Arna
Taylor—samnarna@outlook.com

Ashhurst Memorial R.S.A. Inc

74 Cambridge Avenue, Ashhurst.
Phone: 326 8296

Monday 3.00 pm-6.00 pm

Tuesday 3.00 pm-7.00 pm

Wednesday 3.00 pm-10.00 pm

Thursday 3.00 pm-9.00 pm

Friday 3.00 pm-11.00 pm

Saturday 2.00 pm-7.00 pm

Sunday 3.00 pm-6.00 pm

Manawatū Rangitikei Methodist Parish—Ashhurst, Bunnythorpe and Pohangina Congregation

Ashhurst Devonport Worship and
Community Centre

10.30 am 1st Sunday each month

Pohangina Community Church

10.30 am 3rd Sunday

Contacts: Parish Office—323 4127
Selina Brightwell—022 184 2337 or
326 8355

Ashhurst Bowling Club

67 Stanford Street.

Opening Day September 14th at 1.00
pm. Club Days each Thursday. Names
in by 1.15.

New bowlers or anyone thinking about
playing please either come along and
have a go or get more info from
Adrienne on 027 2836317.

County Fayre Update

organised it and to those who attended
this event, we look forward to holding this
event again in the future.

The Art Trail Manawatū was once again
supported by County Fayre where we served
up three local artists (Barb Hyde, Jill
Walcroft and Jane Ryrie) as our
contribution to this weekend of art.
Congratulations to our artists, your work
was appreciated and viewed by a number
of visitors to the area.

Are you looking for a voluntary role?
Come and join County Fayre as a volunteer
to help in the kitchen once a month on a
Sunday afternoon serving our delicious
Devonshire teas, or just become one of our
friends on Facebook (<https://www.facebook.com/CountyFayre>), everyone is
welcome to join in.

Christmas and Festival holidays are fast
approaching, County Fayre will be closed
during this time. Our last Sunday open for
2024 will be Sunday, 15th December. We
will reopen our doors in the New Year, on
Sunday, 12th January 2025.

If you would like to make contact, then
email us at countyfayre@inspire.net.nz or
send a message via our Facebook page
<https://www.facebook.com/CountyFayre>.

Looking forward to seeing you at County
Fayre.

**Joanne Morris-Kynoch—County
Fayre President**

Ashhurst Senior Citizens Association

A successful and enjoyable October
meeting of the Ashhurst Senior Citizens
Association was hosted by the Ashhurst
Brethren Ladies. First up was a lively
rendition of several musical pieces
performed by the Feilding Brass group and
there was a lot of foot tapping to the
music! The next presentation was by Ruth
Priest who spoke about the Missions
Without Borders charity which relies on a
wide group of volunteers to provide knitted
garments for distribution in areas of Europe
experiencing conflict such as war and
poverty. A display of garments showed the

colour and skill lovingly put into this
knitting and the small toys made to be
attached to blankets were much
appreciated by the audience. A friendly
social time was held while enjoying a tasty
and popular afternoon tea.

The first Thursday of each month at 2.00
pm in the Bamfield Street Hall is the venue
for the friendly and entertaining meetings
of the Ashhurst Senior Citizens
Association. Please feel encouraged to
attend, you will be most welcome.

Stephanie—Secretary

RECAP Update

The RECAP Permaculture Garden Tour
had around 100 attendees this year, and
this event is only a success due to the
generosity and mahi of many in our

community.

Ngā mihi nui to these groups and
individuals:

Continued on next page



Talk to the specialist!

Ashhurst's only real estate office,
Next to the lotto 4 square, Cambridge Avenue

Emma Tankersley Residential Sales Consultant
M 027 566 3778 E emma.t@pb.co.nz f PBAshhurst

Property Brokers Ltd Licensed REAA 2008

Property Brokers^B

pb.co.nz

your local ashurst electrician

Knowles Electrical

Electrical •
Home Ventilation •
Security •
Heat Pumps •

Michael Knowles
registered electrician

M 022 024 8156

E michael@knowleselectrical.co.nz

W www.knowleselectrical.co.nz

no travel or service charges within the village mon-fri

For all your automotive needs

**VILLAGE VALLEY
AUTOMOTIVE Ltd**



- WOF
- TYRES
- REPAIRS
- BATTERIES
- SERVICING
- TRAILER HIRE
- SPIT ROAST HIRE
- AIR CON SERVICING
- WHEEL ALIGNMENTS

Ph 06 326 8239
www.vva.co.nz

@ office@vva.co.nz

📍 54 Cambridge Ave, Ashhurst

RECAP Update

The garden owners Sharon Corkran and Kevin Gillanders, Nikhila Vijay and Gordon Wake, The Deans. Phil Stevens, Ellen and Nathan Wansbrough, Helen King, Harvey Jones and Ian Stark.

To our wonderful local businesses who offered discounts for participants: The Local Backyard Cafe and Bakery, Sarah Frater at Edible Garden, The Herb Farm, Suzanne McAllen Pottery, Boutique Bash Giftery and Tiro Roa Gardens and Nursery. The wonderful Julie Doyle who leads the volunteer team at McCrae's bush and our dedicated board members. All proceeds from the tour go straight back into our community, funding our various services, projects and green spaces.

We are slowly winding down our activities for the year, but our last project is working alongside the Ashhurst Food Bank and R.S.A. to create Christmas Hampers of kai for those in need in our community. We are fundraising in a number of ways—you can donate items via a box we have set up in the Ashhurst Library. This year we are after any non-perishable items you'd typically associate with a nice Christmas meal: sweet treats, nuts, crackers, chips, soft drinks, juices, jelly packets, berry or passionfruit syrups e.t.c. Please do not use the box for out of date pantry items. We are running two raffles—one is a spring clean and pamper pack currently at the Ashhurst Library and we will have a stall at the Ashhurst Christmas Market with a Christmas pack. If you would like to make a monetary donation, please contact chris@recap.org.nz for more information.

Community Kai (our food rescue distribution service, which runs each Tuesday, 3.15 - 4.15 from the back room at the Ashhurst Library) has had a bumpy couple of months. We received a heads up from our main supplier that donations were becoming extremely low, so made the decision to restrict access to the service to community services card holders only. Of course, as soon as we did this donations

started ticking up again! We have now settled on a model where if we have enough kai to share on the day we will open this up to the wider community. For weeks where donations are down, you will need to show a community services card. This will be communicated via our dedicated facebook page ([facebook/RECAP Community Kai](https://www.facebook.com/RECAPCommunityKai)) and Ashhurst Chat each Tuesday. If you would like your child or teenager to pick up for your whānau, you will need to email me with their full name and a photo of your community services card and we can pop them on the list (this is due to past issues with some kids dumping kai around the village). Hopefully this model will work moving forward with the uncertainty around supplies.

The Sharing Shelf. We've been lucky to have large volumes of donated commercially grown vegetables which have been offered on the shelf. Sadly, we've also gotten word that some have been thrown around neighboring streets. The shelf is on Council property and there are cameras which film the garden space and library. We don't want to have to chase down those who are responsible or remove the shelf. Thank you to the community members who picked up the dumped produce.

Volunteer Library Gardening happens most weeks led by our wonderful deputy chairperson Suzanne. She updates [facebook/Ashhurst Chat](https://www.facebook.com/AshhurstChat) each week, so if you're keen to get involved you can get in touch there or email: schelius@hotmail.com. Everyone—all levels of experience and ability—welcome. Come along as a one-off or as a regular.

Please note: there is no Crop Swap in December. We will see you again in February (with lots of late summer produce, hopefully!)

Have a wonderful (and safe) summer.

Chris Love—RECAP coordinator

Book Review: Murder on Milverton Square

Murder on Milverton Square—by GB Ralph (A Milverton Mystery)

Memo to Ashhurst residents—We now have our very own "Midsomer Murders" in print! Can you guess who done it?

The first of a mystery series by local author G B Ralph, this story features Wellington businessman Addison Harper. Addison receives an unexpected phone

Continued on next page

Steady As You Go

Steady As You Go—A falls prevention programme. One hour of slow purposeful exercises for Seniors, aimed at strengthening weakened leg muscles and helping to improve balance. \$2 per session. Otangaki Lodge, 69 Oxford Street, Ashhurst

Contact Age Concern phone 355 2832 for more details.

St. Columba's Catholic Church

St. Columba's Catholic Church would like to welcome you to join us for Vigil Mass, celebrated every Saturday at 5.00 pm.

Ashhurst Scouting

Keas (Mon 5.30 pm-6.30 pm), Cubs (Wed 6.00 pm-7.30 pm) and Scouts (Mon 6.45 pm-8.15 pm), during school terms.

Contact Julie (Group Leader) on ashhurst@group.scouts.nz for more info.

A.P.V. PLUMBING LTD
Kenny Allison
Registered Craftsman
Plumber/Gasfitter

- Free Quotes & Consultation
- Plumbing & Gas
- Central Heating Installations
- All Work Guaranteed
- Competitive Rates

22 Mulgrave Street
 Ashhurst
 M: 027 241 3457
 E: apvplumbing@xtra.co.nz
NO JOB TOO BIG OR TOO SMALL !!



Top Notch Chimney Sweeps
Nigel Scrimshaw 027 486 8464
topnotchchimney@xtra.co.nz
 Quality Chimney Sweeping
 Repairs and Maintenance Available
 Rental Property Assessment
Don't deny your biggest investment the specialist sweep it deserves

topnotchheatpumpcleaning@xtra.co.nz
 A filter and coil clean equals
 quicker startup,
 better working times to maintain desired
 temperature
 A healthier home

Top Notch Heat Pump Cleaning

www.topnotchchimneysweeps.co.nz





County Fayre at Pohangina
 The creative, social and historical heart of the Pohangina Valley
Open Sunday 1.00 pm—4.30 pm
 Open Weekdays by arrangement
 976 Finnis Road, Pohangina

- Historic Maps and Photographs
- Roll of Honour
- Crafts and Produce
- Devonshire Afternoon Tea/Coffee
- Scones
- Muffins
- Ice Cream Sundates
- Milkshakes

Available for hire for small events
 EFTPOS and FREE WIFI now available
 Find us on Facebook at <https://www.facebook.com/CountyFayre>
 or Email countyfayre@inspire.net.nz

We are a community based project run by volunteers



Ashhurst Plunket

Tuesdays and Wednesdays by appointment only.

Contact www.plunket.org.nz, or 027 276 8145.

B4 School Check

The B4 School Check is the final Well Child check.

Free for all four year old children. It includes a distance vision screening test, audiometry hearing test, height, weight, dental health and child development.

Contact 0800 692 445

Strength and Balance Ashhurst

Move it—or Lose it! Join our friendly group for a gentle, low impact exercise class, (no floor exercises) with an emphasis on fun. Optional—go for coffee afterwards.

Village Valley Centre, Monday mornings, 9.45am-10.45am.
Cost: \$10 per class.

Enquiries: Maria—phone 329 4166

Ashhurst Budgeting Service

Thursday 9.30am-1.00pm.

Operating from St Mary Magdalene Anglican Church, 67 Cambridge Street, Ashhurst.

For Appointments contact: Manawatū Home Budgeting Service. Phone: 358 2279; Cell: 0800-228 343.

Ashhurst Foodbank

Open 2.30pm-3.30pm every Thursday. Methodist Church, Bamfield Street, Ashhurst.

Contact: Marianne 027 627 2054

Ashhurst Red Cross

Secondhand Shop, Cambridge Avenue. Summers coming, we have *lots* of new seasons clothing, toys books, household items and treasures. Keep the Christmas cost down with bargains for the shop, you can visit us. Monday-Thursday 12.30pm-2.30pm Friday 10.00am-1.00pm or when the flags are out.

Donations; good reusable items gratefully accepted *only* when the shop is open.

Book Review: Murder on Milverton Square

call from Milverton Square lawyer Cecil Norman and it transpires that Addison's uncle has recently died and left him a very unexpected inheritance. This entails a trip up to Milverton by train to call on the lawyer in Milverton.

When Addison arrives in the small town he meets many interesting locals as he finds his way to the lawyer's office (you will recognise many local attractions—river, wind turbines, walkways, ranges etc), maybe the locals themselves are not so recognisable!

But, you see, he never gets to meet the lawyer because on arrival at his office he finds him dead on the floor, probably murdered. How, when and by whom is the mystery. There are many twists and turns,

as Addison learns more about his previously unknown uncle, it appears there has been much ill-feeling over the new highway to be cut through the ranges. Some people are very displeased at the turn of events, particularly those who might lose valuable land in the process.

It definitely appears to be a case of murder and there are a few suspects and a few people who are acting very suspiciously, Who stands to gain the most out of this crime? Addison feels obliged to stay longer in the town and try and solve this one himself.

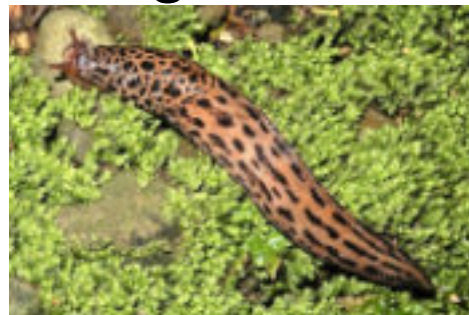
All good clean fun, chatty, cosy and oh so close to home.

Robin Dare

Introduced Slugs

In an earlier article I discussed our native slugs which are known as Leaf Veined Slugs on account of the leaf-vein pattern they usually have on their upper surface. In this article I want to discuss the introduced species, only a few of which will be familiar to most people. In contrast to our native species, introduced slugs tend to be associated with human habitats and crops, rather than forest habitats, and they also mostly feed on plants which native slugs don't.

New Zealand has about a dozen species of introduced slugs, of which the most common are a couple of species in the genus *Deroceras*. Going by names such as the Grey Garden/Field Slug or Milky Slug, these species feed on garden plants and agricultural crops alike, so are a significant pest. They can be up to about 50 mm in length. Threeband Slugs (genus *Ambigolimax*) are also very common and of similar size or slightly larger. They have three dark coloured lines running along their upper surface, although the middle line is often quite faint (see photo).



Our largest introduced slug is the Leopard Slug (genus *Limax*) which can reach 150 mm in length (see photo). It is sometimes found in gardens but also in open grassland, including at the Ashhurst Domain. Although large, it is not really regarded as a pest. Another quite large slug (up to 100 mm), in the same family as the Leopard Slug, is the Yellow Cellar Slug (genus *Limacus*). It is often found near human dwellings though I have found them at the old city cemetery and at the

Continued on next page

Photos: Left—Threeband Slug; Right top—Leopard Slug, Right bottom—Yellow Cellar Slug


Riverside Orchards

**For Your Fresh Fruit and Vegetables,
Fresh Baked Bread,
Cheese, Milk, Family Pies**

Daily delivery into Ashhurst and Palmerston North
Order online now at www.riversideshop.co.nz

1346 Napier Road (opp Petrol Station) Ashhurst
P: 06 326 8800 F: 06 326 8750. E: sales@riversideshop.co.nz

O'LEARY TREE SERVICES LTD

Craig O'Leary

Dip. Hort/Arb. Certs, Trade Cert. Hort.
30 Years Experience

**Tree Removal & Trimming
Pruning, Hedge Trimming**

P. 06 326 9688 M. 027 672 7747

Introduced Slugs



Esplanade (see photo, which also includes a native Leaf-Veined Slug on the left).

Another group of smaller slugs (up to 35 mm) that can be pose a problem in gardens and crops is the *Arion* group. They are often dark coloured with a yellow or orange foot but one species, called the Hedgehog Slug, is quite pale in colour (see photo).



Finally, two less common, medium-sized slugs (up to 50 mm), both of which belong to the same family, are the Greenhouse Slug (genus *Milax*) (see photo) and the Budapest Slug (genus *Tandonia*). They are occasionally found in gardens and greenhouses.

Grey Smith

Photos: Left—Hedgehog Slug; Right—Greenhouse Slug

Ashhurst School

Kia ora e te whānau,

It is hard to believe that we are already into Term 4, 2024. It is lovely to see the sun shining and hopefully Summer is on the way.

Elite Sports Basketball

The Elite Sport Basketball team competed at the Arena on Tuesday 17th September. The team performed extremely well by winning all 3 pool games, and winning their semi final game. They then played a back and forward game in the final vs Roslyn (who they had narrowly beaten 34-33 in pool play). The game went down to the wire. Roslyn scored in the final minute to secure the win 44-42. The team should be very proud of their efforts for the whole day, placing 2nd out of the 8 Elite Sport teams.

Comedy Night

We recently held our PTA Fundraiser Comedy Night at the Village Valley Centre with Ben Hurley and Hayley Sproull. It was a fantastic night and I am sure everyone that attended enjoyed the evening .

William Pike Challenge

Last term a group of students involved in the William Pike Challenge headed down to McCrae's Bush to complete some community work. We would like to thank Chris from RECAP and Julie who volunteers with McCrae's Bush for providing students with this opportunity.

Staffing updates

On the staffing front, we are pleased but saddened to announce Mr Gerber in Room 17 has been accepted to a permanent

Continued on next page

Ashhurst Yoga Classes

Gentle beginner to intermediate yoga classes are running weekly on Wednesdays, 9.15am - 10.00am at the Village Valley Centre.

Cost is \$10.00. Please bring your yoga mat.

Working to your own level we focus on mindfulness, building and maintaining strength and flexibility—you don't need to have either to start yoga!

Phone or Text Vanessa: 027 243 0187 or email vlbphotography@inspire.net.nz, or visit www.vlbphotography.co.nz.

— Sewing —
— Alterations —
— Repairs —
— Hemming —

Pickup & Delivery Service
Colleen Blair
Hanlon Road, Ashhurst
027 341 8077



Manawatu Contracting
& Drainage Ltd

Ashhurst's LANDSCAPE SUPPLY YARD

- ✓ Topsoil/Compost Mix
- ✓ Organic Compost
- ✓ Organic Lawn Mix
- ✓ Organic Vege Mix
- ✓ Organic Garden Mix
- ✓ Topsoil (screened)
- ✓ Weedmat 1 & 2m
- ✓ Black Mulch
- ✓ Bark Nugget
- ✓ Lime
- ✓ Pea Straw
- ✓ Pea Metal
- ✓ Crusher Dust
- ✓ Builders Mix
- ✓ Nova Coil
- ✓ Mulch
- ✓ 5mm Screened Sand
- ✓ 20mm Washed Stone
- ✓ Crushed Rotten Rock
- ✓ AP20 Top Course
- ✓ AP65 Base Course
- ✓ Cement Bags 20kg
- ✓ RTU 45 Min Concrete Bags 20kg
- ✓ 20mm White Chip

Contact: Greg 027 557 8809

greg@manawatucontracting.com

145 Mulgrave Street, Ashhurst
just along from the PNCC Recycling Centre

HOME DELIVERIES AND BULK DELIVERIES AVAILABLE

LJ Hooker

Your Ashhurst
Property Specialist


*If you are thinking about
selling call me first.*



Peter Colville

021 474 557

peter.colville@ljhookerpn.co.nz

 Peter Colville -
LJHooker Palmerston North

Manawatu (1994) Ltd - Licensed REA 2008

Ashhurst Playcentre

Licensed Early Childhood Education Provider. Over 50 years in your community. Spaces now available for children 0-6 years.

Call 326 9270 or email ashhurst@playcentre.org.nz or drop in for a free visit and a cuppa.

Monday 10.30 am-2.30pm

Tuesday and Thursday 9.00 am-1.00 pm. 118 Stanford Street, Ashhurst

Ashhurst Clay Target Club (claybird shooting)

Meets the last Sunday of every month from 9.30 am at 651 Valley Road. Anyone welcome to join us

Queries: Ken Simonsen, Phone: 329-4800

Ashhurst and District Senior Citizens Association Inc

Meet on the first Thursday of each month in the Methodist Church Hall, Bamfield Street, at 2.00 pm. We invite you to come along and enjoy an afternoon of friendship and entertainment.

Contact: Adrienne Harding—Secretary 027 283 6317

Local Justices of the Peace

Mrs AK Rutherford—Available by appointment—027 404 8551

Mr F Saua

Pohangina Road RD 14—029 254 3206

Mr JC Culling

Pohangina Road—329 4825

J Wakeford

Hiwinui—022 319 0434

Craft on Cambridge

At the Chapman Hall, Anglican Church, Cambridge Avenue, on Monday afternoons 1.00 pm-3.00 pm and Wednesday mornings 9.30 am-11.30 am. B.Y.O. craft and the cost is \$2 each time.

A friendly, relaxed group who can help with your UFOs!

Contact: Marianne Crawford 027 627 2054

Matwork Pilates Sessions

Tuesdays at 6.00 pm—55 minutes. Centennial Room at the Village Valley Centre.

Free first session. Bring a mat or \$12 mats available.

"In 10 sessions you will feel the difference, in 20 you will see the difference, and in 30 you will have a new body." Joseph Pilates

To register contact Narrelle 021 2673676

Ashhurst School

position as Principal of Waikaia School in the deep South. This position will begin in 2025. Congratulations to Phillipus and his lovely family and we wish him all the best

for his new journey.

Heath Chittenden—Principal

Karyn Giles—Deputy Principal

Te Ahu a Turanga Highway Update

It may have been subjected to floodwaters, high winds, poor ground conditions and engineering challenges but Te Ahu a Turanga: Manawatū Tararua Highway's largest bridge is nearly finished.

Just three years ago, the project team was celebrating the completion of the first piles (concrete poles) at Parahaki Bridge, the 300-metre-long structure crossing the Manawatū River.

Now they are preparing for their biggest milestone yet: the completion of the bridge deck, which allows the team to walk from end to end.

The bridge deck is comprised of 54 concrete segments, each cast in situ (onsite) using a balanced cantilever method. To build this type of bridge, construction devices called form travellers are required so the teams can pour the concrete segments out from each pier.

When two sections of bridge deck become close to each other, a stitch pour is required to connect them. The team has completed two stitch pours and are now preparing to stitch together the remaining two sections out from pier 3 before the end of the year.

By December, the bridge should be structurally complete, with final touches such as barriers still to be installed.

The completion of Parahaki Bridge is a massive achievement considering the complexity of building such a large structure over a river, which is also a fault line, and in an area with challenging ground conditions and strong winds.

Just a few metres north of Parahaki Bridge, the project's second largest structure, the Eco-Viaduct, is also nearing completion. The team has almost finished installing the barriers on both sides, with finishing touches to be done before the whole structure is completed by early 2025.

The completion of this bridge is another major achievement, with the team having to overcome significant engineering

challenges to get it built. These include encountering unprecedented artesian water pressure, which delayed construction of the piles for about 15 months.

Despite these challenges, the team has worked incredibly hard to make up time, and the bridge is on track for completion on time.

Elsewhere around the project, the pavement crews continue to make great progress constructing the road, with more than half of asphalt placement complete.

Other parts of the road are still seeing the lower layers of the pavement being laid, but 97% of the alignment is now covered with pavement aggregate.

Teams have also started placing layers of Stone Mastic Asphalt (SMA), the final surface layer that provides additional skid resistance.

Work begins on minor features

While many of these updates have focused on bigger aspects of construction, there are also a number of small yet important features that are currently underway on the site.

One of these is the installation of electronic Variable Message Signs (VMS), which alert drivers to things like accidents, roadworks or adverse weather conditions.

The VMS boards are connected to a weather station, wind sensor and visibility sensor to ensure road users are getting relevant information about things that may affect their journey.

Te Ahu a Turanga will have two VMS boards, one positioned near Parahaki Bridge at the western end, and the other near the Woodville roundabout at the eastern end.

Teams are currently building the foundations for these signs - which are nearly 5-metres wide and 2.5-metres tall - before the posts and boards are installed over the next few weeks.

Another piece of minor work is the

Continued on next page



Always Looking After the Locals
Village Four Square and Lotto

**All You Need!**

- ◆ Groceries
- ◆ Fresh Produce /Meat
- ◆ Magazines,
- ◆ DVDs,
- ◆ Beer/Wine,
- ◆ LPG Gas Swap/New Bottles
- ◆ Lotto

Ashhurst Medicine Depot**Hours**

Monday—Friday: 7.00am—8.00pm

Saturday: 7.30am—8.00pm

Sunday: 8.00am—8.00pm

Public Holidays: 8.00am—8.00pm

Pravin & Padmini Patel welcome you at

141 Cambridge Avenue, Ashhurst

Phone: 326 8014



**The Bottle-O
Ashhurst**

Real Locals, Real Value

Open 7 Days

62 Cambridge Avenue, Ashhurst

06 777 5119

tboashhurst@gmail.com

Like us on Facebook 

Te Ahu a Turanga Highway Update

installation of street lighting at both roundabouts.

Lighting has already been installed at the western roundabout, while the Woodville roundabout lights will be installed by the end of the year.

Other works like wire rope barriers and lane marking will be completed over the coming months as the road surface gets

completed.

More information

For more information about the project, head to WWW.NZTA.GOV.TZ/PROJECTS/TE-AHU-A-TURANGA/ or visit the Ashhurst Library or the Visitor's Centre at our Project Office for the latest flyover, project updates and the Drive the Highway simulator.

Ashhurst Library

Hi everyone, can we say a big thank you to everyone who took part in our October School Holiday Programme. It was great to have such a good turnout for the events. We really love seeing the community involvement.

Keep an eye on our Facebook page for registration details, and please feel free to come in and talk to us about the programme.

Ashhurst Elevenses

Ashhurst Elevenses is held every Friday at 11.00 am during term time.

Our community morning tea is a wonderful chance to catch up with new friends and old in a convivial atmosphere. Everybody is welcome. Tea and coffee and the odd biscuit are provided, however if you want to bring along some home baking you are very welcome.

Ashhurst Mighty Kids

Ashhurst Mighty Kids is our preschool programme of stories, songs, games and crafts. We hope to be able to have special guests throughout the term and always finish off with some yummy cheese toasties.

Wednesday, 13th November, 10.30am

Wednesday, 27th November, 10.30am

We will finish off the year with our Christmas party on:

Wednesday, 11th December, 10.30am.

Ashhurst Library Facebook

Just a reminder that if you want to keep up to date with all our latest news, events or announcements, just visit us at <https://www.facebook.com/AshhurstLibrary> and click "Like".

Ross Meads—Ashhurst Librarian

running the office, recording new members, running the club's handicap shooting records, etc. Even prior to that Judy used to help at the clubrooms with her late husband Gary. Some of Judy's

Continued on next page

Anglican Parish of Pohangina

St Mary Magdalene's Church, Ashhurst
8.00 am First Sunday of the Month
10.00 am every Sunday

St Bartholomew's Church, Komako

10.00 am 2nd, 4th and 5th Sundays.
Priest—Rev Pam Barnett. Contact the Parish office for further information:
Phone 326 8543 or

Email: info@parishofpohangina.net
www.parishofpohangina.net

St Mary Magdalene Church—Office Hours (subject to change at short notice): Monday: closed,
Tuesday: closed
Wednesday: 9.30am-3.30pm
Thursday: closed
Friday: 1.00pm-3.00pm

Ashhurst Pohangina Squash Club

Club night is Monday, from 6.00 pm. Come along and give squash a go! All members and newcomers welcome.

Courts are located at the rear of the Village Valley Centre on Guildford Street

Contact Braydon on 027 390 5611, ashpohsquashclub@inspire.net.nz, or find us on Facebook.

Ashhurst Pohangina Lions

The Ashhurst Pohangina Lions meet every second Thursday of the month at the R.S.A. Clubrooms at 6.30 pm. This established and friendly Lions Club is community oriented.

Contacts:

Jack Zwart (President) 326 8958
standishzwart@gmail.com

Brent Besley (Secretary) 329 4891

brent.liz@inspire.net.nz

Mike Forlong (Memberships) 329 4741
forlong@inspire.net.nz

Ashhurst Music Club

Live original music in your back yard
Our club is open to all ages and skill levels. Monthly meetings are about to start so keep watch on the Facebook page and in the Village Voice.

Contact kiwifieldcrew@inspire.net.nz or phone Grant 027 432 7648

Pohangina Rubbish Collection

Rubbish is collected every Monday.
Bags out by 7.30am

Community Garden

Now that we are finally heading into the warmer months, our garden is looking beautiful after such a wet winter. The pond out the back has dried up and the ducks have moved on. We are so fortunate to have a dedicated group of volunteers who look after our garden all year round. We are very appreciative of their efforts, and if you would like to join the crew you would be welcomed with a hot cuppa and something nice to eat after the gardening session. So, if you're keen, come in and talk to us and we will put you in touch with our volunteers.

Summer Reading 2024-25

The Summer Reading Programme is a free and fun programme that supports and encourages the enjoyment of reading, and there has been a great history of kids participating in the programme in Ashhurst. It is for children four-ten years and is great fun for both keen and reluctant readers. Kids earn incentives along the way and we finish with a big celebration party.

There is also the iRead intermediate reading programme for 11-13 years. This involves a series of events over the summer, mixed with sharing book reviews.

Ashhurst Clay Target Club

August

This was a busy day because apart from the shooting which included the traditional Gary Wright Memorial Shoot, we were also saying goodbye to Judy Wright who stepped down from over 20 years of



Come and see the team at Kauri Physio for all your ACC and non ACC injuries

If you are unsure please email and we will advise whether physio is the right choice for you.

KAURI
PHYSIO

619 Featherstone Street,
Palmerston North
Phone: 06 357 4424
Tamsin.mafi@kaurihealthcare.nz

GRAEME BILSLAND PAINTERS

M: 027 581 2510 P: 06 357 3009 E: bilsland@inspire.net.nz

PO Box 20017, Palmerston North 4448



Kids 'n Motion

Now in its 21st year of providing music and movement for 0 - 5year olds within Ashhurst and the surrounding community.

Every Friday 9.45am-11.15am during school terms at the Village and Valley Centre, Guildford Street, Ashhurst. Cost: Gold coin donation.

Contact: Cherie O'Leary, Ph: 326 9688 Check out our Facebook page and like us! Kids 'n Motion is such a great group to come along too—see you there!

Pohangina Yoga Classes

Mondays 6.00pm-7.00pm \$10 per class or \$50 for six classes. Suitable for beginners and those with more experience of yoga.

Contact Catherine: hauorayoga@gmail.com, 021 0270 4400, www.hauorayoga.co.nz, Facebook: Hauora Yoga

Pohangina Local Christian Radio

3ABN Radio is now broadcasting in Pohangina Township on 107.7FM. Offering lifestyle radio with a difference! Broadcast 24 Hours, 7 Days a week for the 'Best News Ever!'

www.3abn.org

Contact Rex 06 356 1141 for Free Bible Studies, Books and DVD's.

River Church

We meet at 131 Cambridge Avenue each Sunday at 10.00am. All welcome.

Pastors Dave and Kellie Ross. Phone 027 247 2179 or 328 4864 (evening)

www.riverchurch.nz



**HOMESTEAD
CATTERY**

*Skilled and caring local staff
with over 14 years experience*

31 Pohangina Road, Ashhurst
Viewing by appointment welcome

Ph: (06) 326 8064

www.homesteadcats.co.nz

Find us on fb.com/homesteadcats



Ashhurst Clay Target Club

Club Handicap: Craig Hocken

Points score 25 DTL: Joby Stella (impressive 75)

Karen Pawson—Secretary



family were at the clubrooms for the lovely presentation and Judy has assured us she will be back—essentially to catch up.

Winners:

Gary Wright Memorial

Craig Hocken (single barrel on handicap)

Club 25 DTL: Brad Turner

Club Handicap Jenny Bucknell

September

There were about five squads and a busy day because we had the A.G.M. between the two club shoots.

Winners:

Club 25 DTL: Joby Stella

Ashhurst Bowling Club

Well there has been mixed weather and unfortunately this impacted on some planned events but things will settle. Most Club Days have happened, Skogs and Elizabeth Walker competitions are underway, Championships have started and most clubs are sending flyers advertising their Open Tournaments. The Tararua Quad has started and after a couple of games Ashhurst is awaiting the win.

The Drawn Fours was won by Pete, Wendy, Jacqui and one of our newest players Arnie. The Drawn Triples winners were Pete, Lee and Arnie. Great days of competitive bowls and lots of camaraderie!

Margaret, Joyce, Jen and Lee played in the Wimsett Cup which is a hotly contested annual event and again Ashhurst showed how competitive we are. The ladies placed 3rd equal, a great result.

The first of the Championships events was played in pretty steady weather and while the Men's Final is still to be played, the Women's Pairs was won by Jen and Margie. There was some really intense bowling to be seen and much of the time it was certainly not clear who the eventual winners would be. The Men's battles were

similarly intense and the final to be played is between Tony and Wayne against Dave and Hugh. Result pending.

Max, Kynn, Brian and Hugh played against Takaro to retain the Tucker Badges, Dixon Cup and Manson Barr. After a steady and hard-fought battle, they weren't the winners but totally well played guys.

We have had visitors from out of town to join our Club Days so remember if you are thinking of trying out bowls, turn up on Thursday about 1pm and you will be very welcome.

Twilight League starts in January this season so more info closer to the time.

Our next big, and I mean big, event is the Ladies Gala on November 13th. As always, a full green and this will be a forerunner of all our successful Open Tournaments. It is always a great day for all.

Club Championship Triples is to be played 16th/17th November and the Singles 23th/24th.

So, we need some steady weather and all will be go on the Green.

Stay smiling, safe and happy.

Adrienne Harding—Secretary.

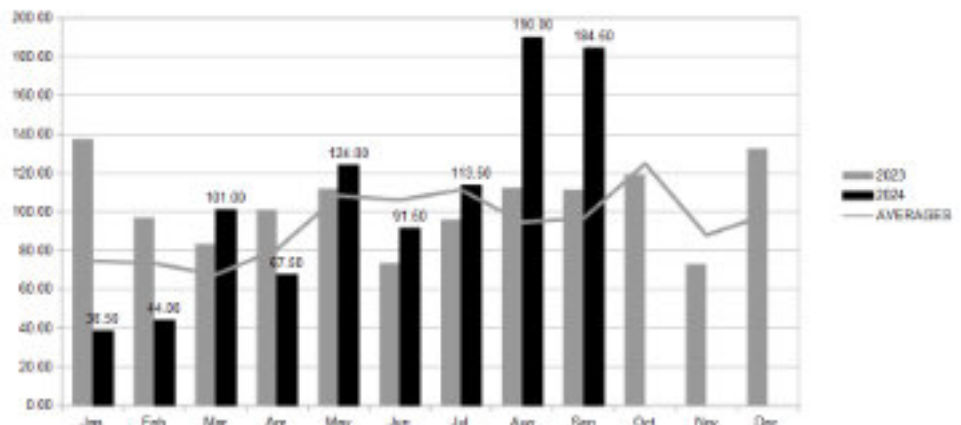
Ashhurst Rainfall

184.5 mm of rain fell in September 2024, well above the monthly long-term average of 99 mm.

Rain was recorded on 15 days, with the highest one-day rainfall of 42 mm on the 19th of September.

Total rainfall for the period January to September 2024 is now 954.5 mm, which is above the long-term average for this period of 818.9 mm.

Quang Mai



GLIMPSE

Mayor Grant Smith

Kia ora

With summer on the near horizon, here we are more-or-less at the 'pointy end' of the year. Functions, school break-ups, shows, Christmas parades, markets and lower interest rates spearhead the hope that our beleaguered retail and hospo sectors can get some runs on the board before the great Kiwi summer close-down sends their regular customers off on holiday.

'Underarm' Tolling

My enthusiastic congratulations to the Ashhurst community and the organisers of the Ashhurst public meeting on the proposed toll for Te Ahua Turanga: Manawatū Tararua Highway. I apologise again for not being able to attend but was in Australia as part of a large delegation investigating transport and logistics operations that could be applied here.

From the video recording, your meeting was a huge success with many pertinent points of view expressed. I loved the 'Underarm Toll' label that one speaker applied to the proposal. NZTA and the select parliamentarians who came along were left in no doubt how the Ashhurst community feels about the highway goalposts being moved at such late notice. Council was pleased to make the Village Valley Centre available at no cost for the meeting, along with covering AV and sound system costs.

My particular thanks to Deputy Mayor Debi Marshall-Lobb, Rangitāne who spoke, and other councillors who turned up to make the city's formal NZTA highway submission clear. To put it succinctly, council opposes this toll and the way the proposal was implemented. I trust that those who attended the meeting likewise expressed their opposition to it by making their own formal online submission.

Thanks also go to Arthur Yeo, Phil Stevens and Heath Chittenden for the impetus they provided to this forum, and to the volunteers who helped make it possible.

Now, will the NZTA Board and the Central Government polities take any notice?

Village Foodbank Drive

This year's pre-Christmas Ashhurst Foodbank Drive takes place on Saturday November 30. Food bags are being delivered to letterboxes prior to the collection of non-perishable food items and other household products. Huge thanks to the Ashhurst Volunteer Fire Brigade, the Ashhurst Pohangina Lions, the Ashhurst Community Trust, and Ashhurst Property Brokers for spearheading this exemplar of Ashhurst community spirit and generosity.

Christmas Parade

The Ashhurst Christmas Committee would dearly love to replicate the success of last year's Christmas Parade and Market Contact the committee and get a float or stall together. The countdown to Christmas event takes over Village streets on Saturday December 7.

Smallholders Auction

One of the biggest and highly popular local events on the New Year calendar will be January's Ashhurst-Pohangina Lions Smallholders Auction. Keep an eye open for details about this wonderful annual bargain bonanza fundraiser and great community day out.

Meet the Mayor

A reminder that the final Meet the Mayor session for 2024 will be on Tuesday, November 26 – this time between 4pm – 5pm at the Community Library. It'll be the last chance to have your say direct to me for the year. Do check the Council website and Facebook page nearer the date for event confirmation.

Ngā mihi nui
Mayor Grant



ASHHURST COMMUNITY LIBRARY

06 326 8646

Open days

Monday	2pm - 5pm
Tuesday - Friday	10am - 5pm
Saturday	10am - 1pm
Sunday	Closed

Access the full range of library digital resources at: citylibrary.pncc.govt.nz

SPLASHHURST! COMMUNITY POOL

06 350 0849

Normal hours

Tuesday - Friday	6am - 9am + 1pm - 7pm during school term 6am - 7pm during school holidays
Saturday	8am - 6pm
Sunday - Monday	Closed

Splashhurst! online:
clmz.co.nz/splashhurst

ASHHURST RUBBISH + RECYCLING

Rubbish bag and bin collection Tuesday morning. Bags out by 7.30am.

Recycling Bin	Glass Crate
5 November	12 November
19 November	26 November
3 December	10 December

MULGRAVE ST TRANSFER STATION

Recycling, green waste and general rubbish disposal.

Open Days

Tuesday	1pm - 3pm
Saturday	10am - 4pm

Council's 24/7 contacts are **06 356 8199**, the **Council Facebook page**, pncc.govt.nz and the **Snap Send Solve** app to quickly report anything that needs attention or fixing.



info@pncc.govt.nz / 06 356 8199 / pncc.govt.nz

Published by The Ashhurst Village Voice Society Inc.

Contacts

Editor: Llyvonne Barber

Phone: 022 051 6315

ashhurst.voice@gmail.com

PO Box 38, Ashhurst

Advertising: Grey Smith

Phone: 326 8075; 021 175 1726

rgcasmith@inspire.net.nz

Proof-reader: Vivienne Dalgleish

Letters to the Editor

Letters under 200 words are preferred.

The writer's contact details are required on all letters (not for publication), including address, email and phone number. We may need to contact you to clarify minor details.

The editor reserves the right to edit, abridge or decline letters or articles without explanation. Pen names or letters submitted elsewhere are not acceptable.

If supplying images, high resolution images are required. Please feel free to contact the editor if you are unable to email images.

We do not accept flyers or pamphlets for publication. Contents need to be provided as articles for publication.

Advertising Rates & Information

Articles and community notices are free. Adverts can vary from a few lines in the side column to a double business card size. Conditions apply. A 15% discount is offered if you pay in advance for a full year (11 issues). A business card size advert is to be 60mm by 100mm at 300dpi and costs \$50.

The cost varies proportionally for smaller and larger sized adverts.

For further information on advertising costs and payments please contact Grey Smith.

For technical details please contact the Editor. Contact details above.

Advertisers, we prefer that you supply files in pdf format. Please note that files supplied in .pdf format are unable to be adjusted from our end. Adverts can be created by the Editor for a small additional cost. These can be adjusted as required.

Village Voice Deadline

Deadline for articles and advertising submissions for the next edition is:

5.00 pm Wednesday, 20th November.

We cannot guarantee your submission will be included after this date.

Member of Parliament—Suza Redmayne

Hi, I'm Suze Redmayne and I'm your local Member of Parliament, representing the mighty Rangitikei of which Ashhurst is an important part.

My job is to represent our community and make sure that local views are voiced loud and clear in Parliament. One of the key reasons I stood for this role was to be a voice for our rural and provincial communities, to tell our stories and to champion the issues that matter to us. Part of this is fronting up on community issues, and right now, most pressing is the proposed tolling of the new Manawatū - Tararua Highway, Te Ahu a Turanga.

There have been a number of community meetings on this matter and I was able to attend the first one in Woodville. My colleagues who attended the other meetings have kept me in the loop, and concerns around the proposal are discussed regularly when we meet. In Wellington I have had several discussions with the Minister of Transport, Hon Simeon Brown, who is acutely aware of local concerns.

Many people have shared thoughts with me about the proposal and I know there is significant worry about how tolling could impact local communities on both sides of the ranges. Whether it's for work, accessing essential services, or delivering goods, travelling is a necessity for many. I've also heard many people say they feel the toll is unjust given that it wasn't raised at the outset of the project, and the proposed figure of \$4.30 for light vehicle use is too high. In addition, I've been told the prospect of Ashhurst's residential streets continuing to carry highway

traffic as a result of people opting to use the alternative Saddle Road route to avoid the proposed toll, is also a worry.



The good news is freight operators have indicated that the time savings and efficiency benefits from a modern reliable highway are significant and they are most likely going to use the new road. The new highway will deliver considerable travel time savings of 12-14 minutes per trip.

I want to assure you I hear your concerns, and I'll continue to be your voice in Wellington. I will keep engaging with my parliamentary colleagues to ensure the unique challenges our community faces with this proposal are given fair consideration.

Now that the tolling consultation period is over, New Zealand Transport Agency will analyse the feedback received and provide an engagement report on their website. They will also make a recommendation to Minister Brown for his consideration regarding the proposed toll. In the meantime, you are welcome to continue sharing your thoughts and concerns with me—I'm holding a coffee catch up at The Village Coffee and Co, 62 Cambridge Avenue, at 10.00 am on Monday, 4th November, and would love to see you there. Alternately, please feel free to email me at:

Suze.RedmayneMP@parliament.govt.nz.

 Samaritans

 We are here

24 hours a day 

Whether you are lonely, unhappy,
ready to end it all

WE ARE HERE TO LISTEN TO YOU

 **358 2442 or 0800 72 66 66 | www.samaritans.org.nz**