



Ashhurst Village Voice

*Informing the communities of
Ashhurst & Pohangina*

ISSN 2324-5468 (Print)
ISSN 2324-5476 (Online)

May 2023

<https://recap.org.nz/village-voice>
Established 1997

ANZAC DAY 2023—Lest We Forget



Photos Credit—Harvey Jones

Contents

Jackie Goes Prima Diva in Pohangina	2
Ashhurst Senior Citizens' Association A.G.M.	2
Ashhurst Village Voice Society A.G.M.	2
Ashhurst R.S.A.	2
RECAP Update	2
Community Comment	3
Book Review	5
County Fayre Update	5
New Zealand Native Wasps	6
Te Ahu a Turanga: Highway Update	7
Ashhurst School	8
Ashhurst Library	9
Ashhurst Clay Target Club	10
Ashhurst Rainfall	10
Palmerston North City Council	11
Ashhurst Bowling Club	12
Village Voice Contacts	12

**Deadline for June Issue
Saturday, 20th May**

Jackie Goes Prima Diva in Pohangina

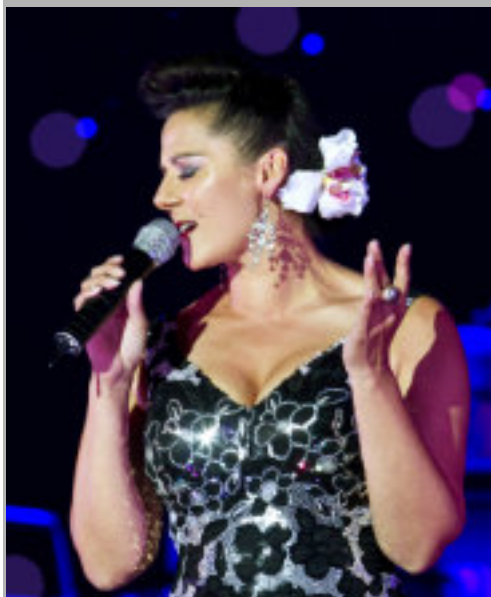
As part of her nationwide tour with Arts on Tour, Jackie Clarke is performing at the Pohangina Hall at 7.30 pm, 3rd June. Using her powerhouse vocals, wicked humour and maverick entertainment style Jackie interprets the songs of the 20th and 21st Centuries most legendary divas.

Tickets are \$35 and include supper. BYO drinks.

Tickets on sale at <https://pohanginavalley.nz/tickets> or email pohanginahall@outlook.co.nz

From Barbra Streisand to Shirley Bassey, from Kate Bush to Lady Gaga, Jackie lets her diva flag fly, while playfully interacting with the audience with trademark witty panache.

Accompanied by her trusty sidekick Maestro on piano, expect iconic songs performed with tender soul and gleeful virtuosity. This will be a night to remember!



Ashhurst Senior Citizens—A.G.M.

The Ashhurst Senior Citizens' Association is holding their Annual General Meeting at 2.00 pm on the 1st June at the Methodist Church Hall in Bamfield Street, Ashhurst.

Ashhurst Village Voice Society A.G.M.

The Ashhurst Village Voice Society is holding its Annual General Meeting at 7.00 pm on Thursday 18th May at the Anglican Church Hall on Cambridge Avenue, Ashhurst. All welcome.

Ashhurst R.S.A.

ANZAC Day this year was a huge success, thanks to all those in the community who supported it and assisted in making the events run smoothly. Without your support this event would not occur.

The R.S.A. is holding a number of events and activities over the coming months. They are:

6th May—Duck shooting competition.

25th June—Quiz Night. Kerry will be back to hold this event bringing her skills and amazing quiz events with her.

Friday Nights—Darts. The Dart Club switches between social and competitive nights. Monitor their Facebook page to find out which nights are social, and which are competitive.

7.00 pm Tuesday Night—Bingo. This is going well and is a good night out. Every Tuesday we run five games with a jackpot round. The more people, the bigger the cash prizes. Come and join in. I hear the bingo caller makes the night. Watch our Facebook page and Ashhurst Chat for more details.

17th June—P Party, The R.S.A. is holding

a P Party. Come dressed up in something that starts with P. A DJ will be on site and there will prizes for best dressed and best dancer through a dance off.

Raffles

Crackers and Cheese Fridays are going well, a special thanks to Mike and Helen Lockwood for preparing these. This is funded through a raffle where you could win \$100. Tickets are available from the bar for \$4.00. The following Raffles are on every Friday:

Welfare Raffle: Winning ticket receives a meat pack. Tickets drawn after the ode.

Women's Section: Two meat raffles drawn once sold at 6.00 pm.

Joker's Wild: Tickets sold from 6.30 pm.

Members Draw: Drawn between 6.30 pm—7.00 pm).

Food Trucks

The R.S.A. has a food trucks on-site on Fridays. Truss Tucker—tasty Thai was a hit. The next scheduled food truck is Dos Locos Tacos on the 5th May.

Major Timothy Cocks

RECAP Update

Kia ora from RECAP.

Next time you visit the Ashhurst Community Garden (next to the library) check out the beautiful new wooden bench seat made and gifted to us all by Hayden and Jo Smith. Hayden and Jo moved to Ashhurst only recently and we are so lucky to have them. They run a tree felling and mulching business—so please show their business some love (Trees & Stumps R Us) as they definitely give this back to their community.

Community Allotments

We need some feedback regarding RECAP creating an allotment style community garden in Ashhurst. This would be ideal for those renting, on small properties or those who need a little support and guidance growing their own produce (although the space would be open to anyone).

This would be a BIG project, with council approval and potentially extra funding to

Continued on next page

Dave's Plumbing Services Ltd

New Homes, Alterations,
Cylinder Replacements & Maintenance

Dave Brown—Licensed Plumber
Phone: 027 249 2304



Practical, friendly and affordable animal care

Phone: 06 326 9257

Mobile: 027 572 9353

Clinic Hours

Monday 8.30am - 5.00pm

Tuesday 8.30am - 5.00pm

Thursday 8.30am - 5.00pm

Saturday 9.00am - 12 noon

Wednesday & Friday evenings by appointment

141 Cambridge Avenue

RECAP Update

achieve, so we need to know before we embark on this whether it is something our community wants, as this would work on the basis of people looking after their own section of land.

Please feel free to email chris@recap.org.nz with any thoughts you may have.

RECAP A.G.M.

Our A.G.M. will be held on Wednesday, 14th June, 7.00 pm—8:30pm in the Village Valley Centre Centennial Room. This is open to the public, so please feel free to join us to find out more about what RECAP has been up to this past year (and what we have planned for the future).

Crop Swap

24th June is the next RECAP Crop Swap at the Ashhurst Community Library. This is a free sharing event, where you don't need to give in order to take or vice versa. It's a great spot to bring fruit from the trees you can't keep up with, some of your glut or excess seedlings. Or just show up to collect the bounty from others. There is kōrero on various gardening topics, so bring your questions, too. This happens on the last Saturday of every second month.

RECAP Community Kai

Keep an eye on the RECAP Community Kai dedicated facebook page as with the uncertainty around donations, some weeks we have enough for everyone, and others will be only for those in real need (we communicate this through the page each week). This continues to be a no-questions-asked service. A big ngā mihi to the amazing team of volunteers who run this service, and to Just Zilch and Mission for Men for their weekly support.

Community Comment

The City Council's budget plans are still under consultation with some of those who lodged submissions adding comments in their oral submissions. Submission numbers appear to be reduced even though the proposed rates increase is still historically at a high level.

The long-neglected plan to have a riverside shared path from Ashhurst to the

Sharing Shelf

We'd like to remind people that the Sharing Shelf (in the garden next to the library) is for food and gardening items ONLY. We have been seeing a lot of clothes and other things left on the shelf, often in a careless manner (e.g, old shoes stacked on fruit) which is frustrating for our staff and volunteers who have to remove these items to donate or dispose of. And please communicate to your tamariki (and mokopuna) that the contents of the shelf are not to be played with or thrown around—we've also had to clean up a number of messes around the garden. This is a community resource, so we would love to see the community take pride in the shelf by keeping it tidy. Ngā mihi.

Seed Library

It's come to our attention that we incorrectly labelled some seeds that were distributed through the Seed Library. If you got broccoli in the last year, what you might have is mustard. So if you wondered why it didn't look like broccoli, it's not you—it's us!

Mustard is a great 'chop and drop crop' which can help your soil, and the leaves can also be eaten - they are peppery (like rocket). Our sincere apologies—they are deceptively similar seeds! You may have also noticed less seeds available in the last month or two as our Seed Library is undergoing a transformation at present, so keep an eye out when you visit the library for a fresh look and major restock.

Look after yourselves and others.

Chris Love—RECAP Coordinator

chris@recap.org.nz; www.recap.org.nz.

city is still technically in the long-term plan. No positive progress has been announced to get past the opposition of a couple of key landowners and negotiate a solution acceptable to all. The Council will rightfully be embarrassed if the shared path beside Te Ahu a Turanga (SH3 to Woodville) and the associated Manawatū bridge clip-on is

Continued on next page

Firewood For Sale

Poplar or Pine available
Phone Ken Pratt 027 498 3718

Dog Walking

I am a 19 year old female with a disability and wish to grow my small business.

Cost is \$10 per 30 minute walk
Please contact Lakeisha Eynon by text 027 214 0848 or by email—eynonlakeisha@gmail.com

JustOne Please

Super Kia Ora Ashhurst and beyond. Thank you for the donations of Hot Chocolate/Milo.

The item requested for the Safe House for the month of May is long life milk.

I appreciate everyone's generosity. You can drop these off at the Ashhurst Library. Contact Louise Bowe on 020 410 86128 for more information.

WE NEED YOUR HELP!



Calling all residents...

We're on a mission to make our area one of the safest, best prepared and friendliest in New Zealand! Whether you're a new or long-time resident, Palmerston North Neighbourhood Support is here to help you:

- Get to know your neighbours
- Receive emails + alerts that will keep you up-to-date
- Gain tips and resources, including from NZ Police
- Be able to give back or receive support
- And much much more, all for FREE!

To learn more or get involved, visit us online or contact:

Palmerston North Neighbourhood Support
 Alison Jarden JP, Manager
 06 355 4468 | 021 0248 4139
info@pnccitysupport.com
www.pnccitysupport.com



Creating safe, resilient and connected communities.

VILLA JOINERY
 Quality Kitchens
 Designed & Manufactured
 135 Mulgrave Street, Ashhurst, Palmerston North
 P: 06 326 8849 F: 06 326 9745
 E: sales@villajoinery.co.nz

County Fayre at Pohangina
 The creative, social and historical heart of the Pohangina Valley
 Open
 Sun 1.00pm—4.00pm
 Open Weekdays by arrangement
 976 Finnis Road, Pohangina



- Historic Maps and Photographs • Roll of Honour • Crafts & Produce
- Devonshire Afternoon Tea/Coffee • Scones • Muffins • Ice Cream Sundaes
- Milkshakes

Available for hire for small events
 EFTPOS and FREE WIFI available
 Find us on Facebook at <https://www.facebook.com/CountyFayre>
 or Email countyfayre@inspire.net.nz
 We are a community based project run by volunteers

Line Dancing

If you are interested in forming a club in Ashhurst- Pohangina please contact Dave at dfountain@xtra.co.nz to get on a mailing list as we find a venue, a teacher, an evening time and a starting date!

Ashhurst Memorial R.S.A. Inc

74 Cambridge Avenue, Ashhurst.
Phone: 326 8296

Summer Hours

Sunday: 2.00 pm—6.00 pm
Monday 3.00 pm—6.00 pm
Tuesday: 3.00 pm—7.00 pm
Wednesday 3.00 pm—9.00 pm
Thursday: 2.00 pm—9.00 pm
Friday: 2.00 pm—11.59 pm
Saturday: 1.00 pm—9.00 pm

Manawatu Rangitikei Methodist Parish—Ashhurst, Bunnythorpe and Pohangina Congregation

Ashhurst Devonport Worship and Community Centre
10.00 am 1st and 2nd Sundays
Pohangina Community Church
10.30 am 3rd Sunday

Contacts: Parish Office—323 4127
Heather Fairless—326 8355

Ashhurst Bowling Club

67 Stanford Street.

Season starts end of September through to mid April.

If you would like more information on lawn bowling, please call or email: Adrienne Harding 326 8972/027 283 6317 ashhurstbowlingclub@gmail.com

Pohangina Rubbish Collection

Rubbish is collected every Monday.
Bags out by 7.30am.

Community Comment

completed before the connecting riverside path to the city.

The stockpile of water pipe in Custom Street suggests that the development of infrastructure for this industrial area is proceeding at last. New and existing businesses will be hoping that the upgrades will include sealing this last bit of gravel road in Ashhurst.

A significant gas leak triggered emergency measures and traffic diversions on Salisbury Street recently. Local residents were warned to stay inside with windows closed and not create sparks or light fires. Once the unintentional damage to an underground gas pipe was fixed and the gas dissipated, life on the street returned to normal.

Repairs to the roads and bridges up the Pohangina Valley, which suffered from the deluge of rain from Cyclone Gabrielle, are slowly making progress. Some washouts have been repaired, and a Bailey bridge put in place further up the valley, but caution is advised while the road is unsealed in many places. The Churchill Road Bridge beside the Pohangina Reserve remains impassable, while engineers try to design a solution. The crossing is too wide to

manage with a conventional Bailey bridge, with options limited due to the flood risks and high riverbed levels. Parents ferrying students to Awahou School from the west side of the valley are struggling with the additional travel requirements and costs.

The return of a medical centre in the village, under Ashhurst Health Care, has been welcomed by residents. While many regions of New Zealand are struggling to meet the medical needs of a growing population, we are fortunate that this Ashhurst clinic is still managing to enrol new patients.

The front of the Health Care building is host to a locked cabinet with an A.E.D. (Automated External Defibrillator) to be used to support someone suffering a heart attack. This was jointly funded by the Ashhurst-Pohangina Lions Club and the Ashhurst Volunteer Fire Brigade. It may be

life saving to know its location, but do ring 111 for ambulance services, who will provide the combination code for access to the cabinet. Remember that there is also a free app for mobile phones (search for 'A.E.D.') to locate the nearest A.E.D., or just key in aedlocations.co.nz to a browser.

Harvey Jones



B

Talk to the specialist!

Ashhurst's only real estate office,
Next to the lotto 4 square, Cambridge Avenue

Emma Tankersley Residential Sales Consultant
M 027 566 3778 E emma.t@pb.co.nz [f](https://www.facebook.com/PBAshhurst) PBAshhurst

Property Brokers Ltd Licensed REAA 2008

Property Brokers^B

pb.co.nz

your local ashurst electrician

Knowles Electrical

Electrical •
Home Ventilation •
Security •
Heat Pumps •

Michael Knowles
registered electrician
M 022 024 8156
E michael@knowleselectrical.co.nz
W www.knowleselectrical.co.nz

no travel or service charges within the village mon-fri

For all your automotive needs

**VILLAGE VALLEY
AUTOMOTIVE Ltd**



- WOF
- TYRES
- REPAIRS
- BATTERIES
- SERVICING
- TRAILER HIRE
- SPIT ROAST HIRE
- AIR CON SERVICING
- WHEEL ALIGNMENTS

Ph 06 326 8239
www.vva.co.nz

@ office@vva.co.nz

📍 54 Cambridge Ave, Ashhurst

Book Review—Grand: Becoming My Mother's Daughter by Noelle McCarthy

Mothers and daughters - there is so much to say on the subject! This outstanding debut memoir will haunt and unsettle you, but has profound truth at its heart.

"I'll be grand girl, I've great faith", Noelle's Irish mother says as she lies dying. Mother Carol is painted so poignantly, she is at once seriously flawed but warm-hearted. She rages against her life, is alcoholic and known all over Cork City as a difficult and dangerous woman when binge drinking in the various pubs she frequents. She often has her children in tow and sits them at the bar beside her with a coke or lemonade in their little hands.

Noelle emigrates to New Zealand to get away from all this, as a young woman, and makes a new and successful life for herself as a journalist. She returns to her family in

Ireland at intervals to catch up with all the relatives she left behind.

I was fascinated with these descriptions of Catholic Ireland in the 70's in Noelle's childhood and later in the 80's and 90's. These parts are often very funny,—you will never forget the character of mammy Carol, a devout catholic whose faith never wavers. The relationship between the two is tempestuous and very emotional, especially when Noelle finds herself about to replicate the very traits she despises in her mother.

How she saves herself from "becoming her mother" is a great story and brings with it an understanding of how her mother's life was shaped in a different world where few choices and strict moral beliefs left little scope to follow her dreams.

Robyn Dare

County Fayre Update

County Fayre really is looking great and it's thanks to the committees of today and every past year, for the huge effort they put in to keep County Fayre alive and running, their support and dedication does not go unnoticed. We are so privileged to have such a fantastic place where the community can meet, view local history, share the products of artisans from our own region. With the leaves changing into autumn colours, Pohangina Village is putting on a spectacular show, come and take a look one Sunday afternoon, sit and relax away from the hustle and bustle of a busy life and taste the delights of homemade scones, with freshly whipped cream and raspberry jam, a steaming pot of hot tea or a plunger of coffee and enjoy the delights of Pohangina Valley.

County Fayre is hosting the following events, ensure you get them into your calendar.

- Sunday, 14th May—Mother's Day
All Mothers visiting County Fayre on Mother's Day will receive a small gift.
- Saturday, 1st July—7:00 pm— 9:30 pm

"Coffee and Dessert Evening". Planning is underway for a feast of delicious midwinter desserts served alongside live entertainment and raffles. Ticket numbers are limited so keep an eye on our Facebook page <https://www.facebook.com/CountyFayre> for ticket sales.

Recently we hosted a group of friends, who were on a cycling journey and had a planned stop to refuel themselves at County Fayre before continuing on their way. Thank you to Val, Kim and Pauline who prepared and provided them with a delicious lunch. If you belong to a group or club and are looking for a place to have a gathering, whether it be mid-week or the weekend, get in touch and we may be able to accommodate you.

We would love to be able to give back and seek individuals, sports or social groups needing assistance to fund a particular activity or piece of equipment. Are you a family whose child would love to join a group or activity and are finding it hard to cover the fees, get in contact and

Continued on next page

Steady As You Go

Steady As You Go—A falls prevention programme. One hour of slow purposeful exercises for Seniors. Aimed at strengthening weakened leg muscles and helping to improve balance. \$2 per session. Otangaki Lodge, 69 Oxford Street, Ashhurst

Contact Age Concern phone 355 2832 for more details.

Ashhurst Red Cross

Secondhand Shop, Cambridge Avenue. Winter clothing instore, books, puzzles and household items galore.

Monday—Thursday 12.30 am—2.30 pm
Friday 10.00am—1.00pm or when the flags are out.

Donations only accepted when the shop is open.

A.P.V. PLUMBING LTD

Kenny Allison

Registered Craftsman

Plumber/Gasfitter

- Free Quotes & Consultation
- Solar Installations
- Roofing
- Central Heating Installations
- All Work Guaranteed
- Competitive Rates

22 Mulgrave Street
Ashhurst

M: 027 241 3457

A/H: 326 9346

E: apvplumbing@xtra.co.nz

!!! NO JOB TOO BIG OR TOO SMALL !!!



Colyton Road Homekill

Mike

Phone/Text 027 978 1269

- ★ Primary Industries Approved
- ★ Trade Certified Butcher
- ★ All Aspects of Homekill

20 Colyton Road, Feilding



For All Things Lashes and Brows



@thelashstudio.ashurst

Victoria

027 270 4818

thelashstudio@xtra.co.nz

Monday - Thursday 6pm - 9pm

Saturday 9am - 5pm

- | | |
|----------------------|-----------------|
| Lash Extensions | Brow Lamination |
| - Classic Extensions | Henna Brow |
| - Hybrid Extensions | Brow Tint |
| Lash Lift | Brow Shape |
| Lash Tint | |

*Bookings can be done via my Facebook Page

Ashhurst Plunket

Every Monday and Tuesday.

Providing family health and wellbeing; child growth and development checks.

For more information call Plunket Area Office—0800 692 445 or 06 357 4844

B4 School Check

The B4 School Check is the final Well Child check.

Free for all four year old children. It includes a distance vision screening test, audiometry hearing test, height, weight, dental health and child development.

Contact 0800 692 445

Strength and Balance Ashhurst

Move it—or Lose it! Join our friendly group for a gentle, low impact exercise class, (no floor exercises) with an emphasis on fun. Optional—go for coffee afterwards.

Village Valley Centre, Monday mornings, 9.45 am—10.45 am.

Cost: \$8 per class.

Enquiries: Maria—phone 329 4166

Ashhurst Budgeting Service

Thursday 9.30 am—1.00 pm.

Operating from St Mary Magdalene Anglican Church, 67 Cambridge Street, Ashhurst.

For Appointments contact: Manawatu Home Budgeting Service. Phone: 358 2279; Cell: 0800-228 343.

River Church

We meet at 131 Cambridge Avenue each Sunday at 10.00 am. All welcome.

Pastors Dave and Kellie Ross. Phone 027 247 2179 or 328 4864 (evening)

www.riverchurch.nz

Ashhurst Foodbank

Open 2.30 pm—3.30 pm every Thursday. Methodist Church, Bamfield Street, Ashhurst.

Contact: Marianne 027 627 2054

County Fayre Update

let's see if we can help you. Write to us at countyfayre@inspire.net.nz.

We will always need volunteers because that is what County Fayre is about, being part of and giving time to the community, and if that sounds like you, then we would love for you to join us. Make a pot of tea or a plunger of coffee, wash dishes and be sociable is all that's involved, and once a

month is the most asked but whatever you can managed would always be welcome. If you are interested, call in on a Sunday afternoon between 1:00 pm—4:00 pm and chat with the volunteers on that day or send us an email to CountyFayre@inspire.net.nz and we'll make contact with you.

Looking forward to seeing you here.

Jo Morris-Kynoch—President

New Zealand's Native Wasps

Mention wasps and most people think of the large, black and yellow stinging wasps (the German Wasp and the Common Wasp). These introduced species are called social wasps as they live in large colonies. But New Zealand has an estimated 2,000—3,000 species of wasps and many of those are present in and around Ashhurst. The exact number of wasps in New Zealand is unknown because new species are still being discovered.



Most of our wasp species are native and do not live in colonies. They include wood wasps and sawflies, parasitic wasps, as well as stinging wasps. By far the largest number are parasitic wasps but most are not very noticeable due to their small size. Parasitic wasps mostly do not sting but, as



their name suggests, they parasitise other insects by laying their eggs on or inside the eggs, larvae or pupae of the host insects.

The wasp eggs hatch and develop inside the host organism, eventually killing it.

Each wasp species usually attacks just one host species or a small group of closely related species. An example of a large native wasp is the Orange Ichneumonid Wasp (*Netelia ephippiata*) which lays its eggs in the larvae of certain moth caterpillars. This wasp, which has a body length of about 20 mm, is widespread in New Zealand and is often attracted to outside lights at night.

An example of a slightly smaller native wasp is the Black Cockroach-hunter Wasp (*Tachysphex nigerrimus*). This species hunts native cockroaches, which they kill and take back to their burrows to feed their



Photos: Top Left—*Netelia ephippiata*;
Bottom Left—*Trichopria* species;
Top Right—*Baeus* species
Bottom Right—*Tachysphex nigerrimus*;

Continued on next page



Riverside Orchards

For Your Fresh Fruit and Vegetables,
Fresh Baked Bread,
Cheese, Milk, Family Pies

Daily delivery into Ashhurst and Palmerston North
Order online now at www.riversideshop.co.nz

1346 Napier Road (opp Petrol Station) Ashhurst

P: 06 326 8800 F: 06 326 8750. E: sales@riversideshop.co.nz

O'LEARY TREE SERVICES LTD

Craig O'Leary

Dip. Hort/Arb. Certs, Trade Cert. Hort.

30 Years Experience

Tree Removal & Trimming
Pruning, Hedge Trimming

P. 06 326 9688 M. 027 672 7747

New Zealand's Native Wasps

larvae. But most native wasps are much smaller. For example, members of the genus *Trichopria*, which parasitise various fly species, are typically no more than 2 mm in length.

The smallest wasp I have found is a wingless species in the genus *Baeus* which measured only 0.5 mm in length. These

tiny wasps, with their large heads, parasitise spider eggs. Irrespective of their size, however, native parasitic wasps are generally desirable as they help to control populations of native insects.

Grey Smith

Te Ahu a Turanga: Highway Update

The arrival of autumn marks the beginning of the third planting season for Te Ahu a Turanga: Manawatū Tararua Highway.

Over the summer, our landscaping teams focused on maintaining sites planted last season, and preparing new sites for this year.

Between now and October, our landscaping team will plant about 420,000 native plants, 220,000 of which will be planted along the highway alignment.

This is a significant milestone, as previous landscaping seasons have focused on planting at offset sites which are away from the highway.

Now that many earthworks sections are either completed or close to completion, areas next to the highway are ready for planting.

Our teams are busy spreading landscaping mulch onto those areas, readying for our landscapers to go to work.

A reasonable amount of mulch comes from various locations across the site. A recent example of how we utilise materials taken

from the site include a block of pine trees being removed and processed into mulch for use on the project and one of our many examples of our tread lightly value.

While planting is a large part of what our landscaping teams do, they're also responsible for pest control. This is a hugely important part of ensuring our planting sites are successful. Our teams have been busy eradicating nearly 800 pests (mostly rabbits, hares and possums) from the areas we've planted over the last two seasons to make sure they continue to thrive.

Construction update

We reached a huge milestone in April with the completion of Cut 13, the largest cut on the project with a volume of more than 2 million cubic metres of earth. This cut is clearly visible from the Ashhurst end of the site.

This completion marks an impressive achievement by our teams, who are working hard to complete earthworks on the project by October this year.

Continued on next page

Ashhurst Yoga Classes

Gentle beginner to intermediate yoga classes are on every Wednesday during school term time, 9.15 am—10.00 am at the Village Valley Centre.

Cost is \$8.50 and bring your yoga mat.

Working to your own level we focus on mindfulness, building and maintaining strength and flexibility—you don't need to have either to start yoga!

Introducing a new class on the first Wednesday of every month—Chair Yoga, suitable for all levels, especially those with limited lower body mobility or balance, a perfect opportunity to start yoga!

Phone or Text Vanessa: 027 243 0187 or email vlbphotography@inspire.net.nz, or visit www.vlbphotography.co.nz.

Matwork Pilates Sessions

Tuesdays at 6.00pm—55 minutes. Centennial Room at the Village Valley Centre.

Free first session. Bring a mat or \$12 mats available.

"In 10 sessions you will feel the difference, in 20 you will see the difference, and in 30 you will have a new body." Joseph Pilates

To register contact Narrelle 021 2673676

Ashhurst Genealogy

If you require assistance with Ashhurst History or Genealogy research.

Phone Heather Smith on 326 9989 or email whizjoy@inspire.net.nz



Ashhurst's LANDSCAPE SUPPLY YARD

- ✓ Compost
- ✓ Bark Nuggets
- ✓ Basecourse
- ✓ Builders Mix
- ✓ Nova Coil
- ✓ Weedmat
- ✓ Concrete/Mortar/Cement Bags 20kg
- ✓ Mulch
- ✓ Top Soil
- ✓ Washed Stone
- ✓ Sand 3 & 4mm
- ✓ Pea Straw
- ✓ Slimline Water Tanks

Contact: Greg
027 557 8809

Hours: Mon-Fri 7.30am—5.00pm
Sat 9.00am—3.00pm

145 Mulgrave Street, Ashhurst
just along from the PNCC Recycling Centre

HOME DELIVERIES AND BULK DELIVERIES AVAILABLE



Your Ashhurst Property Specialist

If you are thinking about selling call me now so we can talk about your property.



Peter Colville

021 474 557

peter.colville@ljhookerpn.co.nz

Peter Colville -
LJHooker Palmerston North

Ashhurst Clay Target Club (claybird shooting)

Meets the last Sunday of every month from 9.30 am at 651 Valley Road. Anyone welcome to join us
Queries: Ken Simonsen,
Phone: 329-4800

Ashhurst and District Senior Citizens Association Inc

Meet on the first Thursday of each month in the Methodist Church Hall, Bamfield Street, at 2.00pm. We invite you to come along and enjoy an afternoon of friendship and entertainment.

Contact: Terry Carr, 326 8074

Local Justices of the Peace

Mrs AK Rutherford—Available by appointment—027 404 8551

Mr F Saua
Pohangina Road RD 14—029 254 3206

Mr JC Culling
Pohangina Road—329 4825

J Wakeford
Hiwinui—022 319 0434

Ashhurst Music Club

Live original music in your back yard

Our club is open to all ages and skill levels. Monthly meetings are about to start so keep watch on the Facebook page and in the Village Voice.

Contact kiwifieldcrew@inspire.net.nz or phone Grant 027 432 7648

Te Ahu a Turanga: Highway Update

With more than 5.4 million cubic metres moved so far, there is just over 600,000 cubic metres to go.

Much of this will be through Zone 3 at the top of the project, where soggy ground conditions make earthworks more complex.

Elsewhere on the project, beams have started to arrive for the Eco-Viaduct Bridge, with 12 now in place on top of the columns.

More beams will regularly arrive over the next few months from Napier, where they're being made.

At Parahaki Bridge over the Manawātū River, preparations are underway on Pier 1 for the establishment of the form traveller, which will allow the bridge deck to be constructed.

Good progress continues to be made on Pier 2, which is nearing completion, and Pier 3, which is well out of the ground.

Reminder for road users

We have noticed a few members of the public driving into the Parahaki Bridge compound lately. This is the compound located on Napier Road, near the former entrance to the now closed old Manawātū Gorge Road.

While this is located at the end of a public road, this section is a construction zone so please ensure you don't enter without permission.

You can get a great view of the progress on the Parahaki Bridge or the Eco-Viaduct from the temporary Te Āpiti—Manawātū Gorge carpark, which is the last right turn before entering the compound.

For more information about the project, head to or visit the Ashhurst Library or the Visitor's Centre at our Project Office for the latest flyover, project updates and the drive the Highway simulator.

Grant Kauri—Waka Kotahi New Zealand Transport Agency

Ashhurst School

It is hard to believe that we are already one term down in 2023. It has been such a busy term and with what we have planned for the rest of the year, it does not look like slowing down.

In week nine our prefects held their Farmers Day. This was a fun day to show our support and commitment to those in our community who have been impacted by Cyclone Gabrielle. Children and staff came dressed as farmers and the prefects

ran some fun games and activities for the teams including wheelbarrow races and gumboot throwing. There was also a Fashion in the Field competition, there were some amazing outfits! They also provided a free sausage sizzle. It was great to see everyone having so much fun and enjoying the festivities. A big thank you to the prefects, Mrs Ash and those who helped with organising and running this

Continued on next page



... your local fencing contractors ...

Contact us now to talk about your rural & lifestyle fencing requirements

hello.hansenfencing@gmail.com 027 357 3960

FINAL TOUCH

VEHICLE APPEARANCE SPECIALISTS

Paint Repair Technician/Automotive Detailer

Jonathan Holtslag

(06) 888 5043, 64 22 0100 579

Jonathan@finaltouch.co.nz

www.finaltouch.co.nz



Always Looking After the Locals
Village Four Square and Lotto



All You Need!

- ◆ Groceries
- ◆ Fresh Produce /Meat
- ◆ Magazines,
- ◆ DVDs,
- ◆ Beer/Wine,
- ◆ LPG Gas Swap/New Bottles
- ◆ Lotto

Ashhurst Medicine Depot

Hours

Monday—Friday: 7.00am—8.00pm

Saturday: 7.30am—8.00pm

Sunday: 8.00am—8.00pm

Public Holidays: 8.00am—8.00pm

Pravin & Padmini Patel welcome you at

141 Cambridge Avenue, Ashhurst

Phone: 326 8014

THE herb farm | CAFE

New Summer Menu

TRY OUR DELICIOUS SUMMER MENU:
We have added some exciting new dishes! Bring the kids out to explore and enjoy a relaxing lunch, followed by a walk through our themed gardens.



CAFE - GARDENS - SHOP - WORKSHOPS & EVENTS - FUNCTIONS

herbfarm.co.nz

86 GROVE ROAD, ASHHURST

PH 06-326 7479

Ashhurst School

great event.

We recently had the PCT 1 bus tour come to Ashhurst School as part of a programme run by NZEI for teachers starting their careers. It was great to have so many beginning teachers visit our kura and see how we do things at Ashhurst School. It was fantastic and made us proud to hear how incredibly complimentary all of the visitors were about our tamariki. How polite and well mannered they were and how engaged they were in their learning. Thank you to our teachers for hosting these visitors and for passing on your pearls of wisdom.

The trials for the NZAIMS games netball and rippa rugby teams have been held. The children have been notified and training will start soon. A big thank you to Pā Reece and Whaea Katelyn for running the trials and for coaching these teams. Whaea Katelyn will coach the netball team and Whaea Kaz will manage this team. Pā Reece will coach the rippa rugby team and Pā Heath will manage.

Our TECH programme for all of our Year 7/8 children has started so well for our students with about 120 students a year learning about sewing, cooking, biotechnology and woodwork/design. We now have three fully finished spaces.

Ashhurst Library

Hi everyone, can we say a big thank you for the turnout and support for our April holiday programme. It was greatly appreciated, and we were thrilled with the attendance numbers.

Ashhurst Mighty Kids

Ashhurst Mighty Kids is our preschool programme of stories, songs and crafts. As ever, we hope to be able to have special guests throughout the term

Wednesday, 10th May—10.30am

Wednesday, 24th May—10.30am

Wednesday, 7th June—10.30am

Community Garden

We are very proud and very grateful to all the work that goes into our gardens, they are looking fantastic. If ever you would like

A reminder to all of the community that next term we have two teacher only days. On Monday, 24th April we are all attending professional development in Palmerston North learning about the changes in the new curriculum and then on June 2nd we are heading again into Palmerston North to the Kahui Ako symposium that is going to be run by Rangitane Iwi.

Just an update on the current industrial action for teachers. A reminder to all parents that all primary teachers and principals are under the NZEI union. You may hear the term PPTA but this is only for secondary. At this stage there has been no new offer by the government which is extremely disappointing. Beginning teachers are now not even earning the living wage which is so disappointing. This makes our profession not very attractive to people. This does affect all of us, there has been a massive decrease in trained teachers, and this affects the quality of education your children can receive. We continue to require the support of our communities to try to make change. At this stage I am not aware of any further strike days, but I will keep you informed when I know more.

We are all looking forward to Term Two.

Heath Chittenden—Principal

to help, you would be most welcome. Come in anytime and talk to staff and they will put you in touch with our volunteers.

Manawatu Home Budgeting Service

We are thrilled to be in partnership with Manawatu Home Budgeting Service who are conducting budget sessions in our library on Thursday. If you would like to talk to their wonderful staff or need some excellent budgetary advice and guidance, please let us know.

Talk with Mayor Grant Smith

Tuesday, 30th May 5.00 pm—6.00 pm

Come in for an informal chat with our Mayor Grant Smith who will be available to talk to you about any issues and concerns.

Continued on next page

Anglican Parish of Pohangina

St Mary Magdalene's Church, Ashhurst

8.00 am First Sunday of the Month

10.00 am every Sunday

Good Friday service—10.00 am

Friday, 7th April 2023

Easter Sunday service—10.00 am

Sunday, 9th April 2023

St Bartholomew's Church, Komako

10.00 am 2nd, 4th and 5th Sundays.

Easter Sunday service—10.00 am

Sunday, 9th April 2023

Priests—Rev Michael Russell, Rev Pam

Barnett. Contact the Parish office for

further information:

Phone 326 8543 or

Email: info@parishofpohangina.net

www.parishofpohangina.net

St Mary Magdalene Church—Office

Hours (subject to change at short

notice): Monday: closed,

Tuesday: 2.00 pm—5.00 pm

Wednesday: 2.00 pm—4.30 pm

Thursday: 2.00 pm—5.00 pm

Friday: 2.00 pm—5.00 pm

Ashhurst Pohangina Squash Club

Club night is Monday, from 6.00 pm.

Come along and give squash a go! All

members and newcomers welcome.

Courts are located at the rear of the

Village Valley Centre on Guildford

Street

Contact Braydon on 027 390 5611,

ashpohsquashclub@inspire.net.nz, or

find us on Facebook.



Come and see the team at Kauri Physio for all your ACC and non ACC injuries

If you are unsure please email and we will advise whether physio is the right choice for you.

619 Featherstone Street,
Palmerston North
Phone: 06 357 4424
Tamsin.mafi@kaurihealthcare.nz

GRAEME BILSLAND PAINTERS

M: 027 581 2510 P: 06 357 3009 E: bilsland@inspire.net.nz

PO Box 20017, Palmerston North 4448



Kids 'n Motion

Now in its 21st year of providing music and movement for 0—5year olds within Ashhurst and the surrounding community.

Every Friday 9.45 am—11.15 am during school terms at the Village and Valley Centre, Guildford Street, Ashhurst. Cost: Gold coin donation.

Contact: Cherie O'Leary, Ph: 326 9688 Check out our Facebook page and like us! Kids 'n Motion is such a great group to come along too—see you there!

Pohangina Yoga Classes

Mondays 6.00 pm—7.00 pm \$10 per class or \$50 for six classes. Suitable for beginners and those with more experience of yoga.

Contact Catherine: hauorayoga@gmail.com, 021 0270 4400, www.hauorayoga.co.nz, Facebook: Hauora Yoga

Ashhurst Playcentre

Licensed Early Childhood Education Provider. Over 50 years in your community. Spaces now available for children 0—6 years.

Call 326 9270 or email ashhurst@playcentre.org.nz or Drop in for a free visit and a cuppa.

Tuesday and Thursday 9.00 am—1.00 pm. 118 Stanford Street, Ashhurst

Pohangina Local Christian Radio

3ABN Radio is now broadcasting in Pohangina Township on 107.7FM. Offering lifestyle radio with a difference! Broadcast 24 Hours, 7 Days a week for the 'Best News Ever!'

www.3abn.org
Contact Rex 06 356 1141 for Free Bible Studies, Books and DVD's.



HOMESTEAD CATTERY

Skilled and caring local staff with over 14 years experience

31 Pohangina Road, Ashhurst
Viewing by appointment welcome

Ph: (06) 326 8064
www.homesteadcats.co.nz
Find us on fb.com/homesteadcats



Ashhurst Library

Refreshments are provided, you are all most welcome.

The Sharing Shelf

We are very proud with how our community support our sharing shelf through donating produce that is always appreciated by everyone. Can we please just ask that people do not put other items

– clothing, toys etc – onto this shelf, this is for food produce only. Thank you.

Ashhurst Library Facebook

Just a reminder that if you want to keep up to date with all our latest news, events or announcements, just visit us at <https://www.facebook.com/AshhurstLibrary>

Ross Meads—Ashhurst Librarian

Ashhurst Clay Target Club

It was a funny old day in March with only five squads...

One of our members was overheard to say in the clubrooms, "I can honestly report that the shoot today was terrible!" Even one of our regular winners missed his very first shot in a shoot-off and therefore the shoot-off ended right there.

We had a newcomer turn up from Maraekakaho in Hawke's Bay (c'mon look that one up) and he'd travelled down to our club shoot simply because he'd liked what

he kept spotting on our Facebook page and thought he'd come and see for himself.

Pongaroa club members join us regularly and there's talk of some of our club heading there at some stage and join their club shoot.

Club Shoot: Don Buckman

Handicap Shoot: Amanda Hocken

High Gun Shoot: 1st—Seth Quigley
2nd—Joby Stella.

Karen Pawson—Secretary



Photos (Left): Don Buckman; (Right): Seth Quigley

Ashhurst Rainfall

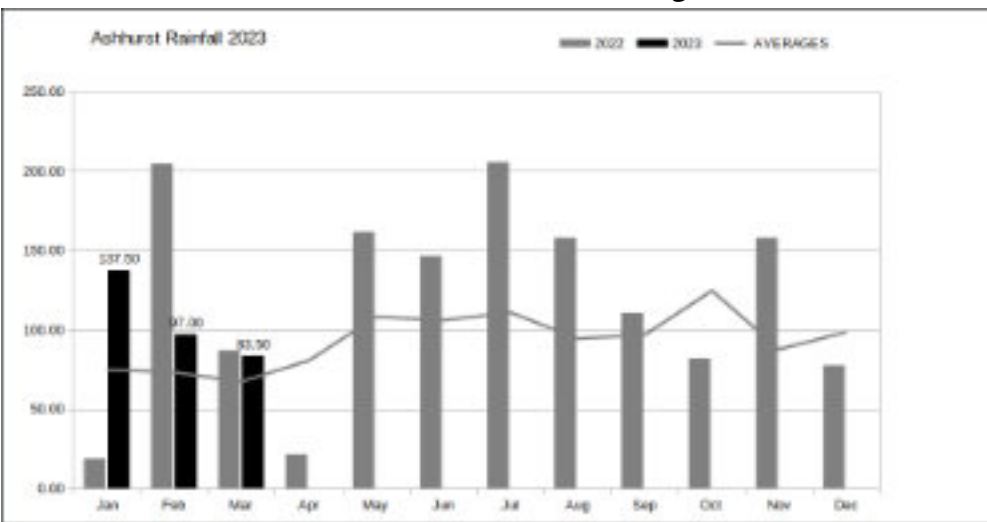
83.5 mm of rain fell in March 2023, above the monthly average of 69.1 mm.

17th of March 2023.

Rain was recorded on 11 days with the highest one-day rainfall of 33 mm on the

The total annual rainfall is 318 mm. This is above the annual average of 217.3 mm.

Mai Quang



Samaritans



24 hours a day



Whether you are lonely, unhappy,
ready to end it all

WE ARE HERE TO LISTEN TO YOU

358 2442 or 0800 72 66 66 | www.samaritans.org.nz

GLIMPSE

Mayor Grant Smith

Kia ora tātou

Thank you to all the Village residents who attended Anzac Day commemorations on the Village Green, and for your Poppy Day contributions.

For its size Ashhurst and its RSA make an 'above and beyond' contribution to this annual respectful and sombre gathering of remembrance.

Deputy Mayor Debi Marshall-Lobb and I thank you for your hospitality during the dawn and the midday civic service.

It was a privilege for both of us to share those commemorations with you.

Annual Budget

Thanks also to those who provided feedback on our proposed changes to the draft Annual Budget, and who turned up at last month's Ashhurst library consultation on Tuesday April 11.

Public submissions closed on April 21, and the three-day in-person hearings stage of the notified budget reset and proposed 6.4 per cent rise in rates, gets underway on May 16.

Council will then spend time considering the submissions and amendments to the budget before formally adopting the new provisions on June 28, and setting the rate for the 2023-24 year.

A reminder that there are details explaining the process on the pncc.govt.nz/annualbudget website, along with the 'Property Search' tool link that will provide an indication of what your new rates might look like.

Library Biz

With no more holiday breaks until Kings Birthday weekend at the beginning of June, the Ashhurst Community Library team can reflect on another successful school holiday programme during April.

Staff were rapt with the response to the well-subscribed events and activities and convey their thanks for the support they received from parents, minders and caregivers.

Next door to the library in the community garden, recently arrived Village residents Hayden and Jo Smith of Trees & Stumps R Us have quickly embraced the Ashhurst community.

They've enhanced the amenity by generously gifting it with a new wooden bench.

Library staff and members of RECAP remind everyone that the garden's Sharing Shelf is for food, produce and gardening items only - not for the disposal of clothing, shoes or other household items.

Garden Allotment

While on the subject of gardens, RECAP is exploring the establishment of a new allotment style community garden in Ashhurst, and would like feedback on the idea.

With high retail prices for fresh vegetables, setting up somewhere for residents to manage and grow their own produce on a larger scale could be a step towards family food resilience.

However, this will take some organising and negotiation, so with spring gardening perhaps in mind, email your thoughts to chris@recap.org.nz

Skytower Skedaddle

Members of the Ashhurst Volunteer Fire Brigade have been seen pounding the pavements in preparation for the Leukaemia and Blood Cancer New Zealand Sky Tower Challenge in Auckland on May 20.

It's a pretty intense vertical climb up Skytower's 51 flights of 1103 steps wearing 25 kilograms of kit.

In the past, the Ashhurst Brigade has been acknowledged at this event for raising the most money based on the number of firefighters in the team.

That gives them a proud target to match, or hopefully, exceed - so please do get in behind their fundraising efforts.

Meet the Mayor

This month's Meet the Mayor will take place on Tuesday, May 30 between 5 - 6pm in the Ashhurst Community Library.

The Council website and Facebook page will post any changes.

Ngā mihi nui

Mayor Grant Smith JP



ASHHURST COMMUNITY LIBRARY

06 326 8646

Open days

Monday	2pm - 5pm
Tuesday - Friday	10am - 5pm
Saturday	10am - 1pm
Sunday	closed

Access the full range of library digital resources at: citylibrary.pncc.govt.nz

SPLASHHURST COMMUNITY POOL

06 350 0849

Normal hours

Tuesday - Friday	6am - 9.30am + 1pm - 7pm during school term
	6am - 7pm during school holidays

Saturday 8am - 6pm

Sunday - Monday closed

Splashhurst! online:
clmz.co.nz/splashhurst

ASHHURST RUBBISH + RECYCLING

Rubbish bag collection Tuesday morning. Bags out by 7.30am.

Recycling Bin	Glass Crate
9 May	16 May
23 May	30 May
6 June	13 June

MULGRAVE ST TRANSFER STATION

Recycling, green waste and general rubbish disposal.

Open Days

Tuesday	1pm - 3pm
Saturday	10am - 4pm



Published by The Ashhurst Village Voice Society Inc.

Contacts

Editor: Llyvonne Barber

Phone: 022 051 6315

ashhurst.voice@gmail.com

PO Box 38, Ashhurst

Advertising: Grey Smith

Phone: 326 8075; 021 175 1726

rgcasmith@inspire.net.nz

Proof-reader: Grey Smith

Letters to the Editor

Letters under 200 words are preferred.

The writer's contact details are required on all letters (not for publication), including address, email and phone number. We may need to contact you to clarify minor details.

The editor reserves the right to edit, abridge or decline letters or articles without explanation. Pen names or letters submitted elsewhere are not acceptable.

If supplying images, high resolution images are required. Please feel free to contact the editor if you are unable to email images.

Advertising Rates & Information

Articles and community notices are free.

Adverts can vary from a few lines in the side column to a double business card size. Conditions apply. A 15% discount is offered if you pay in advance for a full year (11 issues). A business card size advert is to be 60mm by 100mm at 300dpi and costs \$50.

The cost varies proportionally for smaller and larger sized adverts.

For further information on advertising costs and payments please contact Grey Smith.

For technical details please contact the Editor. Contact details above.

Advertisers, we prefer that you supply files in pdf format. Please note that files supplied in .pdf format are unable to be adjusted from our end. Adverts can be created by the Editor for a small additional cost. These can be adjusted as required.

Village Voice Deadline

Deadline for articles and advertising submissions for the next edition is:

5.00pm Saturday, 20th May.

We cannot guarantee your submission will be included after this date.

Ashhurst Bowling Club

It is so hard to believe that another Ashhurst Bowling Club year is done and dusted—why does time fly by so very quickly? Players are still bowling in the Champion of Champion events and the Winter Bowling season is almost here. Some clubs have all weather surfaces and run events pretty much all year around weather dependent of course. So it is not all doom and gloom but if there is a covered all weather bowling green in the future that will be huge for bowlers and should really lift the game's profile. Decisions need to be made and soon would be great!!

Closing Day was really great—a lovely relaxed atmosphere over a stunning lunch prepared by Mike and Lorraine Hale. It was absolutely scrumptious. Then we headed outside to play for the North versus South Shield. Ten ends of triples in what became a very hot afternoon and the final result was North being victorious. The deciding game was won by Adrienne, Jacqui and Bob representing the North. Back inside and Prizegiving underway. The winners of championships received their trophies and also certificates created by Lawrie Jones. The final four awards are for a variety of things but not strictly championships. Outstanding Woman Player went to Margie Rogers, Most Improved New Player to Kynn Harris, Best Club Members to Margaret and Max Grant and The Presidents Trophy to Hugh Davies. President Eddie and our Patron Brian did the presenting. Then it was off to the R.S.A. for a social drink and talk about who got what and things pertaining to bowling. A really great day.

We hosted the Motorhome Tourers and what a hugely successful time this was. They won all the bowling challenges and were treated to a fantastic lunch and dinner organised and prepared by Mike Hale. Some of our club members donated food, their time and energy and everyone involved did all they could to make this memorable and successful. Thank you also to the R.S.A. for the use of their facilities. The weather was kind and everything just appeared to fall into place but behind the scenes there was plenty to do. Huge thanks must go to Mike Hale—his hard work made it a total success.

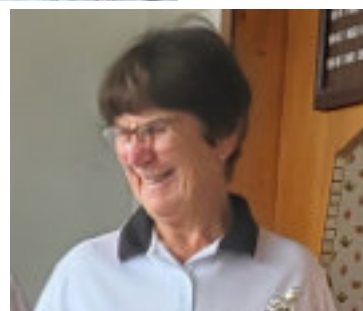
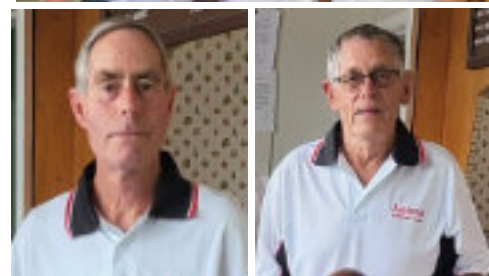
The Cotton Triples was our last open

tournament and a fun, competitive day with great weather and company made it successful. The very popular winners were from Woodville, second was a team from Pahiatua and third was Tony, Donna and Joyce from Ashhurst. A huge thank you to Kylie Cotton for the platters and food organisation. The sponsors, Robert J Cotton Funeral Directors, are thanked again, for their generous ongoing support. Sponsorship makes these events possible.

Next report will be about any successes, great competition etc in the Champion of Champion games as these are still being played.

Until then keep enjoying the good weather and keep safe and well. I commented to a friend that we need some wind so the lawns will dry enough to be mowed. She said there are not many people who ask for the good old Ashhurst wind to blow!! I laughed. Keep happy.

Adrienne Harding—Secretary



Photos (Top—Bottom): Winners of the Cotton Triples; Hugh Davies wins the Presidents Trophy; Kynn Harris wins the Most Improved New Player; Margie Rogers wins the Outstanding Woman Player.