



Ashhurst Village Voice

Informing the communities of Ashhurst & Pohangina

ISSN 2324-5468 (Print)
ISSN 2324-5476 (Online)

June 2025

https://recap.org.nz/village_voice
Established 1997

Community Comment

City Council deliberations on the Annual Plan budget are ongoing. The initial overall increase began at 7.7%, but recent reports had trimmed this back to requiring a 6.6% rise. Reductions in some work programmes has helped as the council tries to limit the effect on ratepayers. There will be some variance for individual properties from the average increase due to a change in the rating formula based on land values, to a mix of land and capital values.

Rumours circulating about funding cuts to community services drew hundreds of people to the rates debate. The public gallery was full and hundreds more joined online to watch the discussion. Of concern was the threat to branch libraries, community grants and community support services. Public opposition seems to have averted this risk for now.

Council work in Ashhurst can be seen in some streets as the trip hazards on footpaths are repaired. A bouquet to the workers who have formed undulating paths to limit damage to roots of trees on the verge. Work in Custom St also appears to have almost finished after a long process.

The new gorge road, Te Ahu a Turanga, is likely to have a soft opening in early to mid-June. There will be no grand opening ceremony, but the detour signs will quietly disappear and traffic will bypass Ashhurst for its more direct route to Woodville and beyond.

The new roundabout at the Ashhurst end (see photo) is almost complete with mulch and new plants being added to soften the edges between road and water runoff control systems. The big work site beside the Parihaki bridge is being transformed into park land and parking for the expected visitors to the temporary named Western Gateway Park.

While this complex renovation work is under way, access to the Gorge walking tracks has been restricted or closed. A new entrance route to these tracks is under construction, which will be safer, but will lose the thrill of a path at the edge of the cliff and navigating tracks under the old new gorge road.

Discussions about the steepness of the new road are true. The stretch of highway up through the cutting opposite Ashhurst has a gradient of 9.5%, which is steeper than that of Transmission Gully. The Woodville side is not quite as steep. Two lanes each way will provide options for slow traffic to let other vehicles glide by. I am sure Ashhurst residents will enjoy the return of relative silence and no vibration as the detoured traffic returns to this new primary highway route.

Harvey Jones



Photo: The roundabout for the new highway. Photo credit: Harvey Jones

Contents

Consultation on the Ashhurst Domain	2
Ashhurst Volunteer Fire Brigade	2
Notice of RECAP A.G.M.	2
Operation Cover-Up	2
Craft on Cambridge	3
Manawatū Rural Support Services Closing	3
Ashhurst Senior Citizens Association	3
Drag Bingo at the R.S.A.	4
Business Focus: The Lash Studio	5
RECAP Update	5
Ashhurst Memorial R.S.A.	6
Book Review: No Words For This	7
Ashhurst School	8
Ashhurst Library	8
Ashhurst Pohangina Pony Club	9
Ashhurst Pohangina Netball Club	10
Ashhurst Bowling Club	10
Palmerston North City Council	11
Ashhurst Clay Target Club	12
Ashhurst Rainfall	12
Village Voice Contacts	12

**Deadline for July
Issue—Friday, 20th
June**

Consultation on the Ashhurst Domain

Thanks again to those who took the time to share your feedback on the draft reserve management plan for Ashhurst Domain earlier this year. We are re-notifying the consultation on the draft plan. Here's why.

To ensure we fully meet the requirements of the Reserves Act 1977, we need to consult on the draft plan for a period of two months. Our earlier consultation period was only one month, and so we have decided to commence a further two-month consultation period, starting today.

As a result, the plan will now be finalised slightly later than originally expected. However, there's no need for you to do anything if you are happy with your original submission. These submissions (from the 3rd February 2025 - 4th March 2025 consultation - including anything shared at the hearing on 26th March) will automatically be included in current consultation and fully considered. If you do have anything new to add, you're more than welcome to make a further submission.

A copy of the draft plan, the same as was published available in February, is available from the Council Customer Service Centre The Square, the Ashhurst Library or from Council website on the submission page here. pncc.govt.nz/ashhurstdomain.

Consultation opens tomorrow until 5.00 pm, Friday, 1st August 2025.

Thanks again for being part of shaping the future of Ashhurst Domain.

Village Voice Funding

The Village Voice has a circulation of 1880 and is delivered free to households in Ashhurst and the Pohangina Valley. The newsletter is run by a small volunteer incorporated society and funded solely by our loyal advertisers. Please support these community-minded businesses. If you wish to support this publication in any way, please refer to the back page and contact Grey Smith.

Ashhurst Volunteer Fire Brigade

If you're anything like me you're super excited about the imminent opening of the new road replacing The Gorge and then The Saddle. It may have already opened by the time you read this!

FENZ has been strategizing on how we will be responding to any motor vehicle crashes (MVC's) on the new road and the Ashhurst Volunteer Fire Brigade would have by now driven the road for a familiarisation as part of that planning.

Since our fire appliance is a "pump" set up for fires and general emergency responses we have no cutting equipment. In the event of a motor vehicle crash our responsibility upon arrival is to:

- a) stabilise (any) patients,

- b) stabilise the vehicle(s), and
- c) prep the scene for the arrival of a "rescue" truck either from Palmy or Woodville.

Once the class 7 truck arrives we help set up cutting equipment and help with extrication. We also manage traffic, provide fire overwatch and set up landing zones for the rescue helicopter.

So, when driving remember correct following distances, drive to the conditions and *555 any stupid driving to Police. If you do come across a motor vehicle crash please be patient and understanding as someone up ahead is probably having the worst day of their life.

Matt Clark—Secretary
Fire Risk Management Officer

Notice of RECAP A.G.M.

Kia ora koutou. You are warmly invited to the RECAP (Society for the Resilience and Engagement of the Community of Ashhurst and Pohangina) annual general meeting on Wednesday, June 11th, 7.00 pm - 9.00 pm at the Village Valley Centre, 21 Guildford street, Ashhurst.

There will be a recap (pun intended)

on our activities over the past year, and we will be electing our board for the year ahead.

A light supper will be provided.

We would appreciate an RSVP for catering purposes.

Ngā mihi maioha.

Chris Love—RECAP coordinator

Operation Cover Up

Once again the Ashhurst ladies have been busy knitting for Ukraine as there is still a great need in Eastern Europe.

The Ashhurst Craft Group meets Mondays, 1.30 pm - 3.30 pm and Wednesdays, 9.30 am - 11.30 am at St Mary Church. A number of ladies from these groups have been knitting blankets, hats, scarves, mittens, slippers and toys.

If you wish to join the Ashhurst Craft Group, please contact Marianne Crawford on 027 627 2054 or just come and join us.

Ruth Beale is part of the Ashhurst Craft Group and also the coordinator for Missions Without Borders - Operation Cover (the knitting side of

the work) for the Manawatū. She wishes to thank all these ladies and other Ashhurst ladies who have contributed to this cause by helping to knit, sew up, collate and bagging up which is a huge job. This year from Manawatū we baled seven bales and



Continued on next page



KITCHENS DESIGNED AND MANUFACTURED

06 326 8849 sales@villajoinery.co.nz
135 Mulgrave Street, Ashhurst, 4810, NZ

villakitchens.co.nz



Practical, friendly and affordable animal care

Phone: 06 326 9257

Mobile: 027 572 9353

Clinic Hours

Monday 8.30am - 5.00pm

Tuesday 8.30am - 5.00pm

Thursday 8.30am - 5.00pm

Saturday 9.00am - 12 noon

141 Cambridge Avenue

Operation Cover Up

will send ten sewing machines and one overlocker.

Donations of wool or knitted garments would be gratefully accepted.

We are still collecting aluminum drink

cans to raise money to buy wool. These can be dropped off at 6 Guildford Street.

Many thanks.
Ruth Beale

Craft on Cambridge

Craft on Cambridge continues meeting in the Eddie Chapman Hall at the Anglican Church and the alterations mean that we can fit more people in than ever!

This term we have changed the hours for Monday afternoons and the start time is now 1.30 pm, so there's no rush to get lunch done, and we finish at 3.30 pm to avoid the end of day school congestion!

You are welcome to come and check us out during the above hours on Monday afternoon or Wednesday morning between 9.30 and 11.30am, during term time. BYO craft and if you would like to learn something new, someone in the group will be able to help.

If you want to know more, contact me on 027 627 2054.

Marianne Crawford

Manawatū Rural Support Services Closing

To our rural community and collaborative partners.

It is with much sadness and regret, that we the Board of Manawatū Rural Support Service Inc have made the very difficult decision to start the wind-up process for Manawatū Rural Support Service after 35 years providing essential social services to a large number of members of Manawatū rural communities.

Key reasons for this decision:

- Significant cuts to our long-term funding
- The funding cuts have severely impacted our ability to provide the comprehensive, all-inclusive social services we have been able to provide in the past
- The uncertainty of future funding make sustainability of our service untenable.

If you have any concerns or would like to discuss this further please contact our Manager, Linda Sievwright 027 293 0566 or email mrssinc@gmail.com.

On behalf of the Rural Community Workers, we feel privileged to have been able to support our rural families enjoying building relationships while visiting your homes, facilitating workshops or supporting community events. Thank you for allowing us to do this. We also appreciate the collaboration we have enjoyed, with individuals and organisations, to support our rural families.

Many thanks.

Manawatū Rural Support Service Board and Rural Community Workers

Ashhurst Senior Citizen's Association

The May meeting of the Ashhurst and Districts Senior Citizens' was hosted by the Ashhurst R.S.A. Women's Group who provided a guest speaker and afternoon tea. Hayden Triggs from Manawatū Rugby was very

interesting to listen to as he related his rugby career to date, including some amusing reflections on his time in Japan!

Our June meeting will be held as
Continued on next page

JustOnePlease

Super kia ora. The Justoneplease item for the Safe House for May 2025 is **Tissues**. Thank you to everyone for the donations so far this year. Kindest regards.

Contact Louise Bowe on 020 410 86128 for more information.

Manawatu Toy Library

200 Church Street, Palmerston North
Hundreds of toys to borrow.

Open 9.30 -12.30 Mon, Thu, Sat.

Visit our website to join, view our toys and learn more.

www.manawatutoylibrary.co.nz

Ashhurst Ladies Coffee Group

10.00 am—11.30 am at The Village Coffee & Co, 62 Cambridge Avenue, Ashhurst. A regular Thursday weekly coffee group, for ladies of all ages in Ashhurst for some social time, a few laughs and new friendships.

WE NEED YOUR HELP!



Calling all residents...

We're on a mission to make our area one of the safest, best prepared and friendliest in New Zealand! Whether you're a new or long-time resident, Palmerston North Neighbourhood Support is here to help you:

- Get to know your neighbours
- Receive emails + alerts that will keep you up-to-date
- Gain tips and resources, including from NZ Police
- Be able to give back or receive support
- And much much more, all for FREE!

To learn more or get involved, visit us online or contact:

Palmerston North Neighbourhood Support

Alison Jarden JP, Manager
06 355 4468 | 021 0248 4139
info@pnccitysupport.com
www.pnccitysupport.com



Creating safe, resilient and connected communities.

herb farm | CAFE

Where tranquility meets family fun!

This summer, unwind at The Herb Farm. Enjoy a relaxing break in our café, then explore the gardens or let the kids have fun in the playground. Whether you're here for a peaceful stroll, something delicious from our café, or a little retail therapy, it's the perfect place to spend quality time with your loved ones and enjoy the beauty of nature.

86 GROVE ROAD, ASHBURST

PH 06-326 7479 | herbfarm.co.nz | @herbfarmcafe



CAFE - GARDENS - SHOP - WORKSHOPS & EVENTS - FUNCTIONS

County Fayre at Pohangina

The creative, social and historical heart of the Pohangina Valley

Open: Sunday 1.00 pm—4.00 pm

except public holiday weekends

Open Weekdays by arrangement

Available for hire for small events

976 Finnis Road, Pohangina

- * Historic Maps and Photographs
- * Roll of Honour
- * Crafts and Produce
- * Devonshire Afternoon Tea/Coffee
- * Scones
- * Muffins
- * Ice Cream Sundaes
- * Milkshakes *

EFTPOS and FREE WIFI now available

Find us on Facebook at <https://www.facebook.com/CountyFayre>

or Email countyfayre@inspire.net.nz

We are a community based project run by volunteers



Awahou Pohangina Playgroup

'A lovely country playgroup' est. 1967.
Meet every Wednesday during term
time 9.30am-12.00pm.

Location: Awahou School Hall, 518
Pohangina East Valley Road.

Drop in for a visit, enjoy a cuppa,
morning tea and chat. Contact: Arna
Taylor—samnarna@outlook.com

Ashhurst Memorial R.S.A. Inc

74 Cambridge Avenue, Ashhurst.
Phone: 326 8296

Monday 3.00 pm-6.00 pm
Tuesday 3.00 pm-7.00 pm
Wednesday 3.00 pm-10.00 pm
Thursday 3.00 pm-9.00 pm
Friday 3.00 pm-11.00 pm
Saturday 2.00 pm-7.00 pm
Sunday 3.00 pm-6.00 pm

Manawatū Rangitikei Methodist Parish—Ashhurst, Bunnythorpe and Pohangina Congregation

Ashhurst Devonport Worship and
Community Centre

10.30 am 1st Sunday each month

Pohangina Community Church

10.30 am 3rd Sunday

Contacts: Parish Office—323 4127
Selina Brightwell—022 184 2337 or
326 8355

Ashhurst Bowling Club

67 Stanford Street.

New bowlers or anyone thinking about
playing please either come along and
have a go or get more info from
Adrianne on 027 2836317.

Ashhurst Senior Citizen's Association

usual on the first Thursday of the
month, (for June, that date is
Thursday, 5th) 2.00 pm, at the Valley
Village Centre. June's meeting will
begin with our AGM and be followed
by a guest speaker and afternoon tea.

The senior citizens' meetings are a
great opportunity to connect with
friends or meet some new people.
Remember that, despite the title, the
Ashhurst and Districts Senior Citizen's
Association is open to people of all
ages - why not come along to a
meeting as a guest and see what you

think? Membership is only \$10 per year
and we ask for a \$2 donation to help
with the cost of afternoon tea. As well
as the afternoon's entertainment and
afternoon tea, raffles are sold and a
sales table could see you pick up a
bargain.

If you are curious but have not
attended due to difficulties with
transport, please contact the
President Trish Beattie on 021 027
73853 and we may be able to organise
a lift for you.

Stephanie Madgewick

Drag Bingo at the R.S.A.

What to do on a Saturday night in
Ashhurst? As something totally
different for our lovely village,
Ashhurst Memorial R.S.A. organised
entertainment of a different sort. Drag
Bingo. Yes, it
was bingo,
yes, there
were prizes,
yes, we had
an absolute
hoot of an
evening.

Over 70
people from
Ashhurst and
the wider
Manawatū
had a
hilarious



evening, playing bingo, laughing, fed
and watered all while being
entertained by [RubyDax](#), a local
entertainer, Drag Queen and MC.
Tickets were in demand and sold out
online quickly, with the limited door
sales eagerly taken. It is wonderful to
see all types of entertainment being
enjoyed by our accepting community.

Gwendi Knight



Continued on next page



B

Talk to the specialist!

Ashhurst's only real estate office,
Next to the lotto 4 square, Cambridge Avenue

Emma Tankersley Residential Sales Consultant
M 027 566 3778 E emma.t@pb.co.nz [f](#) PBAshhurst

Property Brokers Ltd Licensed REAA 2008

Property Brokers^B

pb.co.nz

your local ashhurst electrician

Knowles Electrical

Electrical •
Home Ventilation •
Security •
Heat Pumps •

Michael Knowles
registered electrician
M 022 024 8156
E michael@knowleselectrical.co.nz
W www.knowleselectrical.co.nz

no travel or service charges within the village mon-fri

For all your automotive needs

**VILLAGE VALLEY
AUTOMOTIVE Ltd**



- WOF
- TYRES
- REPAIRS
- BATTERIES
- SERVICING
- TRAILER HIRE
- SPIT ROAST HIRE
- AIR CON SERVICING
- WHEEL ALIGNMENTS

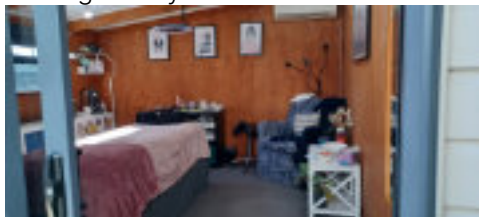
Ph 06 326 8239
www.vva.co.nz

@ office@vva.co.nz 📍 54 Cambridge Ave, Ashhurst

Business Focus: The Lash Studio

Hi everyone, I'd like to introduce myself, I'm Victoria the proud owner of The Lash Studio, Ashhurst. I love providing a space where you can truly come as you are. Whether you're wearing active wear, slippers or your favourite PJ's, there is no pressure to dress up for the occasion. My goal is to create a welcoming, comfortable environment where you feel at ease and leave feeling refreshed and confident.

Work during the day or family commitments? No worries, I have four late nights to choose from, Monday - Thursday plus Saturday appointments, making it easy to fit in a little "me time"



at a time that suits you.

With a full menu of services, a Lash Lift is a client favourite—giving your natural lashes a beautiful curl and lift, a low maintenance treatment for that effortless "made up without the makeup look".

I specialise in lash extensions that are customisable, easy and light to wear, and cured under UV light for longer-lasting results. Whether you love a soft, natural look or something more dramatic, there's a lash style to suit every vibe.

Book now: www.thelashstudio.nz

Find me: 4 Sherwood Grove, Ashhurst. Call/Text: 027 270 4818

Opening Hours:

Monday: 4.00 pm - 9.00 pm
Tuesday - Thursday: 10.00 am - 9.00 pm
Friday: 10.00 am - 4.00 pm
Saturday: 10.00 am - 2.00 pm

RECAP Update

Kia ora koutou from the team at RECAP

New workshop alert!

Orchard Management and Tool Care with Phil Stevens of Slow Farm.

Sunday, 15th June, 10.00 am - 2.30 pm, Ashhurst, Manawatu

\$25 pp or \$35 for two from the same household.

We expect this event will quickly fill up so be sure to register ASAP.

Registrations can be made at recap.org.nz.

Phil will start by discussing ways of managing orchards that don't involve mowing or putting up with rank grass:

- planting guilds (syntropic agroforestry style)
- scything, which he'll demonstrate
- grazing livestock (including birds).

Continued on next page

Steady As You Go

Steady As You Go—A falls prevention programme. One hour of slow purposeful exercises for Seniors, aimed at strengthening weakened leg muscles and helping to improve balance. \$2 per session. Otangaki Lodge, 69 Oxford Street, Ashhurst

Contact Age Concern phone 355 2832 for more details.

A.P.V. PLUMBING LTD

Kenny Allison

Registered Craftsman

Plumber/Gasfitter

- Free Quotes & Consultation
- Plumbing & Gas
- Central Heating Installations
- All Work Guaranteed
- Competitive Rates



Top Notch Chimney Sweeps Manawatu



Don't deny your largest investment the specialist sweep it deserves
Clean from the top and bottom
Fire Bricks and Baffle maintenance available

Ashhurst Based

Bookings and further information— topnotchchimney@xtra.co.nz
Nigel Scrimshaw 027 486 8464 Find us on Facebook

Green Gals Gardening

Your local & reliable gardener



Contact me today
for a free quote

027 882 5567

greengardening@gmail.com

Colyton Road Homekill

Mike

Phone/Text 027 978 1269

- ★ Primary Industries Approved
- ★ Trade Certified Butcher
- ★ All Aspects of Homekill

20 Colyton Road, Feilding



BW BUILDERS
NEW HOMES • RENOVATIONS • ALTERATIONS • DECKS AND FENCES



027 288 6566

Bradwrightbuilders@gmail.com

Ashhurst Plunket

Tuesdays and Wednesdays by appointment only.

Contact www.plunket.org.nz, or 027 276 8145.

B4 School Check

The B4 School Check is the final Well Child check.

Free for all four year old children. It includes a distance vision screening test, audiometry hearing test, height, weight, dental health and child development.

Contact 0800 692 445

Strength and Balance Ashhurst

Move it—or Lose it! Join our friendly group for a gentle, low impact exercise class, (no floor exercises) with an emphasis on fun. Optional—go for coffee afterwards.

Village Valley Centre, Monday mornings, 9.45am-10.45am. Cost: \$10 per class.

Enquiries: Maria—phone 329 4166

Ashhurst Budgeting Service

Thursday 9.30am-1.00pm.

Operating from St Mary Magdalene Anglican Church, 67 Cambridge Street, Ashhurst.

For Appointments contact: Manawatū Home Budgeting Service. Phone: 358 2279; Cell: 0800-228 343.

Meditation Class

Overcoming Stress and Anxiety will be held every Thursday from 10.00 am - 11.00 am followed by morning tea. Suggested donation: \$7. Join us in the lounge of the Village Valley Centre. No special clothing is required. Everyone welcome. For more information, go to www.meditateinpalmerstonnorth.org.

RECAP Update

Then we talk about nutrition. Get an introduction to biochar on a backyard scale, using fruit tree prunings and a simply converted 44-gallon drum. Learn how to make charcoal, simple ways to activate it (turning it into biochar), how to use it when planting and how to add it to existing orchards. Then we discuss liquid fertilisers.

After lunch, we focus on maintaining pruning tools, specifically secateurs and loppers. Bring a pair of either with you and learn about correct use and how to care for them, including how to disinfect and when that's required. We'll get hands-on with seasonal maintenance: Phil will demonstrate how to disassemble, clean and sharpen.

Diamond files will be available for purchase for those who wish to take one home. Order of topics may change depending on weather (we'll be under cover while working on pruning tools).

BYO lunch and appropriate wet weather gear. Tea and coffee

provided.

Winter Pruning Workshop 2025:

Our annual (and popular) Winter Pruning Workshop for 2025 takes place on Saturday, June 21st, 1.00 pm-3.00 pm at the Olsson Community Orchard in Ashhurst. This is a practical, hands on guide to winter fruit tree pruning for optimum next season fruiting and tree health. Join us for this opportunity to get stuck in with the loppers with guidance and support. This is a free workshop, although koha is appreciated. Registrations are essential and can be made at recap.org.nz.

And as always—a huge ngā mihi to all of the regular and casual volunteers who make up RECAP. We are very lucky to enjoy such strong support from our community. If you'd like to get involved we have a variety of volunteering opportunities to suit a variety of people. Contact chris@recap.org.nz to find out more.

Chris Love—RECAP coordinator

Ashhurst Memorial R.S.A.

Kia ora koutou,

As the days grow a little shorter, the heart of the Ashhurst Memorial R.S.A. continues to beat strong, a testament to our vibrant and welcoming community. We've had a busy few weeks, and it's wonderful to see so many of you through our doors, reinforcing our role as a safe and friendly haven for everyone.

Recent Highlights

A truly significant moment for our community was the Dawn Parade on ANZAC Day. The large turnout was incredibly moving and demonstrated the deep respect and ongoing support for those who have served and continue to represent our community and the R.S.A. It was a powerful reminder of the bonds that tie us together.

Our recent Drag Bingo night was an

absolute smash! The laughter and energy in the room were infectious, and it was fantastic to see such a diverse group of people come together for a fun-filled evening.

- Our regular Tuesday night Bingo continues to be a popular fixture, providing a chance to catch up with friends and maybe even win a prize!
- The competitive spirit is alive and well with our ongoing Sports Tipping competitions.
- Our Quiz Nights have been testing your knowledge and sparking lively debates – a fantastic way to engage your brain and enjoy some friendly rivalry. Look out for the next event.

We are thrilled to report that our membership continues to grow, a clear

Continued on next page



Riverside Orchards

**For Your Fresh Fruit and Vegetables,
Fresh Baked Bread,
Cheese, Milk, Family Pies**

Daily delivery into Ashhurst and Palmerston North
Order online now at www.riversideshop.co.nz

1346 Napier Road (opp Petrol Station) Ashhurst
P: 06 326 8800 F: 06 326 8750 E: sales@riversideshop.co.nz

O'LEARY TREE SERVICES LTD

Craig O'Leary

Dip. Hort/Arb. Certs, Trade Cert. Hort.
30 Years Experience

**Tree Removal & Trimming
Pruning, Hedge Trimming**

P. 06 326 9688 M. 027 672 7747

Ashhurst Memorial R.S.A.

indication of the value people find in being part of the Ashhurst Memorial R.S.A. It's your enthusiasm and participation that makes this place so special.

If you haven't joined us on a Friday night lately, you're missing out! The R.S.A. is buzzing with people connecting, sharing stories, and enjoying each other's company. It's the perfect way to unwind at the end of the week and feel the warmth of our community.

Book Review: No Words For This

No words for this by Alison Mau.
A memoir

This is a story about one family in particular, but also about family secrets in general. When, if ever, is it right to confront and talk openly about family secrets?

In Ali Mau's memoir, we discover her views on this and also other family members' views on the subject of when to speak up and to whom.

The author always wanted to be a journalist, like her father, and knew she had the talent as a writer to succeed. It was a desire to please her father that saw her achieve her goals as both a print and TV journalist in her hometown of Melbourne. The blatant sexism and arrogance of her fellow journalists during this time' in the 80's and 90's, is astounding to read about

Stay Connected

Don't miss out on any of the upcoming events and happenings at the Ashhurst Memorial R.S.A! Make sure to join our Facebook page to get the latest news, updates, and reminders.

We look forward to seeing you at the R.S.A. soon!

Ngā mihi nui,

The Team at Ashhurst Memorial R.S.A.

now, in these more (hopefully) more enlightened times.

From Melbourne to London and then Auckland, Ali built herself a great career and became a media darling. She made a big impression with her investigative "MeToo" stories and TV appearances as a reporter and newsreader.

But her home and family life fell apart and, after an unexpected call from her sister, things became unbearable. This was devastating news for all of them. What happens now? Do they speak up, confront and call out the culprit, or keep quiet, say nothing and hope it all goes away in time?

We learn of Ali's courageous decisions, but it's not easy and has many fallouts for all in her family,

Continued on next page

St. Columba's Catholic Church

St. Columba's Catholic Church would like to welcome you to join us for Vigil Mass, celebrated every Saturday at 5.00 pm.

Ashhurst Scouting

Keas (Mon 5.30 pm-6.30 pm),
Cubs (Wed 6.00 pm-7.30 pm) and
Scouts (Mon 6.45 pm-8.15 pm),
during school terms.

Contact Julie (Group Leader) on
ashhurst@group.scouts.nz for more
info.

Ashhurst Indoor Bowling Club

Our weekly Thursday bowling has now started and ends Thursday, 25th September.

We play in the Ashhurst Village Valley Centre with games starting 7.30pm.

Ashhurst Village Radio

Your Community FM Radio Station
Broadcasting 24/7

Community notices are free.

Businesses advertisements 30
second \$5.00

Free training for volunteers joining the
staff.

Contact: 027 7525 0775

ashhurstvillageradio@gmail.com



Ashhurst's LANDSCAPE SUPPLY YARD

- | | | |
|-----------------------|----------------|------------------------------------|
| ✓ Topsoil/Compost Mix | ✓ Bark Nugget | ✓ 5mm Screened Sand |
| ✓ Organic Compost | ✓ Lime | ✓ 20mm Washed Stone |
| ✓ Organic Lawn Mix | ✓ Pea Straw | ✓ Crushed Rotten Rock |
| ✓ Organic Vege Mix | ✓ Pea Metal | ✓ AP20 Top Course |
| ✓ Topsoil (screened) | ✓ Crusher Dust | ✓ AP40 Base Course |
| ✓ Weedmat 1 & 2m | ✓ Builders Mix | ✓ Cement Bags 20kg |
| ✓ Black Mulch | ✓ Nova Coil | ✓ RTU 45 Min Concrete
Bags 20kg |
| | ✓ Mulch | ✓ 20mm White Chip |

Contact: Greg 027 557 8809

greg@manawatucontracting.com

Hours: Mon-Fri 7.30am-5.00pm; Sat: 9.00am-3.00pm; Sun: 9.30am-2.30pm

145 Mulgrave Street, Ashhurst

just along from the PNCC Recycling Centre

HOME DELIVERIES AND BULK DELIVERIES AVAILABLE

Your Local Real Estate Agent



PETER COLVILLE
RESIDENTIAL SALES

021 474 557

peter.colville@uniquerealty.co.nz



/PeterColvilleProfessionals

LICENSED REAA 2008

Ashhurst Playcentre

Licensed Early Childhood Education Provider. Over 50 years in your community. Spaces now available for children 0-6 years.

Call 326 9270 or email ashhurst@playcentre.org.nz or drop in for a free visit and a cuppa.

Monday 10.30 am-2.30pm

Tuesday and Thursday 9.00 am-1.00 pm. 118 Stanford Street, Ashhurst

Ashhurst Clay Target Club (claybird shooting)

Meets the last Sunday of every month from 9.30 am at 651 Valley Road. Anyone welcome to join us
Queries: Ken Simonsen,
Phone: 329-4800

Ashhurst and District Senior Citizens Association Inc

Meet on the first Thursday of each month in the Ashhurst Village Valley Centre, at 2.00 pm. We invite you to come along and enjoy an afternoon of friendship and entertainment.

Contact: Stephanie Madgwick—Secretary 021 025 99382

Local Justices of the Peace

Mrs AK Rutherford—Available by appointment—027 404 8551

Mr F Saua

Pohangina Road RD 14—029 254 3206

Mr JC Culling

Pohangina Road—027 289 5252

J Wakeford

Hiwinui—022 319 0434

Craft on Cambridge

At the Chapman Hall, Anglican Church, Cambridge Avenue, on Monday afternoons 1.30 pm - 3.30 pm and Wednesday mornings 9.30 am-11.30 am. B.Y.O. craft and the cost is \$2 each time.

A friendly, relaxed group who can help with your UFOs!

Contact: Marianne Crawford 027 627 2054

Matwork Pilates Sessions

Tuesdays at 6.00 pm—55 minutes. Centennial Room at the Village Valley Centre.

Free first session. Bring a mat or \$12 mats available.

"In 10 sessions you will feel the difference, in 20 you will see the difference, and in 30 you will have a new body." Joseph Pilates

To register contact Narrelle 021 2673676

Book Review: No Words For This

especially as her parents are now very frail and elderly.

This is a startlingly brave and honest memoir, its not any easy read and I found it very disturbing in parts, but also felt it was an important account of

how people's lives can be torn apart by one person's actions and perhaps other people's lack of action and honesty.

Robyn Dare

Ashhurst School

Welcome to Term 2! We are excited to begin this nine-week term and look forward to all the learning and activities ahead.

ANZAC Day

Some of our Ashhurst School student leaders proudly represented our school at the Ashhurst ANZAC Day Civic Service during the holidays. These students read selected poems as part of the ceremony, demonstrating great respect, confidence, and understanding of the significance of ANZAC Day. We are extremely proud of how well they all did at this significant event. A huge thank you to the whānau who supported and encouraged them on this special occasion. They were outstanding ambassadors for our community.

Teacher's Council Appointment

We are super proud of our principal Heath Chittenden for being appointed to the Teacher's Council of New

Zealand recently. The council members are responsible for ensuring our legislative functions are carried out effectively and efficiently and in the interests of the profession and the public. Pā Heath will be on the council serving a three year term. Seven members are elected by the profession and six members are appointed by the Minister of Education.

Cross Country

We are incredibly proud of all our students for their fantastic efforts in our recent cross country event! From the determined runners at the front to those who pushed themselves to finish with a smile, every student showed resilience, perseverance, and great sportsmanship. It was wonderful to see everyone giving their best and supporting one another. A huge thanks to Pā James for the organisation of this event and to the staff and our community for your support

Ashhurst Library

Hi everyone, would just like to express our gratitude to the New Zealand Transport Agency Waka Kotahi for their donation over the last few years of the driving simulator. It is now heading to their visitor centre and we have greatly enjoyed having it here.

Community Centre Review

The City Council has recently undertaken a full-scale review of all the Community Centres including the Ashhurst Village Valley Centre. Thank you to all the user groups who responded and gave very useful feedback. It has emerged that our

main issue is availability. The centre is very well used with many booking months in advance, so the short-term booking option is not always successful. We will always do our best to accommodate our community, but our advice would be to make a booking well in advance.

Matariki—June 20th

We will be closed 20th June for Matariki so on Thursday 19th we will celebrate with sharing food with friends and whānau - soup and buns are on the menu.

Continued on next page



Always Looking After the Locals
Village Four Square and Lotto

**All You Need!**

- ◆ Groceries
- ◆ Fresh Produce /Meat
- ◆ Magazines,
- ◆ DVDs,
- ◆ Beer/Wine,
- ◆ LPG Gas Swap/New Bottles
- ◆ Lotto

Ashhurst Medicine Depot**Hours**

Monday—Friday: 7.00am—8.00pm

Saturday: 7.30am—8.00pm

Sunday: 8.00am—8.00pm

Public Holidays: 8.00am—8.00pm

Pravin & Padmini Patel welcome you at

141 Cambridge Avenue, Ashhurst

Phone: 326 8014



**The Bottle-O
Ashhurst**

Real Locals, Real Value

Open 7 Days

62 Cambridge Avenue, Ashhurst

06 777 5119

tboashhurst@gmail.com

Like us on Facebook



Ashhurst Library

Digits – IT Help

Just a reminder that if ever you need some help with any IT issues, please get in touch with us. We can submit a help request for you through the Digits programme which provides digital help through their representatives. A big thank you to Tama who gives such great tuition here in Ashhurst.

Ashhurst Crafting Community

Our great friends of the Ashhurst Crafting Community have donated a beautiful blanket that comes with a special pocket buddy to the Ashhurst Library and they wish it to encourage reading through a reading competition from now till the end of June.

If you would like to go into the draw for this amazing blanket, let us know and we will give you a family reading challenge to complete.

Thanks everyone and a huge thank you to our Ashhurst Crafting Community.

Justice of the Peace

Wednesdays—12.00 pm - 1.00 pm

We are very pleased to have Aleisha Rutherford JP here every Wednesday. If you require the services of a JP, come on down. Thanks so much Aleisha.

Moneywise Manawātū

We are thrilled to be in partnership

Ashhurst Pohangina Pony Club

Ashhurst Pohangina Pony Club has been a bit quiet for a while. We have just been super busy but we love having chats with you as you walk through the grounds and enjoy seeing the dogs enjoying the jumps as much as the ponies do.

Ashhurst has really become a bit of a hub of the Manawātū West Coast Pony Club, this season we have hosted lots of events over the past 12 months and we are so lucky to be able to do this.

Recently in the school holidays we had three full days of exams. Riders

with Moneywise Manawatu who are conducting budget sessions in our library on Thursday. If you would like to talk to their wonderful staff or need some excellent budgetary advice and guidance, just let us know or give them a call on freephone 0800 228 343.

Ashhurst Elevenses

Come along every Friday during term time for a cuppa and a friendly chat. Everybody is welcome! There will even be tea, coffee and the odd biscuit provided, but if you want to bring along some home baking, you are very welcome.

Ashhurst Mighty Kids

Ashhurst Mighty Kids is our preschool programme of stories, songs and crafts. We always have a different theme for each session and finish off with some yummy cheese toasts

Wednesday, 11th June 10.30 am

Wednesday, 25th June 10.30 am

Ashhurst Library Facebook

Just a reminder that if you want to keep up to date with all our latest news, events or announcements, just visit us at <https://www.facebook.com/AshhurstLibrary> and click "Like".

Ross Meads—Ashhurst Library

coming from Waikanae and Wanganui and everywhere in between. They had lots of success and we are very proud of them.

This season we have had riders represent us on the National Stage with members Charlotte Sowry and Aggie Shearer in the Manawātū West Coast Show Jumping Team in Foxton and also Isabel Harper and Charlotte Sowry taking the Horse of the Year show jumping title.

Our branch remains the biggest in the Manawātū and we hosted many

Continued on next page

Anglican Parish of Pohangina St Mary Magdalene's Church, Ashhurst

8.00 am First Sunday of the Month
10.00 am every Sunday

St Bartholomew's Church, Komako

10.00 am 2nd, 4th and 5th Sundays.
Priest—Rev Pam Barnett. Contact the Parish office for further information:
Phone 326 8543 or

Email: info@parishofpohangina.net

www.parishofpohangina.net

St Mary Magdalene Church—Office Hours (subject to change at short notice):

Monday and Wednesday: closed,
Tuesday, Thursday, Friday: 9.30 am–12.30 pm

Ashhurst Pohangina Squash Club

Club night is Monday, from 6.00 pm. Come along and give squash a go! All members and newcomers welcome.

Courts are located at the rear of the Village Valley Centre on Guildford Street

Contact Braydon on 027 390 5611, ashpohsquashclub@inspire.net.nz, or find us on Facebook.

Ashhurst Pohangina Lions

The Ashhurst Pohangina Lions meet every second Thursday of the month at the R.S.A. Clubrooms at 6.30 pm. This established and friendly Lions Club is community oriented.

Contacts:

Jack Zwart (President) 326 8958
standishzwart@gmail.com

Brent Besley (Secretary) 329 4891

brent.liz@inspire.net.nz

Mike Forlong (Memberships) 329 4741
forlong@inspire.net.nz

Ashhurst Music Club

Live original music in your back yard

Our club is open to all ages and skill levels. Monthly meetings are about to start so keep watch on the Facebook page and in the Village Voice.

Contact kiwifieldcrew@inspire.net.nz or phone Grant 027 432 7648

Pohangina Rubbish Collection

Rubbish is collected every Monday. Bags out by 7.30am



Come and see the team at Kauri Physio for all your ACC and non ACC injuries

If you are unsure please email and we will advise whether physio is the right choice for you.

KAURI
PHYSIO

619 Featherstone Street,
Palmerston North
Phone: 06 357 4424
Tamsin.mafi@kaurihealthcare.nz

GRAEME BILSLAND PAINTERS

M: 027 581 2510 P: 06 357 3009 E: bilsland@inspire.net.nz

PO Box 20017, Palmerston North 4448



Kids 'n Motion

Now in its 23rd year of providing music and movement for 0 - 5 year olds within Ashhurst and the surrounding community.

Every Friday 9.45 am - 11.15 am during school terms at the Village Valley Centre, Guildford Street, Ashhurst. Cost: Gold coin donation.

Contact: Cherie O'Leary, Ph: 326 9688 Check out our Facebook page and like us! Kids 'n Motion is such a great group to come along to—see you there!

Pohangina Yoga Classes

Sundays 9.30 am

\$10 per class or \$50 for six classes.

Suitable for beginners and those with more experience of yoga.

Contact Catherine: hauorayoga@gmail.com, 021 0270 4400, www.hauorayoga.co.nz, Facebook: Hauora Yoga

Pohangina Local Christian Radio

3ABN Radio is now broadcasting in Pohangina Township on 107.7FM. Offering lifestyle radio with a difference! Broadcast 24 Hours, 7 Days a week for the 'Best News Ever!'

www.3abn.org

Contact Rex 06 356 1141 for Free Bible Studies, Books and DVD's.

River Church

We meet at 131 Cambridge Avenue each Sunday at 10.00am. All welcome.

Pastors Dave and Kellie Ross. Phone 027 247 2179 or 328 4864 (evening)

www.riverchurch.nz

Ashhurst Foodbank

Open 2.30pm-3.30pm every Thursday. Methodist Church, Bamfield Street, Ashhurst.

Contact: Marianne 027 627 2054



HOMESTEAD
CATTERY

*Skilled and caring local staff
with over 14 years experience*

31 Pohangina Road, Ashhurst

Viewing by appointment welcome

Ph: (06) 326 8064

www.homesteadcats.co.nz

Find us on [fb.com/homesteadcats](https://www.facebook.com/homesteadcats)



Ashhurst Pohangina Pony Club

Manawatū Events this year. Ashhurst Pohangina Pony Club has taken the dressage, games, show jumping and gymkhana points trophy.

We hosted our Sports Day on



Waitangi Day. Riders as young as three coming all the way from King Country to enjoy the day. There were 50 riders in the Kindy Ring!

As New Zealand Pony Club

investigates if streamlining across the organisation is required as the new Incorporated Societies Rules evolve, we are extremely proud to say Ashhurst Pohangina is galloping confidently into the future.

Louise Ilton—Head Coach Ashhurst

Ashhurst Pohangina Netball Club

Ashhurst Pohangina Netball Club is making a comeback!

After a couple of year's hiatus, the Ashhurst Pohangina Netball Club has brought people together again by putting in a team for the 2024 and 2025 netball seasons.

The team started their 2024 season grade in Senior Reserves C on grading day and trailblazed through the season, moving up to Senior C (Section A) and becoming overall winners!

This year the ladies have been working hard on their preseason fitness and it has really paid off. The Falcons are heading into the first round in Premier 5 (Section B). This is a huge achievement, not just for the team, but also in terms of exposure for the club and the community. They are the team to watch this season!

This season the club reached out to



a few local businesses including a few in Ashhurst and Pohangina, and were speechless to have 12 sponsors in total providing their support! With the likes of The Local Backyard Cafe and Bakery, The Hair Lab and Co, The Herb Farm, SP Construction, and more, our ladies have enough support to get them through this season with ease! They thank you all very much for your contribution towards the team and the club.

Ashhurst Pohangina Netball thrives to create a warm and welcoming environment, where women as well as their families can connect over their love of netball. They are building back those fundamental structures for a great club so that they can look at bringing back more teams in the future.

So if you love netball and you are looking for a netball club to join next season, where you can have an extended family both on and off the court, then reach out to Ashhurst Pohangina Netball Club on apnc.netballclub@gmail.com. Alternatively you can follow/like them on Facebook at Ashhurst Pohangina Netball Club.

Libby Sayring

Ashhurst Bowling Club

During May all the Champion of Champion events have been played and Ashhurst Club was, as usual, out to be noticed and competitive. I don't think any of the opposing teams thought they were in for an easy time.

The Mens Fours was the team that went all the way to the final of finals and it was such an exciting game to watch. Brian, Moggy, Pete and Tony played Takaro and it was nail biting to the very last bowl when Takaro won 13 to 12. The four men really and truly did Ashhurst proud and brought back the

Runner Up certificate to add to our skite wall. Huge congratulations from everyone.

The new season opens in September so now the work is done on maintenance of the green and even some things in the clubhouse.

Our A.G.M. is to be Sunday, 29th June at 1.00 pm in the clubrooms. Everyone is welcome to come.

Stay well wrapped up for the Winter, keep healthy and happy.

Adrianne Harding—Secretary

Kia ora!

June 2025 will prove to be one of the most significant months in the history of Ashhurst perhaps since it was founded 148 years ago in 1877.

The opening of the Te Ahu a Turanga Manawatū Tararua Highway will have huge long-term implications for the Village and will define its future as a ‘gateway’ to the region. On behalf of the Palmerston North City Council I’m thrilled that its completion will end eight years of heavy traffic through suburban streets, while advancing the city’s status as a transport and logistics hub.

Highway Celebrations

This magnificent piece of highway engineering is our Transmission Gully equivalent and will bring the same level of impact to both sides of the ranges. It officially opened on Saturday June 7, with invited guests and dignitaries assembling at the Village Valley Centre to be bussed onto the site for the official ribbon cutting and a tour of the 11.5-kilometre road. The highway opened for the public on Monday June 9. My congratulations to Grant Kauri and the NZTA team who worked diligently alongside the consortium contractors to ensure the project met local expectations and opened on schedule. .

Highway Challenges

Completion of the project won’t be without its challenges with an expected fall-off in local trading revenue, but the new road will introduce other commercial opportunities. Locals can take heart from the experiences of Waikanae, Cambridge and Taupō where new roads changed transport patterns, with local traders finding ways to attract people off the highways and into their shops and cafes.

I’m confident that the highway itself and the Gateway Park beneath the Parahaki Bridge will become established Ashhurst attractions. Council has allotted \$20,000 in the 2025/26 Annual Budget for work on the Gateway car park.

Whatever decisions are made on the future of the old gorge route, I’m sure there’ll be potential around its walk/ride recreational opportunities.

Annual Budget

Deadlines for this column mean I can’t definitively confirm the final shape of the 2025/26 Annual Budget and rates adopted by council on Wednesday June 4. However, extensive discussions on the draft budget in front of a full public gallery have resulted in a reduction to the proposed rates increase from 7.7% to 6.6%. The draft proposal for the annual general charge will stay at \$300, while the discount for semi-rural properties, will remain the same as for 2024/25.

Be aware that your new rates will be based on updated property values from September 2024 and will include the second step of shifting more of the rates calculation to take in the capital value of your property.

Electoral Boundary Changes

Submission hearings on the proposed national electoral boundary changes that shunt Ashhurst into a new-look Wairarapa electorate take place on June 12. Council has strongly opposed Ashhurst’s Wairarapa exile. Our preference is for the Village to be included within the redefined Palmerston North electorate. Second choice is for Ashhurst to be retained in a geographically smaller Rangitikei. The new electoral boundaries will be announced in August.

Ashhurst Domain

The Ashhurst Domain Reserve Management Plan is to be adopted on June 25. Up for consideration is the fate of the former Jockey Rooms which have fallen into disrepair. Council has fielded approaches from those interested in moving the building offsite for restoration, though a decision on its future is yet to be made.

Sky Tower Challenge

Congratulations to Grant Marshall and his Ashhurst Volunteer Fire Brigade unit who took part in the annual Sky Tower Challenge on May 24 for Leukaemia and Blood Cancer NZ. The three-member team raised \$16,956 with the Eat. Drink. Laugh. comedy show in the Village Valley Centre on Friday May 2 contributing \$5400 towards the total. Council was pleased to support the firefighters with venue hire and a recycling trailer.

Red Cross

My thanks to Ashhurst Community Library staff for hosting a Red Cross staff morning tea to thank the volunteers who’ve had to vacate the shop and leave the Ashhurst community due to the state of the building.

RECAP

A reminder that the 2025 RECAP AGM is on Wednesday June 11 at the Village Valley Centre from 7pm-9pm.

Meet the Mayor

June’s ‘Meet the Mayor’ is set for the last Tuesday of the month, June 24 between 5 – 6pm at the Ashhurst Community Library. This could be subject to change, so please check for any changes on the pncc.govt.nz website and Facebook page.

Ngā mihi nui

Mayor
Grant Smith JP



ASHHURST COMMUNITY LIBRARY

Open days

Monday	2pm - 5pm
Tuesday - Friday	10am - 5pm
Saturday	10am - 1pm
Sunday	Closed

Puanga on Matariki Friday June 20 closed.

Access the full range of library digital resources at: citylibrary.pncc.govt.nz

SPLASHHURST! COMMUNITY POOL

Normal hours

Tuesday - Friday	6am - 9am + 1pm - 7pm during school term 6am - 7pm during school holidays
------------------	---

Saturday 8am - 6pm

Sunday - Monday Closed

clmnz.co.nz/splashhurst

ASHHURST RUBBISH + RECYCLING

Rubbish bag and bin collection
Tuesday morning. Bags out by 7.30am.

Recycling Bin	Glass Crate
3 June	10 June
17 June	24 June
1 July	8 July

MULGRAVE ST TRANSFER STATION

Recycling, green waste and general rubbish disposal.

Open days

Tuesday	1pm - 3pm
Saturday	10am - 4pm

Council’s 24/7 contacts are **06 356 8199**, the **Council Facebook** page, pncc.govt.nz and the **Snap Send Solve** app to quickly report anything that needs attention or fixing.



Published by The Ashhurst Village Voice Society Inc.

Contacts

Editor: Llyvonne Barber

Phone: 022 051 6315

ashhurst.voice@gmail.com

PO Box 38, Ashhurst

Advertising: Grey Smith

Phone: 326 8075; 021 175 1726

rgcsmith@inspire.net.nz

Proof-reader: Vivienne Dalgleish

Letters to the Editor

Letters under 200 words are preferred.

The writer's contact details are required on all letters (not for publication), including address, email and phone number. We may need to contact you to clarify minor details.

The editor reserves the right to edit, abridge or decline letters or articles without explanation. Pen names or letters submitted elsewhere are not acceptable.

If supplying images, high resolution images are required. Please feel free to contact the editor if you are unable to email images.

We do not accept flyers or pamphlets for publication. Contents need to be provided as articles for publication.

Advertising Rates & Information

Articles and community notices are free. Adverts can vary from a few lines in the side column to a double business card size. Conditions apply. A 15% discount is offered if you pay in advance for a full year (11 issues). A business card size advert is to be 60mm by 100mm at 300dpi and costs \$50.

The cost varies proportionally for smaller and larger sized adverts.

For further information on advertising costs and payments please contact Grey Smith.

Advertisers, we prefer that you supply files in pdf format. Please note that files supplied in .pdf format are unable to be adjusted from our end. Adverts can be created by the Editor for a small additional cost. These can be adjusted as required.

Village Voice Deadline

Deadline for articles and advertising submissions for the next edition is:

5.00 pm Friday, 20th June 2025.

We cannot guarantee your submission will be included after this date.

Ashhurst Clay Target Club

Our April shoot was our annual Duckshooters fundraiser and this year there were 150 shooters, perhaps making it the largest shoot in the Lower North Island. Congratulations to John Hillier for being the top shooter of the day and Simo for being our club member with the highest score.

For something this size, setting up takes several days both before and after the event. None of it can happen without our amazing helpers. Even the home baking that was provided, just on its own, was amazing.

Remember back in March? It was an awesome Sunday, in the sunny valley, with a good turnout of March shooters

Photo—Duckshooters 2025 winner

to make up the squads.

Club shoot 25 DTL: Ken Simonsen

Club handicap winner: Marty Boyce

5 stand compak shoot: Ken Simonsen

10 Random Pairs: Alex Hall and Jason Nitschke.

Karen Pawson—Secretary



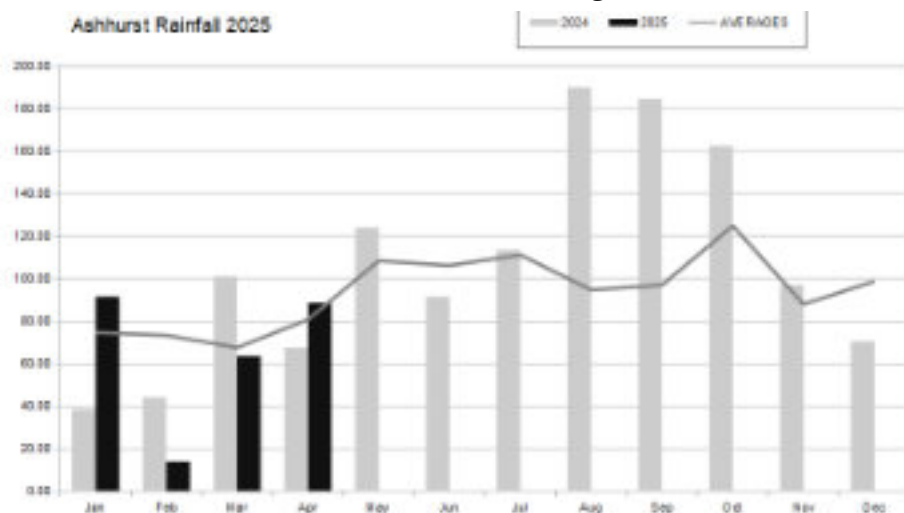
Ashhurst Rainfall

88.5 mm of rain fell in April 2025, above the monthly long-term average of 79.26 mm.

Rain was recorded on 10 days, with the highest one-day rainfall of 24 mm on the 20th of April.

The total annual rainfall for the period from 1st of January to the 30th April is now 257.5 mm, which is below the long-term average for this period of 296.59 mm.

Quang Mai



Samaritans

We are here

24 hours a day

Whether you are lonely, unhappy,
ready to end it all

WE ARE HERE TO LISTEN TO YOU

☎ 358 2442 or 0800 72 66 66 | www.samaritans.org.nz