



# Ashhurst Village Voice

*Informing the communities of  
Ashhurst & Pohangina*

ISSN 2324-5468 (Print)

ISSN 2324-5476 (Online)

**July 2023**

<https://recap.org.nz/village-voice>

Established 1997

## **Te Ahu a Turanga: Highway Update**

Te Ahu a Turanga: Manawatū Tararua Highway's project staff put the engineering skills of Rangatahi throughout the region to the test during a series of STEMM workshops.

The workshops were part of a Wānanga organised by Pūhoro STEMM, an organisation supporting Māori students to develop skills in Science, Technology, Engineering, Mathematics and Mātauranga Māori.

During the workshops—held at Awapuni Function Centre in Palmerston North on 7th June—two groups of Year 13 rangatahi were given a challenge to build a bridge out of basic craft materials.

Five engineers working on the project were on hand to support the students as they figured out how to design a structure that would support a large toy car.

With just ice block sticks, tape, pipe cleaners, pins and paper to work with, the engineers helped the students learn basics principles of bridge building, such as using triangles for strength.

By the end of the sessions, the students were delighted as they all successfully built a bridge able to support the weight of a toy car.

Following the workshop, one student said they learned that in civil engineering “there are different [career] pathways, not just building bridges. I enjoyed building the bridge and working with different students as it brought out confidence amongst us.”

Another student said: “The activity was fun, especially because we won, and it was cool to see what types of mahi [the project engineers] get up to.”

Te Ahu a Turanga: Manawatū Tararua Highway supports Pūhoro STEMM by sponsoring events like this Wānanga, and

also providing internships for rangitahi to gain real world experience on the project.

The work of Pūhoro aligns with the project's principle of Enduring Community Outcomes, creating opportunities that benefit the community long after the project is finished.

### **Construction update**

An exciting new phase of the project has started with pavement construction now underway on the main highway alignment.

Aggregate is being laid and graded in Fill 9, one of the areas of the project where earthworks are completed.

About 450,000 tonnes of aggregate will be used over the next 18 months to build the highway. That's about 16,000 truck loads of material.

We store our aggregate—sourced from local quarries—at a stockpile site located on the project to help minimise traffic disruption on the Saddle Road.

The beginning of pavement construction marks an important turning point in the construction of this key North Island connection.

The transition from earthworks to pavement construction is possible because of the hard work of our earthworks teams. With just 300,000 cubic metres of earth left to be moved – out of a total of 6 million – they are on track to complete bulk earthworks this year.

For more information about the project, head to or visit the Ashhurst Library or the Visitor's Centre at our Project Office for the latest flyover, project updates and the Drive the Highway simulator. .

**Grant Kauri—Owner Interface  
Manager, Waka Kotahi NZ Transport  
Agency**

## **Contents**

<b>Ashhurst Senior Citizen Association</b>	<b>2</b>
<b>Ashhurst Bowling Club A.G.M.</b>	<b>2</b>
<b>Community Comment</b>	<b>2</b>
<b>RECAP Update</b>	<b>2</b>
<b>Ladybirds—Part One</b>	<b>3</b>
<b>Book Review—Birnam Wood</b>	<b>5</b>
<b>Awahou School</b>	<b>6</b>
<b>Ashhurst School</b>	<b>7</b>
<b>Ashhurst Library</b>	<b>8</b>
<b>Ruahine White Water Club Report</b>	<b>10</b>
<b>Ashhurst Rainfall</b>	<b>10</b>
<b>Palmerston North City Council</b>	<b>11</b>
<b>Ashhurst Indoor Bowls</b>	<b>12</b>
<b>Ashhurst Clay Target Club</b>	<b>12</b>
<b>Village Voice Contacts</b>	<b>12</b>

**Deadline for August Issue**

**Thursday, 20<sup>th</sup> July**

## Ashhurst Senior Citizens Association

We have a delightful community spirit here in Ashhurst. There has always been a friendly atmosphere and that is evident today. Having been in the town for close on 58 years we can verify that it has been a wonderful period of residency. We might be considered 'seniors' and fair enough. But in all the time from the Association's commencement, we have enjoyed 49 years of wonderful entertainment. By the way, to be considered 'senior' you don't have to be ancient. Age is no barrier to being part of us. Maybe 'senior' is a slight misnomer. You may be a recent resident and would enjoy an afternoon's fun and camaraderie once a month. Come and enjoy such a time as we did last month at our A.G.M. when Alison Jardin and Phil Robinson gave us the 'lowdown' on neighbourhood support. Phil is the current Ashhurst community policeman and it was great to have the two of them along. If you weren't there you missed a great afternoon.

Why not come each month and enjoy too. When? First Thursday of each month at 2.00 pm in the Methodist Hall in Bamfield Street. Incidentally, on the 6th July we will celebrate our 49th birthday. You'd be most welcome!

**Terry Carr—Secretary**

## Ashhurst Bowling Club A.G.M.

The Ashhurst Bowling Club A.G.M. will be held on Thursday, 13th July at 1.00 pm in the club rooms.

If you have any queries to Adrienne at 027 2836317 or [Ashhurstbowlingclub@gmail.com](mailto:Ashhurstbowlingclub@gmail.com)

All are very welcome.

## Community Comment

The consultation document regarding a proposed change at the Village Valley Centre arrived in our mailbox a few weeks ago. The proposal is to remove the smaller garage building and replace it with a larger building to serve the community as a 'Woodshed'. The old Awahou school house will remain in place. In these gender neutral times, this 'Woodshed' is likely to operate in a similar way to MenzShed facilities elsewhere. Men and women will be able to socialise together and craft wooden creations using cabinet making equipment unlikely to be seen in the standard garden shed.

This proposal has been led by Richard Tankersley and the Ashhurst Community Trust, who hold the current lease of the buildings, with support from the local Lions Club. Months of planning, design and Council engagement have now surfaced for public comment. Once approved, work can commence to move the building onsite, construct storage and parking areas and then consider options for its operation.

Commuters using the Fitzherbert East Road will have spotted new activity as the road crew prepare for work on the roundabout on this side of the Gorge. Access to the site office and Gorge walkway will soon move to the newly sealed service road. This road will eventually provide access to the Western Gateway Park, and walking

access to the Gorge walkway, shared path beside the new road and bridge spanning the river.

Access to the Gorge walkway's car park and reserve has been closed for the past month due to a rahui covering the whole reserve following a sudden death there in late May. A rahui is a restriction or prohibition on an area to give time for the forest or area to heal. This temporary closure is due to be lifted on 22nd June.

Visitors to the Ashhurst Domain, Lincoln Park or McCrae's Bush may have been concerned about the removal of some mature gum and poplar trees from these areas. These trees had reached the end of their useful life and had become a safety concern. The high winds in our area can break off boughs or push over trees weighing tons. All trees are treated as assets and now require Council approval for removal. Residents can rest assured that native trees will not suffer a similar fate unless sick and diseased.

Dog owners may also have noticed new signage in their walking areas classifying the dog on-leash and off-leash exercise areas. Sports grounds, cemetery and lower terrace will generally require greater dog control in order to maintain a healthy environment for people and safety for birdlife.

**Harvey Jones**

## RECAP Update

Kia ora

We'd like to welcome Jo Smith to our board for 2023-2025. Jo volunteers with RECAP Community Kai and she created our beautiful new seed library station.

A reminder that the RECAP Crop Swap is held on the last Saturday of every second month at the Ashhurst library from 11am-1pm. The dates for the remainder of the year are August 26th

*Continued on next page*

## Dave's Plumbing Services Ltd

New Homes, Alterations,  
Cylinder Replacements & Maintenance

**Dave Brown—Licensed Plumber**  
Phone: 027 249 2304



Practical, friendly and affordable animal care

Phone: 06 326 9257

Mobile: 027 572 9353

Clinic Hours

Monday 8.30am - 5.00pm

Tuesday 8.30am - 5.00pm

Thursday 8.30am - 5.00pm

Saturday 9.00am - 12 noon

Wednesday & Friday evenings by appointment

141 Cambridge Avenue

# RECAP Update

and October 28th.

RECAP Community Kai continues to be a no-questions-asked service from the Ashhurst Community Library back room on Tuesdays 3:15pm-4:15pm. As always—ngā mihi nui to Just Zilch, Mission for Men and others in our community for their donations of food and time to run this service.

Our Seed Library is continually updated with seeds appropriate for the season. This is located within the Ashhurst library and residents are free to take three free packets per month.

A big ngā mihi to all the tamariki at Ashhurst School's garden club (and Kate Reweti for joining us). This year we have created a worm farm, planted into the Vegpod that the community won for them, created a beautiful herb garden and the kids have taken home some fresh winter greens to feed their whānau.

It's National Volunteer Week 2023 as I write this update. Volunteers are the backbone of RECAP, and to show what we mean here's some stats for you:

In the 2022-2023 financial year RECAP projects, services and events were made possible by 1265 (documented) volunteer hours from just over 100 people. As we generally rely on people to self report these, we estimate the actual number to be much higher.

How these hours were spent:

- Ashhurst Library Community Garden and King's Reserve: 65 hours
- Olsson Community Orchard: 113 hours
- McCrae's Bush: 290 hours
- Governance/meetings/administration: 218 hours

- Events (workshops e.t.c): 52 hours
- Trapping: 108 hours
- The Seed Library: 20 hours
- RECAP Community Kai: 360.5 hours
- Miscellaneous: 38.5 hours

RECAP would also like to give an extra special thank you to the following extra special people:

- Phil Stevens.
- Sharon Stevens.
- Lance Fitness, Dianne McConnel, Margie Rogers, Peter Todd and Julie Doyle for their tireless work at McCrae's bush.

RECAP Community Kai volunteers: Angela Mills, Gwendi Knight, Helen Williams, Jo Smith, Mackenzie Grant, Dianne Bennett, Kaye Isles, Kim Mills, Karina Jackson, Adrienne Harding, Suzanne and Adelle Ballantyne, Julie Gillam-Hill.

Ian Rasmussen and volunteers for their mahi with the TrAP project.

- Bonnie and Neal Rider
- Hayden Smith

And finally, our volunteer board: Harvey Jones (chairperson) Anne Van-Brunt (secretary) Suzanne Chelius (deputy chairperson) Aaron Roberts, Ellen Wansbrough, Saige Madgwick and Jenna Fisher.

We are so immensely grateful to each and every person who has given their time, energy, expertise and passion to our organisation. Thank you all so much.

Keep an eye on our website and social media as we have some more workshops and seminars planned for spring, as well as an exciting project taking place in the Ashhurst Health Centre garden area.

Look after yourselves and others.

**Chris Love**  
[www.recap.org.nz](http://www.recap.org.nz)

## Ladybirds—Part One

Most Kiwis will be familiar with Ladybirds and will probably have seen at least a couple of different species in their garden. The name Ladybird

originated in Britain where the insects were initially known as "Our Lady's Birds", but in North America they are commonly

*Continued on next page*

**Firewood For Sale**  
Poplar or Pine available  
Phone Ken Pratt 027 498 3718

**JustOne Please**  
Super Kia ora, the item for the Women's Refuge Safe House for the month of July is PEGS.  
Thank you once again for the kindness of everyone for the donations for June.  
You can drop these off at the Ashhurst Library. Contact Louise Bowe on 020 410 86128 for more information.

**WE NEED YOUR HELP!**



Calling all residents...

We're on a mission to make our area one of the safest, best prepared and friendliest in New Zealand! Whether you're a new or long-time resident, Palmerston North Neighbourhood Support is here to help you:

- Get to know your neighbours
- Receive emails + alerts that will keep you up-to-date
- Gain tips and resources, including from NZ Police
- Be able to give back or receive support
- And much much more, all for FREE!

To learn more or get involved, visit us online or contact:

**Palmerston North Neighbourhood Support**  
Alison Jarden JP, Manager  
06 355 4468 | 021 0248 4139  
[info@pnctysupport.com](mailto:info@pnctysupport.com)  
[www.pnctysupport.com](http://www.pnctysupport.com)



Creating safe, resilient and connected communities.

**VILLA JOINERY**  
Quality Kitchens  
Designed & Manufactured  
135 Mulgrave Street, Ashhurst, Palmerston North  
P: 06 326 8849 F: 06 326 9745  
E: [sales@villajoinery.co.nz](mailto:sales@villajoinery.co.nz)

**KAHUEV Casual Job Vacancy**

Two casual job vacancies available at local Ashhurst electric vehicle manufacturer KAHU EV

Casual roles available are: Cleaning  
Data Entry

Hours will vary, probably in the range of 5—10 hours/week.

Please apply by email with your CV and cover letter to [office@kahuev.com](mailto:office@kahuev.com)

**Awahou Pohangina Playgroup**

'A lovely country playgroup' est. 1967.  
Meet every Wednesday during term  
time 9.30 am—12.00 pm.

Location: Awahou School Hall, 518  
Pohangina East Valley Road.

Drop in for a visit, enjoy a cuppa,  
morning tea and chat. Contact: Arna  
Taylor—[samnarna@outlook.com](mailto:samnarna@outlook.com)

**Ashhurst Memorial R.S.A. Inc**

74 Cambridge Avenue, Ashhurst.  
Phone: 326 8296

**Summer Hours**

Sunday: 2.00 pm—6.00 pm

Monday 3.00 pm—6.00 pm

Tuesday: 3.00 pm—7.00 pm

Wednesday 3.00 pm—9.00 pm

Thursday: 2.00 pm—9.00 pm

Friday: 2.00 pm—11.59 pm

Saturday: 1.00 pm—9.00 pm

**Manawatu Rangitikei Methodist Parish—Ashhurst, Bunnythorpe and Pohangina Congregation**

Ashhurst Devonport Worship and  
Community Centre

10.00 am 1st and 2nd Sundays

Pohangina Community Church

10.30 am 3rd Sunday

Contacts: Parish Office—323 4127

Heather Fairless—326 8355

**Ashhurst Bowling Club**

67 Stanford Street.

Season starts end of September  
through to mid April.

If you would like more information on  
lawn bowling, please call or email:  
Adrienne Harding 326 8972/027 283

6317 [ashhurstbowlingclub@gmail.com](mailto:ashhurstbowlingclub@gmail.com)

**Pohangina Rubbish Collection**

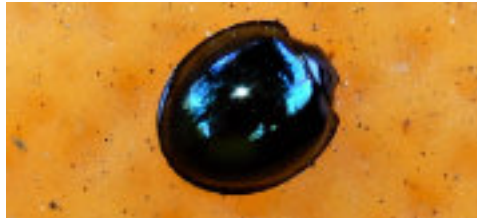
Rubbish is collected every Monday.

Bags out by 7.30am.

**Ladybirds—Part One**

called Ladybugs. Ladybird (or Ladybird  
Beetle) is preferred, however, because  
they are beetles, not true bugs.

I suspect most of us imagine there are  
only three or four species of ladybird in  
New Zealand, but there are actually  
more than 20. Unfortunately, most of  
them are not native, some having been  
introduced accidentally, while others  
have been intentionally introduced as  
biological control agents. This is  
because ladybirds often feed on pest  
species like aphids, mealybugs, scale



insects, mites and the like.

In this article I thought I would discuss  
some of our larger ladybird species. One  
of the most recent arrivals to our  
country, and one of the larger species  
(up to 8 mm long), is the Harlequin  
Ladybird from Asia. Highly variable in  
colour and the number of spots it has,  
this species was first found in Auckland  
in 2016. It is now widespread and can

*Photos: Above—Steelblue Ladybird (Halmus  
chalybeus)*

*Top Right—Harlequin Ladybird (Harmonia  
axyridis);*

*Bottom Right—Eleven-spotted Ladybird  
(Coccinella undecimpunctata).*

readily be found during summer close to  
willow trees. This is because it feeds on  
the giant willow aphid, which is  
obviously a good thing. But, as has  
occurred elsewhere in the world, it is



likely competing with, and displacing,  
other useful ladybird species.

Ladybirds that we typically see in our  
gardens and parks include a couple of  
introduced species around 4—5 mm in  
length: the Eleven-spotted Ladybird  
(orange with 11 black spots), which  
mainly feeds on aphids, and the  
Steelblue Ladybird (shiny steel blue in  
colour), which mainly feeds on scale  
insects. If you are lucky, you might see  
an introduced Two-spotted Ladybird  
(orange with two black spots), or



*Continued on next page*



**B**

**Talk to the specialist!**

Ashhurst's only real estate office,  
Next to the lotto 4 square, Cambridge Avenue

**Emma Tankersley** Residential Sales Consultant  
M 027 566 3778 E [emma.t@pb.co.nz](mailto:emma.t@pb.co.nz) **f** PBAshhurst

Property Brokers Ltd Licensed REAA 2008

**Property Brokers<sup>B</sup>**

[pb.co.nz](http://pb.co.nz)

your local ashurst electrician

**Knowles Electrical**

Electrical •  
Home Ventilation •  
Security •  
Heat Pumps •

Michael Knowles  
registered electrician

M 022 024 8156

E [michael@knowleselectrical.co.nz](mailto:michael@knowleselectrical.co.nz)

W [www.knowleselectrical.co.nz](http://www.knowleselectrical.co.nz)

no travel or service charges within the village mon-fri

For all your automotive needs

**VILLAGE VALLEY  
AUTOMOTIVE Ltd**



- WOF
- TYRES
- REPAIRS
- BATTERIES
- SERVICING
- TRAILER HIRE
- SPIT ROAST HIRE
- AIR CON SERVICING
- WHEEL ALIGNMENTS

**Ph 06 326 8239**  
**www.vva.co.nz**

@ [office@vva.co.nz](mailto:office@vva.co.nz)

📍 54 Cambridge Ave, Ashhurst

# Ladybirds—Part One

possibly even a native Orange-Spotted Ladybird (black with 16 orange spots), both of which are mainly aphid-eaters. Although I have never found an adult

Orange-Spotted Ladybird, I did find a larva on a thistle plant near Ashhurst on one occasion.

Grey Smith

## Book Review: Birnam Wood

*Birnam Wood* by Eleanor Catton

Have you read “*The Luminaries*” yet? I’ve heard many people say they haven’t, but feel they should as it is has been considered a New Zealand classic and is a Booker Prize winner.

Eleanor Catton has just published her new novel. Its hard to categorize this one —part thriller, part fable/ideological/ environmental story — probably all three.

Birnam Wood is the name of a gardening collective set up by a group of idealistic young people who believe in saving the earth and living sustainably. They move on to a large farm in the South Island (a fictional Thorndike). A landslide has closed the town off, leaving a large farm abandoned, enabling the illegal gardeners to start planting crops. They believe they are doing so with good intentions as a non-profit making collective with high ideals.

The farm was going well until the appearance of American billionaire Robert Lemoine who has a very different agenda for the abandoned farm, which he wants to buy. At first, his ideas seem sound and plausible but are they really? What is behind his

obsession with this particular land and what is really going on here, is the question being asked by Mira, head of the collective.

Shelley and Mira are the main driving forces behind the group of gardeners, but even they have their differences in the general running of the group which slowly move onto the land itself and set up a small village to live in.

The reader is curious to know more about the main characters. In this novel, there is a lot of dialogue in their discussions at regular meetings, which is fascinating to read, but sometimes a little long and drawn out. Many arguments are made on the morality of what they are doing (illegally) and whether the good justifies receiving dubious financial support from someone who does not share their values.

In many ways, this is a modern morality tale, weighing up many different views on capitalism and when it is acceptable to modify your beliefs in order to achieve success, The ending is both powerful and unexpected. Even if you didn’t enjoy *The Luminaries*, you may like this.

Robyn Dare

### Steady As You Go

Steady As You Go—A falls prevention programme. One hour of slow purposeful exercises for Seniors. Aimed at strengthening weakened leg muscles and helping to improve balance. \$2 per session. Otangaki Lodge, 69 Oxford Street, Ashhurst

Contact Age Concern phone 355 2832 for more details.

## A.P.V. PLUMBING LTD

Kenny Allison

Registered Craftsman

Plumber/Gasfitter

- ☑ Free Quotes & Consultation
- ☑ Solar Installations
- ☑ Roofing
- ☑ Central Heating Installations
- ☑ All Work Guaranteed
- ☑ Competitive Rates

22 Mulgrave Street  
Ashhurst

M: 027 241 3457

A/H: 326 9346

E: apvplumbing@xtra.co.nz

!!! NO JOB TOO BIG OR TOO SMALL !!!



# TIME TO GET SOLD

*Susan*  
**WOOLNOUGH**

**“I believe in outstanding service and professionalism. I expect this service when I sell my own home, and I guarantee to give it to you, when I sell yours”.**

**Born and Bred in the Manawātū**, with over **28 years real estate experience**, I’m here to help you get the **best result** for your real estate journey. I’m an Associate Member of the Real Estate Institute of New Zealand, previously managed an **award winning** office and owned offices in Palmerston North and Auckland.

**For all your real estate needs, call me on 0800 GET SOLD**

**Susan Woolnough** AREINZ Sales Consultant

M 021 481 855 | @f getsoldwithsusan | E susan.woolnough@harcourts.co.nz

**Harcourts** Team Manawatu

Team Manawatu Realty Ltd Licensed REAA 2008

## Top Notch Heat Pump Cleaning



### Residential Heat Pumps

Regular Maintenance will keep your heat pump from using excessive electricity. Annual filter and coil cleaning will get your unit back to its’ most efficient production of heating and cooling for your home. Avoid allergens and mould build up.

Find us on Facebook

Bookings and Further information 027 44 777 95

THE LASH STUDIO

For All Things Lashes and Brows



@thelashstudio.ashurst

Victoria

027 270 4818

thelashstudio@xtra.co.nz

Monday - Thursday 6pm - 9pm

Saturday 9am - 5pm

- |                      |                 |
|----------------------|-----------------|
| Lash Extensions      | Brow Lamination |
| - Classic Extensions | Henna Brow      |
| - Hybrid Extensions  | Brow Tint       |
| Lash Lift            | Brow Shape      |
| Lash Tint            |                 |

\*Bookings can be done via my Facebook Page

**Ashhurst Plunket**

Every Monday and Tuesday.

Providing family health and wellbeing; child growth and development checks.

For more information call Plunket Area Office—0800 692 445 or 06 357 4844

**B4 School Check**

The B4 School Check is the final Well Child check.

Free for all four year old children. It includes a distance vision screening test, audiometry hearing test, height, weight, dental health and child development.

Contact 0800 692 445

**Strength and Balance Ashhurst**

Move it—or Lose it! Join our friendly group for a gentle, low impact exercise class, (no floor exercises) with an emphasis on fun. Optional—go for coffee afterwards.

Village Valley Centre, Monday mornings, 9.45 am—10.45 am.

Cost: \$8 per class.

Enquiries: Maria—phone 329 4166

**Ashhurst Budgeting Service**

Thursday 9.30 am—1.00 pm.

Operating from St Mary Magdalene Anglican Church, 67 Cambridge Street, Ashhurst.

For Appointments contact: Manawatu Home Budgeting Service. Phone: 358 2279; Cell: 0800-228 343.

**River Church**

We meet at 131 Cambridge Avenue each Sunday at 10.00 am. All welcome.

Pastors Dave and Kellie Ross. Phone 027 247 2179 or 328 4864 (evening)

[www.riverchurch.nz](http://www.riverchurch.nz)

**Ashhurst Foodbank**

Open 2.30 pm—3.30 pm every Thursday. Methodist Church, Bamfield Street, Ashhurst.

Contact: Marianne 027 627 2054

**Ashhurst Red Cross**

Secondhand Shop, Cambridge Avenue.

Winter clothing in store, books, puzzles and household items galore.

Monday—Thursday 12.30 am—2.30 pm  
Friday 10.00am—1.00pm or when the flags are out.

Donations only accepted when the shop is open.

# Awahou School

Kia ora from Awahou School!

**Learning Focus:**

We have had a great time this term exploring our world and our solar system! We started our learning journey by exploring our local area, with a visit to some historical sites. Our first visit was to County Fayre, where we were treated to some lovely scones with jam and cream while we explored all the history of the area. We then headed to the Pohangina Cemetery to explore more local history and we were scheduled to head up to Te Apiti-Manawatu Gorge, but unfortunately the weather wasn't too kind to us that day. After this trip we moved our learning out further to explore Manawatu, where we are in Aotearoa-New Zealand, some significant landmarks etc. Once that was complete we looked into the continents of the world, before heading off into space to explore our solar system. The students have done a great job learning all about the sun, planets and moons we have in the Milky Way. We even got a chance to head to Wellington to visit Carter's Observatory—Space Place where we experienced our solar system and learned more about Matariki in the Star Dome! It was an amazing experience for all!

**Sports**

Term 2 is the time of our annual Cross-country running events. The students trained hard with persistence and resilience. We held our own school event and then those keen runners



participated in the Kainui Schools' Group Cross-Country running competition. All students participating did their very best and most placed in the top 10! Ka rawe team Awahou! Then it was on to Hockey. We are lucky to have Hockey Manawatu come out each year to run hockey sessions with all our students. It is great to watch their skills and coordination develop. The Junior Tough Guy and Gal was held on Tuesday 30th May where a bunch of Awahou students proved how tough they are! They got wet and muddy, but had a blast!

**Achievements**

This term we were pleased to appoint two new Senior Leaders to the team. Congratulations Mary Hawkins and Pippa-Jane Rowe! You are both wonderful role-models and will be great leaders!

**Upcoming**

At the end of this term we have our highly anticipated school DISCO coming up on Wednesday, 28th June. So we will be practising our dancing for the rest of the term. We also hold our annual mid-year Learning Chats in the last week of term, so we can share with parents the wonderful learning progress and achievement their children have made so far this year. Term 3 begins on Monday, 17th July, and we've got another action packed term planned.

Ngā mihi nui,

**Trudi Blinkhorne—Principal**



## Riverside Orchards

**For Your Fresh Fruit and Vegetables,  
Fresh Baked Bread,  
Cheese, Milk, Family Pies**

Daily delivery into Ashhurst and Palmerston North  
Order online now at [www.riversideshop.co.nz](http://www.riversideshop.co.nz)

1346 Napier Road (opp Petrol Station) Ashhurst  
P: 06 326 8800 F: 06 326 8750. E: [sales@riversideshop.co.nz](mailto:sales@riversideshop.co.nz)

## O'LEARY TREE SERVICES LTD

### Craig O'Leary

Dip. Hort/Arb. Certs, Trade Cert. Hort.  
30 Years Experience

**Tree Removal & Trimming  
Pruning, Hedge Trimming**

P. 06 326 9688 M. 027 672 7747

# Ashhurst School

## Cross Country

We would like to congratulate all of our students on their amazing effort in cross country recently. The turnout of students was the best we've had in many many years and the effort they put in was outstanding. We were really lucky to have such a fabulous day to run the cross country and are appreciative of the domain as it is such a good venue for this event to be run at and sits on our doorstep. It was fabulous to see so many whānau out supporting our tamariki and we really appreciate those that stepped in and assisted on the course.

## Inter School Cross Country

This event brought together the top runners from primary and intermediate schools from across the Manawatu. There were fields of up to 122 students. Making it to this event is a fantastic achievement and a number of children finished in the top half of their event. We also had a number of children finish in the top 5 of their event. The overall team effort meant that we had some great results.

- Year 7 Girls: Molly 3rd
- Year 5 Girls: Kiana 5th
- Year 5 Boys: Fletcher 4th
- Year 6 Boys: Madden 4th

Unfortunately we do not have all of the individual results.

## Team Results

- Year 5—6 Overall 4th (44 schools)
- Year 5 Girls: 2nd
- Year 5 Boys: 8th
- Year 6 Girls: 9th
- Year 6 Boys: 9th
- Year 7—8 Overall 3rd (22 schools)
- Year 7 Girls: 3rd
- Year 7 Boys: 5th
- Year 8 Girls: 4th
- Year 8 Boys: 5th

## Celebrating Success

Congratulations to the following students, past or present, for their selection into the Netball Manawātū Rep teams for 2023. We wish you luck in your upcoming campaigns.

- Under 16 White—Emma Taylor (P)
- Under 14 Green—Ana-Louise Reuben-Peina (P)
- Under 14 White—Jessica Port, Atawhai Wairau, Brooke Day (P)
- Under 14 Black—Tara Kirk (P)  
(P) past student

## Industrial Action

As many of you will be aware, the Primary Teachers Collective has finally been settled. This means that there will be no more strike action for primary teachers. Secondary teachers will continue with their action and strikes. The primary principals have not settled either. This may mean we continue our industrial action against

*Continued on next page*

## 261 Fearless Club NZ—Ashhurst

Women's only running group. Non-competitive, non-judgemental, no woman is left behind!

Every Monday during term time, 6.00 pm—7.00 pm  
Meet at the Ashhurst Squash Club

Email: [261clubnzashhurst@gmail.com](mailto:261clubnzashhurst@gmail.com) or phone Sarah on 027 460 6729

## Ashhurst Yoga Classes

Gentle beginner to intermediate yoga classes are on every Wednesday during school term time, 9.15 am—10.00 am at the Village Valley Centre.

Cost is \$8.50 and bring your yoga mat.

Working to your own level we focus on mindfulness, building and maintaining strength and flexibility—you don't need to have either to start yoga!

Introducing a new class on the first Wednesday of every month—Chair Yoga, suitable for all levels, especially those with limited lower body mobility or balance, a perfect opportunity to start yoga!

Phone or Text Vanessa: 027 243 0187 or email [vlbphotography@inspire.net.nz](mailto:vlbphotography@inspire.net.nz), or visit [www.vlbphotography.co.nz](http://www.vlbphotography.co.nz).

## Matwork Pilates Sessions

Tuesdays at 6.00pm—55 minutes. Centennial Room at the Village Valley Centre.

Free first session. Bring a mat or \$12 mats available.

"In 10 sessions you will feel the difference, in 20 you will see the difference, and in 30 you will have a new body." Joseph Pilates

To register contact Narrelle 021 2673676



## Ashhurst's LANDSCAPE SUPPLY YARD

- ✓ Compost
- ✓ Bark Nuggets
- ✓ Basecourse
- ✓ Builders Mix
- ✓ Nova Coil
- ✓ Weedmat
- ✓ Concrete/Mortar/Cement Bags 20kg
- ✓ Mulch
- ✓ Top Soil
- ✓ Washed Stone
- ✓ Sand 3 & 4mm
- ✓ Pea Straw
- ✓ Slimline Water Tanks

Contact: Greg  
027 557 8809

[greg@manawatucontracting.com](mailto:greg@manawatucontracting.com)

145 Mulgrave Street, Ashhurst  
just along from the PNCC Recycling Centre

HOME DELIVERIES AND BULK DELIVERIES AVAILABLE



## Your Ashhurst Property Specialist

*If you are thinking about selling  
call me now so we can talk about  
your property.*



**Peter Colville**

021 474 557

[peter.colville@ljhookerpn.co.nz](mailto:peter.colville@ljhookerpn.co.nz)

Peter Colville -  
LJHooker Palmerston North

### Ashhurst Clay Target Club (claybird shooting)

Meets the last Sunday of every month from 9.30 am at 651 Valley Road. Anyone welcome to join us  
Queries: Ken Simonsen,  
Phone: 329-4800

### Ashhurst and District Senior Citizens Association Inc

Meet on the first Thursday of each month in the Methodist Church Hall, Bamfield Street, at 2.00pm. We invite you to come along and enjoy an afternoon of friendship and entertainment.

Contact: Terry Carr, 326 8074

### Local Justices of the Peace

Mrs AK Rutherford—Available by appointment—027 404 8551

Mr F Saua  
Pohangina Road RD 14—029 254 3206

Mr JC Culling  
Pohangina Road—329 4825

J Wakeford  
Hiwinui—022 319 0434

### Ashhurst Music Club

Live original music in your back yard  
Our club is open to all ages and skill levels. Monthly meetings are about to start so keep watch on the Facebook page and in the Village Voice.

Contact [kiwifieldcrew@inspire.net.nz](mailto:kiwifieldcrew@inspire.net.nz) or phone Grant 027 432 7648

## Ashhurst School

the Ministry of Education also. There is nothing the Ministry has provided in the collective agreements that are going to assist schools and your child's learning. I continue to share with you we are in a teaching crisis with such limited numbers of teachers training and so many people leaving the profession. In areas, such as learning support and assistance with children with behaviour needs, we continue to face cuts in the system and a lack of resourcing and support to help improve outcomes.

### Sports

We have had a bit happening on the

## Ashhurst Library

Hi everyone, we have a busy month coming up with the school holiday programme as well as some more community profiles. Can we say a big thank you to everyone for their wonderful feedback of Billie's profile, it was a privilege to be able to share that with you all.

### Christmas Parade and Market Committee

Our current Christmas Parade and Market committee have stepped down and we need a new group to take over. It is a very rewarding experience mixed with required organisational skills. Please let us know if you would like to be involved, thank you.

sports fields over the past few weeks, and it is not slowing down. We hosted Whakarongo school A.I.M.s games netball recently. We also wish that team all the best for the Dannevirke tournament. Our A.I.M.s ripper team recently played at P.N.I.N.S.; we expect more inter-school exchanges. We also look forward to our Year 5/6 and 7/8 Ki o rahi teams heading into Palmerston North to compete. This is an exhilarating Maori game, and we have been very fortunate to have Chris from Rangitane come out and work with our students.

**Heath Chittenden—Principal**

### Ashhurst Mighty Kids

Ashhurst Mighty Kids is our preschool programme of stories, songs and crafts. As ever, we hope to be able to have special guests throughout the term

Wednesday, 19th July—10.30 am  
Wednesday, 2nd August—10.30am

### July Holiday Programme

**Erin Wilson—Monarchs in Winter Monday, 3rd July—10.30am**

Author Erin Willson will talk about monarch butterflies, their activities in winter and have a butterfly craft ready to go.

**Andrew Wilson—Master Magician**

*Continued on next page*



... your local fencing contractors ...

Contact us now to talk about your rural & lifestyle fencing requirements

[hello.hansenfencing@gmail.com](mailto:hello.hansenfencing@gmail.com) 027 357 3960



VEHICLE APPEARANCE SPECIALISTS

Paint Repair Technician/Automotive Detailer

**Jonathan Holtslag**

(06) 888 5043, 64 22 0100 579

[Jonathan@finaltouch.co.nz](mailto:Jonathan@finaltouch.co.nz)

[www.finaltouch.co.nz](http://www.finaltouch.co.nz)



Always Looking After the Locals  
**Village Four Square and Lotto**



### All You Need!

- ◆ Groceries
- ◆ Fresh Produce /Meat
- ◆ Magazines,
- ◆ DVDs,
- ◆ Beer/Wine,
- ◆ LPG Gas Swap/New Bottles
- ◆ Lotto

### Ashhurst Medicine Depot

Hours

Monday—Friday: 7.00am—8.00pm

Saturday: 7.30am—8.00pm

Sunday: 8.00am—8.00pm

Public Holidays: 8.00am—8.00pm

*Pravin & Padmini Patel welcome you at*

141 Cambridge Avenue, Ashhurst Phone: 326 8014

## Colyton Road Homekill

**Mike**

Phone/Text 027 978 1269

- ★ Primary Industries Approved
- ★ Trade Certified Butcher
- ★ All Aspects of Homekill

20 Colyton Road, Feilding





# Ashhurst Library

**Tuesday, 4th July—10.30 am in the Ashhurst Village Valley Centre**

Get ready for the ultimate magic show that will amaze and delight

**Glow Disco—Wednesday, 5th July**  
7 years and under: 5.00 pm—6.00 pm  
8—13 years: 6.00 pm—7.00 pm  
(Intermediate Level)

It's time to dance and glow again with our very favourite DJ—DFresh. Gold coin entry, some glow sticks here, but B.Y.O. too.

**Dinosaur Garden**  
**Thursday, 6th July 10.30 am—**  
**Registration required**

Create your own Jurassic garden with our great friend Chris from RECAP. Children under 8yrs with a caregiver please.

**Deep Sea Diorama**  
**Friday, 7th July—10.30 am**

Dive down deep to make your own amazing underwater diorama.

**Canine Friends**  
**Monday, 10th July—10.30 am**

Come along and read to our furry canine friends, they can't wait to sit with you and hear you read.

**Family Quiz Night**  
**Tuesday, 11th July—Registration required**

Register your family to be in for a fun night of trivia, facts and blindfolded taste testing.

**Book Character Morning Tea**  
**Wednesday, 12th July—10.30 am**

Come in dressed as your favourite book character and enjoy a yummy morning tea. Make sure to enter in our photo competition, details are below.

**Matariki Shared Kai**  
**Thursday, 13th July 10.30am—2.00 pm**

To celebrate Matariki, come on in for winter warming shared soup and bread. Reflect on the past year and plan for the future.

**Dress As Your Favourite Book Character—Photo Competition**

Time to dress up – it may be Harry Potter, it may be Heidi, whoever you want to be. Send in a photo to [ashhurst@pncc.govt.nz](mailto:ashhurst@pncc.govt.nz) by Tuesday, 11th July—5.00 pm. Voting will finish after the morning tea on Wednesday, 12th at 11.30am. Come in and have a vote.

**Manawatu Home Budgeting Service**

We are thrilled to be in partnership with Manawatu Home Budgeting Service who are conducting budget sessions in our library on Thursday or you can make an appointment in their Palmerston North office. If you would like to talk to their wonderful staff or need some excellent budgetary advice and guidance, please let us know.

**Karu Kanakana**

We are very happy to have Karu Kanakana sessions taken by our good friend Emere who will bring storytelling, games, waiata and fun for all the whānau. This is a bilingual session for preschoolers and their kaitiaki (caregivers).

Nau mai, haere mai, whakatau mai rā!  
Proudly supported by Pascal Street Community Trust.

Tuesday, 25th July—10.30 am.

**Talk with Mayor Grant Smith**

**Tuesday, 25th July 5.00pm—6.00 pm**  
Come in for an informal chat with our Mayor Grant Smith who will be available to talk to you about any issues and concerns. Refreshments are provided, you are all most welcome.

**Ashhurst Library Facebook**

Just a reminder that if you want to keep up-to-date with all our latest news, events or announcements, just visit us at <https://www.facebook.com/AshhurstLibrary> and click "Like".

**Ross Meads—Ashhurst Librarian**

**Anglican Parish of Pohangina**

St Mary Magdalene's Church, Ashhurst  
8.00 am First Sunday of the Month  
10.00 am every Sunday

**St Bartholomew's Church, Komako**

10.00 am 2nd, 4th and 5th Sundays.  
Priests—Rev Pam Barnett. Contact the Parish office for further information:

Phone 326 8543 or  
Email: [info@parishofpohangina.net](mailto:info@parishofpohangina.net)  
[www.parishofpohangina.net](http://www.parishofpohangina.net)

St Mary Magdalene Church—Office Hours (subject to change at short notice): Monday: closed,  
Tuesday: 2.00 pm—5.00 pm  
Wednesday: 2.00 pm—4.30 pm  
Thursday: 2.00 pm—5.00 pm  
Friday: 2.00 pm—5.00 pm

**Ashhurst Pohangina Squash Club**

Club night is Monday, from 6.00 pm. Come along and give squash a go! All members and newcomers welcome.

Courts are located at the rear of the Village Valley Centre on Guildford Street

Contact Braydon on 027 390 5611, [ashpohsquashclub@inspire.net.nz](mailto:ashpohsquashclub@inspire.net.nz), or find us on Facebook.

**Ashhurst Pohangina Lions**

The Ashhurst Pohangina Lions meet every second Thursday of the month at the R.S.A. Clubrooms at 6.30pm. This established and friendly Lions Club is community oriented.

**Contacts:**

Jack Zwart (President) 326 8958  
[standishzwart@gmail.com](mailto:standishzwart@gmail.com)

Brent Besley (Secretary) 329 4891

[brent.liz@inspire.net.nz](mailto:brent.liz@inspire.net.nz)

Mike Forlong (Memberships) 329 4741  
[forlong@inspire.net.nz](mailto:forlong@inspire.net.nz)

**Ashhurst Genealogy**

If you require assistance with Ashhurst History or Genealogy research.

Phone Heather Smith on 326 9989 or email [whizjoy@inspire.net](mailto:whizjoy@inspire.net)



Come and see the team at Kauri Physio for all your ACC and non ACC injuries

If you are unsure please email and we will advise whether physio is the right choice for you.

**KAURI  
PHYSIO**

619 Featherstone Street,  
Palmerston North  
Phone: 06 357 4424  
[Tamsin.mafi@kaurihealthcare.nz](mailto:Tamsin.mafi@kaurihealthcare.nz)

**GRAEME BILSLAND PAINTERS**

M: 027 581 2510 P: 06 357 3009 E: [bilsland@inspire.net.nz](mailto:bilsland@inspire.net.nz)

PO Box 20017, Palmerston North 4448



**Kids 'n Motion**

Now in its 21st year of providing music and movement for 0—5year olds within Ashhurst and the surrounding community.

Every Friday 9.45 am—11.15 am during school terms at the Village and Valley Centre, Guildford Street, Ashhurst. Cost: Gold coin donation.

Contact: Cherie O'Leary, Ph: 326 9688 Check out our Facebook page and like us! Kids 'n Motion is such a great group to come along too—see you there!

**Pohangina Yoga Classes**

Mondays 6.00 pm—7.00 pm \$10 per class or \$50 for six classes. Suitable for beginners and those with more experience of yoga.

Contact Catherine: [hauorayoga@gmail.com](mailto:hauorayoga@gmail.com), 021 0270 4400, [www.hauorayoga.co.nz](http://www.hauorayoga.co.nz), Facebook: Hauora Yoga

**Ashhurst Playcentre**

Licensed Early Childhood Education Provider. Over 50 years in your community. Spaces now available for children 0—6 years.

Call 326 9270 or email [ashhurst@playcentre.org.nz](mailto:ashhurst@playcentre.org.nz) or Drop in for a free visit and a cuppa.

Tuesday and Thursday 9.00 am—1.00 pm. 118 Stanford Street, Ashhurst

**Pohangina Local Christian Radio**

3ABN Radio is now broadcasting in Pohangina Township on 107.7FM. Offering lifestyle radio with a difference! Broadcast 24 Hours, 7 Days a week for the 'Best News Ever!' [www.3abn.org](http://www.3abn.org)

Contact Rex 06 356 1141 for Free Bible Studies, Books and DVD's.

**Ruahine White Water Club Report**

High river levels have led to the cancellation of several of our local club events on the Rangitikei, Otaki and Manawatu rivers during late summer months. However during May and June we were able to organise some very successful trips on the Whanganui and Otaki rivers which have been well supported with 20+ members taking part. With near perfect conditions our recent cruise through the Manawatu Gorge proved very popular with its unique views and challenging rapids. It was great to see

several of our younger members enjoying their day on the river.

As well as our river trips, the Club is now running monthly training sessions at our local Splashhurst pool. A big thank you to those members who are helping training new members and teaching the kayak eskimo roll technique. If you are interested in our kayak club you can check us out on our website—<https://www.rwwc.org.nz/>

**Max Grant**



**Ashhurst Rainfall**

112 mm of rain fell in May 2023, above the monthly average of 108.2 mm.

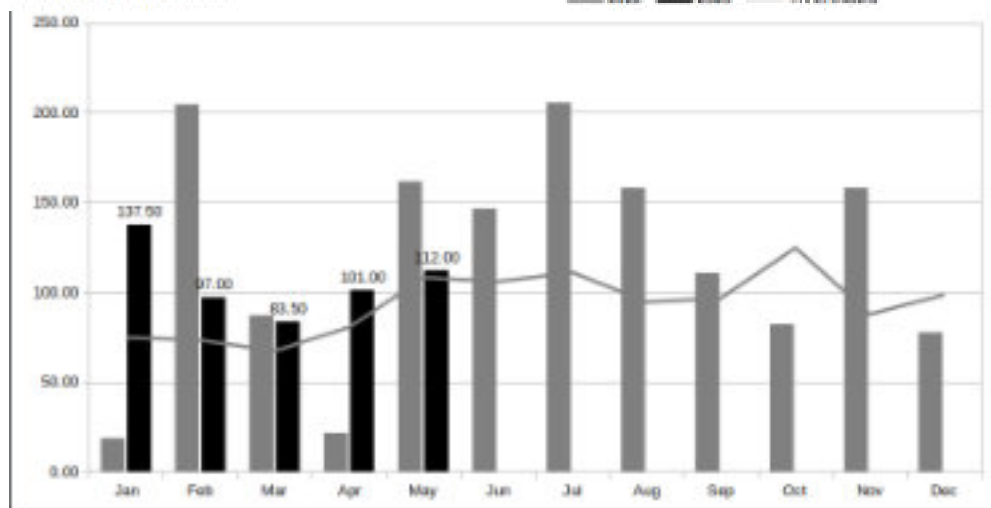
20th of May 2023.

Rain was recorded on 14 days with the highest one-day rainfall of 29 mm on the

The total annual rainfall is 531 mm. This is above the annual average of 404.6 mm.

**Mai Quang**

Ashhurst Rainfall 2023



**HOMESTEAD CATTERY**

Skilled and caring local staff with over 14 years experience

31 Pohangina Road, Ashhurst  
Viewing by appointment welcome

Ph: (06) 326 8064  
[www.homesteadcats.co.nz](http://www.homesteadcats.co.nz)  
Find us on [fb.com/homesteadcats](https://www.facebook.com/homesteadcats)



**Samaritans**

We are here

**24 hours a day**

Whether you are lonely, unhappy, ready to end it all

**WE ARE HERE TO LISTEN TO YOU**

358 2442 or 0800 72 66 66 | [www.samaritans.org.nz](http://www.samaritans.org.nz)

# GLIMPSE

Mayor Grant Smith

## Kia ora tātou

The second half of 2023 is underway, and I want to acknowledge and thank all the proactive community groups in and around Ashhurst who have contributed their ideas and activities to the year so far.

Last month saw the celebration of National Volunteer Week with the theme 'He wā pīataata - Time to Shine'.

The Village is blessed with a number of volunteer organisations who deserved this kind of spotlight, and it's great to see their members involved in progressing and preserving Ashhurst's unique character.

Among these groups is RECAP who held their AGM last month; the Ashhurst Food Bank with its recent successful Ladies Night Out fundraiser; and the Ashhurst-Pohangina Lions Club with their annual Smallholders Auction.

### Civic Awards

Members of these groups could be considered for the 2023 Palmerston North Civic Awards which open for nominations this month.

Community groups and organisations are invited to quietly research and write up their outstanding, most valued, and long-serving volunteers – though it's important that your nominees don't know that their names are being put forward.

When Civic Award nominations open on July 12, send their details in to arrive before the closing date on August 16.

Further Civic Award information is on the [pncc.govt.nz](http://pncc.govt.nz) webpage.

### The 'Woolshed'

Another valuable Village asset is the Ashhurst Community Trust.

The Trust have been involved in several local projects including the Ashhurst Skate Park, festive lighting, and the Ashhurst Healthcare Centre while providing various types of support for other community groups and activities.

Submissions have now closed on the Trust's current proposal to replace one of its Guildford St Village Valley Centre buildings sitting on land it leases from Council.

Named The Woolshed, the new structure will be the historic Awahuri schoolhouse to be moved on site for use primarily as a 'Menz Shed'.

A successful Menz Shed operates in Palmerston North, and a local version will give Ashhurst-based craftspeople the opportunity to get together, share their joinery and fabrication skills with younger generations, and initiate community projects.

Councillors now have the Trust's proposal and public submissions under consideration.

### Chillin' down the VVC

It's been my pleasure to dip into the mayoral budget to finance a new fridge-freezer for the Village Valley Centre kitchen.

This tops off a comprehensive programme of maintenance and refurbishment that Council has carried out on the building over the past couple of years.

It means users of the popular venue won't have to wait for a new general budget round to have an ageing but essential whiteware appliance replaced.

### On the Buses

Ashhurst residents can look forward to a new era of public transport from February 19 next year.

Introduction of the city's new electric bus fleet in early 2024 will also herald significant timetable and bus shelter upgrades for Ashhurst residents.

While the route into town won't change, there will be an increase in service, with seven return trips Monday to Friday and four return trips on Saturdays and Sundays.

Horizons Regional Council have been working on the delivery plan for the improved bus services under Horizons' new 'Connect' public transport brand.

Details of the changes are on the [pncc.govt.nz](http://pncc.govt.nz) website.

### Matariki

I'm looking forward to the Puanga Twilight Festival at Matariki in CET Arena's Pit Lane on Friday July 14 between 3 -7.30pm.

With kapa haka and musical performances, kids' activities, food and retail stalls, there'll also be an LED lighting display featuring the Matariki constellation and Puanga star.

### Meet the Mayor

Due to a recess for sitting councillors in July, the next 'Meet the Mayor' session for Ashhurst will be Tuesday August 29.

The Mayoral office is always open during working hours and contactable for resident advocacy.

Check the Council website and Facebook page for any changes.

Ngā mihi nui

Mayor  
Grant Smith JP



## ASHHURST COMMUNITY LIBRARY

06 326 8646

### Open days

Monday	2pm - 5pm
Tuesday - Friday	10am - 5pm
Saturday	10am - 1pm
Sunday	closed

Matariki, Friday July 14, closed

Access the full range of library digital resources at: [citylibrary.pncc.govt.nz](http://citylibrary.pncc.govt.nz)

## SPLASHHURST COMMUNITY POOL

06 350 0849

### Normal hours

Tuesday - Friday	6am - 9.30am + 1pm - 7pm during school term 6am - 7pm during school holidays
Saturday	8am - 6pm
Sunday - Monday	closed

Matariki, Friday July 14, 8am – 6pm

Splashhurst! online:  
[clmz.co.nz/splashhurst](http://clmz.co.nz/splashhurst)

## ASHHURST RUBBISH + RECYCLING

Rubbish bag collection Tuesday morning.  
Bags out by 7.30am.

Recycling Bin	Glass Crate
18 July	11 July
1 August	25 July
15 August	8 August

## MULGRAVE ST TRANSFER STATION

Recycling, green waste and general rubbish disposal.

### Open Days

Tuesday	1pm - 3pm
Saturday	10am - 4pm

Council's 24/7 contacts are **06 356 8199**, the **Council Facebook** page, and the **Snap Send Solve** app to quickly report anything that needs attention or fixing.

**PALMY**  
PAPAIOEA  
PALMERSTON  
NORTH  
CITY

[info@pncc.govt.nz](mailto:info@pncc.govt.nz) / 06 356 8199 / [pncc.govt.nz](http://pncc.govt.nz)

## Published by The Ashhurst Village Voice Society Inc.

### Contacts

Editor: Llyvonne Barber

Phone: 022 051 6315

ashhurst.voice@gmail.com

PO Box 38, Ashhurst

Advertising: Grey Smith

Phone: 326 8075; 021 175 1726

rgcasmith@inspire.net.nz

Proof-reader: Kaye Farrugia

### Letters to the Editor

Letters under 200 words are preferred.

The writer's contact details are required on all letters (not for publication), including address, email and phone number. We may need to contact you to clarify minor details.

The editor reserves the right to edit, abridge or decline letters or articles without explanation. Pen names or letters submitted elsewhere are not acceptable.

If supplying images, high resolution images are required. Please feel free to contact the editor if you are unable to email images.

### Advertising Rates & Information

Articles and community notices are free.

Adverts can vary from a few lines in the side column to a double business card size. Conditions apply. A 15% discount is offered if you pay in advance for a full year (11 issues). A business card size advert is to be 60mm by 100mm at 300dpi and costs \$50.

The cost varies proportionally for smaller and larger sized adverts.

For further information on advertising costs and payments please contact Grey Smith.

For technical details please contact the Editor. Contact details above.

Advertisers, we prefer that you supply files in pdf format. Please note that files supplied in .pdf format are unable to be adjusted from our end. Adverts can be created by the Editor for a small additional cost. These can be adjusted as required.

### Village Voice Deadline

Deadline for articles and advertising submissions for the next edition is:

**5.00 pm Thursday, 20th July.**

We cannot guarantee your submission will be included after this date.

## Ashhurst Indoor Bowls

A busy time at club with a mix of Club Championships, Manawatu Centre events and Rep games and a good number of our members competing at the New Zealand Nationals in New Plymouth.

Our Club Championship Triples was won by Bruce Meyer, Cyril Kells and Jennie Veale. This has been followed up by the Championship Pairs with finals due to be played shortly.

We also play a "Trophy Night" once a month with the evenings winners each taking home a Lotto ticket. To date I have not heard of any great windfalls.

At Centre level, the Masters Fours has been played in Bulls with a Composite team of which Etty Wells was a member, placing 2<sup>nd</sup>. Greg and Jennie Veale were part of another Composite team placing 3<sup>rd</sup>.

The very competitive Ladyman Pairs saw Bruce and Sarah Meyer Champions and they now go on to compete at the Zone finals later in the season.

The Manawatu A Representative team had a very successful day against Taranaki with a winning score of 111.5 to Taranaki's 32.5. Ashhurst Club members Phil Clinch, Tim Veale, Bruce Meyer and Alan Cowley chosen in the Rep team.

Our members enjoyed great weather and competitions at the New Zealand Nationals.

Results are:

Singles - Cameron McKay (last 16)  
Tim Veale (last 64).

Pairs - Tim Veale (last 32).

Triples - Alan Cowley (last 8) Etty Wells (last 32).

Fours - Etty Wells (last 16).

Well done to everyone as it is such an achievement to qualify for Post Section games at the Nationals.

The highlight would have to be Tim Veale being named in the North Island team to play the South Island team in August. Congratulations Tim!

**Margaret Grant—Publicity**

## Ashhurst Clay Target Club

A bit of a change from the huge turnout last month for our annual fundraiser—only four squads so we whipped through things quickly and that left time for a couple of fun shoots afterwards.

May was our annual Paul Jones Memorial Shoot (gun down) and Ken Simonsen won this again.

Our newest club member, Don Bauckman, won the Club DTL.

"Pies" Steve Nicholson turned up again (last seen July 2022) and caught

up with club stalwarts (see photo).

**Paul Jones Memorial Trophy (gun down)**

**Top Gun:** Ken Simonsen

**Top Handicap:** Mark Collis

**Club Shoot DTL**

**Top Gun:** Don Bauckman after a shoot-off with Joby Stella

**Top Handicap:** Craig Hocken after a shoot-off with Tony Bucknell and Terry Robinson

**Karen Pawson—Secretary**



*Left Photo: Winners on the day (L—R): Simo, Don, Mark & Craig*



*Right Photo: Pies catching up with Paul, Andrew & Simo*