



Ashhurst Village Voice

*Informing the communities of
Ashhurst & Pohangina*

ISSN 2324-5468 (Print)
ISSN 2324-5476 (Online)

February 2025

https://recap.org.nz/village_voice
Established 1997

Community Comment

The arrival of some summer weather driving away cool southerlies is welcomed. A shame that the warmer weather arrives as school resumes. The dry weather has gardeners striving to keep their plants watered. Please take care to use water sensibly using conservation tactics of mulching, targeted irrigation and timing outside of peak heat. Young street trees and fruit trees in reserves may also need a bucket of water when they droop.

The new Gorge Road and its connections to local roads are on track for completion by June 2025. Some form of grand opening is in planning stages with options open for community involvement. Good ideas including community groups can be shared with the team at the New Zealand Transport Agency site office.

Most of the heavy construction phases of bridge building and road foundations are now complete, although final road sealing, signage and barriers is ongoing. Connections to local roads, and access to the Gorge Walkway and Western Gateway Reserve are the current focus at the Ashhurst end of the project.

One of the conditions of consent was to ensure that the shared



pathway had viable access to the Ashhurst side of the river. The proposed clip-on to the Manawatū river bridge for cycle and pedestrian access is not a viable option due to insufficient strength or foundation support. Scoping plans for an independent shared path bridge next to the road bridge have been developed, but has a multi-million dollar price tag. The existing bridge, with low barriers and insufficient width, is not safe for pedestrians or cyclists once the state highway traffic resumes. New Zealand Transport Agency and the current government have some difficult decisions ahead. We hope common sense prevails over cost, before injury or death focuses their attention.

The draft Reserve Management Plan for the Ashhurst Domain has passed Council's hurdles and should be available for consultation as the Village Voice is distributed. This management plan is an update to the original version established almost 30 years ago and will guide its ongoing development and use. The Ashhurst Domain has various zones for sports, picnics, native bush and so on, which are



Photos: Left—Road, rail and aerodrome from Ashhurst Domain; Right—View of the new protective flood protection of rocks below the railway bridge.

Contents

Letter From the Editor	2
Ashhurst R.S.A. Women's Section A.G.M.	2
Craft on Cambridge	2
Have Your Say—Totara Reserve	2
Happy New Year from the Food Bank	2
Ashhurst Senior Citizens Association	3
Staying Safe: A Refresher Course	3
Ashhurst Memorial R.S.A.	3
Arohanui Farming For Hospice	4
Getting Wild—Nature School in Ashhurst	5
Book Review: Delirious Moths: Part Two	6
Te Ahu A Turanga Update	7
Ashhurst Library	8
Ashhurst Pohangina Football Club	9
Ashhurst Bowling Club	9
Ashhurst Rainfall	10
Palmerston North City Council	11
MP Suze Redmayne	12
Ashhurst Clay Target Club	12
Village Voice Contacts	12

Deadline for March Issue—Thursday, 20th February

Letter from the Editor

Hello all, welcome to 2025 and the first issue of the Village Voice for the year. I hope you all had a safe and happy holiday period.

As I was putting the Village voice together I experienced a rather sharp jolt, that was likewise felt by many others in our community. A very shallow, strong earthquake a short distance from Ekatahuna. A timely reminder that we live on the shaky isles. So here is another reminder that it is important to have an emmergency kit and go bag for each person in your family.

We all hope that a disaster will never occur, but we know that they do. Having a plan and equipment ready to grab in an emergency will make things less stressful if the worst does happen. If you do not have anything ready, start with one item a week. Water is one of the most important items to have. Aim for a minimum of 15 litres per person (3 litres for 5 days), in two locations about your property (in case one becomes inaccessible). Food, dried or tinned that can be eaten with little to no preparation is also good to have. A simple start can make a big difference.

Llyvonne Barber—Editor

Ashhurst Village Radio

Your Community FM Radio Station
Broadcasting 24/7

Community notices are free.

Businesses advertisements 30
second \$5.00

Free training for volunteers joining the
staff.

Contact: 027 7525 0775

ashhurstvillageradio@gmail.com

Village Voice Funding

The Village Voice has a circulation of 1880 and is delivered free to households in Ashhurst and the Pohangina Valley. The newsletter is run by a small volunteer incorporated society and funded solely by our loyal advertisers. Please support these community-minded businesses. If you wish to support this publication in any way, please refer to the back page and contact Grey Smith.

Community Comment

recognised in this plan. The Council has attempted to meet user's interests in how each area is used and developed.

Some new ideas are included, which will likely attract a range of views in the consultation process. It is proposed that the name be changed to 'Otangaki—Ashhurst Domain', in order to recognise its past history.

An option for the city's first natural burial site is also included in the north-west corner of the lower terrace. This area is currently grazed and lies above

the flood line of 2004. Natural processes will reclaim these burial sites with native trees planted to extend the bush area over time.

Make your views heard in this consultation process which closes 4th March 2025. An information session and barbecue will be held at the Domain from 10.00 am - 12.00 am on Saturday, 15th February for the community to gather more information and ask Council officers in attendance.

Harvey Jones

Ashhurst R.S.A. Women's Section A.G.M.

Notice of annual General Meeting.

The A.G.M. will be held on Monday, 10th March 2025, at 3.00 pm at the R.S.A., located at 74 Cambridge

Avenue, Ashhurst.

**Raewyn Parsons—Vice President/
Secretary Ashhurst Memorial R.S.A.
Women's Section**

Craft on Cambridge

Another wonderful year of crafting, friendship and road trips has passed, and we are now looking ahead to 2025.

Meetings for this year will begin on Monday, 27th January at 1.00 pm and Wednesday, 29th January at 9.30 am, at the Chapman Hall next to the Anglican Church in Cambridge Avenue.

We're an eclectic group with different skills who enjoy working on

our projects in a group, sharing our experiences (not always about craft!) and laughing a lot!

If this interests you, please bring whichever project you're working on to the hall at either time and check us out to see if this could be the place for you. For more information, please contact me, Marianne, on 027 627 2054."

Marianne Crawford

Have Your Say—Totara Reserve

Horizons Regional Council is asking the community for feedback on their draft reserve management plan for Tōtara Reserve Regional Park.

Submissions on the draft plan can be

made from Thursday, 5th December 2024 through to 5.00 pm on Friday, 7th February 2025. Further information and the online survey is available at www.haveyoursay.horizons.govt.nz.

Happy New Year from the Food Bank

This year marks a new phase in the life of the Food Bank with the completion of our alterations and the introduction of new systems.

We have been very fortunate to have Richard Tankersley from the Ashhurst Community Trust to oversee the building project and the installation of storage cupboards for our goods. Our

thanks also go to Richard Hanson and his team from DBS Building Services Ltd for their professional workmanship and Jason Chilvers of Chilvers Property Maintenance, who donated our new fridge/freezer.

If you live in Ashhurst or the Pohangina Valley and your budget is feeling the pinch, please come and



KITCHENS DESIGNED AND MANUFACTURED

06 326 8849 sales@villajoinery.co.nz
135 Mulgrave Street, Ashhurst, 4810, NZ

villakitchens.co.nz



MIXED ANIMAL PRACTICE

Practical, friendly and affordable animal care

Phone: 06 326 9257

Mobile: 027 572 9353

Clinic Hours

Monday 8.30am - 5.00pm

Tuesday 8.30am - 5.00pm

Thursday 8.30am - 5.00pm

Saturday 9.00am - 12 noon

Wednesday & Friday evenings by appointment

141 Cambridge Avenue

Happy New Year from the Food Bank

check us out. We're open from 2.30 pm - 3.30 pm on Thursday afternoons and provide a range of non-perishable foods. When funds or donations allow,

we also include some perishable items. Our friendly volunteers look forward to seeing you.

Marianne Crawford

Ashhurst Senior Citizens Association

A warm welcome to 2025 from the Ashhurst Senior Citizens' Association and to start the new year off we have moved to a new venue! Meetings will now be held at the Ashhurst Village Centre, which is spacious, air conditioned, has ample parking and easy access. Our first meeting will be on Thursday, March 6th, at 2.00 pm.

So please come and join us, regardless of whether you are 'senior' or not! Yearly membership is \$10 and each meeting consists of entertainment and a delicious afternoon tea. We look forward to kicking off our 2025 programme in this great venue.

Stephanie Madgwick—Secretary

Staying Safe: A Refresher Course

- Had your licence for decades but never refreshed your Road Code knowledge?
- Feeling unsettled because you have a medical coming up to renew your licence?
- Curious about what all these changes to road layout and signs mean?

less than an hour for every decade you have held your licence. We promise it is engaging and not boring! Afternoon tea included!

Date: Thursday, 20 February
Time: 1.00 pm-4.30 pm
Location: Ashhurst

Registration required

Contact Age Concern Palmerston North and Districts phone. 355 2832 or email eliza.stapley@ageconcernpn.org.nz

Come to our free classroom—based driving refresher. Staying safe is a refresher course for older drivers. It's

Ashhurst Memorial R.S.A.

Happy New Year. I hope that everyone had an enjoyable time and were kept safe. The Ashhurst R.S.A. is business as normal.

Some of you driving past the R.S.A. may have noticed the flag at half mast. Half mast is flying the flag from part of the way down the pole, not from the top, to show respect and sorrow for someone who has just died. In this case we were mourning the tragic death of Police Senior Sergeant Lyn Flemming who was killed while on duty. Our thoughts are with her family and colleagues.

The R.S.A. has several types of membership.

Returned Members—those who have served overseas in time of war or emergency;

Service Members—those who have served or are serving in the New Zealand Defense Force or New

Zealand Police;

Associate Members—spouses and children/grandchildren of Returned Service Members and other persons of good standing in the community.

For our current members Subs for 2025 can be paid now, as the current subscriptions finish at the end of February. These can be paid in all of the normal ways. But we also now have the ability to pay online: <https://www.ashhurstrsa.co.nz/membership/> For those who want to join the R.S.A. check out our website <https://www.ashhurstrsa.co.nz/> or call in. As we have mentioned, you don't have to be in the services to become a member to enjoy our safe, friendly environment. Our facilities are for the whole community to be part of and we are a non profit organisation, which allows us to offer very good value as well. This can be

JustOnePlease

Super kia ora. The Justoneplease item for the Safe House for February 2025 is **Rubber Gloves**, all sizes. Many thanks, kindest regards.

Contact Louise Bowe on 020 410 86128 for more information.

Meditation Class

Overcoming Stress and Anxiety will be held every Thursday from 10.00 am - 11.00 am in the lounge of the Village Valley Centre, followed by morning tea. Suggested donation: \$7.

Classes resume on 13th February For more information, go to www.meditateinpalmerstonnorth.org.

Ashhurst Ladies Coffee Group

10.00 am—11.30 am at The Village Coffee & Co, 62 Cambridge Avenue, Ashhurst. A regular Thursday weekly coffee group, for ladies of all ages in Ashhurst for some social time, a few laughs and new friendships.

WE NEED YOUR HELP!



Calling all residents...

We're on a mission to make our area one of the safest, best prepared and friendliest in New Zealand! Whether you're a new or long-time resident, Palmerston North Neighbourhood Support is here to help you:

- Get to know your neighbours
- Receive emails + alerts that will keep you up-to-date
- Gain tips and resources, including from NZ Police
- Be able to give back or receive support
- And much much more, all for FREE!

To learn more or get involved, visit us online or contact:

Palmerston North Neighbourhood Support
Alison Jarden JP, Manager
06 355 4468 | 021 0248 4139
info@pncitysupport.com
www.pncitysupport.com



Creating safe, resilient and connected communities.

herb farm | CAFE

Where tranquility meets family fun!

This summer, unwind at The Herb Farm. Enjoy a relaxing break in our café, then explore the gardens or let the kids have fun in the playground. Whether you're here for a peaceful stroll, something delicious from our café, or a little retail therapy, it's the perfect place to spend quality time with your loved ones and enjoy the beauty of nature.




86 GROVE ROAD, ASHHURST
PH 06-326 7479 | herbfarm.co.nz | @herbfarmcafe

CAFE - GARDENS - SHOP - WORKSHOPS & EVENTS - FUNCTIONS

County Fayre at Pohangina

The creative, social and historical heart of the Pohangina Valley

Open
Sunday 1.00 pm—4.30 pm
Open Weekdays by arrangement
976 Finnis Road, Pohangina



- Historic Maps and Photographs
- Roll of Honour
- Crafts and Produce
- Devonshire Afternoon Tea/Coffee
- Scones
- Muffins
- Ice Cream Sundaes
- Milkshakes

Available for hire for small events
EFTPOS and FREE WIFI now available

Find us on Facebook at <https://www.facebook.com/CountyFayre>
or Email countyfayre@inspire.net.nz

We are a community based project run by volunteers

Awahou Pohangina Playgroup

'A lovely country playgroup' est. 1967.
Meet every Wednesday during term
time 9.30am-12.00pm.

Location: Awahou School Hall, 518
Pohangina East Valley Road.

Drop in for a visit, enjoy a cuppa,
morning tea and chat. Contact: Arna
Taylor—samnarna@outlook.com

Ashhurst Memorial R.S.A. Inc

74 Cambridge Avenue, Ashhurst.
Phone: 326 8296

Monday 3.00 pm-6.00 pm
Tuesday 3.00 pm-7.00 pm
Wednesday 3.00 pm-10.00 pm
Thursday 3.00 pm-9.00 pm
Friday 3.00 pm-11.00 pm
Saturday 2.00 pm-7.00 pm
Sunday 3.00 pm-6.00 pm

**Manawatū Rangitikei Methodist
Parish—Ashhurst, Bunnythorpe and
Pohangina Congregation**

Ashhurst Devonport Worship and
Community Centre

10.30 am 1st Sunday each month

Pohangina Community Church
10.30 am 3rd Sunday

Contacts: Parish Office—323 4127
Selina Brightwell—022 184 2337 or
326 8355

Ashhurst Bowling Club

67 Stanford Street.

New bowlers or anyone thinking about
playing please either come along and
have a go or get more info from
Adrienne on 027 2836317.

Ashhurst Memorial R.S.A.

extended throughout the country with
our affiliated clubs.

Friday nights are a great time to enjoy
the hospitality. We have raffles, Jokers
Wild and a membership draw, so come
on in.

The A.G.M. this year will be on Sunday,
30th March at 1.00 pm.

The Bowling team is running a fun
Triples day on 9th March, as the name
suggests, get a team of three together
and come down for some fun. For further
details contact Mike Hale or any of the
bowlers at the R.S.A.

Only a couple of weeks to go before
Bingo starts at 7.00 pm on Tuesday, 4th

February.

The Gym has recently opened and
ready for use. Remember, it is not just for
the young. There is a lot of research that
suggests regular physical exercise offers
numerous benefits for older adults—
including improved mobility, strength,
and balance, which can help prevent
falls and maintain independence. It also
enhances cardiovascular health,
reducing the risk of heart disease and
stroke. The Gym offers R.S.A. members
a great deal, for membership.

We look forward to seeing you at the
RSA.

Peter Knight—President

Arohanui Farming for Hospice

Arohanui Hospice's Farming for
Hospice program has been building
strong partnerships with the rural
sector for over 30 years, helping to
raise vital funds to support specialist
palliative care services across the
Manawatū, Horowhenua, Rangitikei
and Tararua regions.

This month, the focus is on the Cull
Cow Campaign, encouraging local
farmers to donate the value of a cull
cow to Arohanui Hospice. Such
contributions directly support the
delivery of specialist palliative care
and support to patients and their
families during one of the most
challenging times of their lives.

In the past year alone, Arohanui

Hospice cared for more than 1,100
patients, with an incredible 79% of that
care delivered entirely in the comfort
of patients' homes. This wouldn't be
possible without the generosity of our
community, including rural supporters
who understand the value of looking
out for one another.

"Farming for Hospice is a wonderful
example of how our rural community
can make a significant impact," says
Michelle Connor, Director of the
Foundation, Arohanui Hospice. "Every
donation, whether big or small, helps
ensure we can continue providing
specialist care to patients and their
whānau free of charge."

Continued on next page

**Talk to the
specialist!**

Ashhurst's only real estate office,
Next to the lotto 4 square, Cambridge Avenue

Emma Tankersley Residential Sales Consultant
M 027 566 3778 E emma.t@pb.co.nz PBAshhurst

Property Brokers Ltd Licensed REAA 2008

Property Brokers^B

pb.co.nz

your local ashurst electrician

Knowles Electrical

Electrical •
Home Ventilation •
Security •
Heat Pumps •

Michael Knowles
registered electrician
M 022 024 8156
E michael@knowleselectrical.co.nz
W www.knowleselectrical.co.nz

no travel or service charges within the village mon-fri

For all your automotive needs

**VILLAGE VALLEY
AUTOMOTIVE Ltd**



- WOF
- TYRES
- REPAIRS
- BATTERIES
- SERVICING
- TRAILER HIRE
- SPIT ROAST HIRE
- AIR CON SERVICING
- WHEEL ALIGNMENTS

Ph 06 326 8239
www.vva.co.nz

@ office@vva.co.nz

📍 54 Cambridge Ave, Ashhurst

Arohanui Farming for Hospice

If you'd like to get involved in the Cull Cow Campaign or find out more about Farming for Hospice, they'd love to hear from you. Contact Debbie Stewart on 027 687 1020, let your processing agent know you'd like to donate to Arohanui Hospice, or visit

their website at www.arohanuihospice.org.nz. Together, we can make a real difference in the lives of families throughout our region.

Thank you for helping us ensure that everyone facing a life-limiting illness receives the care they deserve.

Getting Wild—Nature School in Ashhurst

Wild Nature School has been running for 18 months in Ashhurst providing child centred, nature education with a philosophy of risky play and self directed learning.

Kindness is our guiding kaupapa and that means kindness to ourselves, others and the environment around us.

Wild Nature School provides a one day school option for school aged students, a holiday programme and Wildlings, a half day session for caregivers/parents to attend with their under 7 yr olds.

As a registered primary teacher, an advocate for empowering students to make their own decisions, take risks and someone who values autonomy in my own life I have been heartened & overwhelmed by the positive response to our 'Wild Things' programme.

Kids just *love* coming out to the forest, making a fire, cooking on it, whittling, sawing wood, making huts, getting creative, meeting new friends and playing cooperative games.

We focus on meeting each child where they are, while developing genuine relationships with them and encourage students to be autonomous, within our safety guidelines. This increases self esteem, confidence, motivation and engagement while calming and grounding kids. There is increasing research about the huge benefits of being outside in nature—immune

systems boosted, hormonal systems & inflammation healed and brains engaging by being off devices, outside with natural light, fresh air and feet and hands in the earth.

We aim for nature connection so we play games that involve hiding, we cook on an open fire, we operate in all weather and we have plenty of time for activities, so no rushing.

We see kids lose their anxiety and stress. We have students blossom as their confidence builds. We see creativity and leadership skills in abundance by allowing kids time to follow a curiosity or interest.

To contact us please email - hello@wildnatureschool.nz or www.wildnatureschool.nz (website coming).

To find out more about self directed learning my book Natural Learning is available directly from me or from Bruce Mackenzie Books, Inspire Me and Mewingtons Books.

How can you help?

Wild Nature School is a private school and we appreciate support in the form of donations and sponsorships.

- Help a child attend a day a week for a term by offering a scholarship or half scholarship
- Donate a load of firewood or buy some equipment

Jane Evans

Book Review: Delirious

'Delirious' by Damien Wilkins

This is the first novel I have read by this author, who is Director of Modern Letters at Victoria University, although

he has previously written 14. I will certainly be looking for his other books as this one is quite exceptional.

Continued on next page

Steady As You Go

Steady As You Go—A falls prevention programme. One hour of slow purposeful exercises for Seniors, aimed at strengthening weakened leg muscles and helping to improve balance. \$2 per session. Otangaki Lodge, 69 Oxford Street, Ashhurst

Contact Age Concern phone 355 2832 for more details.

St. Columba's Catholic Church

St. Columba's Catholic Church would like to welcome you to join us for Vigil Mass, celebrated every Saturday at 5.00 pm.

Ashhurst Scouting

Keas (Mon 5.30 pm-6.30 pm), Cubs (Wed 6.00 pm-7.30 pm) and Scouts (Mon 6.45 pm-8.15 pm), during school terms.

Contact Julie (Group Leader) on ashhurst@group.scouts.nz for more info.

A.P.V. PLUMBING LTD

Kenny Allison
Registered Craftsman
Plumber/Gasfitter

- Free Quotes & Consultation
- Plumbing & Gas
- Central Heating Installations
- All Work Guaranteed
- Competitive Rates

22 Mulgrave Street
Ashhurst

M: 027 241 3457

E: apvplumbing@xtra.co.nz

NO JOB TOO BIG OR TOO SMALL !!!



Colyton Road Homekill

Mike

Phone/Text 027 978 1269

- ★ Primary Industries Approved
- ★ Trade Certified Butcher
- ★ All Aspects of Homekill

20 Colyton Road, Feilding



BW BUILDERS

NEW HOMES · RENOVATIONS · ALTERATIONS · DECKS AND FENCES



027 288 6566

Bradwrightbuilders@gmail.com

Ashhurst Plunket

Tuesdays and Wednesdays by appointment only.

Contact www.plunket.org.nz, or 027 276 8145.

B4 School Check

The B4 School Check is the final Well Child check.

Free for all four year old children. It includes a distance vision screening test, audiometry hearing test, height, weight, dental health and child development.

Contact 0800 692 445

Strength and Balance Ashhurst

Move it—or Lose it! Join our friendly group for a gentle, low impact exercise class, (no floor exercises) with an emphasis on fun. Optional—go for coffee afterwards.

Village Valley Centre, Monday mornings, 9.45am-10.45am.
Cost: \$10 per class.

Enquiries: Maria—phone 329 4166

Ashhurst Budgeting Service

Thursday 9.30am-1.00pm.

Operating from St Mary Magdalene Anglican Church, 67 Cambridge Street, Ashhurst.

For Appointments contact: Manawatū Home Budgeting Service. Phone: 358 2279; Cell: 0800-228 343.

Ashhurst Foodbank

Open 2.30pm-3.30pm every Thursday. Methodist Church, Bamfield Street, Ashhurst.

Contact: Marianne 027 627 2054

Ashhurst Red Cross

Secondhand Shop, Cambridge Avenue. Happy New Year, kicking 2025 for Ashhurst Red Cross shop.

We have summer clothing, shoes, school uniforms, books, DVD's and treasures.

Come on in to get your bargains at our low cost shop, something for everyone.

Monday-Thursday 12.30pm-2.30pm

Friday 10.00am-1.00pm or when the flags are out.

Donations; good reusable items gratefully accepted *only* when the shop is open.

Book Review: Delirious

Ageing is not a particularly popular or attractive theme for a novel but this story tells of the different attitudes and points of view from people at all stages of life. We hear from the grandparents, the parents and the children of the family in this story.

The main characters, Mary and Pete, are in their seventies and selling their home of many years when we first meet them. There has been much deliberation about moving to a retirement village, often encouraged by well-meaning friends and family. Are they making the right decision? They don't know but decide to take their chances.

This decision will define their future, maybe they are trying to let go of their past. There have been several tragedies in the wider family that they cannot put behind them. Central to this sadness was the death of their 11

year old son by drowning at a school camp many years ago.

The majority of the story is centred on their past lives and thus we, as readers, get points of view on ageing from all age groups. A highlight is Peter's mother suffering from dementia at about the age he is now. He remembers the struggles and also the laughter he shared and enjoyed with his mother at that time.

After moving to the retirement home the couple are made aware of how much better off they are healthwise than many in the Village. Are they in the right place for them personally or have they made a terrible mistake?

You will be moved by the emotional journey their story takes you through and it will stay with you long after you have closed the book.

Robyn Dare

Moths: Part Two

In the previous article I wrote about moths and described a few of the species that are present in New Zealand. We have a large number of moth species and the vast majority are native to this country. In this article I will describe a few more of our native species.



The Common Bag Moth is rather interesting as the caterpillar constructs a silk bag in which it lives and grows. It moves about on a plant, feeding mainly at night, and expanding the bag as it grows larger. The bags can often be seen hanging on trees and shrubs. The caterpillar eventually changes into a pupa from which the



If you have an eye for detail, you may be lucky enough to find a small moth called the Sharp-tipped (or Brindled) Bell Moth. At first sight these moths look surprisingly like small pieces of twig, a useful camouflage if you are likely to be eaten by a bird. The colour of these moths is variable, especially in the female, which also assists the camouflage. I once found two of these

Photos: Left—Bag of the common bag moth; Right—Sharp-tipped Bell Moth

Continued on next page



Riverside Orchards

**For Your Fresh Fruit and Vegetables,
Fresh Baked Bread,
Cheese, Milk, Family Pies**

Daily delivery into Ashhurst and Palmerston North
Order online now at www.riversideshop.co.nz

1346 Napier Road (opp Petrol Station) Ashhurst
P: 06 326 8800 F: 06 326 8750 E: sales@riversideshop.co.nz

O'LEARY TREE SERVICES LTD

Craig O'Leary

Dip. Hort/Arb. Certs, Trade Cert. Hort.
30 Years Experience

**Tree Removal & Trimming
Pruning, Hedge Trimming**

P. 06 326 9688 M. 027 672 7747

Moths: Part Two

moths resting on a Nikau Palm leaf in the Manawatu Gorge.



Another moth species that uses camouflage to reduce its visibility to predators is the Mahoe Stripper. The caterpillars live on Mahoe trees and can strip the leaves. Their colour pattern makes them hard to see when stretched along a stem. Adult moths are mottled in various shades of green,

Photos: Left—Mahoe Stripper Moth; Right—Oblique-waved Fern Looper

so blend in well if resting on a mossy tree trunk during the day. They are active at night, visiting flowers to feed.



A moth species I have seen only once is the Oblique-waved Fern Looper. This is a relatively large moth that has flattened wings when resting, and is apparently both common and widespread. The caterpillars feed on different tree fern species so the moth is probably more likely to be seen in native forest.

Grey Smith

Te Ahu a Turanga Update

Four years on from construction teams starting work on Te Ahu a Turanga: Manawatū Tararua Highway, the countdown to the road's opening has begun.

The highway is on track for completion by the middle of 2025 but there is still plenty of work to do before the road is opened to the public.

At Parahaki Bridge across the Manawatū River, the team is installing

barriers and completing a viewing platform, situated in the middle of the bridge facing east towards Te Āpiti Manawatū Gorge. They are also getting ready to install the expansion joints, the last remaining parts of the structure to be completed, which connect the bridge deck to the abutment.

After this, a layer of asphalt will be

Continued on next page

Ashhurst Yoga Classes

Gentle beginner to intermediate yoga classes are running weekly on Wednesdays, 9.15am - 10.00am at the Village Valley Centre.

Cost is \$10.00. Please bring your yoga mat.

Working to your own level we focus on mindfulness, building and maintaining strength and flexibility—you don't need to have either to start yoga!

Phone or Text Vanessa: 027 243 0187 or email vlbphotography@inspire.net.nz, or visit www.vlbphotography.co.nz.

— Sewing —
— Alterations —
— Repairs —
— Hemming —

Pickup & Delivery Service
Colleen Blair
Hanlon Road, Ashhurst
027 341 8077



Ashhurst's LANDSCAPE SUPPLY YARD

- ✓ Topsoil/Compost Mix
- ✓ Organic Compost
- ✓ Organic Lawn Mix
- ✓ Organic Vege Mix
- ✓ Organic Garden Mix
- ✓ Topsoil (screened)
- ✓ Weedmat 1 & 2m
- ✓ Black Mulch
- ✓ Bark Nugget
- ✓ Lime
- ✓ Pea Straw
- ✓ Pea Metal
- ✓ Crusher Dust
- ✓ Builders Mix
- ✓ Nova Coil
- ✓ Mulch
- ✓ 5mm Screened Sand
- ✓ 20mm Washed Stone
- ✓ Crushed Rotten Rock
- ✓ AP20 Top Course
- ✓ AP65 Base Course
- ✓ Cement Bags 20kg
- ✓ RTU 45 Min Concrete Bags 20kg
- ✓ 20mm White Chip

Contact: Greg 027 557 8809

greg@manawatucontracting.com

145 Mulgrave Street, Ashhurst
just along from the PNCC Recycling Centre

HOME DELIVERIES AND BULK DELIVERIES AVAILABLE

LJ Hooker

Your Ashhurst Property Specialist

*If you are thinking about
selling call me first.*



Peter Colville
021 474 557

peter.colville@ljhookerpn.co.nz

Peter Colville -
LJHooker Palmerston North

Manawatu (1994) Ltd - Licensed REA 2008

Ashhurst Playcentre

Licensed Early Childhood Education Provider. Over 50 years in your community. Spaces now available for children 0-6 years.

Call 326 9270 or email ashhurst@playcentre.org.nz or drop in for a free visit and a cuppa.

Monday 10.30 am-2.30pm
Tuesday and Thursday 9.00 am-1.00 pm. 118 Stanford Street, Ashhurst

Ashhurst Clay Target Club (claybird shooting)

Meets the last Sunday of every month from 9.30 am at 651 Valley Road. Anyone welcome to join us
Queries: Ken Simonsen,
Phone: 329-4800

Ashhurst and District Senior Citizens Association Inc

Meet on the first Thursday of each month in the Methodist Church Hall, Bamfield Street, at 2.00 pm. We invite you to come along and enjoy an afternoon of friendship and entertainment.

Contact: Adrienne Harding—Secretary
027 283 6317

Local Justices of the Peace

Mrs AK Rutherford—Available by appointment—027 404 8551

Mr F Saua

Pohangina Road RD 14—029 254 3206

Mr JC Culling

Pohangina Road—027 289 5252

J Wakeford

Hiwinui—022 319 0434

Craft on Cambridge

At the Chapman Hall, Anglican Church, Cambridge Avenue, on Monday afternoons 1.00 pm-3.00 pm and Wednesday mornings 9.30 am-11.30 am. B.Y.O. craft and the cost is \$2 each time.

A friendly, relaxed group who can help with your UFOs!

Contact: Marianne Crawford 027 627 2054

Matwork Pilates Sessions

Tuesdays at 6.00 pm—55 minutes. Centennial Room at the Village Valley Centre.

Free first session. Bring a mat or \$12 mats available.

"In 10 sessions you will feel the difference, in 20 you will see the difference, and in 30 you will have a new body." Joseph Pilates

To register contact Narrelle 021 2673676

Te Ahu a Turanga Update

placed over the bridge, followed by line marking.

Over the river at Eco-Viaduct Bridge, the team has installed the expansion joints and are now adding balustrades (handrails).

Construction of the pavements (road surface) is progressing well, with about 98% of the highway now covered with at least two layers of asphalt. About 30% has received the final surface layer, with all pavements on track to be completed by early April.

Good progress is also being made on the Shared Use Path, 30% of which is now sealed.

Over the next three months, both roundabouts will be completed and connected to the existing roads near Woodville and Ashhurst.

While construction teams continue

getting the road ready for opening, the landscaping teams will be completing planting the remaining 300,000 plants still to go in the ground.

They'll also be creating the new Gateway Park, a recreational area near Parahaki Bridge that will also serve as the carpark for visitors to Te Āpiti - Manawatū Gorge.

It's going to be an exciting year for the highway, and we look forward to sharing the progress over the final few months of the project.

More information

For more information about the project, head to www.nzta.govt.nz/projects/te-ahu-a-turanga/ or visit the Ashhurst Library or the Visitor's Centre at our Project Office for the latest flyover, project updates and the Drive the Highway simulator.

Grant Kauri—New Zealand Transport Agency

Ashhurst Library

Hi everyone, we hope you have had a great start to the year and had some wonderful holiday time. We are currently planning for 2025 and hope to have many special events throughout the year.

Ross will be away for most of February, so Jill is in charge of the place, she's going to love that.

Summer Reading 2024-25

A huge well done to kids and parents for their work on the Summer Reading and iRead programmes over the holidays. It was great fun with our book chats, and we hope everyone involved enjoyed the experience.

Ashhurst Elevenses

First session for 2025—Friday, 7th February.

Come along every Friday during term time for a cuppa and a friendly chat. Everybody is welcome! There will even be tea, coffee and the odd biscuit provided, but if you want to bring along some home baking, you are very welcome.

Ashhurst Village Valley Centre Bookings

We have bookings flooding in for the Village Valley Centre for 2025. If you have an upcoming event and would like to use the facility, please get in touch with us as soon as you can.

Ashhurst Mighty Kids

First Session for 2025 Wednesday, 5th February—10.30 am.

Ashhurst Mighty Kids is our preschool programme of stories, songs and crafts. As ever, we hope to be able to have special guests throughout the year and look forward to another fun year.

Wednesday, 5th February 10.30am

Wednesday, 19th February 10.30am

Ashhurst Library Facebook

Just a reminder that if you want to keep up to date with all our latest news, events or announcements, just visit us at <https://www.facebook.com/AshhurstLibrary> and click "Like".

Ross Meads—Ashhurst Librarian



Always Looking After the Locals
Village Four Square and Lotto

**All You Need!**

- ◆ Groceries
- ◆ Fresh Produce /Meat
- ◆ Magazines,
- ◆ DVDs,
- ◆ Beer/Wine,
- ◆ LPG Gas Swap/New Bottles
- ◆ Lotto

Ashhurst Medicine Depot**Hours**

Monday—Friday: 7.00am—8.00pm

Saturday: 7.30am—8.00pm

Sunday: 8.00am—8.00pm

Public Holidays: 8.00am—8.00pm

Pravin & Padmini Patel welcome you at

141 Cambridge Avenue, Ashhurst

Phone: 326 8014



**The Bottle-O
Ashhurst**

Real Locals, Real Value

Open 7 Days

62 Cambridge Avenue, Ashhurst

06 777 5119

tboashhurst@gmail.com

Like us on Facebook

Ashhurst Pohangina Football Club

The soccer season kicks off again this year with registrations opening on 19th February for all children aged two-thirteen years old.

2024 saw the club grow to over 100 players and eleven Teams and we hope to continue to grow this with the support of the community. As with any club we are always grateful for anyone that wants to join our Committee or become a Coach/Manager of a team.

The overall strategic vision for the club is to allow every child the opportunity to play soccer, so the committee work tirelessly to raise funds so that we can keep fees as low as possible. 2025 will see the membership fee *reduce* by 15%; yes that's right, reduce in a time where everything is going up. We provide free uniforms to all members and a boot swap facility. We also make special exemptions for struggling families to ensure the fee isn't a barrier for their child to play.

We have players from schools all over the region including Ashhurst, Hiwinui, Colyton, Milson, Taonui, Awahou, Woodville, Parkland, Whakaronga, as well as the largest girls membership with three all girl teams last season

Our support from the Ashhurst Pohangina Lions and local Church is very much appreciated and goes a long way to helping the club. We are currently looking for some help from a lovely local person to sew some new corner flags and local businesses as team sponsors \$350 each. Last year we had team sponsorship from Busy Bee Cleaners, DL Tree Services, Brownell Contracting, and Blair Alabaster at Property Brokers.

Unfortunately, we do face some challenging times ahead in trying to protect our local club with Central Football continuing to make changes to wipe out local clubs. Their latest is to move all Rep teams to be managed by two clubs. So basically, if you wish for your child to be considered for a Rep team then they will need to play for Marist or United. What this will potentially mean is that all our top players will end up moving away from the local Ashhurst club along with other players that at least want that opportunity leaving us with a decreased membership pool and unable to make enough numbers for each grade. I for one will do everything I can, not to support this initiative and encourage our members to remain with the club.

This is an attempt by Central football to continue to limit their *paid* employment jobs by not having to coach Rep teams and limiting the number of clubs in region. Last year we saw a number of club mergers but we want to protect the synergies that a local club can provide for the community.

Registrations open 19th February. If you would like to register, please like us on Facebook (Ashhurst Pohangina Football Club) or email us at ashhurstjuniorfc@gmail.com

Coaches and Managers will receive a free registration.

Registration will be \$60 per child and a Maximum of \$120 for the whole family.

Thank you.

Ashhurst Pohangina Football Club Committee

Ashhurst Bowling Club

So many Championships have been played since my last report. Now that Summer appears to have arrived the rest of the busy programme can hopefully be played out.

But first some info about Twilight Bowls this season. Each Wednesday from February 5th to March 12th at 6.00 pm the Ashhurst Bowling Green is the place to be. Names in by 5.45 and

Continued on next page

Anglican Parish of Pohangina

St Mary Magdalene's Church, Ashhurst
8.00 am First Sunday of the Month
10.00 am every Sunday

St Bartholomew's Church, Komako

10.00 am 2nd, 4th and 5th Sundays.
Priest—Rev Pam Barnett. Contact the Parish office for further information:
Phone 326 8543 or

Email: info@parishofpohangina.net

www.parishofpohangina.net

St Mary Magdalene Church—Office Hours (subject to change at short notice): Monday: closed, Tuesday: closed Wednesday: 9.30am-3.30pm Thursday: closed Friday: 1.00pm-3.00pm

Ashhurst Pohangina Squash Club

Club night is Monday, from 6.00 pm. Come along and give squash a go! All members and newcomers welcome.

Courts are located at the rear of the Village Valley Centre on Guildford Street

Contact Braydon on 027 390 5611, ashpohsquashclub@inspire.net.nz, or find us on Facebook.

Ashhurst Pohangina Lions

The Ashhurst Pohangina Lions meet every second Thursday of the month at the R.S.A. Clubrooms at 6.30 pm. This established and friendly Lions Club is community oriented.

Contacts:

Jack Zwart (President) 326 8958
standishzwart@gmail.com

Brent Besley (Secretary) 329 4891

brent.liz@inspire.net.nz

Mike Forlong (Memberships) 329 4741

forlong@inspire.net.nz

Ashhurst Music Club

Live original music in your back yard

Our club is open to all ages and skill levels. Monthly meetings are about to start so keep watch on the Facebook page and in the Village Voice.

Contact kiwifieldcrew@inspire.net.nz or phone Grant 027 432 7648

Pohangina Rubbish Collection

Rubbish is collected every Monday. Bags out by 7.30am



Come and see the team at Kauri Physio for all your ACC and non ACC injuries

If you are unsure please email and we will advise whether physio is the right choice for you.

619 Featherstone Street,
Palmerston North
Phone: 06 357 4424
Tamsin.mafi@kaurihealthcare.nz

KAURI
PHYSIO

GRAEME BILSLAND PAINTERS

M: 027 581 2510 P: 06 357 3009 E: bilsland@inspire.net.nz

PO Box 20017, Palmerston North 4448



Kids 'n Motion

Now in its 21st year of providing music and movement for 0 - 5year olds within Ashhurst and the surrounding community.

Every Friday 9.45am-11.15am during school terms at the Village and Valley Centre, Guildford Street, Ashhurst. Cost: Gold coin donation.

Contact: Cherie O'Leary, Ph: 326 9688 Check out our Facebook page and like us! Kids 'n Motion is such a great group to come along too—see you there!

Pohangina Yoga Classes

Mondays 6.00pm-7.00pm \$10 per class or \$50 for six classes. Suitable for beginners and those with more experience of yoga.

Contact Catherine: hauorayoga@gmail.com, 021 0270 4400, www.hauorayoga.co.nz, Facebook: Hauora Yoga

Pohangina Local Christian Radio

3ABN Radio is now broadcasting in Pohangina Township on 107.7FM. Offering lifestyle radio with a difference! Broadcast 24 Hours, 7 Days a week for the 'Best News Ever!'

www.3abn.org

Contact Rex 06 356 1141 for Free Bible Studies, Books and DVD's.

River Church

We meet at 131 Cambridge Avenue each Sunday at 10.00am. All welcome.

Pastors Dave and Kellie Ross. Phone 027 247 2179 or 328 4864 (evening)

www.riverchurch.nz



**HOMESTEAD
CATTERY**

*Skilled and caring local staff
with over 14 years experience*

31 Pohangina Road, Ashhurst
Viewing by appointment welcome

Ph: (06) 326 8064

www.homesteadcats.co.nz

Find us on fb.com/homesteadcats



Ashhurst Bowling Club

all you need is flat soled shoes. We play for about an hour, have prizegiving and then maybe a social get together at the R.S.A. If you are a complete novice or a newish player or even someone experienced at bowling, you are more than welcome. Plenty of help available for the newbies. \$2 entry fee.

We have welcomed some new members and they are really well into the opportunities and challenges associated with bowling. The Year 1 and 2 Singles saw lots of excellent play and congratulations to Lorraine who was the eventual winner. Tony R was runner up and the standard of play from all the newer players was really high.

Similarly, there were battles in the Year 1 to 8 Championships with the Singles won by Margaret and the Men by Wayne. The Pairs was won by Wayne and Moggy and the Womens by Donna and Jacqui. There were some really nail biting games to thoroughly entertain the supporters.

The Senior Mens Fours was won by Tony, Moggy, Pete and Mike and the Womens won by Margaret, Joyce, Margie and Donna. Fantastic games to watch, congratulations to all players.

Very recently we had the Nissan Triples, once again sponsored by Nissan Motors and as always, we thank our sponsors so very much. Without them these tournaments

could not happen. A full field and after four games the winners were Tony, Mike and Moggy from Ashhurst with Jill Eades team from Shannon second and another Ashhurst team Margaret, Max and Kevin third.

The BBQ Triples on December 27th was played on a fine afternoon with a full field of players out to have fun, maybe win a prize and enjoy the comradeship our club is well known for. We hugely thank a new sponsor—Ashhurst Valley Automotive who made this possible.

February sees a huge tournament—the Property Brokers 2-day Fours, on again. A full field of players from far and wide so keep the 8th and 9th free if you would like to come and watch some stunningly competitive bowling. Ashhurst Club is well known for its hospitality, great green and well-run tournaments that attract fabulous sponsors. A huge thank you to Emma.

Still a lot of bowls to be played and again remember the Twilight fun evenings starting on Wednesday February 5th. Looking forward to seeing new faces. Come and give it a go. Something new each week so it is not a “must” to lock in all six weeks if you can't make it. Any questions call or text on 027 283 6317.

May 2025 be a year of positives, lots of smiles and new experiences plus meeting new friends.

Adrienne Harding—Secretary.

Ashhurst Rainfall

97 mm of rain fell in November 2024, above the monthly long-term average of 88.9 mm.

Rain was recorded on 13 days, with the highest one-day rainfall of 24 mm on the 2nd of November.

The total rainfall for the period from January to November 2024 is now 1214 mm, which is above the long-term average for this period of 1031.3 mm.

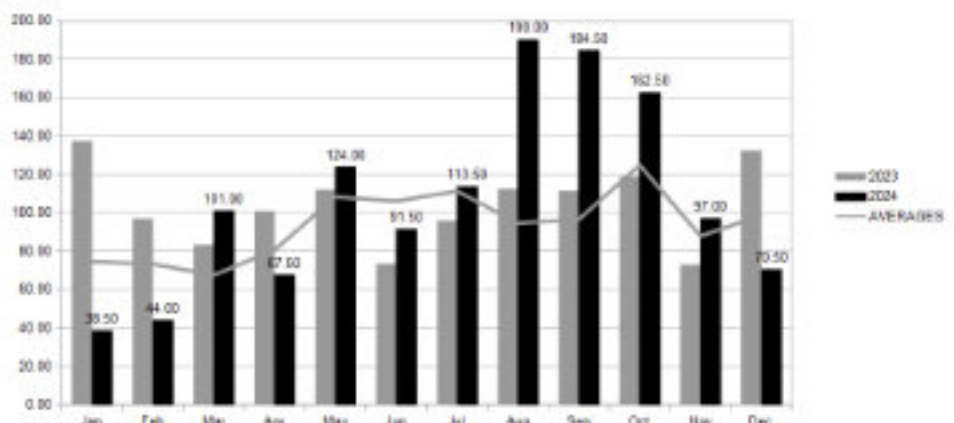
70.5 mm of rain fell in December

2024, below the monthly long-term average of 100.6 mm.

Rain was recorded on 12 days, with the highest one-day rainfall of 16 mm on the 31st of December.

The total rainfall for the period from January to December 2024 is now 1284.5 mm, which is above the long-term average for this period of 1131.9 mm.

Quang Mai



GLIMPSE

Kia ora and welcome to a toll-free New Year!

What a magnificent outcome! Ashhurst, along with the rest of us, received the best possible Christmas present when the proposed highway toll for the Manawatū Gorge road replacement - Te Ahu a Turanga Manawatū Tararua Highway was scrapped.

Village residents can feel justifiably proud of their sustained protest along with the calibre of their submissions, which when joined by other individuals, groups and communities, resulted in NZTA's proposal to toll the highway being dismissed. My congratulations to all the community advocates on both sides of the Ranges for their efforts in securing toll-free transport across the divide, and to the Government for listening to the wider community.

We can now wait out the next few short months for the project to be completed, the road opened and properly celebrated with a high level of anticipation. This will bring a new era for Ashhurst free of heavy traffic on its urban streets. The Gorge track and pathways should also attract visitors back, setting up Ashhurst for a great future.

Farewell to 2024

My thanks now to the community groups and individuals who helped make the last month or so of 2024 memorable.

Another successful Village Foodbank Drive was followed by a terrific Christmas Parade. Congratulations to the organisers of both, and to everyone who contributed their time and mahi so everything clicked into place.

The 'no-toll' news helped set up 2025 for the best possible start, while completion of council's scheduled summer road resealing programme before Christmas had Ashhurst streets in great shape to begin the New Year.

Kicking off 2025 in January was the Ashhurst-Pohangina Lions annual fundraising Smallholders Auction, while congratulations also go to everyone who took part in the Ashhurst Community Library's popular annual Summer Reading Programme. Each year here, Ashhurst kids and their parents bat well above the average.

Holiday Visitors

Once again, Ashhurst Domain with its camping ground and amenities has provided a happy haven for day-trippers and overnighters alike. This included dog-owners taking part in January's double dog show at the Manawatū Canine Centre. Both the Manawatū and the Whanganui Kennel Clubs held shows there over Wellington Anniversary Weekend. The Canine Centre which opened at the Domain in 1989, adds to the versatility of Ashhurst's wonderful community asset.

Also up and running is the new self-contained campervan/caravan public wastewater dump station on the recently refurbished Customs St, which will complement the camping ground's existing station.

On the Ball

While summer got off to the slowest of starts, the Ashhurst-Pohangina Rugby Football Club Stags have wasted no time in getting their pre-season training under way at Lincoln Park for the coming winter competition. For players of all ages and abilities, it's not too late to pull on a pair of boots and join the family-oriented club.

Council Consultations

Consultation on how Ashhurst Domain will be managed in the future will be open from 3 February to 4 March. The implications of the Government's 'Local Water Done Well' programme and what it means for the future of local water supply and dispersal comes up for community discussion shortly. Then in mid-March there will be a four-week window for submissions on our 2025-26 Annual Budget. Check the pncc.govt.nz website for details of how to have your say on these important matters.

Meet the Mayor

The second 'Meet the Mayor' session for 2025 will be on Tuesday, February 25 between 5 – 6pm at the Community Library. Please check the pncc.govt.nz website and Facebook page for confirmation. See you there.

Ngā mihi nui
Mayor Grant Smith JP



ASHHURST COMMUNITY LIBRARY

06 326 8646

Open days

Monday	2pm - 5pm
Tuesday - Friday	10am - 5pm
Saturday	10am - 1pm
Sunday	Closed

Access the full range of library digital resources at: citylibrary.pncc.govt.nz

SPLASHHURST! COMMUNITY POOL

06 350 0849

Normal hours

Tuesday - Friday	6am - 9am + 1pm - 7pm during school term 6am - 7pm during school holidays
Saturday	8am - 6pm
Sunday - Monday	Closed

clmz.co.nz/splashhurst

ASHHURST RUBBISH + RECYCLING

Rubbish bag and bin collection
 Tuesday morning. Bags out by 7.30am.

Recycling Bin	Glass Crate
11 February	4 February
25 February	18 February
11 March	4 March

MULGRAVE ST TRANSFER STATION

Recycling, green waste and general rubbish disposal.

Open days

Tuesday	1pm - 3pm
Saturday	10am - 4pm

Council's 24/7 contacts are **06 356 8199**, the **Council Facebook** page, pncc.govt.nz and the **Snap Send Solve** app to quickly report anything that needs attention or fixing.



Published by The Ashhurst Village Voice Society Inc.

Contacts

Editor: Llyvonne Barber

Phone: 022 051 6315

ashhurst.voice@gmail.com

PO Box 38, Ashhurst

Advertising: Grey Smith

Phone: 326 8075; 021 175 1726

rgcasmith@inspire.net.nz

Proof-reader: Vivienne Dalgleish

Letters to the Editor

Letters under 200 words are preferred.

The writer's contact details are required on all letters (not for publication), including address, email and phone number. We may need to contact you to clarify minor details.

The editor reserves the right to edit, abridge or decline letters or articles without explanation. Pen names or letters submitted elsewhere are not acceptable.

If supplying images, high resolution images are required. Please feel free to contact the editor if you are unable to email images.

We do not accept flyers or pamphlets for publication. Contents need to be provided as articles for publication.

Advertising Rates & Information

Articles and community notices are free. Adverts can vary from a few lines in the side column to a double business card size. Conditions apply. A 15% discount is offered if you pay in advance for a full year (11 issues). A business card size advert is to be 60mm by 100mm at 300dpi and costs \$50.

The cost varies proportionally for smaller and larger sized adverts.

For further information on advertising costs and payments please contact Grey Smith.

For technical details please contact the Editor. Contact details above.

Advertisers, we prefer that you supply files in pdf format. Please note that files supplied in .pdf format are unable to be adjusted from our end. Adverts can be created by the Editor for a small additional cost. These can be adjusted as required.

Village Voice Deadline

Deadline for articles and advertising submissions for the next edition is:

5.00 pm Thursday, 20th February 2025.

We cannot guarantee your submission will be included after this date.

MP Suze Redmayne

A belated Happy New Year. I hope everyone has had a safe and restful summer, and that 2025 is treating you well so far. My hardworking team and I have returned from our break over the holiday season, and it's great to be back in full swing as we prepare for another massive year both in the electorate and in Parliament.

2024 ended with good news for Ashhurst, as the Government decided not to toll the Manawatū Tararua Highway. This followed a robust consultation period, with locals and businesses around the region making their voices heard.

As your MP I actively engaged with many locals on the matter, and worked closely with Transport Minister Simeon Brown to ensure the wide range of local views were heard and considered. I want to thank Minister Brown for his work on this issue.

I'm so pleased with the outcome and for

the certainty it brings to our community, and to those surrounding us. It's great to see the Government's commitment to delivering for our region.

The new highway will be a game changer for our local community and for our wider region, enabling safer, quicker and easier travel for locals, businesses, and visitors alike. It represents not just improved connectivity but a vote of confidence in our region's future. I'm looking forward to everyone having access to a state-of-the-art highway from mid-2025.

If my team and I can assist you with any matters now or in the future, please don't hesitate to get in touch. We're here to support you and ensure that the voices of our communities continue to be heard. Email me at: Suze.RedmayneMP@parliament.govt.nz

You can also follow me on Facebook at: facebook.com/SuzeRedmayneMP

Ashhurst Clay Target Club

November

Our November shoot was the annual event to compete for the Mario Stella Memorial Cup and yes, Joby Stella won it.

High Gun: Chris Mooyman

Top Handicap winner: Mitch

December

A particularly awesome Xmas Shoot with an amazing turnout of around 8 squads, all very competitive to win hams. We also welcomed back for the day, Michael Romley. There was a 4-way shoot off for the 25 DTL because all four had shot 25.

25 DTL:

1st Joby Stella,

2nd Brendon Smith,

3rd Ken Simonsen

Top Handicap winner:

1st Jason Nitschke,

2nd Phil Brooks,

3rd Ken McDonald

Side-by-side:

1st Brad Turner,

2nd Seth Quigley,

3rd Jordan Finlayson

And once again the club welcomed the participation of club members from Western Lakes in Wairarapa. Plus a vanload and few other club members reciprocated with travelling to the Western Heights Xmas Shoot.

Karen Pawson—Secretary.

Samaritans



24 hours a day



Whether you are lonely, unhappy,
ready to end it all

WE ARE HERE TO LISTEN TO YOU

☎ 358 2442 or 0800 72 66 66 | www.samaritans.org.nz