



Ashhurst Village Voice

*Informing the communities of
Ashhurst & Pohangina*

ISSN 2324-5468 (Print)
ISSN 2324-5476 (Online)

August 2023

<https://recap.org.nz/village-voice>
Established 1997

Blankets for Ukraine

In the past year a number of ladies from the Ashhurst Craft Group have been knitting or crocheting blankets and other items to be sent to Eastern Europe as there is a specific need because of the conflict in Ukraine.

The group of ladies, that numbers no more than ten, have made eight blankets, as well as small jerseys, hats, scarves, mittens, slippers and toys.

Ruth Beale, Missions Without Borders—Operation Cover Up for the Manawatu (who is also part of this group) has collected the items and put them with the other goods from the Manawatu to be baled and sent to Auckland. From there they were to be put in a container to be shipped to Eastern Europe.

Manawatu and are now on a ship heading to the Netherlands.

Ruth wants to thank all those in Ashhurst who were involved, not only in the knitting of items but also in the sewing up, collating and bagging which was a massive job.

The Ashhurst Craft Group is run by Marianne Crawford and meets on Monday afternoons at 1.00pm and Wednesday mornings at 9.30am at River Church.

If you want to be involved please contact Marianne 027 627 2054 or Ruth 027 492 7178.

Donations of wool are always gratefully received.

Ruth Beale

Eight bales were sent from the



Contents

Ashhurst Senior Citizen Association	2
Continuing Support for the Foodbank	2
Smoke Alarms	2
Manawatu Rural Support Services	3
Churches of Ashhurst Combined Services	3
Ashhurst Senior Citizen Association	3
RECAP Update	3
Community Comment	4
Gorge Predator Trapping Report	6
Te Ahu A Turanga Update	7
Ashhurst School	8
Ashhurst Library	9
Ashhurst Clay Target Club	10
Ashhurst Rainfall	10
Palmerston North City Council	11
Ashhurst Indoor Bowls	12
Village Voice Contacts	12

**Deadline for
September Issue
Sunday, 20th August**

Letter from the Editor

Hello and welcome to the August Village Voice. I hope this finds you well.

We are heading towards the last part of winter; spring is getting closer. So, what to do in the garden this month?

Winter is the time to plant dormant fruit trees and shrubs.

In the vegetable garden we can continue planting hardy vegetables—beetroot, broccoli, cabbage, cauliflower, peas, onions, and spinach, as well hardy herbs. We can also plant asparagus, rhubarb, and strawberries.

It is also time to plan for the spring garden. If you have the ability to plant under cover/in a greenhouse, you can start planting summer vegetables. Now is also the time to start chitting potatoes for planting out after the danger of frost is gone—later in spring.

Remember to also plant flowers to feed beneficial insects that will pollinate your vegetables and/or predate on pest insects—one of the best ways to minimise the need to pesticide sprays.

Dianthus, calendula, larkspur, nigella, nemesia, penstemon, polyanthus, poppy, primula, viola, wallflower, and sweet peas can all be planted. Also, think of planting summer bulbs such as lilies and gladioli.

Llyvonne Barber—Editor

Continuing Support for the Food Bank

The last two months have been heart warming for all involved with the Food Bank, due to the success of a couple of events. Firstly, despite colder temperatures than last year, the Ladies' Night Out at the end of June raised \$700 on the night and donations in the fortnight following made a total of just over \$900! Thank you to Emma Tankersley and Property Brokers, Kellie Ross and the River Church team, the Ashhurst Fire Brigade and the Ashhurst Community Trust. A big thank you also goes to local businesses who took the time to participate—The Herb Farm, Steph's Crafts, Nicola Walker, Miss Phoenix Rose, Kelly's Kreations, Nana T Rockabilly Clothing, Monkey Business, Jorja's Garden, Helen Williams, The Mask Lady, The Lash Studio, Top Notch Heat Pump Cleaning and Top Notch Chimney Sweeping. Please show your appreciation when you can by supporting local.

Local identity Eddie Chapman is a long term supporter of the Food Bank, providing milk each week for a number of years. He recently celebrated his

100th Birthday and asked his guests to bring donations of non-perishable food, all of which filled up the large boot of my car! Such generosity has enabled me to use funds to purchase some red meat, which is a treat for our customers. Grateful thanks go to Eddie and all who attended the birthday celebrations—your kindness is much appreciated by the Food Bank customers.

Numbers of regular customers continue to increase but we are thrilled that these events and regular support from the community are still providing us with what they need to fill the gaps in their pantries. If you or anyone you know needs a helping hand, please come along to see what we can offer. The only requirement is that you live in Ashhurst or the Pohangina Valley and have a contact phone number. Our volunteers are friendly and non-judgemental.

The Food Bank is open on Thursdays from 2.30 pm—3.30 pm at the Methodist Hall in Bamfield Street.

Marianne Crawford

Smoke Alarms

Kia ora Ashhurst,

My name's Matt and I'm with the Ashhurst Volunteer Fire Brigade. Today I'll be talking about something very dear to my heart: smoke alarms.

I cannot overstate the importance of working smoke alarms. In the past 12 months there have been eight house or shed fires in the Ashhurst area so don't think this is a problem not affecting our community.

Smoke alarms are your first line of defense in a fire. When people are asleep, they cannot smell smoke, may not hear it and won't see it so smoke alarms are critical for early warning of a fire. It takes about three minutes for a house fire to become deadly and five minutes for it to be un-survivable.

Fire and Emergency New Zealand recommends photoelectric smoke alarms. They are far more effective than other alarms at detecting slow smouldering fires, which burn for hours before bursting into flames.

If you're unsure of placement or have any other concerns, help is at hand! Simply sign up at <https://www.fireandemergency.nz/hfsv/> or ring 0800 693 473 and we'll send a team of our local Firefighters around to put them up for you and give you other fire safety advice.

Thanks for your time and remember: smoke alarms save lives.

Matt Clark—Community Liaison Officer, Ashhurst Volunteer Fire Brigade

VILLA
JOINERY
Quality Kitchens
Designed & Manufactured
135 Mulgrave Street, Ashhurst, Palmerston North
P: 06 326 8849 F: 06 326 9745
E: sales@villajoinery.co.nz



Practical, friendly and affordable animal care

Phone: 06 326 9257

Mobile: 027 572 9353

Clinic Hours

Monday 8.30am - 5.00pm

Tuesday 8.30am - 5.00pm

Thursday 8.30am - 5.00pm

Saturday 9.00am - 12 noon

Wednesday & Friday evenings by appointment

141 Cambridge Avenue

Manawatu Rural Support Services

The Manawatu Rural Support Service would like to invite you for a cuppa with us! We alternate between St Bartholomews Church, Komako and County Fayre, Pohangina. You can find us there from 10.30 am—1.00 pm on the last Tuesday of the month. We look forward to seeing you there.

County Fayre
29th August
31st October
19th December
Komako
26th September
28th November

Churches of Ashhurst Combined Service

You are all welcome to join the Anglican, Methodist, Brethren, Catholic, and New Life Churches as we gather for a combined service.

131 Cambridge Avenue on 6th August, 2023.

Shared k̄ai to follow, please bring a plate to share.

Hosted by River Church Ashhurst,

We look forward to seeing you there!

Ashhurst Senior Citizens Association

Well! What can you say to that? With a packed hall, Mr Cynric Temple-Camp, Palmerston North's criminal pathologist, addressed our 49th Birthday celebration and was adjudged the best speaker we have ever had by one enthusiastic member. This is what makes our association a delightful place to be on the first Thursday in each month at 2.00 pm in the Methodist Hall in Bamfield Street. There you have it—all the details you

need to come and enjoy what we all love each month. Oh! And there's afternoon tea as well.

On the 6th August we will have budding musicians with their teacher, from St Peter's College, coming to give us a recital. Music to enjoy and music from future musicians to encourage us all. See you there then!

Terry Carr—Secretary

RECAP Update

A very quick update from RECAP.

9.00 pm at the Village Valley Centre.

RECAP Crop Swap

The next Crop Swap is Saturday, August 26th from 11.00 am—1.00 pm at the Ashhurst library. This is a free sharing event, where you don't need to give in order to take or vice versa. It's a great spot to bring the fruit from the trees you can't keep up with or to offload some of your glut or excess seedlings. Or just show up to collect the bounty from other gardens. There is often a lot of great k̄oro on various gardening topics, so bring your questions, too.

This is a civil defence event to help you prepare for a range of scenarios with Manawātū District Council and the Ashhurst Fire Department. With adverse weather events becoming more frequent and severe, this is a good opportunity to learn what you can do to help you get through.

This is a **free** event (although koha is appreciated). To register, please head to recap.org.nz. A light supper will be provided.

Food Gardening

RECAP are looking to offer a more personalised service in assisting

Ashhurst and Pohangina Emergency Preparedness Seminar.

Wednesday, September 6th, 6.00 pm—

Continued on next page

Firewood For Sale

Poplar or Pine available
Phone Ken Pratt 027 498 3718

JustOne Please

Super Kia ora, Thank you very much for the donation of pegs to the Safe house last month.

The item for the Safe House in August is Spreads.

You can drop these off at the Ashhurst Library. Contact Louise Bowe on 020 410 86128 for more information.

WE NEED YOUR HELP!



Calling all residents...

We're on a mission to make our area one of the safest, best prepared and friendliest in New Zealand! Whether you're a new or long-time resident, Palmerston North Neighbourhood Support is here to help you:

- Get to know your neighbours
- Receive emails + alerts that will keep you up-to-date
- Gain tips and resources, including from NZ Police
- Be able to give back or receive support
- And much much more, all for **FREE!**

To learn more or get involved, visit us online or contact:

Palmerston North Neighbourhood Support
Alison Jarden JP, Manager
06 355 4468 | 021 0248 4139
info@pncitysupport.com
www.pncitysupport.com



Creating safe, resilient and connected communities.

County Fayre at Pohangina

The creative, social and historical heart of the Pohangina Valley
Open

Sunday 1.00 pm—4.30 pm
Open Weekdays by arrangement
976 Finnis Road, Pohangina



- * Historic Maps and Photographs
- * Roll of Honour
- * Crafts and Produce
- * Devonshire Afternoon Tea/Coffee
- * Scones
- * Muffins
- * Ice Cream Sundaes
- * Milkshakes

Available for hire for small events
EFTPOS and **FREE WIFI** now available

Find us on Facebook at <https://www.facebook.com/CountyFayre>
or Email countyfayre@inspire.net.nz

We are a community based project run by volunteers

ASHHURST VILLAGE RADIO 87.9 FM

It's your Community FM Radio Station
broadcasting 24 hours each day, 7 days each week

Community notices are free.
Businesses 30 second advertisements \$5.00
Free training for volunteers joining the staff

Contact us:

ashhurstvillageradio@gmail.com
027 7525 0775

Awahou Pohangina Playgroup

'A lovely country playgroup' est. 1967.
Meet every Wednesday during term
time 9.30 am—12.00 pm.

Location: Awahou School Hall, 518
Pohangina East Valley Road.

Drop in for a visit, enjoy a cuppa,
morning tea and chat. Contact: Arna
Taylor—samnarna@outlook.com

Ashhurst Memorial R.S.A. Inc

74 Cambridge Avenue, Ashhurst.
Phone: 326 8296

Summer Hours

Sunday: 2.00 pm—6.00 pm

Monday 3.00 pm—6.00 pm

Tuesday: 3.00 pm—7.00 pm

Wednesday 3.00 pm—9.00 pm

Thursday: 2.00 pm—9.00 pm

Friday: 2.00 pm—11.59 pm

Saturday: 1.00 pm—9.00 pm

Manawatu Rangitikei Methodist Parish—Ashhurst, Bunnythorpe and Pohangina Congregation

Ashhurst Devonport Worship and
Community Centre

10.00 am 1st and 2nd Sundays

Pohangina Community Church

10.30 am 3rd Sunday

Contacts: Parish Office—323 4127

Heather Fairless—326 8355

Ashhurst Bowling Club

67 Stanford Street.

Season starts end of September
through to mid April.

If you would like more information on
lawn bowling, please call or email:
Adrienne Harding 326 8972/027 283
6317 ashhurstbowlingclub@gmail.com

Pohangina Rubbish Collection

Rubbish is collected every Monday.
Bags out by 7.30am.

RECAP Update

residents in creating their own small māra kai (food garden). This would involve us providing a basic garden bed frame, compost, seedlings and seeds along with some basic knowledge on how to keep it going. We would meet halfway in that you would need to collect items (sticks/twigs/leaves/grass clippings/kitchen waste/cardboard e.t.c) over a few weeks to help fill the beds, as well as doing some observations of your site for sun/wind/shade e.t.c. You would be expected to keep up with the maintenance (with some ongoing support). This is aimed at those who have done no or minimal gardening before, and would benefit from and use any fresh produce you grow. You would be growing easy care produce

like spinach/silverbeet/kale/lettuces/ spring onions/herbs to start. This is open to anyone (including renters as the frames can be removed easily if needed).

We'd like to start by offering two to see if this works and is a service wanted by the community. If you're keen please email us at info@recap.org.nz with a brief description of why you'd like to participate.

We have a workshop on seeds and how to use them and a workshop/ working bee to create a new composting area in the community garden to round out the events for the year. Dates To Be Confirmed.

Stay warm and well.

Chris Love

Community Comment

Most of the Ashhurst community can only watch the progress of Te Ahu a Turanga highway from external viewpoints. Members of the Community Liaison Group were recently granted a tour and inside view of roadworks and bridge construction. This group is representative of communities and Councils from both sides of the ranges, along with Iwi, Forest and Bird and other groups. They provide a conduit to inform their respective communities of activity and can feedback any concerns to the

construction team.

The scale of earthworks is immense as shown in the photo from the top of a 50 metre cutting through the hill opposite Ashhurst. Major earthwork activity is largely completed with activity pivoting to laying the solid foundations for the new road and work beginning on the roundabout connections at either end of the highway. The eco-viaduct over a slow slip in a nature sensitive area opposite

Continued on next page

**Talk to the specialist!**

Ashhurst's only real estate office,
Next to the lotto 4 square, Cambridge Avenue

Emma Tankersley Residential Sales Consultant
M 027 566 3778 E emma.t@pb.co.nz  PBAshhurst

Property Brokers Ltd Licensed REAA 2008

Property Brokers^B

pb.co.nz

your local ashhurst electrician

Knowles Electrical

Electrical •
Home Ventilation •
Security •
Heat Pumps •

Michael Knowles
registered electrician

M 022 024 8156

E michael@knowleselectrical.co.nz

W www.knowleselectrical.co.nz

no travel or service charges within the village mon-fri

For all your automotive needs

**VILLAGE VALLEY
AUTOMOTIVE Ltd**



- WOF
- TYRES
- REPAIRS
- BATTERIES
- SERVICING
- TRAILER HIRE
- SPIT ROAST HIRE
- AIR CON SERVICING
- WHEEL ALIGNMENTS

Ph 06 326 8239
WWW.VVA.CO.NZ

@ office@vva.co.nz

 54 Cambridge Ave, Ashhurst

Community Comment



Photo: Te Ahu a Turanga cutting to Ashhurst

the Gorge car park is taking shape with a number of bridge spans in place. Piers on the main river bridge continue to climb through scaffolding and will soon be ready for each bridge section to be laid, cantilevered from each pier bit by bit, to eventually bridge the gaps. This will be one of the largest bridges using this type of construction in the southern hemisphere and has had to overcome additional challenges of earthquake fault lines, earth movement and unexpected water pressures below ground.

Completion date for the project has slipped a little due to complications of Covid-19, labour limitations and weather constraints. The new highway is due for completion by the middle of 2025.

The local community will be aware of

the Manawatu River erosion in the past which swept away significant sections of the lower Ashhurst Domain. The risk of losing the bridge embankment as well, eventually triggered an expensive fix of rock groynes and willow planting funded by Palmerston North City Council, Horizons and

Waka Kotahi.

Recent flooding activity in the Pohangina River has created a new loop near the railway bridge and presented a new erosion challenge for the Council. It has already taken out a section of the riverside walkway and will continue to carve out territory from the grazed area of the lower Domain. Our local aerodrome (for model planes) is at risk again.

Flood protection for this section of the river is a Palmerston North City Council responsibility. Taming the river is not a simple fix, as many of the community suggestions of dumping concrete on the banks or bulldozing a new channel for the river are limited by rules, regulations and consent processes. Sadly, the river will continue to attack the land unless encouraged to do otherwise.

Continued on next page

Steady As You Go

Steady As You Go—A falls prevention programme. One hour of slow purposeful exercises for Seniors. Aimed at strengthening weakened leg muscles and helping to improve balance. \$2 per session. Otangaki Lodge, 69 Oxford Street, Ashhurst
Contact Age Concern phone 355 2832 for more details.

A.P.V. PLUMBING LTD

Kenny Allison

Registered Craftsman

Plumber/Gasfitter

- ☑ Free Quotes & Consultation
- ☑ Solar Installations
- ☑ Roofing
- ☑ Central Heating Installations
- ☑ All Work Guaranteed
- ☑ Competitive Rates

22 Mulgrave Street
Ashhurst

M: 027 241 3457

A/H: 326 9346

E: apvplumbing@xtra.co.nz

!!! NO JOB TOO BIG OR TOO SMALL !!!



TIME TO GET SOLD

Susan
WOOLNOUGH

“I believe in outstanding service and professionalism. I expect this service when I sell my own home, and I guarantee to give it to you, when I sell yours”.

Born and Bred in the Manawatu, with over **28 years real estate experience**, I'm here to help you get the **best result** for your real estate journey. I'm an Associate Member of the Real Estate Institute of New Zealand, previously managed an **award winning** office and owned offices in Palmerston North and Auckland.

For all your real estate needs, call me on 0800 GET SOLD

Susan Woolnough AREINZ Sales Consultant

M 021 481 855 | @getsoldwithsusan | E susan.woolnough@harcourts.co.nz

Harcourts Team Manawatu

Team Manawatu Realty Ltd Licensed REAA 2008

Top Notch Heat Pump Cleaning



Residential Heat Pumps

Regular Maintenance will keep your heat pump from using excessive electricity. Annual filter and coil cleaning will get your unit back to its' most efficient production of heating and cooling for your home. Avoid allergens and mould build up.

Find us on Facebook

Bookings and Further information 027 44 777 95

THE LASH STUDIO

For All Things Lashes and Brows

Victoria
027 270 4818
thelashstudio@xtra.co.nz

Monday - Thursday 6pm - 9pm
Saturday 9am - 5pm

Lash Extensions	Brow Lamination
- Classic Extensions	Henna Brow
- Hybrid Extensions	Brow Tint
Lash Lift	Brow Shape
Lash Tint	

@thelashstudio.ashurst

*Bookings can be done via my Facebook Page

Ashhurst Plunket

Every Monday and Tuesday.

Providing family health and wellbeing; child growth and development checks.

For more information call Plunket Area Office—0800 692 445 or 06 357 4844

B4 School Check

The B4 School Check is the final Well Child check.

Free for all four year old children. It includes a distance vision screening test, audiometry hearing test, height, weight, dental health and child development.

Contact 0800 692 445

Strength and Balance Ashhurst

Move it—or Lose it! Join our friendly group for a gentle, low impact exercise class, (no floor exercises) with an emphasis on fun. Optional—go for coffee afterwards.

Village Valley Centre, Monday mornings, 9.45 am—10.45 am.

Cost: \$8 per class.

Enquiries: Maria—phone 329 4166

Ashhurst Budgeting Service

Thursday 9.30 am—1.00 pm.

Operating from St Mary Magdalene Anglican Church, 67 Cambridge Street, Ashhurst.

For Appointments contact: Manawatu Home Budgeting Service. Phone: 358 2279; Cell: 0800-228 343.

River Church

We meet at 131 Cambridge Avenue each Sunday at 10.00 am. All welcome.

Pastors Dave and Kellie Ross. Phone 027 247 2179 or 328 4864 (evening)

www.riverchurch.nz

Ashhurst Foodbank

Open 2.30 pm—3.30 pm every Thursday. Methodist Church, Bamfield Street, Ashhurst.

Contact: Marianne 027 627 2054

Ashhurst Red Cross

Secondhand Shop, Cambridge Avenue.

Lots of clothing and shoes, books, toys kitchen and household goods in store.

Donations accepted when shop is open.

Monday—Thursday 12.30 am—2.30 pm
Friday 10.00am—1.00pm or when the flags are out.

Community Comment

Some good news for our local Pohangina cheesemakers of Cartwheel Creamery. Adrian and Jill Walcroft have been steadily raising their profile in artisan cheese competitions while producing a range of soft cheeses favoured by consumers. Our local boutique cheesemaker took out three coveted

trophies at the 20th annual New Zealand Champion of Cheese Awards at a presentation at Hamilton last month. Adrian was awarded the top prize of New Zealand Champion Cheesemaker based on judging of three different types of cheeses entered into the competition. Their soft-ripened cheese made from goat milk called Opiki Ma also won a couple of the main awards in the boutique class. Their cheeses are sold through farmer's markets, speciality shops, as well as our local suppliers in Ashhurst. Well done and congratulations.



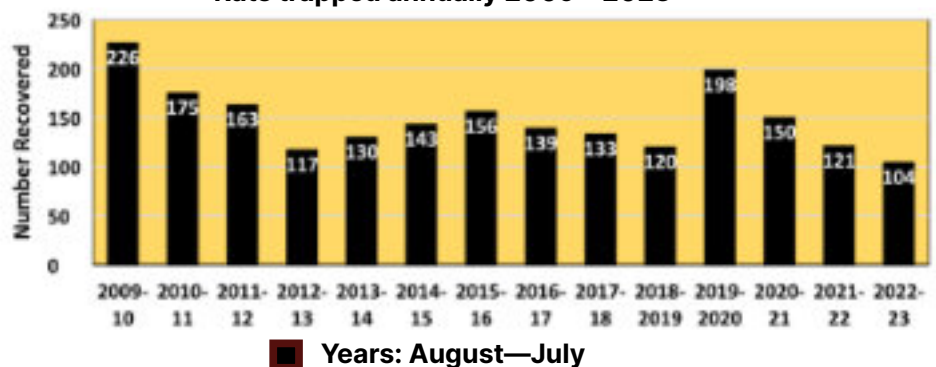
Photo: Domain path erodes near railway bridge

Gorge Predator Trapping Report

In July the Ashhurst Volunteer Stoat Trapping Group completed its 14th year of monitoring of the 109 traps that are located along the Manawatu Gorge Track. The total number of rats and mustelids (stoats and weasels) trapped now stands at 2292. In the latest year, we recovered 104 rats, five stoats, one mouse and 17 hedgehogs. The annual recovery for both rats and

stoats was at record low levels, with the previous low for rats being 117 (in the 2012-2013 year) and seven for stoats last year (see graphs below). DOC's increased poison baiting in the reserve probably contributed to the relatively low predator numbers. We trapped our first ferret during the previous year and were concerned that a population of ferrets may now

Rats trapped annually 2009—2023



Riverside Orchards

**For Your Fresh Fruit and Vegetables,
Fresh Baked Bread,
Cheese, Milk, Family Pies**

Daily delivery into Ashhurst and Palmerston North
Order online now at www.riversideshop.co.nz

1346 Napier Road (opp Petrol Station) Ashhurst
P: 06 326 8800 F: 06 326 8750. E: sales@riversideshop.co.nz

O'LEARY TREE SERVICES LTD

Craig O'Leary

Dip. Hort/Arb. Certs, Trade Cert. Hort.
30 Years Experience

**Tree Removal & Trimming
Pruning, Hedge Trimming**

P. 06 326 9688 M. 027 672 7747

Gorge Predator Trapping Report

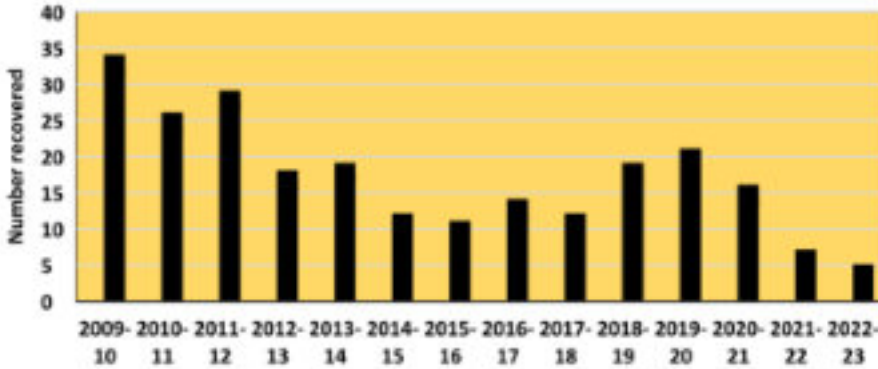
exist in the Gorge Reserve. However, no further ferrets have been recovered, so that may have been an isolated occurrence.

The Nikau Loop Track, that includes the first 1.7 kilometres of our trapping line, is still very popular with walkers and runners, but users at this time of year are advised to wear suitable

footwear because muddy patches are expanding and becoming more numerous. A bonus for visitors is that the rapid construction of Waka Kotahi's spectacular new bridge across the Manawatu River is best observed from the start of the track.

Mike Shepherd

Stoats trapped annually 2009—2023



■ Years: August—July

Te Ahu a Turanga Highway Update

Despite the wet weather having truly set in for winter, our site remains extremely busy with many different construction teams on the go.

Our earthworks programme is nearing completion, with 5.8 million cubic metres of earth moved to date, which leaves about 400,000 to go.

This final stretch through Zone 3, at the top of the project, is proving to be challenging due to the wet weather

hampering progress. The material in this area is extremely wet, however we're still on track to finish bulk earthworks by spring.

The construction of pavements—which is the part of the road surface that traffic goes on—continues through Fill 9.

This section of the project—which

Continued on next page

261 Fearless Club NZ—Ashhurst

Women's only running group. Non-competitive, non-judgemental, no woman is left behind!

Every Monday during term time, 6.00 pm—7.00 pm

Meet at the Ashhurst Squash Club

Email: 261clubnzashhurst@gmail.com or phone Sarah on 027 460 6729

Ashhurst Yoga Classes

Gentle beginner to intermediate yoga classes are on every Wednesday during school term time, 9.15 am—10.00 am at the Village Valley Centre.

Cost is \$8.50 and bring your yoga mat.

Working to your own level we focus on mindfulness, building and maintaining strength and flexibility—you don't need to have either to start yoga!

Introducing a new class on the first Wednesday of every month—Chair Yoga, suitable for all levels, especially those with limited lower body mobility or balance, a perfect opportunity to start yoga!

Phone or Text Vanessa: 027 243 0187 or email vlbphotography@inspire.net.nz, or visit www.vlbphotography.co.nz.

or visit www.vlbphotography.co.nz.

Matwork Pilates Sessions

Tuesdays at 6.00pm—55 minutes. Centennial Room at the Village Valley Centre.

Free first session. Bring a mat or \$12 mats available.

"In 10 sessions you will feel the difference, in 20 you will see the difference, and in 30 you will have a new body." Joseph Pilates

To register contact Narrelle 021 2673676



Ashhurst's LANDSCAPE SUPPLY YARD

- ✓ Compost
- ✓ Bark Nuggets
- ✓ Basecourse
- ✓ Builders Mix
- ✓ Nova Coil
- ✓ Weedmat
- ✓ Concrete/Mortar/Cement Bags 20kg
- ✓ Mulch
- ✓ Top Soil
- ✓ Washed Stone
- ✓ Sand 3 & 4mm
- ✓ Pea Straw
- ✓ Slimline Water Tanks

Contact: Greg
027 557 8809

greg@manawatucontracting.com

145 Mulgrave Street, Ashhurst
just along from the PNCC Recycling Centre

HOME DELIVERIES AND BULK DELIVERIES AVAILABLE



Your Ashhurst Property Specialist

If you are thinking about selling call me now so we can talk about your property.



Peter Colville

021 474 557

peter.colville@ljhookerpn.co.nz

Peter Colville - LJHooker Palmerston North

Ashhurst Clay Target Club (claybird shooting)

Meets the last Sunday of every month from 9.30 am at 651 Valley Road. Anyone welcome to join us
Queries: Ken Simonsen,
Phone: 329-4800

Ashhurst and District Senior Citizens Association Inc

Meet on the first Thursday of each month in the Methodist Church Hall, Bamfield Street, at 2.00pm. We invite you to come along and enjoy an afternoon of friendship and entertainment.

Contact: Terry Carr, 326 8074

Local Justices of the Peace

Mrs AK Rutherford—Available by appointment—027 404 8551

Mr F Saua
Pohangina Road RD 14—029 254 3206

Mr JC Culling
Pohangina Road—329 4825

J Wakeford
Hiwinui—022 319 0434

Ashhurst Music Club

Live original music in your back yard
Our club is open to all ages and skill levels. Monthly meetings are about to start so keep watch on the Facebook page and in the Village Voice.

Contact kiwifieldcrew@inspire.net.nz or phone Grant 027 432 7648

Te Ahu a Turanga Highway Update

you can see from Ashhurst and the surrounding areas—is really looking like a road now with the initial layers of aggregate being built up.

While rain is bad for earthworks, it's great for plants. Our landscaping teams are welcoming the wet weather as they continue towards their goal of putting 420,000 native plants in the ground this year.

So far, they've planted 190,000 trees and shrubs, many of which are next to parts of the highway where earthworks are completed.

It's awesome to see thousands of new plants next to the highway, which were barren just a few months ago.

Progress continues to be made on our structures, with Pier 2 at Parahaki Bridge over the Manawatū River now complete. Pier 3 is also nearing completion.

On Pier 1, preparations are underway for the form traveller to be erected in August. This temporary structure sits on top of the pier and allows the box girder "superstructure" (the part of the bridge that the road goes on) to be constructed in segments out from the pier.

Over the river at Eco-Viaduct, more

beams continue to arrive with 24 now in place on the piers.

The concrete panels for the bridge deck have started to arrive and installation of these will begin in August.

At Managamania Bridge at the Woodville end of the project, teams are working on the construction of the bridge abutments. Once these are completed, the concrete bridge beams can be installed later in the year.

At the western end, the new local road is now open for people driving the short section of Napier Road to get to Te Āpiti—Manawatū Gorge. This road provides access to the Western Gateway Park, which will become the main western access point for the Te Āpiti—Manawatū Gorge walk once the road opens.

For more information about the project, head to or visit the Ashhurst Library or the Visitors Centre at our Project Office for the latest flyover, project updates and the Drive the Highway simulator.

Grant Kauri—Waka Kotahi New Zealand Transport Agency

Ashhurst School

Welcome back to all of our tamariki and whānau for Term 3. Hopefully everyone had a great Term break. A big welcome to all of our new tamariki, whānau and teachers who are new to our kura this term. We are looking forward to another busy and exciting term with lots of events and activities happening.

Ki o rahi (Year 7-8 Winners!!)

Our school worked hard on our Kī-o-Rahi skills through Term 2 with the assistance of Pā Chris from Rangitane, Pā Jayden and Pā Andre. We entered one Year 5—6 team and two Year 7—8

teams in the tournament.

Our teams performed really well with our Year 5—6 team finishing 4th from 26 schools entered and one of our Year



Continued on next page



Always Looking After the Locals
Village Four Square and Lotto



All You Need!

- ◆ Groceries
- ◆ Fresh Produce /Meat
- ◆ Magazines,
- ◆ DVDs,
- ◆ Beer/Wine,
- ◆ LPG Gas Swap/New Bottles
- ◆ Lotto

Ashhurst Medicine Depot

Hours

Monday—Friday: 7.00am—8.00pm

Saturday: 7.30am—8.00pm

Sunday: 8.00am—8.00pm

Public Holidays: 8.00am—8.00pm

Pravin & Padmini Patel welcome you at

141 Cambridge Avenue, Ashhurst

Phone: 326 8014



...your local fencing contractors...

Contact us now to talk about your rural & lifestyle fencing requirements

hello.hansenfencing@gmail.com 027 357 3960

Ashhurst School

7—8 teams performing really well in their pool. Special thanks to the second Year 7—8 team for helping Team One during their training. Without them they wouldn't have been able to perform the way they did. The highlight does have to go to our intermediate champion team that won their semi final against Monrad and then the final against Ross Int. Congrats to all our players and thanks to Pā Chris, Pā Jayden and Pā Andre.

Pae Tamariki

Our school should be extremely proud of the students who represented Ashhurst School at Pae Tamariki this year. This is an event where schools from all over the region come together as part of a kapa haka festival.

Our students performed so well. I would like to thank our tutors Whaea Tūrehu and Pā Anaru for all of their time, effort and energy getting our students

ready. Also to Pā Scott and Pā Kyle for all of their help.

Farewell

At the end of Term 2 we farewelled



Miss Alicia Schreiber. She has taken leave to go overseas on a teaching holiday for the next 18 months. Alicia has been at our school for the past 6 years. She recently stood down from her team leader position. Alicia and I worked together when I was a principal in Taranaki. We wish her all the best and a safe journey.

Heath Chittenden—Principal

Ashhurst Library

Hi everyone, thank you to everyone for their support and attendance at our holiday programme, it was great fun.

Christmas Parade and Market Committee

We recently had an open night for people interested in being involved with the Ashhurst Christmas committee, thank you to all those who attended. We are sure you will be seeing information about this year's parade and market over the next few weeks.

Ashhurst Mighty Kids

Ashhurst Mighty Kids is our preschool programme of stories, songs and crafts. As ever, we hope to be able to have special guests throughout the term

Wednesday, 16th August—10.30 am
Wednesday, 30th August—10.30 am

Manawatu Home Budgeting Service

We are thrilled to be in partnership with Manawatu Home Budgeting

Service who are conducting budget sessions in our library on Thursday or you can make an appointment in their Palmerston North office. If you would like to talk to their wonderful staff or need some excellent budgetary advice and guidance, please let us know.

Karu Kanakana

We are very happy to have Karu Kanakana sessions taken by our good friend Emere who will bring storytelling, games, waiata and fun for all the whānau. This is a bilingual session for preschoolers and their kaitiaki (caregivers).

Nau mai, haere mai, whakatau mai rā!

Proudly supported by Pascal Street Community Trust.

Tuesday, 8th August 10.30 am
Tuesday, 22nd August 10.30 am

Ashhurst Library Facebook

Just a reminder that if you want to

Continued on next page

Anglican Parish of Pohangina

St Mary Magdalene's Church, Ashhurst
8.00 am First Sunday of the Month
10.00 am every Sunday

St Bartholomew's Church, Komako

10.00 am 2nd, 4th and 5th Sundays.
Priests—Rev Pam Barnett. Contact the Parish office for further information:

Phone 326 8543 or

Email: info@parishofpohangina.net

www.parishofpohangina.net

St Mary Magdalene Church—Office Hours (subject to change at short notice): Monday: closed,
Tuesday: 2.00 pm—5.00 pm
Wednesday: 2.00 pm—4.30 pm
Thursday: 2.00 pm—5.00 pm
Friday: 2.00 pm—5.00 pm

Ashhurst Pohangina Squash Club

Club night is Monday, from 6.00 pm. Come along and give squash a go! All members and newcomers welcome.

Courts are located at the rear of the Village Valley Centre on Guildford Street

Contact Braydon on 027 390 5611, ashpohsquashclub@inspire.net.nz, or find us on Facebook.

Ashhurst Pohangina Lions

The Ashhurst Pohangina Lions meet every second Thursday of the month at the R.S.A. Clubrooms at 6.30pm. This established and friendly Lions Club is community oriented.

Contacts:

Jack Zwart (President) 326 8958
standishzwart@gmail.com

Brent Besley (Secretary) 329 4891

brent.liz@inspire.net.nz

Mike Forlong (Memberships) 329 4741

forlong@inspire.net.nz

Ashhurst Genealogy

If you require assistance with Ashhurst History or Genealogy research.

Phone Heather Smith on 326 9989 or email whizjoy@inspire.net



Come and see the team at Kauri Physio for all your ACC and non ACC injuries

If you are unsure please email and we will advise whether physio is the right choice for you.

KAURI
PHYSIO

619 Featherstone Street,
Palmerston North
Phone: 06 357 4424
Tamsin.mafi@kaurihealthcare.nz

GRAEME BILSLAND PAINTERS

M: 027 581 2510 P: 06 357 3009 E: bilsland@inspire.net.nz

PO Box 20017, Palmerston North 4448



Kids 'n Motion

Now in its 21st year of providing music and movement for 0—5year olds within Ashhurst and the surrounding community.

Every Friday 9.45 am—11.15 am during school terms at the Village and Valley Centre, Guildford Street, Ashhurst. Cost: Gold coin donation.

Contact: Cherie O'Leary, Ph: 326 9688 Check out our Facebook page and like us! Kids 'n Motion is such a great group to come along too—see you there!

Pohangina Yoga Classes

Mondays 6.00 pm—7.00 pm \$10 per class or \$50 for six classes. Suitable for beginners and those with more experience of yoga.

Contact Catherine: hauorayoga@gmail.com, 021 0270 4400, www.hauorayoga.co.nz, Facebook: Hauora Yoga

Ashhurst Playcentre

Licensed Early Childhood Education Provider. Over 50 years in your community. Spaces now available for children 0—6 years.

Call 326 9270 or email ashhurst@playcentre.org.nz or Drop in for a free visit and a cuppa.

Tuesday and Thursday 9.00 am—1.00 pm. 118 Stanford Street, Ashhurst

Pohangina Local Christian Radio

3ABN Radio is now broadcasting in Pohangina Township on 107.7FM. Offering lifestyle radio with a difference! Broadcast 24 Hours, 7 Days a week for the 'Best News Ever!'

www.3abn.org
Contact Rex 06 356 1141 for Free Bible Studies, Books and DVD's.



HOMESTEAD CATTERY

Skilled and caring local staff with over 14 years experience

31 Pohangina Road, Ashhurst
Viewing by appointment welcome

Ph: (06) 326 8064
www.homesteadcats.co.nz
Find us on [fb.com/homesteadcats](https://www.facebook.com/homesteadcats)



Ashhurst Library

keep up to date with all our latest news, events or announcements, just visit us at <https://www.facebook.com/AshhurstLibrary> and click "Like".
Ross Meads—Ashhurst Library

Ashhurst Clay Target Club

A small June shoot with only four squads but some new faces turned up which is always great. Joby Stella took out the jackpot shoot and the Club 25 and Triples both had some impressive scores.

shoot off with Marty, Tony and Joby
Top Handicap: John
Triples:
Top Gun: (Simo) Ken Simonsen

Karen Pawson—Secretary

Results were as follows:

Club 25:
Top Gun: Craig Hocken after a



Photos: Left—Craig Hocken; Right—Ken Simonsen.

Ashhurst Rainfall

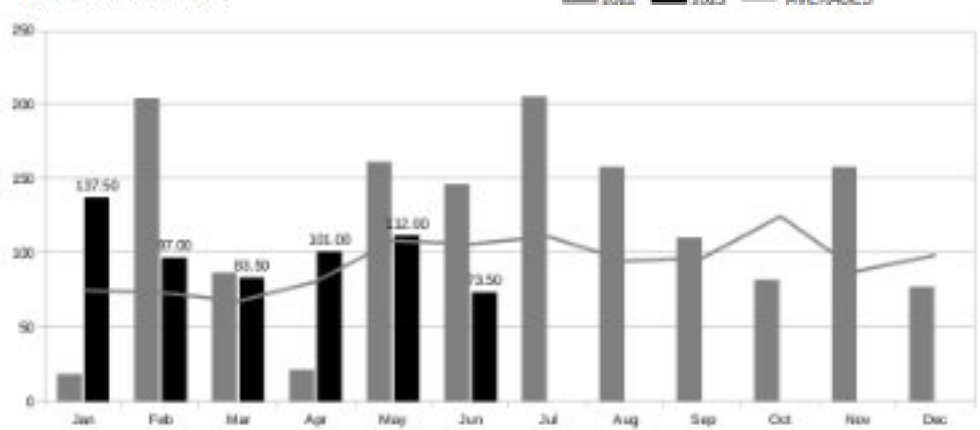
73.5 mm of rain fell in June 2023, below the monthly average of 107 mm.

The total annual rainfall is 604.5 mm. This is above the annual average of 511.6 mm.

Rain was recorded on 14 days with the highest one-day rainfall of 27 mm on the 17th of June 2023.

Mai Quang

Ashhurst Rainfall 2023



Samaritans

We are here

24 hours a day

Whether you are lonely, unhappy, ready to end it all

WE ARE HERE TO LISTEN TO YOU

358 2442 or 0800 72 66 66 | www.samaritans.org.nz

GLIMPSE

Mayor Grant Smith

Kia ora tātou

I can't quite believe how quickly the year is passing.

With mid-year school holidays and Matariki behind us, attention inevitably focuses on planning for the coming spring along with local arrangements associated with December's festive season.

Splashhurst!

I'm pleased the school holidays in Ashhurst went off with a splash as the Community Pool celebrated its fourth birthday during the July break.

Back in 2017, Council made the decision to purchase the Ashhurst School pool from the Ministry of Education for \$1 and spend an initial \$50,000 on upgrading the facility.

With CLM (Community Leisure Management), our provider for the Lido and Freyberg pools taking over its operation, Splashhurst reopened to the public in June 2019 and has been a real success story.

While there have been some additional structural and technical problems with the pool since, Council has committed to fixing any issues so Village residents can continue enjoying the water.

Unfortunately, operational and maintenance cost pressures have required an increase in the entry fee for the first time since the reopening.

In place since July 1, this increase doesn't reflect the full amount required to keep up with spiralling costs, and the balance is coming out of the general rates take.

The new pool charges are on the clmnz.co.nz/splashhurst website.

Christmas is Coming

After five years coordinating the Ashhurst Christmas Parade and Market, Laura and Viv have stood down, and the nucleus of a new organizing committee came together at a Community Library open night on July 25.

The new committee will be looking forward to support from the community and businesses for this highpoint on the local festive calendar, with Waka Kotahi already pledged to oversee traffic management for the event.

Restless River

Heavy rain and high river flows at the end of June caused damage to the riverbank at Ashhurst Domain.

This resulted in part of the riverside pathway between the rail and Ōtangati highway bridge collapsing into the Pohangina River near where the model aero club operates.

We're working with Horizons on the design to repair the damaged area before this summer.

The City Council has pressed Horizons Regional Council for urgency over repairs and erosion mitigation on the Domain side of the river bank - a space treasured by Ashhurst residents and visitors alike.

Civil Defence

With recent climatic events still front of mind, RECAP have organised an Emergency Preparedness Seminar for early September.

Involving reps from City Council and Manawātū District Council EMS teams, Ashhurst Fire Brigade and rural support services, the free Wednesday September 6 seminar includes a light supper, and is on at the Village Valley Centre from 6-9pm.

The aim of the seminar is to raise awareness of available emergency and support services in Ashhurst/Pohangina, and to have as many people as possible ready to 'get through' any future adverse event.

While free, a koha would be appreciated, with registration through recap.org.nz.

General Election

It's General Election year, and while Ashhurst has been part of Palmerston North City since 1989, it is not included in the Palmerston North general electorate.

Like Aokautere, Summerhill, Turitea, Linton Camp, Longburn, Bunnythorpe and Whakarongo, Ashhurst is part of the far-flung Rangitikei and Māori Te Tai Hauāuru electorates.

In order to have your say on election day in October, when you check your voter registration also take note of where the electoral boundaries fall.

This will determine the candidates you can vote for on Saturday October 14.

Civic Awards

A reminder to community groups that nominations for the 2023 Palmerston North Civic Awards close on Wednesday August 16.

Information about the requirements and process is on the pncc.govt.nz webpage.

Meet the Mayor

The August 'Meet the Mayor' session will be from 5 - 6pm at the Ashhurst Community Library on Tuesday August 29.

Any changes will be posted on the Council website and Facebook page.

Ngā mihi nui

Mayor Grant Smith JP



ASHHURST COMMUNITY LIBRARY

06 326 8646

Open days

Monday	2pm - 5pm
Tuesday - Friday	10am - 5pm
Saturday	10am - 1pm
Sunday	closed

Access the full range of library digital resources at: citylibrary.pncc.govt.nz

SPLASHHURST COMMUNITY POOL

06 350 0849

Normal hours

Tuesday - Friday	6am - 9.30am + 1pm - 7pm during school term 6am - 7pm during school holidays
Saturday	8am - 6pm
Sunday - Monday	closed

Splashhurst! online:
clmnz.co.nz/splashhurst

ASHHURST RUBBISH + RECYCLING

Rubbish bag collection Tuesday morning. Bags out by 7.30am.

Recycling Bin	Glass Crate
15 August	8 August
29 August	22 August
12 September	5 September

MULGRAVE ST TRANSFER STATION

Recycling, green waste and general rubbish disposal.

Open Days

Tuesday	1pm - 3pm
Saturday	10am - 4pm

Council's 24/7 contacts are **06 356 8199**, the **Council Facebook** page, and the **Snap Send Solve** app to quickly report anything that needs attention or fixing.



info@pncc.govt.nz / 06 356 8199 / pncc.govt.nz

Published by The Ashhurst Village Voice Society Inc.

Contacts

Editor: Llyvonne Barber

Phone: 022 051 6315

ashhurst.voice@gmail.com

PO Box 38, Ashhurst

Advertising: Grey Smith

Phone: 326 8075; 021 175 1726

rgcasmith@inspire.net.nz

Proof-reader: Grey Smith

Letters to the Editor

Letters under 200 words are preferred.

The writer's contact details are required on all letters (not for publication), including address, email and phone number. We may need to contact you to clarify minor details.

The editor reserves the right to edit, abridge or decline letters or articles without explanation. Pen names or letters submitted elsewhere are not acceptable.

If supplying images, high resolution images are required. Please feel free to contact the editor if you are unable to email images.

Advertising Rates & Information

Articles and community notices are free.

Adverts can vary from a few lines in the side column to a double business card size. Conditions apply. A 15% discount is offered if you pay in advance for a full year (11 issues). A business card size advert is to be 60mm by 100mm at 300dpi and costs \$50.

The cost varies proportionally for smaller and larger sized adverts.

For further information on advertising costs and payments please contact Grey Smith.

For technical details please contact the Editor. Contact details above.

Advertisers, we prefer that you supply files in pdf format. Please note that files supplied in .pdf format are unable to be adjusted from our end. Adverts can be created by the Editor for a small additional cost. These can be adjusted as required.

Village Voice Deadline

Deadline for articles and advertising submissions for the next edition is:

5.00 pm Sunday, 20th August.

We cannot guarantee your submission will be included after this date.

Ashhurst Indoor Bowls

Another busy month for our members.

Our Club Championship Pairs has been finalised with a very close final with Bruce Meyer and Sue Cowley defeating Cyril Kells and Max Grant. At the end of 9 ends the score was 7—3 to Bruce and Sue so very low scoring and a great battle. Well done to both teams.

On the 3rd of July we visited the Takaro Star Club in Palmerston North. Three games of the St Kilda format were played with Ashhurst winning on countback. These club visits are great fun and it is always very competitive between Ashhurst and Takaro Star.

On 13th July we had no club bowls as the Roding people required the hall. So we took ourselves off to 'The Garage' at Cobb n Co for a Club dinner. A great social evening.

The Championship Fours are about to be played and will be our last Championship for the season.

At Manawatu Centre level we had players in the Zone Finals being played in Masterton. The Mixed Pair of Bruce and Sarah Meyer were successful this year in winning the

Zone Final and now proceed to the National Final. The Mixed Fours team of Tim Veale, Bruce and Sarah Meyer and Anne-Marie Warrington also won their Zone Final and will be off to the Super Finals in Wellington. As they won the National title last year, they will be hoping to defend their title. Great going all and good bowling in Wellington.

Gloria Hall, Joyce Williams and Margaret Grant were successful at the St Brigids monthly tournament. Greg and Jennie Veale and Ety Wells took out the honours at the St Brigids Memorial Triples.

Several of our Ladies have been selected in the Manawatu Centre 8, with Gloria Hall, Jennie Veale and Marion McKenzie a close second to the strong North Wellington team.

Gloria, Jennie, Marion and Ety Wells then played Taranaki for a good win. Well done, Ladies.

We have Champion of Champion Triples, Singles and Pairs all being played over the next two weeks. Wishing all those bowlers involved "very good bowling".

Margaret Grant—Publicity



Photo: Zone winners of the Mixed Fours; Tim Veale, Bruce and Sarah Meyer and Anne-Marie Warrington.