



# Ashhurst Village Voice

## *Informing the communities of Ashhurst & Pohangina*

ISSN 2324-5468 (Print)  
ISSN 2324-5476 (Online)

August 2025

[https://recap.org.nz/village\\_voice](https://recap.org.nz/village_voice)  
Established 1997

### Community Comment

Protest action by Ashhurst residents has made the news again. The proposed loss of a viable school bus service for Ashhurst's secondary school students featured as a front page story in the Manawatu Standard. TV1 also filmed the protest action at the Ashhurst Domain car park and included interviews with concerned parents in its news broadcast.

According to Ministry of Education guidelines, a bus service is only required to transport students to and from the nearest school when there is no public transport available. The Horizons' public bus service cannot cope with 185 extra passengers, and they are unwilling to increase capacity without additional funding sources. The delayed decision from the Ministry is expected soon.

The new road or Te Ahu a Turanga remains popular, with only a trickle of traffic on the two alternative routes. Our volunteer firefighters will be pleased that the accident rate on the mountain crossing has reduced significantly. The shared path, which runs in parallel with the highway, remains popular with cyclists and walkers. Many people may be checking out the new trail, or perhaps they have transferred their route due to the current closure of the other Gorge walkways. The near end of the Gorge Walkway has a new access trail under construction to replace the old route which clung to the cliff edge and ducked under the road, before its steep climb up the edge of the stream.

With traffic now flowing on the new highway, NZTA will relinquish control and maintenance of the detour route over the Saddle Road and through Ashhurst streets. Tararua District Council are negotiating the exit conditions to ensure the road is fit for purpose

following its heavy traffic use. We hope Palmerston North City Council will also ensure streets such as Wyndham Street, which have been damaged by heavy trucks using this bypass, are repaired before they reclaim control and maintenance costs. Commuters are also concerned about the delays and dangers which now exist at the Cambridge Avenue and Napier Road intersection. NZTA do not envisage any further work on this intersection at present.

Frustrated residents of Wyndham Street have a petition in process to pressure the Council to make good on their promises to repair the street. Underground infrastructure to three waters disrupted their lives for months. A quick and dirty chip seal over these upgrades and road works has left pot-holes and water traps. Current status from Council suggests there is no budget or plans for a reasonable fix at present.

The new homes in Oxford Street for Kainga Ora are well on their way to completion. Roofing is complete and cladding almost finished ready for an internal fit out. We understand there will be a mix of two and three bedroom homes in the complex. The single storey dwellings are standard for Ashhurst, but the three sets of two-storey twin units have changed the domestic views in Ashhurst.

*Harvey Jones*



Photo: New Kainga Ora homes under construction in Oxford Street—Credit: Harvey Jones

### Contents

<b>Book Review: <i>The Book of Guilt</i></b>	<b>2</b>
<b>Ashhurst Volunteer Fire Brigade</b>	<b>2</b>
<b>Your Food Bank Needs You</b>	<b>2</b>
<b>Ashhurst Senior Citizens Association</b>	<b>2</b>
<b>Step Into the Orange Box</b>	<b>3</b>
<b>Ashhurst Memorial R.S.A.</b>	<b>3</b>
<b>Ashhurst Crafting Community</b>	<b>4</b>
<b>RECAP Update</b>	<b>5</b>
<b>County Fayre Update</b>	<b>6</b>
<b>Business Focus: Urbaness</b>	<b>6</b>
<b>Ashhurst Scouts</b>	<b>8</b>
<b>Business Focus: The Hair Lab and Co</b>	<b>8</b>
<b>Ashhurst Protest: Save Our School Buses</b>	<b>9</b>
<b>Ashhurst School</b>	<b>10</b>
<b>Ashhurst Library</b>	<b>10</b>
<b>Palmerston North City Council</b>	<b>11</b>
<b>Ashhurst Clay Target Club</b>	<b>12</b>
<b>Ashhurst Rainfall</b>	<b>12</b>
<b>Village Voice Contacts</b>	<b>12</b>

**Deadline for  
September Issue—  
Wednesday, 20th August**

## 2 Book Review: *The Book of Guilt*

*The Book of Guilt* by Catherine Chidgey

Mysterious, imaginative and disturbing, this is Catherine Chidgey's latest novel, and its very different to all her other award-winning novels.

Narrated by triplets Vincent, Lawrence and William (surnames uncertain) it is set in 1970's England and tells an astonishing story. The boys in the story are aged about 13 and currently live in one of the "Sycamore Homes" purchased by the Government after the War to accommodate "Special Children".

We gradually get to realise that these boys, and other children, are living in this home for a specific reason, of which we as readers are not made aware of. There are other similar homes in the area, the Margate one in particular, is very sought after by the children as it appears to have many great activities available to children.

They are living under very strict rules, with three Mothers - Mother Morning, Mother Afternoon and Mother Night. The Mothers take good care of them but they are not allowed outside the Home, have no contact with the outside world and no distractions such as bikes, toys games are allowed. They are heavily medicated, we don't know why or for what purpose. Are they guinea pigs for some insidious experimentation?

As the story unfolds, we are introduced to another child, a girl called Nancy, who is somehow connected to the boys but its not clear how and in what way. Nancy lives with her parents in their own home but something is wrong?

"The Book of Guilt" in the title is an actual book kept in the Home, for recording the boys' behaviour each day by the Mothers. Any bad behaviour is written down for future reference, especially bad dreams. All these records are overseen by Dr Roach, who visits the Home regularly to monitor the boys' health and any unseemly behaviour.

What does it all mean? The truth slowly unfolds as the reader learns more of the boys' family history. You will be hooked till the end, beautifully written and hard to put down.

**Robyn Dare**

## Ashhurst Volunteer Fire Brigade

This month I'll be talking about the humble but mighty smoke alarm! During my Home Fire Safety Visits I put a huge emphasis on smoke alarms for the simple fact that they save lives. Fire and Emergency recommends the photoelectric smoke alarm which uses a light beam, which when broken by smoke particles, triggers the alarm.

We can even install smoke alarms with pillow shakers and strobe lights for the hearing impaired too.

Having smoke alarms in your home is non-negotiable. Fires spread rapidly and smoke inhalation is a leading cause of death in house fires. Smoke alarms significantly increase survival odds by alerting you day or night. Fire and

Emergency recommends installing them in every bedroom and living areas and testing them monthly. Smoke alarms are a small investment for lifesaving protection.

Cost, effort or convenience isn't an excuse for not having them. I will come to your house and install them. Go to [fireandemergency.nz](http://fireandemergency.nz) or ring 0800 693 473 to book in a Home Fire Safety Visit. There's been a few fatal fires in our region lately and hearing "persons reported missing" is something as Firefighters we never want to hear. Please help us protect your loved ones.

**Matt Clark—Secretary  
Fire Risk Management Officer**

## Your Food Bank Needs You

Some of our wonderful volunteers have come to the end of their season at the Food Bank and we are now looking for others to take their place. If you would like to do some volunteer work and have some time available on a Thursday afternoon between 2.15 pm and 3.30 pm, please contact me. We would love to have you come to see what we do and how we do it so you can decide if this work is a good fit for you.

Some of our supplies have run out so if you would like to make a donation of food, the following is what we are in urgent need of at present: tinned vegetables (corn, peas, mushrooms, beetroot), rice (any sort), tinned fish, tins of black beans and chilli beans, desserts (jelly, mousse, creamed rice, custard powder), breakfast cereals (any kind), flour, sugar, baking powder, baking mixes, spreads (any type), sweet biscuits, toothpaste. This is an extensive

list so any amount, large or small, is very much appreciated.

Thank you to all our regular food donors—the Anglican Church, River Church and individual members of our community—and those who give monetary donations from time to time. We truly appreciate everything that is given and every effort is made to ensure that purchases get the best value for money.

Finally, we are very aware that everyone's finances are under pressure and if you could do with some help with your food budget, please come and see what we can do for you. Please also let me know if you are working and can't make it on a Thursday afternoon and, if there is enough demand, I will consider opening up at a different time.

**Marianne Crawford  
027 627 2054**

## Ashhurst Senior Citizen's Association

The July meeting of the Ashhurst Senior Citizens was our 51st birthday celebration. A good turnout of both members and visitors attended, great to see some new faces and visitors from other similar groups. Thank you for attending and we hope to see you again. Great entertainment was provided by The Spring Chicks who sang, danced, performed and generally entertained

everyone present. Again, a big thank you to The Spring Chicks.

Remember you do not have to be a senior to come along as we love to see people of all ages and backgrounds. You may meet some new people or catch up with some familiar faces, as well as enjoy a delicious afternoon tea. There are also

*Continued on next page*



**KITCHENS DESIGNED AND MANUFACTURED**

06 326 8849 sales@villajoinery.co.nz  
135 Mulgrave Street, Ashhurst, 4810, NZ

[villakitchens.co.nz](http://villakitchens.co.nz)



MIXED ANIMAL PRACTICE

Practical, friendly and affordable animal care

Phone: 06 326 9257

Mobile: 027 572 9353

Clinic Hours

Monday 8.30am - 5.00pm

Tuesday 8.30am - 5.00pm

Thursday 8.30am - 5.00pm

Saturday 9.00am - 12 noon

141 Cambridge Avenue



# Ashhurst Senior Citizen's Association

raffles and a sales table so you may win a prize or find a bargain.

We meet the first Thursday of the month at 2.00 pm in the Valley Village

centre. We look forward to seeing you or meeting you for the first time on the 7th August.

**Stephanie Madgwick—Secretary**

## Step Into the Orange Box

Step into the magical world of the orange box.

Coming to Pohangina Hall – 10th September at 6.30 pm. This is a free community event.

Pohangina Hall will come alive with colour, curiosity, and creativity this September as Arts on Tour NZ presents a truly enchanting performance: The Orange Box by Naranjarte – a remarkable Spanish puppet and circus theatre company.

Founded by Ana Lorite and Sergio Aguilar, Naranjarte has been captivating audiences across Europe since 2011. Now, for the first time, their unique blend of puppetry, juggling, and visual storytelling is coming to our very own Valley.

The Orange Box is a visually rich journey suitable for children and adults alike. It tells the tale of a small paper puppet stuck in a routine job in a packaging office. But when a map and a mysterious orange box appear, everything changes. What follows is a journey of imagination, courage, and transformation—a story that invites us all to think outside the box and



rediscover wonder.

Expect handmade puppets, mesmerising juggling, and a whimsical blend of circus artistry and storytelling. This is not just a show—it's a full sensory experience that will leave you smiling, pondering, and perhaps even dreaming a little differently.

After the performance, stick around for a special Q&A session where you can meet the puppets up close, chat with the performers, and learn more about the creative magic behind the scenes.

Don't miss this one-of-a-kind cultural event in the heart of the Valley. Bring your whānau, bring your friends—this is Pohangina Hall at its most magical.

## Ashhurst Memorial R.S.A.

Kia Ora everyone,

As the days grow shorter and the chill of winter truly sets in, I hope this report finds you all safe, warm, and in good spirits.

Winter can be a tough time, so please remember to look after yourselves and each other. Check on your neighbours, drive carefully on frosty mornings, and make sure your homes are snug and warm. Your safety and well-being are always our top priority here at the Ashhurst R.S.A.

Speaking of warmth, don't forget our fantastic Friday nights by the fire! It's been wonderful to see so many of you

gathering, enjoying the crackling fire, and sharing a laugh. We've got plenty of exciting raffles lined up, and the members draw promising some great prizes. More importantly, it's a fantastic opportunity to enjoy some good old-fashioned camaraderie and banter—the heart and soul of our R.S.A. community.

These evenings are a highlight of the week, and we'd love to see even more of you there. Come on down, grab a drink, and join in the fun. It's the perfect antidote to the winter blues!

### Coming events

- Every Tuesday, 7.00 pm Bingo.

*Continued on next page*

## JustOnePlease

Super kia ora. The Justoneplease item for the Safe House for May 2025 is **Long Life Milk**. Thank you to everyone for the donations so far this year. Kindest regards.

Contact Louise Bowe on 020 410 86128 for more information.

## Fruit Tree Services

Pruning, fertilising and spraying of fruit trees. Over 40 years experience. Phone Phil: 326 9366

## Relax Studio

Offers a range of relaxing massages. Facials using The Herb Farm products. Manis, pedis and much more. Book in and quote ASH15 for 15% off your first pamper. Open Monday - Saturday. 022 493 6510; [relax.rina@gmail.com](mailto:relax.rina@gmail.com) @ The Herb Farm.

## Dry Firewood

Gum \$140 per m3  
Mixed Pine Gum \$110 per m3  
Minimum order 2 cubic meters  
Free delivery Ashhurst.  
Tom 027 434 8700

## Village Voice Funding

The Village Voice has a circulation of 1880 and is delivered free to households in Ashhurst and the Pohangina Valley. The newsletter is run by a small volunteer incorporated society and funded solely by our loyal advertisers. Please support these community-minded businesses. If you wish to support this publication in any way, please refer to the back page and contact Grey Smith.

## Steady As You Go

Steady As You Go—A falls prevention programme. One hour of slow purposeful exercises for Seniors, aimed at strengthening weakened leg muscles and helping to improve balance. \$2 per session. Otangaki Lodge, 69 Oxford Street, Ashhurst  
Contact Age Concern phone 355 2832 for more details.

## herb farm | CAFE

Where tranquility meets family fun!

This summer, unwind at The Herb Farm. Enjoy a relaxing break in our café, then explore the gardens or let the kids have fun in the playground. Whether you're here for a peaceful stroll, something delicious from our café, or a little retail therapy, it's the perfect place to spend quality time with your loved ones and enjoy the beauty of nature.

86 GROVE ROAD, ASHHURST

PH 06-326 7479 | [herbfarm.co.nz](http://herbfarm.co.nz) | @herbfarmcafe



CAFE - GARDENS - SHOP - WORKSHOPS & EVENTS - FUNCTIONS

## County Fayre at Pohangina

The creative, social and historical heart of the Pohangina Valley

**Open: Sunday 1.00 pm—4.00 pm**

*except public holiday weekends*

Open Weekdays by arrangement

Available for hire for small events

976 Finnis Road, Pohangina

- \* Historic Maps and Photographs \* Roll of Honour \* Crafts and Produce \*
- \* Devonshire Afternoon Tea/Coffee \* Scones \* Muffins \* Ice Cream Sundaes \*
- \* Milkshakes \*



EFTPOS and FREE WIFI now available

Find us on Facebook at <https://www.facebook.com/CountyFayre> or Email [countyfayre@inspire.net.nz](mailto:countyfayre@inspire.net.nz)

*We are a community based project run by volunteers*

## Awahou Pohangina Playgroup

'A lovely country playgroup' est. 1967.  
Meet every Wednesday during term  
time 9.30am-12.00pm.

Location: Awahou School Hall, 518  
Pohangina East Valley Road.

Drop in for a visit, enjoy a cuppa,  
morning tea and chat. Contact: Arna  
Taylor—[samnarna@outlook.com](mailto:samnarna@outlook.com)

## Ashhurst Memorial R.S.A. Inc

74 Cambridge Avenue, Ashhurst.  
Phone: 326 8296

Monday 3.00 pm-6.00 pm

Tuesday 3.00 pm-7.00 pm

Wednesday 3.00 pm-10.00 pm

Thursday 3.00 pm-9.00 pm

Friday 3.00 pm-11.00 pm

Saturday 2.00 pm-7.00 pm

Sunday 3.00 pm-6.00 pm

## Manawatū Rangitikei Methodist Parish—Ashhurst, Bunnythorpe and Pohangina Congregation

Ashhurst Devonport Worship and  
Community Centre

10.30 am 1st Sunday each month

Pohangina Community Church

10.30 am 3rd Sunday

Contacts: John Brock 329 4834

## Ashhurst Bowling Club

67 Stanford Street.

New bowlers or anyone thinking about  
playing please either come along and  
have a go or get more info from  
Adrianne on 027 2836317.

## Ashhurst Memorial R.S.A.

- The Crafting group meets every  
Thursdays, 1.00 pm at the R.S.A.
- Casino Night, a joint event with the  
Rugby club, Saturday Night, 20th  
September at the R.S.A.

### Congratulations

- Hugh Akers who won a trip to  
Melbourne including airfares  
accommodation and spending  
money in our recent promotion.
- Two teams under Ashhurst R.S.A.

went to the R.S.A. National indoor  
bowls last weekend at Te Aroha and  
both teams qualified and ended up  
1st and 3rd.

- Recently the R.S.A. darts group have  
won National titles in the youth and  
open competitions.

Stay warm, stay safe, and I look  
forward to catching up with you all soon.

**Peter Knight—President**

## Ashhurst Crafting Community

We are a local knitting and crochet  
group set up early 2024 by local lady,  
Lorraine Fabish. Yes, this is yet another  
crafting group, however this group's  
point of differences are:

- Every item we make is donated to  
either a local school, kindergarten,  
kohanga, playcentre, health centre,  
charity—whoever needs our items,  
which are all crafted with love.
- There is no weekly cost to our  
crafters to meet.
- Everything is supplied if needed,  
from needles, to hooks to yarn—  
both wool, alpaca and acrylic  
blends.
- We have decades of experience  
among us, and there is always  
someone to teach you how to knit or  
crochet. We even have ladies who  
spin their own yarn (thanks Sally for  
your demo!).
- We are not all retired! Our ages  
range from nine through to "waaay

past 65 thank you".

We are fortunate to have a large core  
group of ladies ( no men have joined us  
yet!) who meet on Thursdays anytime  
from 1.00 pm-4.00 pm at our local  
Ashhurst Memorial R.S.A. (or the Bowling  
Club if our room is not available). These  
local groups kindly allow us the use of  
their space, without charge, and their  
support is greatly appreciated.

We enjoy sharing our knowledge, and  
skills and it is a great group to bounce  
ideas off, share techniques, while having  
a cuppa, and occasionally baking.

We have been very appreciative of the  
wool/yarn kindly donated by locals, and  
others who are aware of our group, and  
know what we quietly do for the  
community. Often when a house  
cleanout is happening, it is realised that  
a bag of wool, and sometimes unfinished  
knitting, could be made use of by us.

To date we have literally made

*Continued on next page*



**B**

## Talk to the specialist!

Ashhurst's only real estate office,  
Next to the lotto 4 square, Cambridge Avenue

**Emma Tankersley** Residential Sales Consultant  
M 027 566 3778 E [emma.t@pb.co.nz](mailto:emma.t@pb.co.nz) [f](#) PBAshhurst

Property Brokers Ltd Licensed REAA 2008

**Property Brokers<sup>B</sup>**

[pb.co.nz](http://pb.co.nz)

your local ashhurst electrician

## Knowles Electrical

Electrical •  
Home Ventilation •  
Security •  
Heat Pumps •

Michael Knowles  
registered electrician  
M 022 024 8156  
E [michael@knowleselectrical.co.nz](mailto:michael@knowleselectrical.co.nz)  
W [www.knowleselectrical.co.nz](http://www.knowleselectrical.co.nz)

**no travel or service charges within the village mon-fri**

For all your automotive needs

**VILLAGE VALLEY  
AUTOMOTIVE Ltd**



- WOF
- TYRES
- REPAIRS
- BATTERIES
- SERVICING
- TRAILER HIRE
- SPIT ROAST HIRE
- AIR CON SERVICING
- WHEEL ALIGNMENTS

**Ph 06 326 8239**  
**[www.vva.co.nz](http://www.vva.co.nz)**

@ [office@vva.co.nz](mailto:office@vva.co.nz) 📍 54 Cambridge Ave, Ashhurst



# Ashhurst Crafting Community

hundreds of slippers, hats, kids vests, knee rugs etc, with our latest project being our Veterans scarf project. There are samples of our scarves made to date, hanging in the Ashhurst Memorial R.S.A.

Please, if you are thinking of joining us, come on down, even just to sit and chat a while. You don't need to stay for the full three hours, as some ladies call in on their way to school/kindy pick-up, some on their way home from work. We always welcome new faces.

## RECAP Update

Kia ora koutou from the team at RECAP.

As part of the new Societies Act, all incorporated societies have to update their constitutional rules by April 2026. We are in the process of finalizing our RECAP constitution and will be holding a general meeting of RECAP members (and those who may wish to become a RECAP member) in September. More info to come.

Winter is sometimes a quiet time for us at RECAP. While we work on some exciting new workshops for the later part of the year (and 2026) I thought I'd give you all a brief overview/update on RECAP as a whole to show the scope of work we do in our community.

As of July 2025 RECAP provide the following services and maintain the following projects:

**McCrae's Bush:** this is an area of native bush/wetlands that has been looked after by a group of volunteers supported by RECAP for around six years. They hand weed to control the invasive plants in the area, advocate for the area to Palmerston North City Council and Horizons to ensure dead trees are cleared and walking tracks are well maintained and have replanted the area with natives. At present we have noticed an uptick of pests in the orchard/bush area. Palmerston North City Council have placed 20+ traps which they maintain; but in late 2024 and 2025 we have spent some time dedicated to involving surrounding residents in trapping efforts to support the health of both the natives and the orchard's fruit trees. If you are a neighbor to McCrae's and you would like to assist in pest control by having a trap or two on your property, please contact us: [info@recap.org.nz](mailto:info@recap.org.nz)

within McCrae's bush was planted in 2012 with mostly heritage trees (including apples, pears, figs, plums, peaches, hazelnuts and more). This functions primarily as a teaching orchard: we run pruning workshops where we offer the unique experience of getting hands on with the loppers and secateurs while being taught. Any produce in the orchard is free for the community to pick—we ask that you take only what you need and leave some for others.

**Ashhurst Library Garden:** The plantings around the library are looked after by a dedicated group of volunteers, and out back are fruit trees and vegetable beds. Please feel free to pick anything that is ready.

**Māra rongoā:** We began planting this garden (next to Ashhurst Health Care) in March 2024. This is filled with traditional Māori medicinal plants as well as other natives. There is still room and budget to plant more here and we are working on educational signage (similar to the domain) once these plants are more established.

**Sharing Shelf:** A space to gift/receive extra produce, shelf stable food and gardening items just outside the library (please do not leave anything that is not edible or plantable).

**Seed Library:** Within the Ashhurst library is our seed library. Anyone is free to take three packets of seeds per month (please write your name and seeds taken in the log book). Ngā mihi nui to Jo Smith who puts lots of time and love into keeping this looking beautiful and restocking it with seasonally appropriate seeds.

**Crop Swap:** The first Saturday of each month we host a Crop Swap in the Ashhurst Library between 11.00 am -

**Olsson Community Orchard:** This area

*Continued on next page*

## WE NEED YOUR HELP!



### Calling all residents...

We're on a mission to make our area one of the safest, best prepared and friendliest in New Zealand! Whether you're a new or long-time resident, Palmerston North Neighbourhood Support is here to help you:

- Get to know your neighbours
- Receive emails + alerts that will keep you up-to-date
- Gain tips and resources, including from NZ Police
- Be able to give back or receive support
- And much much more, all for FREE!

To learn more or get involved, visit us online or contact:

### Palmerston North Neighbourhood Support

Allison Jarden JP, Manager  
06 355 4468 | 021 0248 4139  
[info@pncitysupport.com](mailto:info@pncitysupport.com)  
[www.pncitysupport.com](http://www.pncitysupport.com)



Creating safe, resilient and connected communities.

## A.P.V. PLUMBING LTD

Kenny Allison

Registered Craftsman

Plumber/Gasfitter

- Free Quotes & Consultation
- Plumbing & Gas
- Central Heating Installations
- All Work Guaranteed
- Competitive Rates



22 Mulgrave Street  
Ashhurst

M: 027 241 3457

E: [apvplumbing@xtra.co.nz](mailto:apvplumbing@xtra.co.nz)

IF NO JOB TOO BIG OR TOO SMALL !!!

## Green Gals Gardening

Your local & reliable gardener



Contact me today  
for a free quote

027 882 5567

[greengardeningal@gmail.com](mailto:greengardeningal@gmail.com)

## ASHHURST VILLAGE RADIO 87.9 FM

It's your Community FM Radio Station  
broadcasting 24 hours each day, 7 days each week

Community notices are free.  
Businesses 30 second advertisements \$5.00  
Free training for volunteers joining the staff

Contact us:

[ashhurstvillageradio@gmail.com](mailto:ashhurstvillageradio@gmail.com)  
027 7525 0775

### Ashhurst Plunket

Tuesdays and Wednesdays by appointment only.

Contact [www.plunket.org.nz](http://www.plunket.org.nz), or 027 276 8145.

### B4 School Check

The B4 School Check is the final Well Child check.

Free for all four year old children. It includes a distance vision screening test, audiometry hearing test, height, weight, dental health and child development.

Contact 0800 692 445

### Strength and Balance Ashhurst

Move it—or Lose it! Join our friendly group for a gentle, low impact exercise class, (no floor exercises) with an emphasis on fun. Optional—go for coffee afterwards.

Village Valley Centre, Monday mornings, 9.45am-10.45am.

Cost: \$10 per class.

Enquiries: Maria—phone 329 4166

### Ashhurst Budgeting Service

Thursday 9.30am-1.00pm.

Operating from St Mary Magdalene Anglican Church, 67 Cambridge Street, Ashhurst.

For Appointments contact: Manawatū Home Budgeting Service. Phone: 358 2279; Cell: 0800-228 343.

### Meditation Class

Overcoming Stress and Anxiety will be held every Thursday from 10.00 am - 11.00 am followed by morning tea. Suggested donation: \$7. Join us in the lounge of the Village Valley Centre. No special clothing is required. Everyone welcome. For more information, go to [www.meditateinpalmerstonnorth.org](http://www.meditateinpalmerstonnorth.org).

### Manawatū Toy Library

200 Church Street, Palmerston North  
Hundreds of toys to borrow.

Open 9.30 -12.30 Mon, Thu, Sat.

Visit our website to join, view our toys and learn more.

[www.manawatutoylibrary.co.nz](http://www.manawatutoylibrary.co.nz)

### Ashhurst Ladies Coffee Group

10.00 am—11.30 am at The Village Coffee & Co, 62 Cambridge Avenue, Ashhurst. A regular Thursday weekly coffee group, for ladies of all ages in Ashhurst for some social time, a few laughs and new friendships.

## RECAP Update

1.00 pm. Not a direct 'swap' as such, but you are free to gift, or to take whatever is on offer. Often there are seedlings, seeds, cuttings, plants, fruit, veggies, baking and more.

**RECAP Community Kai:** This is a rescued food distribution service that runs at the back of the library from 3.15 pm - 4.15 pm each Tuesday. This is a 'no questions asked' service where you are able to select what you want/need from the food and other items that have been donated.

**Education:** We run regular workshops and seminars on a variety of topics based in resilience and sustainability. These are intended to empower people with practical skills and knowledge.

#### Other things we do in our community:

We run a twice weekly garden club at Ashhurst school where we teach tamariki skills around growing kai. We run

educational activities at the Ashhurst Library during their school holiday programme. We've worked with local councils to plant more fruit trees in public places. We've planted natives with local tamariki. We offer a variety of regular and casual volunteer opportunities. And much more! We've been in operation in Ashhurst for well over a decade, and overall we aim to engage in activities which support the wellbeing of both residents and our local environment as well as connecting our community.

To sign up to our newsletter or to volunteer please contact us at [info@recap.org.nz](mailto:info@recap.org.nz).

And as always—a big ngā mihi to the many volunteers who make up RECAP.

Noho ora mai.

**Chris Love—RECAP Coordinator**

## County Fayre Update

We are open Sundays, 1.00 pm - 4.00 pm or by arrangement. We are closed on Public Holiday Weekends.

#### Art Trail Manawatū

Inviting all Artist's to exhibit with County Fayre at the Art Trail Manawatū, 18th and 19th October, 2025. We welcome interpretations in any size or medium, in the theme of "Afternoon Tea in the Valley – Reflecting on the beauty of everyday connection, found in a cuppa, quiet moments, and a valley shared." To express your interest or for more information please email [CountyFayre@inspire.net.nz](mailto:CountyFayre@inspire.net.nz) or message us via <https://www.facebook.com/CountyFayre>, application will close on 31st August, 2025.

#### The Pohangina Downhill Walk

County Fayre invites you to book your ticket to an enjoyable family friendly day out at "The Pohangina Downhill Walk", Saturday, 8th November 2025, 8.00 am - 2.00 pm. A Shuttle Bus delivers you to

the top of Ridge Road to the Branch Road Walkway. Walk down through six kilometres of native bush and farmland back to the Pohangina township and County Fayre, to a light lunch.

You **must** book and prepay.

Buses will leave County Fayre every 45 minutes from 8.30 am to 11.30 am.

Please note, the track is unsuitable for wheelchairs, prams, strollers or mountain buggies and dogs are prohibited due to the track passing through farmland.

#### Cost:

Adults \$30, Children \$15 (5 to 15yr), Family \$100 (two adults and four children), under 5's free.

Contact us at [countyfayre@inspire.net.nz](mailto:countyfayre@inspire.net.nz) or <https://www.facebook.com/CountyFayre>.

**Joanne Morris-Kynoch—President**

## Business Focus: Urbaness

Hello, Ashhurst community.

I'm Amanda—the hands, heart, and soul behind Urbaness, your local beauty and wellness sanctuary tucked inside The Hair Lab and Co, where I work

alongside the lovely Tash. Together, we've created a space filled with passion, care, and a genuine love for what we do.

*Continued on next page*



## Riverside Orchards

**For Your Fresh Fruit and Vegetables,  
Fresh Baked Bread,  
Cheese, Milk, Family Pies**

Daily delivery into Ashhurst and Palmerston North  
Order online now at [www.riversideshop.co.nz](http://www.riversideshop.co.nz)

1346 Napier Road (opp Petrol Station) Ashhurst

P: 06 326 8800 F: 06 326 8750 E: [sales@riversideshop.co.nz](mailto:sales@riversideshop.co.nz)

## O'LEARY TREE SERVICES LTD

### Craig O'Leary

Dip. Hort/Arb. Certs, Trade Cert. Hort.

30 Years Experience

**Tree Removal & Trimming  
Pruning, Hedge Trimming**

P. 06 326 9688 M. 027 672 7747

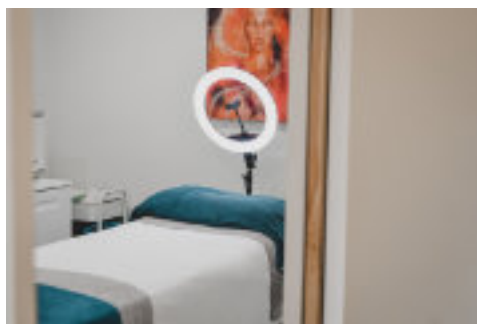


## Business Focus: Urbaness

In 2014, I packed up my life in Christchurch and moved to Ashhurst for love. Since then, I've become a wife, a mum, and built a life here in this wonderful community. My journey in beauty therapy began in 2004, and over the years, both my life and this industry have grown and evolved. But through all the changes, one thing has remained the same: my passion for how I want people to feel.

My career has spanned over 20 years and has been built with time, energy, and an unwavering love for helping people feel confident, cared for, and seen. From a spare bedroom to a cabin, and now to a welcoming space in the heart of Ashhurst, Urbaness has grown alongside me—with hard work, and a deep commitment to every client who walks through my door.

Urbaness isn't just about beauty treatments. It's about nurturing your skin, your wellbeing, and your sense of self. I offer a carefully curated range of professional skincare and wellness products—including Pure Fiji, Bestow Beauty, Kereru Natural Products and



advanced cosmedical skincare—all paired with customised advice and one-on-one support.

Every product on my shelf, every treatment on my menu, and every detail in my salon has been thoughtfully chosen because I truly believe you deserve the very best—and I put my heart into making sure you feel that with every visit.

At Urbaness, you'll find professional products and personalised guidance to support your skin and inner wellbeing. Whether you're booking a facial, stocking up on favourites, or just popping in for a chat, I'm here to help you feel your best—inside and out.

You can also shop online or make bookings anytime via my website – it's all there to make life a little easier.

If you've never been in before, now is the perfect time. To find out more, go to <https://urbanessashhurst.com/>.

Thank you for having me. With love and gratitude,

**Amanda Whelch**



## St. Columba's Catholic Church

St. Columba's Catholic Church would like to welcome you to join us for Vigil Mass, celebrated every Saturday at 5.00 pm.

## Ashhurst Scouting

Keas (Mon 5.30 pm-6.30 pm),  
Cubs (Wed 6.00 pm-7.30 pm) and  
Scouts (Mon 6.45 pm-8.15 pm),  
during school terms.

Contact Julie (Group Leader) on  
[ashhurst@group.scouts.nz](mailto:ashhurst@group.scouts.nz) for more  
info.

## Ashhurst Indoor Bowling Club

Our weekly Thursday bowling has now started and ends Thursday, 25th September.

We play in the Ashhurst Village Valley Centre with games starting 7.30pm.

## Ashhurst Village Radio

Your Community FM Radio Station  
Broadcasting 24/7

Community notices are free.

Businesses advertisements 30  
second \$5.00

Free training for volunteers joining the  
staff.

Contact: 027 7525 0775  
[ashhurstvillageradio@gmail.com](mailto:ashhurstvillageradio@gmail.com)

## Ashhurst Foodbank

Open 2.30pm-3.30pm every  
Thursday. Methodist Church,  
Bamfield Street, Ashhurst.

Contact: Marianne 027 627 2054

**Manawatu Contracting & Drainage Ltd**

## Ashhurst's LANDSCAPE SUPPLY YARD

- |                       |                |                                 |
|-----------------------|----------------|---------------------------------|
| ✓ Topsoil/Compost Mix | ✓ Bark Nugget  | ✓ 5mm Screened Sand             |
| ✓ Organic Compost     | ✓ Lime         | ✓ 20mm Washed Stone             |
| ✓ Organic Lawn Mix    | ✓ Pea Straw    | ✓ Crushed Rotten Rock           |
| ✓ Topsoil (screened)  | ✓ Pea Metal    | ✓ AP20 Top Course               |
| ✓ Weedmat 1 & 2m      | ✓ Crusher Dust | ✓ AP40 Base Course              |
| ✓ Mulch               | ✓ Builders Mix | ✓ Cement Bags 20kg              |
| ✓ 20mm White Chip     | ✓ Nova Coil    | ✓ RTU 45 Min Concrete Bags 20kg |

Contact: Greg 027 557 8809

[greg@manawatucontracting.com](mailto:greg@manawatucontracting.com)

Hours: Mon-Fri 7.30am-5.00pm; Sat: 9.00am-3.00pm; Sun: 9.30am-2.30pm

145 Mulgrave Street, Ashhurst

just along from the PNCC Recycling Centre

HOME DELIVERIES AND BULK DELIVERIES AVAILABLE

## Your Local Real Estate Agent



**PETER COLVILLE**  
RESIDENTIAL SALES

**021 474 557**

[peter.colville@uniquerealty.co.nz](mailto:peter.colville@uniquerealty.co.nz)

[/PeterColvilleProfessionals](https://www.facebook.com/PeterColvilleProfessionals)

LICENSED REAA 2008

**Ashhurst Playcentre**

Licensed Early Childhood Education Provider. Over 50 years in your community. Spaces now available for children 0-6 years.

Call 326 9270 or email [ashhurst@playcentre.org.nz](mailto:ashhurst@playcentre.org.nz) or drop in for a free visit and a cuppa.

Monday 10.30 am-2.30pm  
Tuesday and Thursday 9.00 am-1.00 pm. 118 Stanford Street, Ashhurst

**Ashhurst Clay Target Club (claybird shooting)**

Meets the last Sunday of every month from 9.30 am at 651 Valley Road. Anyone welcome to join us  
Queries: Ken Simonsen,  
Phone: 329-4800

**Ashhurst and District Senior Citizens Association Inc**

Meet on the first Thursday of each month in the Ashhurst Village Valley Centre, at 2.00 pm. We invite you to come along and enjoy an afternoon of friendship and entertainment.

Contact: Stephanie Madgwick—Secretary 021 025 99382

**Local Justices of the Peace**

Mrs AK Rutherford—Available by appointment—027 404 8551

Mr F Saua  
Pohangina Road RD 14—029 254 3206  
Mr JC Culling

Pohangina Road—027 289 5252

J Wakeford

Hiwinui—022 319 0434

**Craft on Cambridge**

At the Chapman Hall, Anglican Church, Cambridge Avenue, on Monday afternoons 1.30 pm - 3.30 pm and Wednesday mornings 9.30 am-11.30 am. B.Y.O. craft and the cost is \$2 each time.

A friendly, relaxed group who can help with your UFOs!

Contact: Marianne Crawford 027 627 2054

**Matwork Pilates Sessions**

Tuesdays at 6.00 pm—55 minutes. Centennial Room at the Village Valley Centre.

Free first session. Bring a mat or \$12 mats available.

"In 10 sessions you will feel the difference, in 20 you will see the difference, and in 30 you will have a new body." Joseph Pilates

To register contact Narrelle 021 2673676

# Ashhurst Scouts



Young adventurers in Ashhurst have an exciting opportunity to join one of the community's most active youth organizations. Ashhurst Scout Group is currently welcoming new members across all age groups, offering children aged 5-14 the chance to develop skills, make friends, and embark on unforgettable adventures.

The group runs three awesome sections during school terms, each tailored to different age groups and interests. Keas (ages 5-8) meet on Monday evenings and are currently exploring the fascinating world of Emergency Services, learning about community helpers and safety skills. Cubs (ages 8-11) gather on Wednesday evenings focusing on raft building, connecting with nature and working as a team. The Scout section (ages 11-14) also meets on Mondays and is currently working toward their Peace Education Better World Badge, exploring creating a culture of peace that celebrates diversity and inclusion, understanding the impacts of war and conflict, and learning the actions to support peace in our community.

Scouting is more than just weekly meetings, our young people participate in occasional weekend activities that create lasting memories and build confidence. Whether it's camping under the stars, learning practical life skills, or working on community projects, there's always something exciting happening.

The structured program ensures children develop at their own pace while building friendships that often last a

lifetime. From learning knots and outdoor cooking to developing leadership skills and understanding different cultures, Scouting offers a well-rounded experience that complements formal education.

With spaces available across all sections, families interested in joining can contact the group leader to arrange a visit. New members are welcome to attend a meeting to see what Scouting is all about before making a commitment.

The group is also actively seeking adult volunteers to join their dedicated team of kaiarahi (leaders). Whether you have Scouting experience or are completely new to the movement, there are opportunities to contribute your skills and passion for youth development. Adult volunteers receive full training and support, and the flexible commitment options mean you can contribute in a way that fits your lifestyle. From helping with weekly meetings to supporting weekend adventures, or even as a valued part of our committee, every contribution makes a difference in young people's lives.

Ashhurst Scout Group represents excellent value for families seeking structured, fun activities that contribute to their child's personal development. The combination of adventure, learning, and community service creates an environment where young people can thrive and discover their potential.

For more information about joining Ashhurst Scout Group or to arrange a visit, contact Julie Gillam-Hill, Group Leader [ashhurst@group.scouts.nz](mailto:ashhurst@group.scouts.nz).

## Business Focus: The Hair Lab and Co

What began as a home-based venture to work around family life has blossomed into a vibrant, community-focused salon in the heart of Ashhurst. The journey from a small home setup to our current boutique location has been both exciting and rewarding. Huge shout out to our amazing supportive husbands, dads and friends who have put blood sweat and hours building my dream space.

Partnering with Amanda from Urbaness has been a wonderful experience, helping shape the salon's growth and spirit.

With a focus on warmth, connection, and quality service, our salon has become a welcoming space for all. Emmaleigh and Emma have been incredible additions to our salon family—

*Continued on next page*



Always Looking After the Locals  
**Village Four Square and Lotto**

**All You Need!**

- ◆ Groceries
- ◆ Fresh Produce /Meat
- ◆ Magazines,
- ◆ DVDs,
- ◆ Beer/Wine,
- ◆ LPG Gas Swap/New Bottles
- ◆ Lotto

**Ashhurst Medicine Depot****Hours**

Monday—Friday: 7.00am—8.00pm

Saturday: 7.30am—8.00pm

Sunday: 8.00am—8.00pm

Public Holidays: 8.00am—8.00pm

*Pravin & Padmini Patel welcome you at*

141 Cambridge Avenue, Ashhurst

Phone: 326 8014



**The Bottle-O  
Ashhurst**

Real Locals, Real Value

**Open 7 Days**

62 Cambridge Avenue, Ashhurst

06 777 5119

[tboashhurst@gmail.com](mailto:tboashhurst@gmail.com)

Like us on Facebook





# Business Focus: The Hair Lab and Co

their passion and talent have played a huge part in growing the business into what it is today. We're proud to be part of the Ashhurst community and grateful for the continued support that has helped us thrive.

Contact us on 027 818 8962 or email us at [thehairlabandco@icould.com](mailto:thehairlabandco@icould.com).

From the bottom of our hearts *thank you* for supporting our dreams and feeding our whānau.



## Ashhurst Protest: Save our School Buses

Ngā mihi nui to the organising team and everyone in the community who showed up to take part in this protest. I didn't manage to count every head but we had well over a hundred people and managed to get coverage on TV1 Breakfast, 1News, Radio New Zealand, More FM and in the Manawātū Standard. As I write this we have been told we can expect a decision in two-three weeks regarding whether our High School bus service will continue past 2025.

### Some key points:

There is no plan to review this.

A review of our service was done in 2017 and the buses remained. We are currently looking into why the service remained after this review and what has changed since 2017 to require it be pulled.

With all of the school bus routes that have been reviewed and discontinued in the past 18 months, ours has by far the highest number of students affected at well over 200.

Most discontinued buses were taking under 20 students, so the removal of our service will have the widest impact in the whole country. With such a large number of whānau affected we will most definitely have a number of students unable to get to school, and caregivers; and parents/caregivers with inflexible working hours will have to choose between employment and transporting their children to school.

Under the legislation Freyberg High School fits the criteria to keep a bus (or buses) as it is our closest school. There

are 70+ Ashhurst students at Freyberg and they currently use two full Ministry provided buses. The Ministry has indicated this school's buses will go as well, which will be in breach of the legislation. If the removal of this particular bus breaches the legislation how can it be justified by the Ministry? It is uncertain if Freyberg School even has the capacity to take extra students if theirs is the only bus provided. We are seeking clarification here and if their Ashhurst based role increases, will the Ministry increase the buses to match this to avoid breaching the legislation?

The Ministry's line of 'parental responsibility' in our scenario will ultimately result in 100-200+ extra cars attempting to leave and enter Ashhurst at peak times through one intersection that is very close to the new Te Ahu a Turanga highway.

A charter or private bus would be anywhere between \$350-\$450 per term per child (this is based on the Feilding-Ashhurst bus cost) during a cost of living crisis. For many of our whānau this is housing and food costs.

We have **one** public bus with 25 seats that leaves at the correct time to get kids to the Main Street terminal to then take a connecting bus to their school. Every school requires a connecting bus. With the same situation on the return trip. The Ministry is still insisting that this is a suitable alternative to six buses carrying 200+ students. They are also continuing to attempt to shift blame and

*Continued on next page*

## Anglican Parish of Pohangina St Mary Magdalene's Church, Ashhurst

8.00 am First Sunday of the Month  
10.00 am every Sunday

### St Bartholomew's Church, Komako

10.00 am 2nd, 4th and 5th Sundays.  
Contact the Parish office for further information: Phone 326 8543 or  
Email: [info@parishofpohangina.co.nz](mailto:info@parishofpohangina.co.nz)  
Web: [www.parishofpohangina.co.nz](http://www.parishofpohangina.co.nz)

St Mary Magdalene Church—Office Hours (subject to change at short notice):

Monday and Wednesday: closed,  
Tuesday, Thursday, Friday: 9.30 am-12.30 pm

### Ashhurst Pohangina Squash Club

Club night is Monday, from 6.00 pm. Come along and give squash a go! All members and newcomers welcome.

Courts are located at the rear of the Village Valley Centre on Guildford Street

Contact Braydon on 027 390 5611, [ashpohsquashclub@inspire.net.nz](mailto:ashpohsquashclub@inspire.net.nz), or find us on Facebook.

### Ashhurst Pohangina Lions

The Ashhurst Pohangina Lions meet every second Thursday of the month at the R.S.A. Clubrooms at 6.30 pm. This established and friendly Lions Club is community oriented.

### Contacts:

Jack Zwart (President) 326 8958  
[standishzwart@gmail.com](mailto:standishzwart@gmail.com)

Brent Besley (Secretary) 329 4891

[brent.liz@inspire.net.nz](mailto:brent.liz@inspire.net.nz)

Mike Forlong (Memberships) 329 4741  
[forlong@inspire.net.nz](mailto:forlong@inspire.net.nz)

### Ashhurst Music Club

Live original music in your back yard

Our club is open to all ages and skill levels. Monthly meetings are about to start so keep watch on the Facebook page and in the Village Voice.

Contact [kiwifieldcrew@inspire.net.nz](mailto:kiwifieldcrew@inspire.net.nz) or phone Grant 027 432 7648

### Pohangina Rubbish Collection

Rubbish is collected every Monday. Bags out by 7.30am



Come and see the team at Kauri Physio for all your ACC and non ACC injuries

If you are unsure please email and we will advise whether physio is the right choice for you.

KAURI  
PHYSIO

619 Featherstone Street,  
Palmerston North  
Phone: 06 357 4424

[Tamsin.mafi@kaurihealthcare.nz](mailto:Tamsin.mafi@kaurihealthcare.nz)

## GRAEME BILSLAND PAINTERS

M: 027 581 2510 P: 06 357 3009 E: [bilsland@inspire.net.nz](mailto:bilsland@inspire.net.nz)

PO Box 20017, Palmerston North 4448



## Kids 'n Motion

Now in its 23rd year of providing music and movement for 0 - 5 year olds within Ashhurst and the surrounding community.

Every Friday 9.45 am - 11.15 am during school terms at the Village Valley Centre, Guildford Street, Ashhurst.  
Cost: Gold coin donation.

Contact: Cherie O'Leary, Ph: 326 9688  
Check out our Facebook page and like us! Kids 'n Motion is such a great group to come along to—see you there!

## Pohangina Yoga Classes

Sundays 9.30 am  
\$10 per class or \$50 for six classes.  
Suitable for beginners and those with more experience of yoga.

Contact Catherine: [hauorayoga@gmail.com](mailto:hauorayoga@gmail.com), 021 0270 4400, [www.hauorayoga.co.nz](http://www.hauorayoga.co.nz), Facebook: Hauora Yoga

## Pohangina Local Christian Radio

3ABN Radio is now broadcasting in Pohangina Township on 107.7FM. Offering lifestyle radio with a difference! Broadcast 24 Hours, 7 Days a week for the 'Best News Ever!' [www.3abn.org](http://www.3abn.org)

Contact Rex 06 356 1141 for Free Bible Studies, Books and DVD's.

## River Church

We meet at 131 Cambridge Avenue each Sunday at 10.00am. All welcome. Pastors Dave and Kellie Ross. Phone 027 247 2179 or 328 4864 (evening) [www.riverchurch.nz](http://www.riverchurch.nz)

# Ashhurst Protest: Save our School Buses

responsibility on to Horizons. Horizons have stated that they do not have the capacity to provide the number of buses we need and refuse to shift this cost to ratepayers.

Central government has stated that they want to see school attendance rates increase and see New Zealanders in employment. They have also told local Councils that rate increases are unacceptable. This decision is at odds with all three stated objectives.

There are safety issues present at the Main Street terminal area outside the courthouse where students using the public bus will be left to catch a

connecting bus to school. Especially for students aged 12 and 13 who require supervision.

You can advocate for the community keeping this service by emailing:

James Meffan Group Manager, School Transport

[school.transport@education.govt.nz](mailto:school.transport@education.govt.nz)

Erica Stanford Minister of Education  
[Erica.Stanford@parliament.govt.nz](mailto:Erica.Stanford@parliament.govt.nz)

Suze Redmayne Rangatikei MP  
[suze.redmaynemp@parliament.govt.nz](mailto:suze.redmaynemp@parliament.govt.nz)

New Zealand Transport Agency  
[customer.relations@nzta.govt.nz](mailto:customer.relations@nzta.govt.nz)

## Ashhurst School

Kia ora e te whānau,

Welcome back to Term 3. The holidays seemed to pass really quickly and it is hard to believe that we are already halfway through the school year. We have a lot happening in the school this term with a variety of sporting tournaments and the Year 7/8 camp to Tui Ridge only weeks away.

At the end of Term 2 we had a lovely community afternoon tea farewell for our very own Whaea Kaz. Stories and memories were shared that highlighted just how much Kaz has done for our school and how much she has achieved in her time here as Deputy Principal, SENCO, LSC, and all round 'get jobs done' persona! In her time, Kaz has worn many 'hats' and has always had our tamariki at the heart of everything she

does. These times are often full of emotion as we farewell a much loved member of the Ashhurst School staff and community.

Thank you for all that you have given us here at Ashhurst School, Kaz. From the bottom of our hearts, we wish you, Sammy, and Rue all the luck in the world as you embark on this next exciting chapter in your lives. You will be missed!

We also farewell the incredibly talented Whaea Sammy, who is off on an overseas adventure. You have contributed so much to our school in your short time with us. We are so lucky to have been able to be the school you started your teaching career! Keep being your fun loving, creative self in all that you do. Bon Voyage!

## Ashhurst Library

Hi everyone, can we say a big thank you for all the support and attendances during the July holiday programme, we had a great time. And a very special thank you to all those who helped and coordinated events, it is greatly appreciated.

### Treasures with Tania

Friday, 8th August at 10.30 am.

Our great friend Tania Kopytko will be holding this workshop celebrating Family History month. This will coincide with Elevenses on that morning.

Everyone is invited to bring along a small treasure from their family and talk about why it is so precious. Keep an eye out on our Facebook page for more details closer to the date.

### Family Book Displays

Jill does such a great job with our themed book display table. Over the next few weeks, we will be inviting families to create their own book displays based on their recommendations. We are sure to get very varied and different displays for you all to enjoy.

### Justice of the Peace

Wednesdays 12.00 pm - 1.00 pm

We are very pleased to have Aleisha Rutherford JP here every Wednesday. If you require the services of a JP, come on down. Thanks so much Aleisha.

### Ashhurst Elevenses

Come along every Friday during term time for a cuppa and a friendly chat. Everybody is welcome! There will even be tea, coffee and the odd biscuit provided, but if you want to bring along some home baking, you are very welcome.

### Ashhurst Mighty Kids

Ashhurst Mighty Kids is our preschool programme of stories, songs and crafts. We always have a different theme for each session and finish off with some yummy cheese toasties

Wednesday 13th August 10.30am

Wednesday 27th August 10.30am

### Ashhurst Library Facebook

Just a reminder that if you want to keep up to date with all our latest news, events or announcements, just visit us at <https://www.facebook.com/AshhurstLibrary> and click "Like".

### Ross Meads—Ashhurst Library



**HOMESTEAD  
CATTERY**

*Skilled and caring local staff  
with over 14 years experience*

**31 Pohangina Road, Ashhurst**  
*Viewing by appointment welcome*

**Ph: (06) 326 8064**

**[www.homesteadcats.co.nz](http://www.homesteadcats.co.nz)**

Find us on [fb.com/homesteadcats](https://www.facebook.com/homesteadcats)





# Kia ora!

How quickly has the first half of the year disappeared?

It's been a busy one for Ashhurst, with the opening of the long-awaited Te Ahu a Turanga–Manawatū Tararua Highway. There's been plenty of council work happening around town too! With local elections coming up in October, the Mayor's column has now become a council column.

## Local elections

We're now in the pre-election period ahead of the local elections in October. During this time, all updates are shared on behalf of Palmerston North City Council as a whole, not from the Mayor or individual councillors. This helps ensure we stay neutral and don't give any candidates an unfair advantage.

We've also just released our 2025 Pre-Election Report. This report outlines the key challenges and opportunities facing Palmy, explains the Council's current financial position, and shows how we fund the projects, services and facilities that keep our city running. Whether you're standing as a candidate or just want to make an informed vote - this report is a great place to start. Read it on our website: [pncc.govt.nz/elections](https://pncc.govt.nz/elections)

## Filtration plant at Ashhurst water bore

Last month marked a significant milestone at the Ashhurst water bore with the connection of a new \$1.7 million filtration plant. This has been under construction since April and is designed to remove natural minerals like iron and manganese that sometimes make the water appear dirty.

While the filtration plant is now connected to the borehead, your drinking water will still bypass it for a few months while we carry out detailed inspections and testing. Over the coming months, we'll connect the plant's electronics and commission it fully by the end of the year. We'll then turn our attention to cleaning the sediment out of the wider pipe network across Ashhurst before doing the same at the Ashhurst reservoir. This will take a few months to complete after commissioning the filtration plant at the bore. From then, you can look forward to clear water straight from the tap, all year round. This is the first filtration plant of its kind in our city, and the plan is to replicate it at other bores overtime to improve the quality of our water supply for everyone.

## Ashhurst Domain reserve management plan

We've been working alongside you all since late-2023 to improve the 28-year-old reserve management plan for the Ashhurst Domain. It will now be adopted at a council meeting over the coming months. You can find all the details on our website [pncc.govt.nz/ashhurstdomain](https://pncc.govt.nz/ashhurstdomain)

## Custom Street rebuild finished

In the transport space, we finished upgrading Custom Street at the end of June. What was once a dusty, unsealed road is now a fully upgraded industrial road.

The 500-metre stretch is now wider, sealed with asphalt, includes a new footpath on the residential side, and has connections to the city's drinking water, wastewater and stormwater networks. A new caravan dump station has been built at the end of the street to replace the existing one at Ashhurst Domain.

This will enable the development of industrial land on both sides of the street and help future growth.

## Te Ahu a Turanga: Manawatū Tararua Highway updates

With the opening of Te Ahu a Turanga: Manawatū Tararua Highway, we've now resumed responsibility for the Saddle Road and Pahiatua Track from the NZ Transport Agency. Our boundary is the Pohangina River bridge, where it then becomes the responsibility of Manawatū and later Tararua District Councils.

We're awaiting guidance from NZTA on what happens with the old gorge road, which includes it potentially being used as a walking and cycling route.

We've also been handed back the village streets that connect to Saddle Road, such as Cambridge Avenue, Mulgrave Street and Salisbury Street. NZTA has provided us with funding to reseal these roads this summer, when the weather is dry — so you'll see our surfacing crews from Fulton Hogan out and about in a few months.

## Wyndham Street upgrade

The transport team is preparing a report for elected members on upgrading part of Wyndham Street. This includes widening the road, a footpath on the northern side, and a new kerb and channel drain on both sides of the road. We'll provide you with progress updates as we move along with the process.

## Holiday programmes at the library

Well done to everyone who attended and supported the Ashhurst Library school holiday programme. Popular sessions included making birdfeeders, reading to dogs, kids bingo and the glow disco.

## ASHHURST COMMUNITY LIBRARY

### Open days

Monday	2pm - 5pm
Tuesday - Friday	10am - 5pm
Saturday	10am - 1pm
Sunday	Closed

Access the full range of library digital resources at:

[citylibrary.pncc.govt.nz](https://citylibrary.pncc.govt.nz)

## SPLASHHURST! COMMUNITY POOL

### Normal hours

Tuesday - Friday	6am - 9am + 1pm - 7pm during school term 6am - 7pm during school holidays
Saturday	8am - 6pm
Sunday - Monday	Closed

[clmnz.co.nz/splashhurst](https://clmnz.co.nz/splashhurst)

## ASHHURST RUBBISH + RECYCLING

Rubbish bag and bin collection Tuesday morning. Bags out by 7.30am.

Find your alternating recycling and glass collection days on our website

[pncc.govt.nz/recyclingdays](https://pncc.govt.nz/recyclingdays)

## MULGRAVE ST TRANSFER STATION

Recycling, green waste and general rubbish disposal.

### Open days

Tuesday	1pm - 3pm
Saturday	10am - 4pm

Council's 24/7 contacts are **06 356 8199**, the **Council Facebook** page, [pncc.govt.nz](https://pncc.govt.nz) and the **Snap Send Solve** app to quickly report anything that needs attention or fixing.

**PALMY**  
PAPAIOEA  
PALMERSTON  
NORTH  
CITY

## Published by The Ashhurst Village Voice Society Inc.

### Contacts

Editor: Llyvonne Barber

Phone: 022 051 6315

[ashhurst.voice@gmail.com](mailto:ashhurst.voice@gmail.com)

PO Box 38, Ashhurst

Advertising: Grey Smith

Phone: 326 8075; 021 175 1726

[rgcsmith@inspire.net.nz](mailto:rgcsmith@inspire.net.nz)

Proof-reader: Vivienne Dalgleish

### Letters to the Editor

Letters under 200 words are preferred.

The writer's contact details are required on all letters (not for publication), including address, email and phone number. We may need to contact you to clarify minor details.

The editor reserves the right to edit, abridge or decline letters or articles without explanation. Pen names or letters submitted elsewhere are not acceptable.

If supplying images, high resolution images are required. Please feel free to contact the editor if you are unable to email images.

We do not accept flyers or pamphlets for publication. Contents need to be provided as articles for publication.

### Advertising Rates & Information

Articles and community notices are free. Adverts can vary from a few lines in the side column to a double business card size. Conditions apply. A 15% discount is offered if you pay in advance for a full year (11 issues). A business card size advert is to be 60mm by 100mm at 300dpi and costs \$50.

The cost varies proportionally for smaller and larger sized adverts.

For further information on advertising costs and payments please contact Grey Smith.

Advertisers, we prefer that you supply files in pdf format. Please note that files supplied in .pdf format are unable to be adjusted from our end. Adverts can be created by the Editor for a small additional cost. These can be adjusted as required.

### Village Voice Deadline

Deadline for articles and advertising submissions for the next edition is:

**5.00 pm Wednesday, 20th August 2025.**

We cannot guarantee your submission will be included after this date.

## Ashhurst Clay Target Club

Our June meeting started slowly and, despite it being the last weekend of duckshooting, there was a good turnout (five squads).

Walking between stations was a little muddy but hey, warm and dry in the clubrooms afterwards.

**Club shoot 25 DTL:** Jason Rankin

**Club handicap:** Mike Hoggard

**Triples 30 targets:** Craig Hocken and Joby Stella

**Karen Pawson—Secretary**

Photo—Mike Hoggard



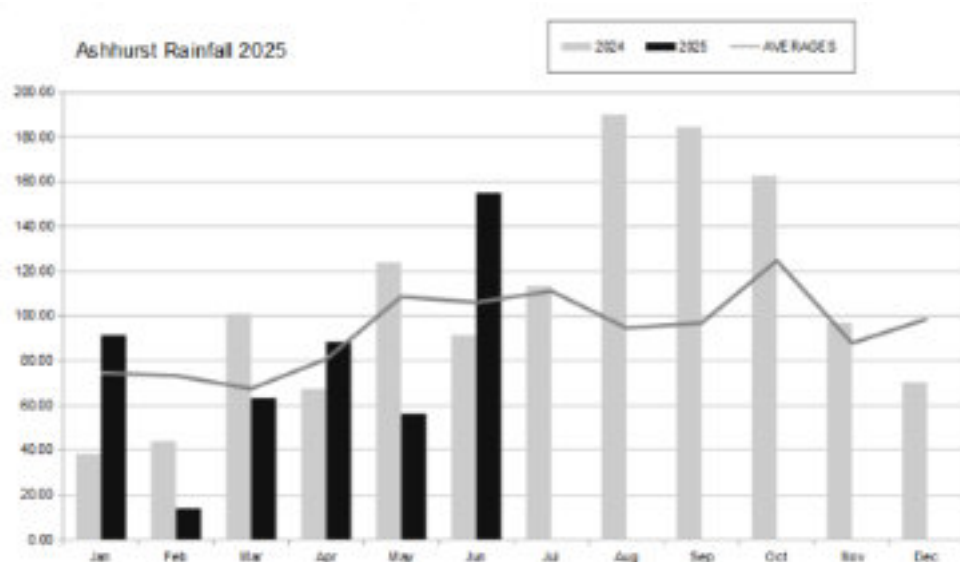
## Ashhurst Rainfall

155 mm of rain fell in June 2025, above the monthly long-term average of 106.07 mm.

Rain was recorded on 16 days, with the highest one-day rainfall of 31 mm on the 28th of June.

The total annual rainfall for the period from 1st of January to the 30th June is now 469 mm, which is below the long-term average for this period of 511.27 mm.

**Quang Mai**



**Samaritans**

We are here

**24 hours a day**

Whether you are lonely, unhappy,  
ready to end it all

**WE ARE HERE TO LISTEN TO YOU**

☎ 358 2442 or 0800 72 66 66 | [www.samaritans.org.nz](http://www.samaritans.org.nz)