



Ashhurst Village Voice

*Informing the Ashhurst
& Pohangina Communities*

ISSN 2324-5468 (Print)
ISSN 2324-5476 (Online)

August 2022

<https://parishofpohangina.net/groups/village-voice>
Established 1997

Community Comment

Road related problems rate a mention in this month's column. A serious crash and fatality of a Pohangina personality on the intersection of Hillcrest and Bunnythorpe Roads has raised questions on its safety. Although the 50kph speed limit begins above this intersection, it is not apparent to many motorists and needs more signage.

Facebook comments about potholes in our streets express the frustration of motorists who have to navigate these damaged roads. The Council faces an ever increasing maintenance bill to repair damage reputedly caused by trucks too heavy for the roads they travel on. Please do continue to advise the Council of problem areas on streets or footpaths using their app or helpline, especially if vehicle damage or trip hazards are likely.

Boy racers are getting more adventurous and have migrated from Napier Road to central Ashhurst for recent burnout activity. The lack of locally based police presence seems to have encouraged a variety of illegal behaviours. We hope that wiser heads will prevail to help address the increasing crime wave before it gets worse.

A motorhome confrontation with a

power pole in Salisbury Street created a power outage across Ashhurst for some time. Traffic detours were also required as traffic was diverted around the danger of downed power lines. No reasons have been provided for the wider scale outage experienced across the periphery of the city the previous month.

Despite the winter weather conditions of wind, rain and cold, the appearance of daffodils and lambs heralds the arrival of spring. As the land dries out, gardeners will be exercising their green fingers and readying the ground for the growing season ahead. We are all aware that this has been a rather damp and dreary month.

The Ashhurst Domain has been receiving some well-earned maintenance in recent months. The main office has had a repaint inside and out. The shelter beside the picnic area has also been repainted. A new rock gateway is under construction at the edge of the cemetery. These rock walls and gateway provide guidance and separation of the cemetery land from the camping area beside it. While we have not experienced the wild winds of Wellington, the combination of age and high winds created cascading damage to trees around the picnic area and playground. One of the giant gum trees

has since had its upper branches trimmed back, but not before falling branches created havoc with totara and other native trees nearby. We hope new native trees are on their way to replace those which were damaged.

Harvey Jones



Photo: Construction of rock gateway at Ashhurst cemetery

Inside this month

Letter from the Editor <i>(side column)</i>	2
Corrections	2
Ladies Night Thank You	2
RECAP Update	2
Pohangina Domain Tree Planting	3
Ashhurst Memorial R.S.A.	3
Ashhurst and Districts Senior Citizens Association	3
Manawatu Gorge Annual Predator Trapping Update	4
The Permaculture Garden Tour	5
Damsel Bugs	6
August in the Edible Garden	7
Waka Kotahi New Zealand Transport Agency Update	8
Ashhurst Library	9
Ashhurst Clay Target Club	10
Ashhurst Indoor Bowls	10
Your Council News	11
Ashhurst Bowling Club	12
Ashhurst Rainfall	12
Advertising Rates	12
Village Voice Contacts	12

September Issue
Submission Deadline
5.00pm Saturday, 20th
August 2022

Letter From the Editor

Hello and welcome to the August Issue of the Village Voice.

We almost did not have an issue this month as we were lacking in content. Fortunately, we had some community members that responded to my request for more content at the last minute—so thank you very much.

So, a reminder that we do rely on content from the community, so if you have a group or organisation and would like to let the community know what is happening, please feel free to email in an article to the Village Voice. The deadline is the 20th of the month.

If you would like to write a regular or semi-regular column, I am open to submissions.

As Harvey Jones mentioned in his column, there was an accident that cut power suddenly to most of Ashhurst. At 9.00am, it was a most inconvenient time. I raided my survival kit for my emergency stove so I didn't miss my hot coffee. It was the first time I had tried it in a real world scenario and was quite pleased with its performance. It heated water quite quickly and with very little fuel. Mine runs on methylated spirits. The one thing that did surprise me was that the flame was close to invisible when I was starting it, and when I took the pot off, the flames were surprising high. While we tend to think of survival kits for major emergencies, the contents can be useful during situations that are not so drastic. The one thing that needs to be kept in mind is that if you do use something, put it back when you have finished and replace any consumables.

Until next issue.

Llyvonne Barber—Editor

Corrections

It has been pointed out to me that the date is not correct for the Kids 'n Motion celebration—the correct date is Friday, 19th August, not 19th July (as was printed in last month's issue).

Also, the phone number for one of our adverts was incorrect (Qualified Mobile Beauty Therapist—page 3). The correct number is in this issue—page 3.

Apologies for any inconvenience this has caused.

Llyvonne Barber—Editor

Ladies Night Thank You

On behalf of all our customers and volunteers at the Ashhurst Food Bank I would like to say a heartfelt 'thank you' to everyone who contributed to making the recent Ladies' Night Out event such a success.

By all accounts the businesses were very pleased with the response; the social interaction was humming; and the final tally for the Food Bank was a mind-blowing \$1,036.80! This will make such a difference to those in our community who are struggling to put a nutritious variety of food on the table for their families.

The Community Dinners and Lunches

RECAP Update

Kia ora, from the team at RECAP.

On Wednesday, August 10th 6.30pm—8.30pm we have the seminar 'Designing and retrofitting homes for energy efficiency and water conservation' with Phil Stevens and Nelson Lebo (Palmerston North City Council's Eco Design Advisor) at the Village Valley Centre. Participants will learn how they can have a lighter footprint and reduce spending on household energy and water with permaculture principles and design techniques such as passive solar and appropriate technologies, low-impact and earth-friendly building materials and capturing and storing energy and water when they are abundant for use when they're needed. There will also be a practical component, where participants will be able to make simple items to take home to assist with keeping their home warm and dry. Registrations for this are open now at recap.org.nz.

We have now booked in the remaining Crop Swaps for 2022. Bi-monthly, on the last Saturday of each second month (30th July, 24th September and 26th November)

will continue, provided there are sufficient registrations two days prior to the event. For the Community Dinner, that means the Saturday night and for the Lunch, the Monday night prior to the event. Registrations by text or call to Marianne on 027 627 2054.

The dates are:

Dinners—Mondays, 5.30pm—8.00pm
15th August, 12th September, 10th October and 14th November, .

Lunches—Wednesdays,
11.30am—2.00pm
27th July, 31st August, 28th September, 26th October and 30th November.

Marianne Crawford

11.00am—1.00pm at the Ashhurst Community Library. Bring any excess produce, seeds, seedlings or gardening supplies to share. You do not need to give in order to take and vice versa, and everything is free. Phil Stevens will be along for each one to korero about a number of topics such as energy conservation, warm/dry tips, passive solar, solar electric, how to cut your household emissions with simple and achievable tweaks, gardening topics, water harvesting, fruit trees and other perennial edibles, designing sections for resilience, soil health and more.

We're waiting out the bad weather, but please keep an eye on our website and social media pages (see below) as we have a number of practical outdoor workshops due to be scheduled from September including composting, beginner gardening, foraging and the last two of our Permaculture series: 'Trees, forests, and foods: an ecosystem approach to perennial food gardening' and 'A process approach to small garden design'.

Our Seed Library within the Ashhurst Community Library, Sharing Shelf in

Dave's Plumbing Services Ltd

New Homes, Alterations,
Cylinder Replacements & Maintenance

Dave Brown—Licensed Plumber
Phone: 027 249 2304



Practical, friendly and affordable animal care

Phone: 06 326 9257 Mobile: 027 572 9353

Clinic Hours

Monday 8.30am - 5.00pm Tuesday 8.30am - 5.00pm

Thursday 8.30am - 5.00pm Saturday 9.00am - 12 noon

Wednesday & Friday evenings by appointment

141 Cambridge Avenue

RECAP Update *continued*

the library grounds and Rescued Food Distribution (Wednesdays 3.15pm—4.15pm) from the library back room are all ticking along. All three services are free for anyone in our community to access. We also still have a wide range of specialty pest traps available. To access the traps,

please contact Ian at irassy64@gmail.com.
Take care of yourselves and others. Noho ora mai.

Social Media

facebook [ResilienceAshhurstPohangina](#)
instagram [recap_ashhurst_pohangina](#)

Chris Love—RECAP Coordinator

Pohangina Domain Tree Planting—Everybody Welcome

At last the time has come for us to set a date for the working bee to plant, mulch and stake the beautiful Leafland trees that were so enthusiastically sponsored. We are going to aim for Saturday, 20th August at 8.30am.

Bring your planting tools and wheelbarrows. One or two quads with trailers could be handy. We'll have smoko and a picnic lunch so bring your own thermos and food to share. If the weather is terrible, we'll postpone to the following day via email so check before you leave.

The 40 trees will be delivered beforehand and aluminium labels will be attached to identify each tree's sponsor. They will be

placed in approximate positions ready for planting. We will have a map on the wall of the cricket pavilion. Cam Bird will have completed the fencing which is already underway.

It will be exciting for those sponsors who can make it to plant their chosen specimens and to see the transformation take place. Everyone is welcome whether they are sponsors or not - it will be a great social occasion. If you think you are able to come could you please ring Liz on 3294 891 or email her at brent.liz@inspire.net.nz so that we have an idea of numbers. We look forward to seeing you there!

Julie Ann Bolton

Ashhurst Memorial R.S.A.

Another month has passed and the hours of daylight are increasing and so are the instances of COVID-19. Many of our members have caught this bug. Some have found it just to be a nuisance, while others, including myself, have found it to be really debilitating. Two weeks and I am still not fully recovered.

By the time these notes are published we will have had our long-awaited A.G.M. and the minutes will have been published for members to read. Our next A.G.M. must be held in March as per our constitution, so that is only eight months between meetings. Jonelle Cocks, from our bar staff, has resigned to take up a position with the Compass group. We wish her well, and thank her for her excellent service as an employee of the club.

We are still looking for some person to take over the contract to run the catering side of the club. This opportunity does not come often and someone could make a good income from this venture. If you are interested, please come and inspect the premises and arrange to have a talk to the one of the committee members.

Bingo is becoming more popular each week. Karena is doing a great job so why not come and join her on a Tuesday night. Start time 7.00pm, finish and home before 9.00pm. Watch the R.S.A. Facebook page for upcoming events.

Our thoughts go out to those suffering from the winter ills and chills. May you make a steady and complete recovery and we look forward to seeing you in the R.S.A. in the near future.

Don Barrett—Vice-President

Ashhurst and Districts Senior Citizens Association

We are all hurting with the increase in the cost of living! Petrol, food, and services are costing us more every day,

it seems. With every cent counted each week some are finding it very difficult to make ends meet. Unfortunately, for some

Nail Cutting for the Elderly

A qualified mobile beauty therapist can come to your home to cut nails
Phone: 357 3908 or 021 114 8582

Fruit Tree Services

Pruning, fertilising and spraying of fruit trees. Over 40 years experience.
Phone Phil: 326 9366

JustOne Please

Kia ora, Thank you for the generous donations last month.

The item for August for the Women's Refuge Safe House is, Shampoo and/ or Conditioner.

You can drop these off at the Ashhurst Library. Contact Louise Bowe on 020 410 86128 for more information.

WE NEED YOUR HELP!



Calling all residents...

We're on a mission to make our area one of the safest, best prepared and friendliest in New Zealand! Whether you're a new or long-time resident, Palmerston North Neighbourhood Support is here to help you:

- Get to know your neighbours
- Receive emails + alerts that will keep you up-to-date
- Gain tips and resources, including from NZ Police
- Be able to give back or receive support
- And much much more, all for FREE!

To learn more or get involved, visit us online or contact:

Palmerston North Neighbourhood Support
Alison Jarden JP, Manager
06 355 4468 | 021 0248 4139
info@pncitysupport.com
www.pncitysupport.com



Creating safe, resilient and connected communities.

County Fayre at Pohangina

The creative, social and historical heart of the Pohangina Valley

Open

Sun 1.30-4.30pm

Open Weekdays by arrangement

976 Finnis Road, Pohangina



- *Historic Maps and Photographs
- * Roll of Honour
- * Local Arts and Crafts
- * Devonshire Afternoon Tea/Coffee
- * Scones
- * Muffins
- * Ice Creams
- * Milkshakes
- * Sundaes

Available for hire for small events
EFTPOS and FREE WIFI now available

Find us on Facebook at <https://www.facebook.com/CountyFayre>
or Email countyfayre@inspire.net.nz

We are a community based project run by volunteers

VILLA JOINERY

Quality Kitchens Designed & Manufactured

135 Mulgrave Street, Ashhurst, Palmerston North

P: 06 326 8849 F: 06 326 9745

E: sales@villajoinery.co.nz

Pippins, Brownies and Guides

For girls aged 5—12 ½. Meets Wednesdays 5.30pm—7.00pm, in the St Magdalene's Church Hall, Cambridge Avenue. Contact Caroline Ray on 06 355 1993 or 0276987653. Email carojray@gmail.com



Ashhurst Memorial R.S.A. Inc

74 Cambridge Avenue, Ashhurst. Ph: 326 8296

Summer Hours

Sunday: 3.00pm—6.00pm
Monday: 3.00pm—6.00pm
Tuesday: 3.00pm—6.00pm
Wednesday: 3.00pm—9.00pm
Thursday: 2.00pm—7.30pm
Friday: 2.00pm—11.59
Saturday: 2.00pm—9.00pm



Manawatu Rangitikei Methodist Parish Ashhurst, Bunnythorpe and Pohangina Congregation

Ashhurst Devonport Worship and Community Centre

10.00am 1st and 2nd Sundays

Pohangina Community Church

10.30am 3rd Sunday

Contacts:

Parish Office—323 4127
Heather Fairless—326 8355



Ashhurst Bowling Club

67 Stanford Street.

Season starts end of September through to mid April.

If you would like more information on lawn bowling please call or email:

Adrienne Harding 326 8972/027 283 6317
ashhurstbowlingclub@gmail.com



Ashhurst and Districts Senior Citizens Association *continued*

families every member goes without on occasion. Kidscan, an organisation set up to help children in these families, provides meals and clothing items through schools and child care centres to help these kids. This means that they will not be deprived when it comes to the abilities to learn and progress in life. The creator and CEO of Kidscan, Julie Chapman came to us from Auckland for last month's meeting and gave us a very very informative address. It was so pleasing to learn of what Kidscan is doing and yet we felt so sorry for all

those who are finding it so hard to meet the budget every week.

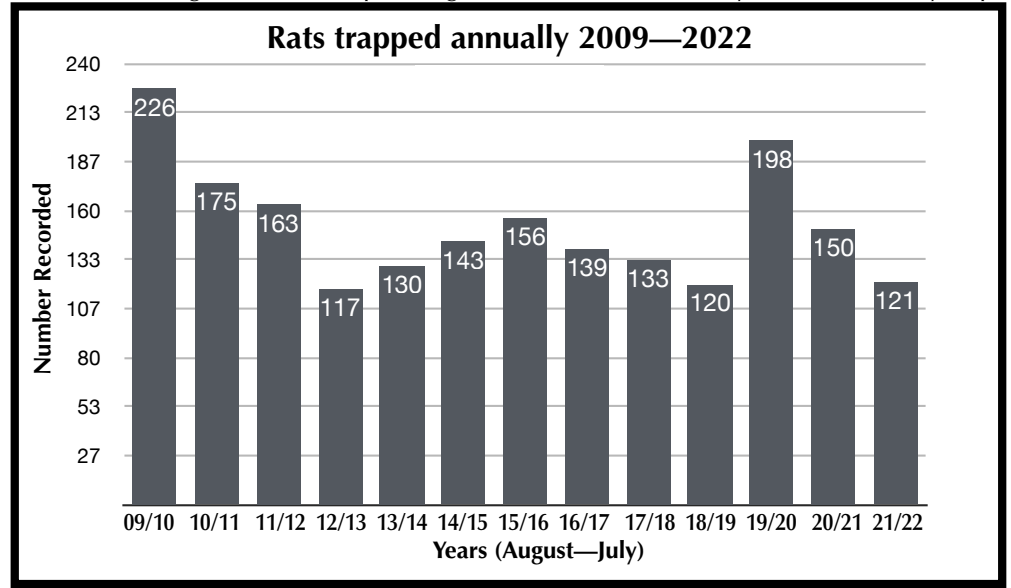
Such are the exciting addresses we have each month, along with entertainment from all sorts of performers, which make our meetings so informative and fun. And, of course, the afternoon teas - yum, yum! So come and join us and enjoy all we experience - on the first Thursday of each month at 2.00pm in the Methodist Hall in Bamfield Street.

Terry Carr—Secretary.

Manawatu Gorge Annual Predator Trapping Report

The Ashhurst Volunteer Stoat Trapping Group completed another year's monitoring of the 109 traps that are located along the Manawatu Gorge Track. It is pleasing to

report that the recovery of seven stoats was the lowest since we commenced trapping in 2009. However, we recovered our first ferret this year and can only hope



Talk to the specialist!

Ashhurst's only real estate office,
Next to the lotto 4 square, Cambridge Avenue

Emma Hopkins Residential Sales Consultant
M 027 566 3778 E emmah@pb.co.nz f PBAshhurst

Property Brokers Ltd Licensed REAA 2008

Property Brokers^B

pb.co.nz

For all your automotive needs

**VILLAGE VALLEY
AUTOMOTIVE Ltd**



- WOF
- TYRES
- REPAIRS
- BATTERIES
- SERVICING
- TRAILER HIRE
- SPIT ROAST HIRE
- AIR CON SERVICING
- WHEEL ALIGNMENTS

Ph 06 326 8239
www.vva.co.nz

@ office@vva.co.nz 54 Cambridge Ave, Ashhurst

your local ashhurst electrician

Knowles Electrical

Electrical • Michael Knowles
Home Ventilation • registered electrician
Security • M 022 024 8156
Heat Pumps • E michael@knowleselectrical.co.nz
W www.knowleselectrical.co.nz

no travel or service charges within the village mon-fri

Manawatu Gorge Annual Predator Trapping Report *continued*

that this is an isolated case. As usual, rats were the predominant predators with 121 recovered from the traps, which is below average. The expansion of DOC's network of poison bait stations in the Gorge Reserve area may partly explain the recent decline in rat numbers. We also recovered 22 hedgehogs and six mice.

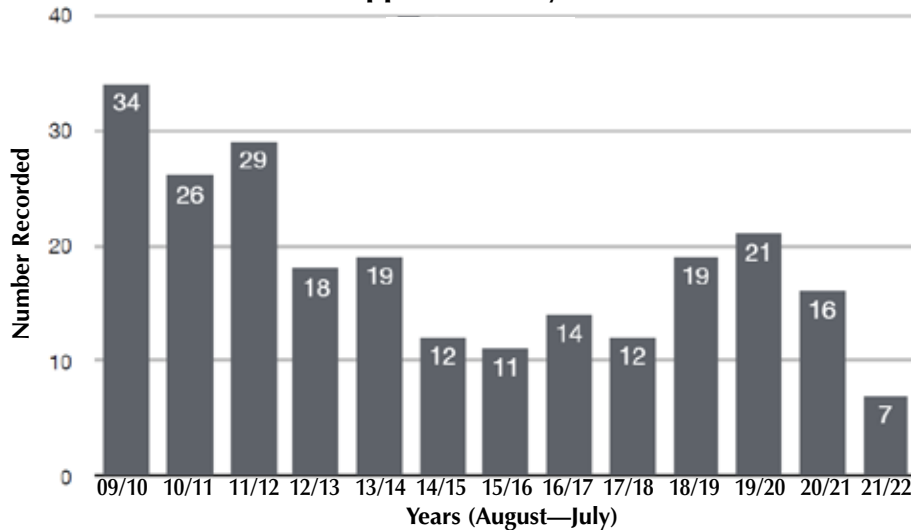
I continue to be amazed by the number of young nikau palms that are starting to dominate the undergrowth along many parts of the track, including the popular Tawa Loop Track. Several decades ago nikaus were far less abundant and young

nikau trees were relatively rare, probably because of former cattle grazing in the reserve. In a few year's time I predict that the Gorge Reserve will be renowned for its large patches of nikau-dominated forest that provide a stunningly tropical appearance.

Thanks to DOC for their support, and to our loyal volunteers who brave the vagaries of the weather, clamber up steep slippery banks to rebait the more precariously located traps, and willingly retrieve the often maggoty corpses from the traps.

Mike Shepherd

Stoats trapped annually 2009—2022



The Permaculture Garden Tour

After the success of the 2020 Permaculture Garden Tour, we have another day of inspiration, education and discovery booked in for 2022 on Saturday, October 29th, 10.00am—4.00pm. The cost is \$25 per person, with free entry for those under 12. This is a fundraiser for RECAP so we can continue our projects and services and run educational workshops and seminars. Registrations are open now at recap.org.nz.

This is an open day for people to learn more about some of our long term RECAP projects (The Ashhurst Community Garden, Olsson Orchard and McCrae's Bush) and visit a range of private permaculture based properties based on the core principles of Earth Care, People Care and Fair Share. You'll see young gardens at the beginning of their creation through to well established areas of various sizes with experienced caretakers.

Enjoy a self guided tour around locations in Ashhurst and the Pohangina valley, while gaining knowledge and insight into permaculture principles.

Some examples of what you can expect from the tour (with many more to be announced) include:

Slow Farm: built and maintained by knowledgeable permaculture practitioners. This is an expansive, well established series of gardens with a variety of animals and many examples of permaculture methods and applications. This impressive property aims to provide sustenance for family and the community, while also increasing the land's ability to hold vital carbon, water, and a greater diversity of living things.

Also, an abundant 30 year old 1/5 acre section with a combination of fifteen fruit and nut trees, a vegetable garden, flowers, native areas, composting, harvested rainwater and targeted irrigation systems.

The Olsson Community Orchard: Conceived in 2012, the orchard is named in honour of Noel Olsson (1941-2012) the Chair of Ashhurst Action Group, the 'parent' organisation for RECAP. Forty varieties of fruit and nut trees now reside in the orchard, as well as examples of guilds, composting, pruning and good orchard practice. Not only does this orchard provide food for its community, it also functions as a teaching space with two pruning workshops held here each year.

During the tour we have scheduled some short, practical workshops for participants

Anglican Parish of Pohangina

St Mary Magdalene's Church, Ashhurst

8.00am: 1st Sunday of the month

10.00am: Every Sunday

St Bartholomew's Church, Komako

10.00am: 2nd & 4th Sunday of the month

Officiating Priests — Rev Michael Russell, Rev Pam Barnett

Contact the Parish office for further information on phone 326 8543 or email: info@parishofpohangina.net
www.parishofpohangina.net

Our services at present are held based on the COVID-19 alert levels. Please keep an eye on our notice board and/or website for current updates.

St Mary Magdalene Church—Office Hours
(subject to change at short notice):

Monday: closed

Tuesday: 2.00pm—5.00pm

Wednesday: 2.00pm—4.30pm

Thursday: 2.00pm—5.00pm

Friday: 2.00pm—5.00pm



Little Kiwis Playgroup

Little Kiwis Playgroup is currently on hold.



Ashhurst Music Club

Live original music in your back yard
Our club is open to all ages and skill levels. Monthly meetings are about to start so keep watch on the Facebook page and in the Village Voice.

Open mic at Munch Cafe—62 Broadway Avenue. 14th—28th July and beyond.

Contact kiwifieldcrew@inspire.net.nz or phone Grant 027 432 7648



A.P.V. PLUMBING LTD

Kenny Allison

Registered Craftsman

Plumber/Gasfitter

- Free Quotes & Consultation
- Solar Installations
- Roofing
- Central Heating Installations
- All Work Guaranteed
- Competitive Rates

22 Mulgrave Street
Ashhurst

M: 027 241 3457

A/H: 326 9346

E: apvplumbing@xtra.co.nz

!!! NO JOB TOO BIG OR TOO SMALL !!!



B4 School Check

The B4 School Check is the final Well Child check. Free for all four year old children.

It includes a distance vision screening test, audiometry hearing test, height, weight, dental health and child development.

Contact 0800 692 445



Strength and Balance Ashhurst

Move it—or Lose it! Join our friendly group for a gentle, low impact exercise class, (no floor exercises) with an emphasis on fun. Optional—go for coffee afterwards.

Where: Village Valley Centre

When: Monday mornings, 9.45am—10.45am

Cost: \$8 per class.

Enquiries: Maria, phone 329 4166



Ashhurst Budgeting Service

Thursday 9.30 am — 1.00 pm

Operating from St Mary Magdalene Anglican Church, 67 Cambridge Street, Ashhurst.

For Appointments Contact: Manawatu Home Budgeting Service.

Phone: 358 2279; Cell: 0800-228 343



Ashhurst Genealogy

If you require assistance with Ashhurst History or Genealogy research Phone Heather Smith on 326 9989 or email whizjoy@inspire.net.nz



Ashhurst Yoga Classes

Gentle beginner to intermediate yoga classes are on every Wednesday during school term time, 9.15am—10.00am at the Village Valley Centre.

Cost is \$8.50 and bring your yoga mat.

Working to your own level we focus on mindfulness, building and maintaining strength and flexibility—you don't need to have either to start yoga!

Introducing a new class on the first Wednesday of every month—Chair Yoga, suitable for all levels, especially those with limited lower body mobility or balance, a perfect opportunity to start yoga!

Phone or Text Vanessa: 027 243 0187 or email vlbphotography@inspire.net.nz, or visit www.vlbphotography.co.nz.



The Permaculture Garden Tour *continued*

to take away some extra learning covering hypertufa construction, biochar demonstration, effective composting and more to be confirmed. These will be throughout the day ensuring those who wish to attend them all will have time to do so. There will be a variety of plants and local goods available to purchase at a small market, and we encourage you to visit our local businesses for sustenance as it will be a full and busy day!

Some feedback from the 2020 Permaculture Garden Tour:

'It was great to see so many different ideas. Garden owners were all lovely to talk to and shared their philosophies. Good to see a range of gardens from almost beginner/basic to well established.'

'I thought it was a really fabulous day and well organised. We loved that we could walk to the majority of the ones in the village and I love looking



at what other people are doing in their gardens, how they have set things up, what plants they are growing. Was a very enjoyable day.'

'It was great to come across from Palmerston North for the day. I rarely spend much time in Ashhurst and it was lovely to get to know the area better and see the beautiful, well established gardens around the area. They were all beautiful and unique and I loved seeing every one.'

Please keep an eye on our website and social media for updates as they are confirmed, or contact info@recap.org.nz to request to be added to our mailing list.

Chris Love—RECAP Coordinator

Damsel Bugs

Mention the name Damsel Bug and most people will wonder what you are talking about. Damsel Bugs are small, winged, predatory insects that, in common with other insects such as ladybirds and lacewings, are generally regarded as desirable. This is because they feed on a wide range of smaller soft-bodied insects that are plant and crop pests, including aphids, leafhoppers, plant bugs, thrips and small caterpillars. Many Damsel Bugs catch and hold prey with their forelegs, in a similar way to praying mantises.

At around 10mm or less in length, however, it is not surprising that they are not often noticed. They are typically tan or yellow-brown in colour and have an elongated body that tapers toward the front end. The head is narrow, with bulging eyes

and long antennae. Perhaps their most significant feature is their beak (rostrum), a piercing, needle-like protuberance from the mouth. Whereas plant damaging bugs use their beak-like mouth-parts to pierce plants and suck out sap, Damsel Bugs use theirs to pierce their prey.

Damsel Bugs belong to a family of insects called **Nabidae** which, worldwide, number more than 500 species. Most Damsel Bugs belong to the genus *Nabis* of which there are three main species present in New Zealand. I have found and photographed about a dozen Damsel Bugs in total, some of them in and around Ashhurst. The species I have found most often is called *Nabis maoricus*. This species is endemic to New Zealand which means it is not found anywhere else.

I have, on two occasions, found a species called *Nabis biformis* in the Taupo region

Riverside Orchards

**For Your Fresh Fruit and Vegetables,
Fresh Baked Bread,
Cheese, Milk, Family Pies**

Daily delivery into Ashhurst and Palmerston North
Order online now at www.riverside.co.nz

1346 Napier Road (opp Petrol Station) Ashhurst
P: 06 326 8800 F: 06 326 8750. E: sales@riversideshop.co.nz

O'LEARY TREE SERVICES LTD

Craig O'Leary

Dip. Hort/Arb. Certs, Trade Cert. Hort.
30 Years Experience

**Tree Removal & Trimming
Pruning, Hedge Trimming**

P. 06 326 9688 M. 027 672 7747

Damsel Bugs *continued*

but I have not seen this species locally. Nationally, this appears to be the most common species of Damsel Bug.

Nor have I found another species called *Nabis kinbergii* which also seems to be



quite common nationally. Several times I have found a Damsel Bug nymph (the growth stage before an adult), but it is very difficult to identify what species it is from a nymph.

Grey Smith



Photos: Left—*Nabis maoricus*; Right—*Nabis species*(nymph)

August in the Edible Garden

August is still winter, yet in New Zealand it is probably the most important month in the gardening year. It is the time for preparing the garden for the busy spring and summer seasons. Work done now pays off later in the growing season.

Winter is the time for planting fruit trees, and cost-wise they are a great investment as they can bear for decades. The flavour of a freshly picked, sun-ripened peach or old-fashioned apple beats anything you can buy in stores. Then there are the fruits that you can't buy in the stores—like figs.

Planting berries is also a good option. They sell for a premium in stores, so having your own in the backyard is always a bonus. Many are suitable for pots.

Strawberries are also ready to go in the garden—if you haven't already planted them. I have seen some local gardeners have offered excess strawberries on the berms.

You will also see potatoes have arrived in stores. Now is the time for chitting them (sprouting) for planting out after frosts have gone.

You can still sow brassicas, beetroot, peas and other winter hardy vegetables that can handle frosty nights.

For me, the fun part is looking through catalogues to pick which tomatoes, beans and other summer vegetables to sow. You can get a head start by sowing them under cover now, so they are a good size come November once the threat of frost has passed. Traditionally, there are two frosts in October and one in November, but the way

Ashhurst Plunket

Every Monday and Tuesday. Providing family health and wellbeing; child growth and development checks. For more information call Plunket Area Office—0800 692 445 or 06 357 4844

Ashhurst Foodbank

Open 2.00pm — 3.00pm every Thursday. Methodist Church, Bamfield Street, Ashhurst. Contact: Zosha 027 446 7769 or Marianne 027 627 2054

River Church

Meet at 131 Cambridge Avenue each Sunday at 10.00am. All welcome. Pastors Dave and Kellie Ross. Phone 027 247 2179 or 328 4864 (evening) www.riverchurch.nz

Steady As You Go

Steady As You Go exercises at 131 Cambridge Street Ashhurst.

If you are 65+ years and would like to take part in light exercises, call in on Thursdays 10.00am—11.00am.

Contact Age Concern phone 355 2832

Ashhurst Indoor Bowling Club

Weekly Club bowling starts Thursday, 18th March—30th September. We meet in the Village Valley Centre and games start 7.30pm.

Welcome to new and existing members. Come along and find out how challenging this game can be!

**Manawatu
Contracting
& Drainage Ltd**

Ashhurst's LANDSCAPE SUPPLY YARD

- ✓ Compost
- ✓ Bark Nuggets
- ✓ Basecourse
- ✓ Builders Mix
- ✓ Nova Coil
- ✓ Weedmat
- ✓ Concrete/Mortar/Cement Bags 20kg
- ✓ Mulch/Black Mulch
- ✓ Top Soil
- ✓ Washed Stone
- ✓ Sand 3 & 4mm
- ✓ Pea Straw
- ✓ Slimline Water Tanks

Contact: Greg or Luke
027 557 8809

Hours: Mon-Fri 7.30am-5.00pm
Sat 9.00am-3.00pm; Sun 9.30am-2.00pm

145 Mulgrave Street, Ashhurst
just along from the PNCC Recycling Centre

HOME DELIVERIES AND BULK DELIVERIES AVAILABLE

LJ Hooker

**Marketing and Selling
Residential and Lifestyle
Property in the Manawatu**

*If you have a property you are thinking
of selling call me for a no obligation
Free Market Appraisal.*



Peter Colville

021 474 557

peter.colville@ljhookerpn.co.nz

Matwork Pilates Sessions

Tuesdays at 6.00pm—55 minutes.
Centennial Room at the Village Valley
Centre. Free first session.

Bring a mat or \$12 mats available.

*"In 10 sessions you will feel the difference,
in 20 you will see the difference, and in 30
you will have a new body."* Joseph Pilates
To register contact Narrelle 021 2673676



Ashhurst and District Senior Citizens Association Inc

Meet on the first Thursday of each month in
the Methodist Church Hall, Bamfield Street,
at 2.00pm. We invite you to come along
and enjoy an afternoon of friendship and
entertainment.

Contact: Terry Carr, 326 8074



Ashhurst Clay Target Club

(claybird shooting)

Meets the last Sunday of every month from
9.30 am at 651 Valley Road
Anyone welcome to join us
Queries: Ken Simonsen, Phone: 329-4800



Ashhurst Red Cross

Secondhand Shop, Cambridge Avenue.
If you're feeling the winter chill, come on
in, we have lots of warm winter clothing in
store

.Monday—Thursday 12.30am—2.30pm

Friday 10.00am—1.00pm

or when the flags are out.



Local Justices of the Peace

Mrs AK Rutherford

Available by appointment—027 404 8551

Mr F Saa

Pohangina Road RD 14—029 254 3206

Mr JC Culling

Pohangina Road—3294825

August in the Edible Garden *cont*

the weather has been in the last few years, it
is not a hard and fast rule.

For those with limited room, there are
dwarf options that can be grown in pots.

Remember to plan to grow some flowers as
well. Choose varieties that will attract bees
and other beneficial insects to pollinate your
edible crops and as pest control.

Llyvonne Barber

Waka Kotahi New Zealand Transport Agency Update

The Te Ahu a Turanga: Manawatu Tararua
Highway team places huge importance on
keeping the communities surrounding our
project engaged and informed about our
progress.

We embrace Te Ahu a Turanga's status as
a legacy project, which, upon completion,
will play a vital role in connecting
communities throughout the lower and
central North Island, including the Tararua
District, Palmerston North City and
Manawatu District. We understand that
due to the nature of project, the public is
very interested in our activity.

One of the things we do to ensure we're
meeting your information needs is to hold
public information sessions across the
rohe. We held three of these two-hour
sessions in June at Dannevirke, Ashhurst
and Woodville respectively. These offered
members of the public the chance to talk
to team members about the project and to
learn about developments across the site.

The feedback from those who attended
across the week was constructive,
positive, and reflective of the high levels
of interest the communities have in what
we're doing. We would like to thank all

of those who attended for taking time out
of their evenings to listen to our updates
and to pass on questions, concerns and
feedback.

During these sessions, we also set up
a mobile "Ride the Highway" simulator,
to allow people to drive on a digitally-
rendered version of the completed highway.
This proved really popular across the week
but for those of you unable to make it to a
session, we do have simulators set up in
the Woodville and Ashhurst community
libraries, and at our project site office on
1600 Napier Road. We also have a range of
other information on offer at these venues,
including display posters and handouts.
The visitor centre at the project office is
open from 10.00am—4.00pm, Monday to
Friday.

We'll be looking to hold another round
of public information sessions later in the
year during the summer season. We'll
look to publicise these across our various
platforms but if you do want to get regular
updates on the project, please feel free to
sign up to our newsletter, which can be
found on the project website: [https://www.
nzta.govt.nz/projects/te-ahu-a-turanga/](https://www.nzta.govt.nz/projects/te-ahu-a-turanga/)



Always Looking After the Locals
Village Four Square and Lotto

All You Need!

- ◆ Groceries
- ◆ Fresh Produce /Meat
- ◆ Magazines,
- ◆ DVDs,
- ◆ Beer/Wine,
- ◆ LPG Gas Swap/New Bottles
- ◆ Lotto

Ashhurst Medicine Depot

Hours

Monday—Friday: 7.00am—8.00pm

Saturday: 7.30am—8.00pm

Sunday: 8.00am—8.00pm

Public Holidays: 8.00am—8.00pm

Pravin & Padmini Patel welcome you at

141 Cambridge Avenue, Ashhurst Phone: 326 8014

THE

herb farm

CAFE

We Love Our Locals:

SO HERE'S AN OFFER FOR YOU:
Receive a free hot beverage when
you order a menu item before 12pm
on a Wednesday. Mention this ad to
claim your free hot beverage.

CAFE - GARDENS - SHOP - WORKSHOPS & EVENTS - FUNCTIONS

OPEN EVERYDAY 10AM - 4.30PM • 86 GROVE ROAD, ASHHURST • PH 06-326 8633

Waka Kotahi New Zealand Transport Agency Update *continued*

Parts of the site are visible from the Ashhurst and Woodville ends but we also display our latest flyover footage at public sessions to give people a bird's eye view of the construction progress in the areas that aren't visible. We've moved about 3.3M cubic metres of earth to date, as well as making considerable progress across the six structures (with two now structurally complete) and on our planting targets.

These flights are flown more frequently over the summer, when there is better weather and more progress on site, however we still get a few flights done in the winter. The most recent flight took

place in July and this will be available on the project website in coming days. We've recently filmed some interesting videos on our planting and landscaping progress to date, and on our partnership in the training and development space with UCOL. These videos will also be posted to the website and to the Waka Kotahi Central Region Facebook page. We really do value your feedback, so if you have any questions about the project or want to get in touch with the team, please feel free to send inquiries to teahuaturanga@nzta.govt.nz or call 0800 740 560.

Grant Kauri

Most Popular Titles for July

We are always getting asked what our most popular titles are currently. We can let you know that the thriller 'Where The Crawdads Sing' by Delia Owens and the youth graphic novel series 'Heartstoppers' by Alice Oseman are heavily requested right now. One thing that has been very noticeable since our first lockdown is the huge popularity surge in jigsaw puzzles. Great for relaxing and great for the brain.

Manawatu Home Budgeting Service

We are thrilled to be in partnership with MHBS who are conducting budget sessions in our library on Thursday. If you would like to talk to their wonderful staff or need some excellent budgetary advice and guidance, please let us know.

Rescued Food Distribution—Winter Hours

Just a reminder about our Winter hours for our food distribution afternoon—every Wednesday afternoon from 3.15pm—4.15pm. The work that goes into this from Chris of RECAP and all the volunteers is huge and we are so appreciative of their efforts.

Ashhurst Library Facebook

Just a reminder that if you want to keep up to date with all our latest news, events or announcements, just visit us at <https://www.facebook.com/AshhurstLibrary> and click 'Like'.

Ross Meads—Ashhurst Librarian

Ashhurst Library

Hi everyone, can we say a big thank you to everyone for their support and attendance at our holiday programme events. It was our first programme for a year, and it was great to be back.

Ashhurst Mighty Kids

Ashhurst Mighty Kids is our new name for our preschool programme of stories, songs and crafts. It was formerly Jumping Jellybeans. Keep an eye out on our Facebook page for the programme. We have some special guests lined up.

Thursday, 11th August—10.30am

Thursday, 25th August—10.30am

Celebration Morning Teas

We have many wonderful people in our community and every now and then, we would like to celebrate them with friends and family. We will have some special morning teas over the next few months and we will post details online and in the Village Voice.

Waka Kotahi NZTA Driving Simulator

We'd like to say a big thank you to our great friends of Waka Kotahi New Zealand Transport Agency who installed the driving simulator in our library letting people do a simulation of driving through what will be the new gorge road. It has been immensely popular although it has highlighted some worryingly terrible driving skills and complete lack of a sense of direction.

Ashhurst Pohangina Squash Club

Club night is Monday, from 6.00pm. Come along and give squash a go!

All members and newcomers welcome. Courts are located at the rear of the Village Valley Centre on Guildford Street

Contact Braydon on 027 390 5611, ashpohsquashclub@inspire.net.nz, or find us on Facebook.



Ashhurst Pohangina Lions

The Ashhurst Pohangina Lions meet every second Thursday of the month at the R.S.A. Clubrooms at 6.30pm.

This established and friendly Lions Club is community oriented.

Contacts:

Jack Zwart (President) 326 8958

standishzwart@gmail.com

Dennis Moore (Secretary) 357 5651

dmoore@inspire.net.nz

Mike Forlong (Memberships) 329 4741

forlong@inspire.net.nz

Alyn Edwards (Media) 329 4833

diawlbach@inspire.net.nz



Reiki Group Meeting

Welcome to all Reiki Practitioners, of any level, from any lineage!

Meetings will be at 7.00pm on the first Sunday of every Month at the Ashhurst Library. (June being the exception, when it will be the second Sunday due to Queen's Birthday Weekend)

Contact: Tricia Kirkwood

Phone: 326 7279 or 022 184 1968

Email: 2activatehealth@gmail.com



Kids 'n Motion

Kids 'n Motion is now in its 20th year of providing music and movement for 0-5-year olds within Ashhurst and the surrounding community.

When: Every Friday 9.45am—11.15am during school terms.

Where: Village and Valley Centre, Guildford Street, Ashhurst.

Cost: Gold coin donation.

Contact: Cherie O'Leary, Ph: 326 9688

Check out our Facebook page and like us!

Kids 'n Motion is such a great group to come along too—see you there!



Come and see the team at Kauri Physio for all your ACC and non ACC injuries

If you are unsure please email and we will advise whether physio is the right choice for you.

**KAURI
PHYSIO**

619 Featherston Street,
Palmerston North
Phone: 06 357 4424

Tamsin.mafi@kaurihealthcare.nz

GRAEME BILSLAND PAINTERS LTD

M: 027 581 2510 E: graeme@bilslandpainters.co.nz

PO Box 20017, Palmerston North 4448



Pohangina Rubbish Collection

Rubbish is collected every Monday.
Bags out by 7.30am.

Taekwondo

Taekwondo / Self defence class for all levels and abilities, men and women, boys and girls. Tuesday and Wednesday nights from 5.20pm—7.00pm during term time at the Lincoln Park Ashhurst Pohangina Rugby Football Clubroom in Ashhurst. Come and see what it's all about.

Check out our Facebook page—<https://www.facebook.com/ashhurstkd/>



Pohangina Yoga Classes

Mondays 6.00pm—7.00pm

\$10 per class or \$50 for six classes

Suitable for beginners and those with more experience of yoga.

Contact Catherine: hauorayoga@gmail.com or 021 0270 4400, www.hauorayoga.co.nz

Facebook: Hauora Yoga



Ashhurst Playcentre

Licensed Early Childhood Education Provider. Over 50 years in your community. Spaces now available for children 0—6 years. Call 326 9270 or email ashhurst@playcentre.org.nz or Drop in for a free visit and a cuppa.

Tuesday and Thursday 9.00am—1.00pm.
118 Stanford Street, Ashhurst



Pohangina Local Christian Radio

3ABN Radio is now broadcasting in Pohangina Township on 107.7FM. Offering lifestyle radio with a difference! Broadcast 24 Hours 7 Days a week for the 'Best News Ever!' www.3abn.org Contact Rex 06 356 1141 for Free Bible Studies, Books and DVD's



**HOMESTEAD
CATTERY**

*Skilled and caring local staff
with over 14 years experience*

31 Pohangina Road, Ashhurst
Viewing by appointment welcome

Ph: (06) 326 8064

www.homesteadcats.co.nz

Find us on [fb.com/homesteadcats](https://www.facebook.com/homesteadcats)



Ashhurst Clay Target Club

Our June shoot had five squads of shooters, and again we had some newbies who signed up to join the club. It's really heartening to see in a small club like ours that we continue to register new members.

We even accommodated and welcomed some guest shooters who just shot one round of 25 before heading off to Auckland. Thanks to four of our club members who supervised them,



Photos—Left: Visitors for the day

providing some coaching.

Results were:

Top Gun: Craig Hocken

Top Handicap: Paul Wheeler
(new member)

Club Shoot—30 Triples

10 DTL, 10 single barrel and 10 points score.

Top Gun: Alex Hall

Karen Pawson—Secretary



Right: Winners of the day.

Ashhurst Indoor Bowls Club

The club has now moved club nights back to the Village Valley Centre. A big thank you to the Ashhurst School for allowing us to use the school hall while the Centre roof was repaired.

Members have been busy over the past month with several big events being held in the Manawatu and further afield.

The zone finals of the Mixed Fours were played in Napier with our local winners Tim Veale, Bruce and Sarah Meyer and Anne Marie Redmond again taking the honours and now going on to the National finals to be held in Wellington, in September.

Our Henselite Singles Champion Tim Veale also played the zone final in Napier with another great result to progress to the National final in Wellington. Tim is going to have a very busy weekend!

Tim, Bruce and Phil Clinch were selected in the Manawatu Paterson Trophy team, to compete in New Plymouth against North Taranaki, Taranaki, Wellington and

King Country. Unfortunately Bruce had to withdraw due to illness. The winner was North Taranaki with Taranaki runner up and Manawatu third.

Three Ashhurst members, Gloria Hall, Marion Mckenzie and Jennie Veale, were selected in the Manawatu Ladies rep team to play North Wellington which resulted in a good win to Manawatu.

Gloria won the Club Singles by defeating Tim in the semi-final and then just holding on and pipping her brother Kelvin Hills 14—13 in the final. She then played in the Champion of Champion Singles with no luck but did draw against the eventual winner, Erryl Bocock.

We have the Pairs Championship coming up shortly.

The club enjoyed a fun visit to the Takaro Star Club on Monday, 18th July, where we played the St Kilda format, with players swapping teams throughout the evening. A good way to mix the two clubs.

Margaret Grant—Publicity

24 hours a day

Whether you are lonely, unhappy,
ready to end it all

WE ARE HERE TO LISTEN TO YOU

358 2442 or 0800 72 66 66 | www.samaritans.org.nz

GLIMPSE

We're leading up to elections

Local Government elections are just around the corner.

Candidates who wish to lead Palmy through the next three years can officially put their hat in the ring by 12pm on Friday 12 August.

For Palmerston North City Council, two councillors will represent Te Pūao Māori ward, 13 councillors will represent Te Hirawanui General ward and the mayor will be elected at large.

While Te Pūao Māori ward is an exciting way of ensuring Māori representation at Council, there is still potential for more diverse representation around the table. Palmy is home to more than 150 different ethnic groups and more than 120 different languages are spoken. Diverse life experiences, backgrounds and beliefs contribute to great decisions for our city. If you're interested or know someone who'd make a great representative for our community, give them a nudge to stand for Council.



Pre-election report

Major government reforms, costly seismic upgrades, and keeping up with growth are some of the biggest challenges to consider in this year's upcoming local elections.

Palmerston North City Council's pre-election report takes a closer look at the city and what's in store for the future. It also outlines Council's financial position and how projects, services and facilities are funded. It's about encouraging public discussion and informed debate during the election period. The information will help candidates understand the city's current issues, and help voters make informed decisions on who'd best represent them.

Meet the candidates

Once we know who our Council candidates are, we want you to be able to talk with them and share what matters to you.

We're encouraging community groups to consider holding events where you can connect with them.

The Palmerston North City Council website has elections information including how to plan a candidate meeting, as well as advice around hosting, the invitation, getting the word out and what to do on the day.

For your meeting, decide on what you want to achieve and think about details such as timings, venue and format. Be creative with your format – it doesn't have to be a traditional debate.

Haven't enrolled to vote yet?

There's loads of information on the Electoral Commission's website vote.nz. It's also where you can go to enrol online, so you will be sent a voting pack and ensure your view is counted. If you're not digital savvy, no worries – phone **0800 36 76 56** to have an enrolment form sent to you.

➤ Nomination papers can be picked up from the Customer Service Centre, Palmerston North City Council, 32 The Square, or downloaded from our website. Alternatively, phone the electoral office on **0800 922 822** and papers will be sent out to you.

➤ Palmy election info:
pncc.govt.nz/Elections



ASHHURST COMMUNITY LIBRARY

06 326 8646

Open days

Monday	2pm - 5pm
Tuesday - Friday	10am - 5pm
Saturday	10am - 1pm
Sunday	closed

Access the full range of library digital resources at: citylibrary.pncc.govt.nz

SPLASHHURST COMMUNITY POOL

06 350 0849

Normal hours

Tuesday - Friday	6am - 9.30am + 1pm - 7pm during school term. 6am - 7pm during school holidays
Saturday	8am - 6pm
Sunday - Monday	closed

Contact tracing at the pool and online:
clmnz.co.nz/splashhurst

ASHHURST RUBBISH + RECYCLING

Rubbish bag collection Tuesday morning. Bags out by 7.30am.

(Glass collection suspended until further notice – check pncc.govt.nz)

Recycling Bin	Glass Crate
2 August	9 August
16 August	23 August
30 August	6 September

MULGRAVE ST TRANSFER STATION

Recycling, green waste and general rubbish disposal.

Open Days

Tuesday	1pm - 3pm
Saturday	10am - 4pm



info@pncc.govt.nz / 06 356 8199 / pncc.govt.nz

Contacts

Editor: Llyvonne Barber

Phone: 326 8066

ashhurst.voice@gmail.com

PO Box 38, Ashhurst

Advertising: Grey Smith

Phone: 326 8075

rgcasmith@inspire.net.nz

Proof-reader: Kaye Farrugia

Letters to the Editor

Letters under 200 words are preferred. The writer's contact details are required on all letters (not for publication), including address, email and phone number. We may need to contact you to clarify minor details.

The editor reserves the right to edit, abridge or decline letters or articles without explanation. Pen names or letters submitted elsewhere are not acceptable.

If supplying images, high resolution images are required. Please feel free to contact the editor if you are unable to email images.

Advertising Rates & Information

Articles and community notices are free. Adverts can vary from a few lines in the side column to a double business card size. Conditions apply. A 15% discount is offered if you pay in advance for a full year (11 issues). A business card size advert is to be 60mm by 100mm at 300dpi and costs \$50. The costs varies proportionally for smaller and larger sized adverts.

For further information on advertising costs and payments please contact Grey Smith. For technical details please contact the Editor. Contact details above.

Advertisers, we prefer that you supply files in pdf format. Please note that files supplied in .pdf format are unable to be adjusted from our end. Adverts can be created by the Editor for a small additional cost. These can be adjusted as required.

Village Voice Deadline

Deadline for articles and advertising submissions for the next edition is:

5.00pm Saturday, 20th August 2022.

We cannot guarantee your submission will be included after this date.

Ashhurst Bowling Club

So hard to believe it is over half way through the winter and the year!!

While the Bowling Season doesn't start until September there are some reminders to get members, and would be members, thinking about polishing off the bowls and sorting out uniforms etc.

But firstly, at the A.G.M. our long-time President, Lawrie Jones, resigned and said it was time for someone else to pick up the reins. Lawrie had been the President for nine years and was happy to not only fulfil 'Official Duties' but has also worked tirelessly behind the scenes at, and for, the club. He has always been highly respected and is absolutely well known throughout bowling circles. We wish Lawrie all the best, thank him unequivocally for his time as President and assure him that his knowledge and support at the club is still very much needed. Bowlers beware—he will have lots of time to practise.

Twilight will continue on a Wednesday, Club Day will be each Thursday, there are teams entered in the Mens Skogs and the Ladies Elizabeth Walker interclub competitions. We hope the school students will be back in Term 4 and we have a new liaison person for this—Jen Brown. The Match Committee have organised the

programme and are just finalising dates—this is a huge job as dates for other clubs' events and Centre events must all be fitted into the playing season. As usual there is going to be a very full and busy season at Ashhurst Bowling Club.

The contact person for all things relating to events etc is Max Grant—Match Committee Convenor.

Work on the green has been ongoing and yes, there have been some battles with the weather! Rain and wind have certainly been an issue but things have progressed all the same. There is a timetable of things to be done ready for Opening Day in September. The greenkeepers do a sterling job and also working bee times always attract many, many helpers.

The gardens look fantastic and lots of work has been done keeping things maintained in them and the surrounds.

Lee is our 'Clubhouse Fairy' and always has things looking sparkly. Currently, work is being done in the Ladies Toilets and this area is going to be 'wow', for Opening Day.

Next month will include more dates and information but, for now, keep happy and smiling and hopefully Covid and Flu free.

Adrienne Harding—Secretary.

Ashhurst Rainfall

146.5mm of rain fell in June, above the monthly average of 106.2mm.

Rain was recorded on 21 days with the highest one day rainfall of 24mm on the

12th June, 2022.

Total rainfall so far this year is 639.6mm. This is above the average for this period of 507.8mm.

Quang Mai

